

Implementing VMM integration with Operations Manager

Virtual Machine Manager can be integrated with Operations Manager. Integrating VMM and Operations Manager involves configuring both the Operations Manager server and the server running VMM.

EXAM TIP

Windows PowerShell 2.0 is required for System Center 2012, and Windows PowerShell 3.0 is required for System Center 2012 SP1 and System Center 2012 R2.

The first step in integration is to install the Operations Manager console on the VMM server. This is accomplished by using the Operations Manager Setup Wizard and selecting the Operations Manager console as the component to be installed.

MORE INFO INSTALLING THE OPERATIONS MANAGER CONSOLE See <http://technet.microsoft.com/en-us/library/hh298607.aspx> for information on installing the Operations Manager console.

The next step in integrating VMM and Operations Manager is to install the agent on the server running VMM and on any virtual machines under its control. Many times this step has already been done as part of the Operations Manager rollout. However, if the Operations Manager agent hasn't yet been installed, do so as part of the integration implementation.

The Operations Manager agent can be installed manually or through an automated means, such as the native Operations Manager discovery process. Once installed, you should verify that the VMM server and its virtual machines can be seen from within the Operations Manager console.

MORE INFO INSTALLING THE OPERATIONS MANAGER AGENT See <http://technet.microsoft.com/en-us/library/hh551142.aspx> for more information on methods to install the Operations Manager agent.

The next installation-related step is to import the appropriate management packs into Operations Manager. The necessary management packs include:

- Windows Server Internet Information Services 2003

- Windows Server 2008 Internet Information Services 7, including Windows Server 2008 Operating System (Discovery) and the Windows Server Operating System Library, which are prerequisites

- Windows Server Internet Information Services Library

- SQL Server Core Library

NOTE ABOUT THE PREREQUISITES These seemingly outdated prerequisites are still necessary even though the Operations Manager and VMM servers are running Windows Server 2012 with Internet Information Services 8.0.

Integration of VMM and Operations Manager is accomplished from the VMM server, specifically in the Settings workspace of the VMM console. Within the Settings workspace, selecting System Center Settings reveals the Operations Manager Server, as shown in Figure 1-14.

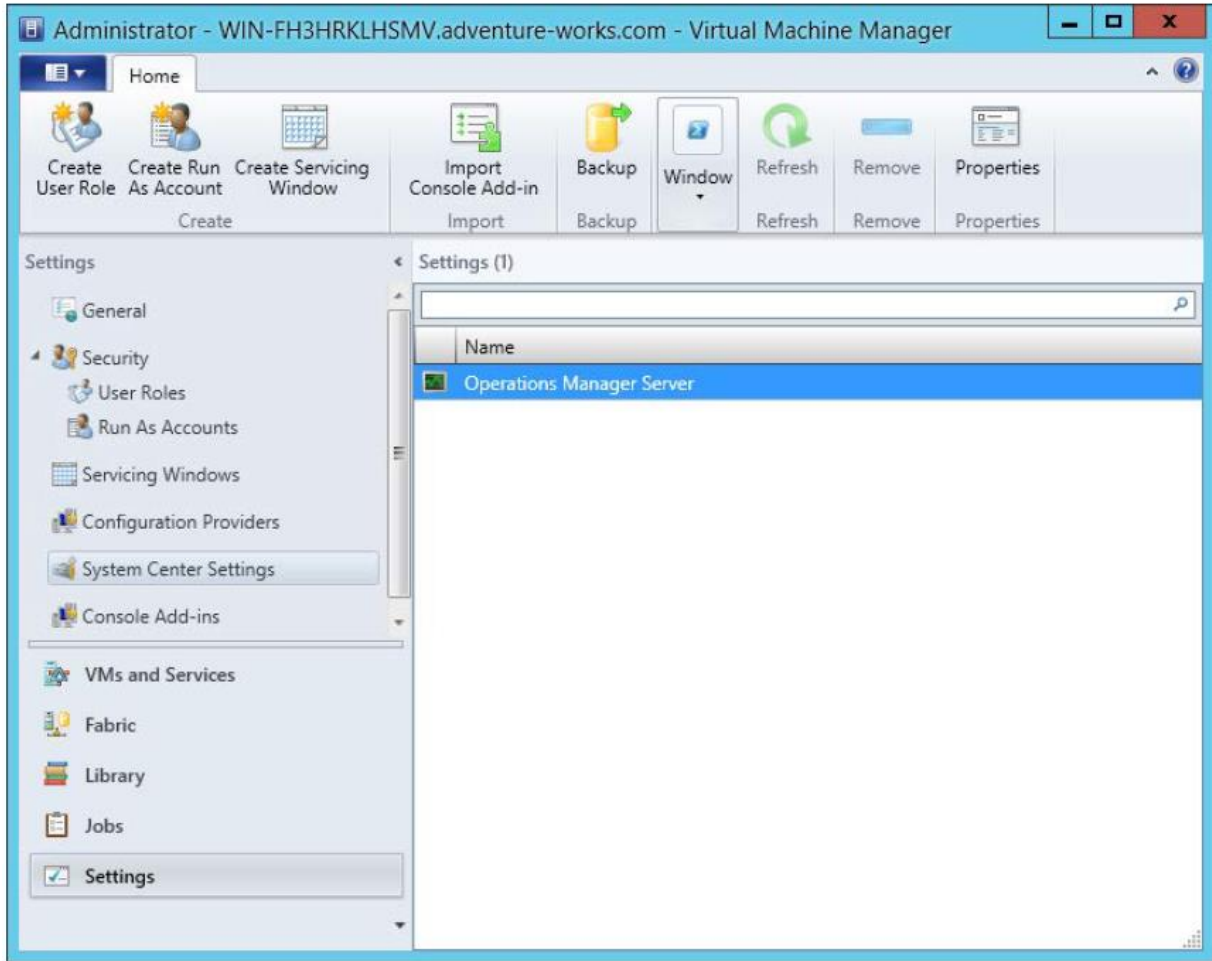


FIGURE 1-14 Viewing System Center settings

With Operations Manager Server selected, click Properties to start the Add Operations Manager Wizard, shown in Figure 1-15.

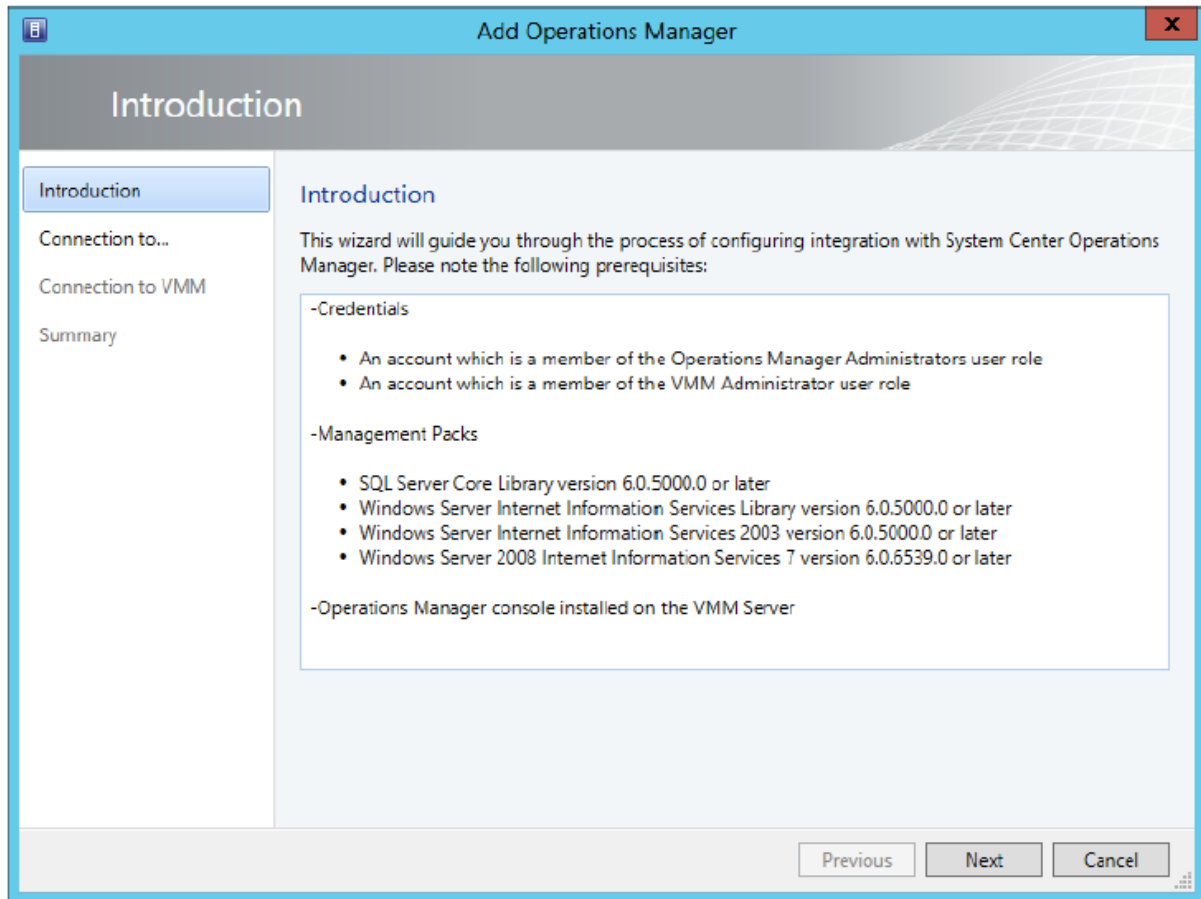


FIGURE 1-15 The Add Operations Manager Wizard

The Connection to Operations Manager page, shown in Figure 1-16, enables you to enter the server name and credentials, and to select the Enable Performance And Resource Optimization (PRO) and Enable Maintenance Mode Integration With Operations Manager options.

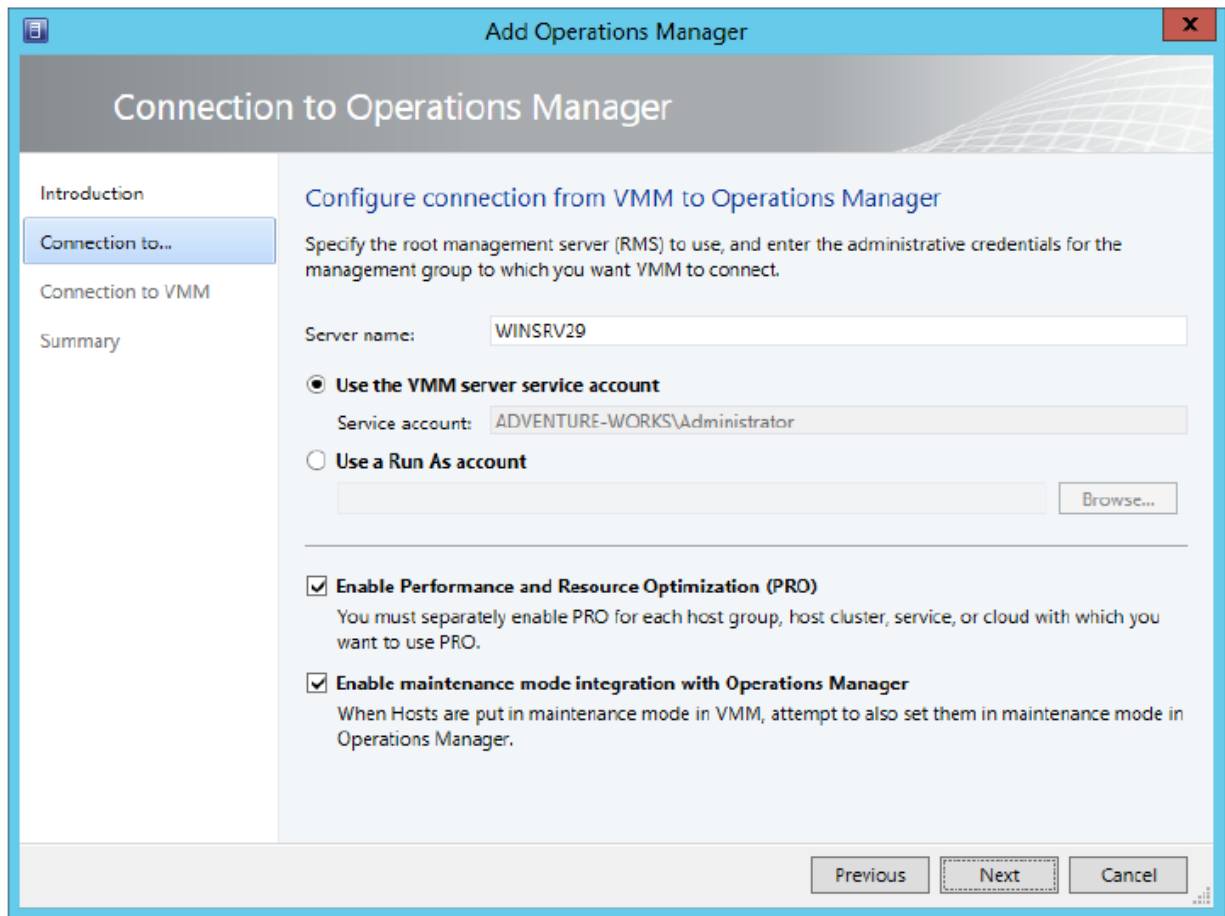


FIGURE 1-16 Adding details of the integration

The Connection to VMM page, shown in Figure 1-17, is where you specify credentials to be used by Operations Manager when connecting to VMM.

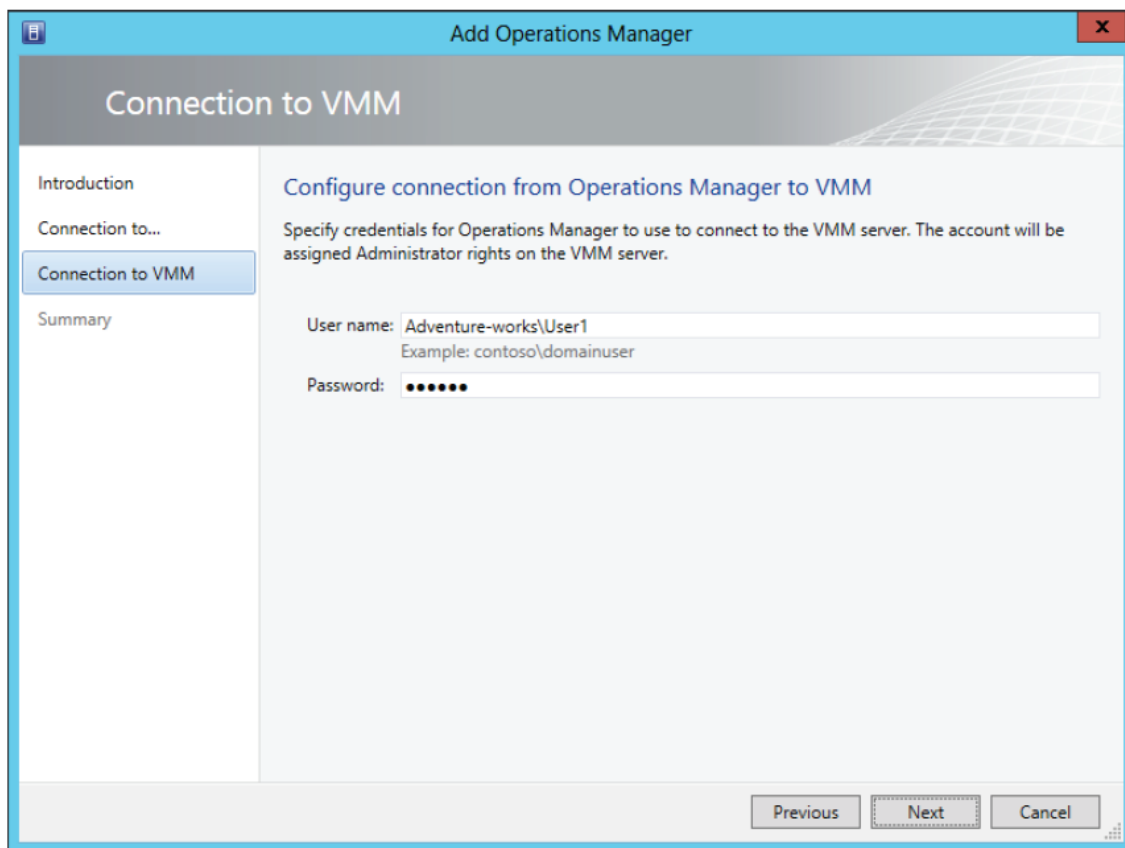


FIGURE 1-17 Specifying Operations Manager credentials

A summary page shows a summary of the configuration about to take place. When you click Finish, a job will begin the integration by installing the VMM management pack on the Operations Manager server.

Like other operations, integrating with Operations Manager can be accomplished through PowerShell. The New-SCOpsMgrConnection cmdlet can be used to add the connection.

MORE INFO THE NEW-SCOPSMGRCONNECTION CMDLET See <http://technet.microsoft.com/en-us/library/hh801397.aspx> for more information on the New-SCOpsMgrConnection cmdlet