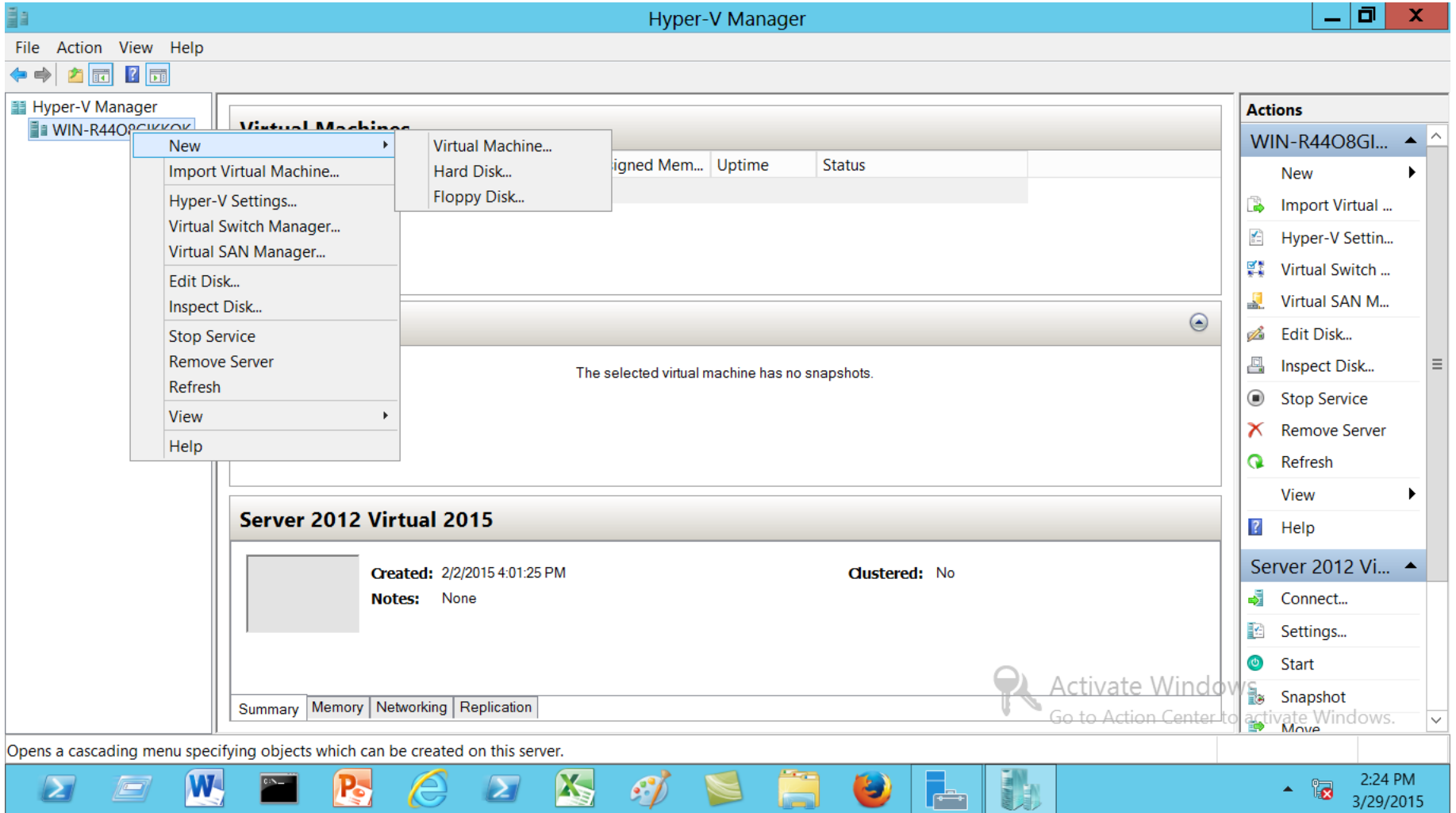


Creating a Virtual Machine

Hyper-V



Opens a cascading menu specifying objects which can be created on this server.



Specify Name and Location

Before You Begin

Specify Name and Location

Assign Memory

Configure Networking

Connect Virtual Hard Disk

Installation Options

Summary

Choose a name and location for this virtual machine.


The name is displayed in Hyper-V Manager. We recommend that you use a name that helps you easily identify this virtual machine, such as the name of the guest operating system or workload.

Name:

You can create a folder or use an existing folder to store the virtual machine. If you don't select a folder, the virtual machine is stored in the default folder configured for this server.

Store the virtual machine in a different location

Location:

 If you plan to take snapshots of this virtual machine, select a location that has enough free space. Snapshots include virtual machine data and may require a large amount of space.

< Previous

Next >

Finish

Cancel

Activate V
Go to Action



Assign Memory

Before You Begin

Specify Name and Location

Assign Memory

Configure Networking

Connect Virtual Hard Disk


Installation Options

Summary

Specify the amount of memory to allocate to this virtual machine. You can specify an amount from 8 MB through 6164 MB. To improve performance, specify more than the minimum amount recommended for the operating system.

Startup memory: MB

Use Dynamic Memory for this virtual machine.

 When you decide how much memory to assign to a virtual machine, consider how you intend to use the virtual machine and the operating system that it will run.

< Previous

Next >

Finish

Cancel



Configure Networking

Before You Begin

Specify Name and Location

Assign Memory

Configure Networking

Connect Virtual Hard Disk

Installation Options

Summary

Each new virtual machine includes a network adapter. You can configure the network adapter to use a virtual switch, or it can remain disconnected.

Connection:

New Virtual Switch



< Previous

Next >

Finish

Cancel

Go to Action



Connect Virtual Hard Disk

Before You Begin

Specify Name and Location

Assign Memory

Configure Networking

Connect Virtual Hard Disk

Installation Options

Summary

A virtual machine requires storage so that you can install an operating system. You can specify the storage now or configure it later by modifying the virtual machine's properties.

Create a virtual hard disk

Use this option to create a dynamically expanding virtual hard disk with the default format (VHDX).

Name:

Location:

Size: GB (Maximum: 64 TB)

Use an existing virtual hard disk

Use this option to attach an existing virtual hard disk, either VHD or VHDX format.

Location:

Attach a virtual hard disk later

Use this option to skip this step now and attach an existing virtual hard disk later.

< Previous

Next >

Finish

Cancel



Installation Options

Before You Begin

Specify Name and Location

Assign Memory

Configure Networking

Connect Virtual Hard Disk

Installation Options

Summary

You can install an operating system now if you have access to the setup media, or you can install it later.

- Install an operating system later
- Install an operating system from a boot CD/DVD-ROM

Media

Physical CD/DVD drive: D: ▾

Image file (.iso): E:\

- Install an operating system from a boot floppy disk

Media

Virtual floppy disk (.vfd):

- Install an operating system from a network-based installation server

< Previous

Next >

Finish

Cancel

Computer > New Volume (E:) Search New Volume (E:)

Organize New folder

Name	Date modified	Type	Size
sources	9/23/2014 6:16 PM	File folder	
storage files	4/21/2014 8:31 AM	File folder	
StorageReports	4/13/2013 12:29 A...	File folder	
Test share	10/20/2013 12:07 ...	File folder	
Tools for MCSA SERVER 2012	8/5/2013 10:14 AM	File folder	
Users	5/25/2014 2:54 PM	File folder	
videos	2/6/2014 9:26 PM	File folder	
Windows	11/23/2014 2:58 PM	File folder	
WindowsImageBackup	10/8/2014 3:15 PM	File folder	
Wireless LAN_Broadcom_6.30.59.20_W8x...	9/20/2014 7:52 PM	File folder	
Acer (C) - Shortcut (2)	9/23/2014 4:54 PM	Shortcut	1 KB
Acer (C) - Shortcut	8/26/2014 6:18 PM	Shortcut	1 KB
Computer - Shortcut	10/5/2014 4:22 PM	Shortcut	1 KB
New Volume (E) - Shortcut (2)	2/19/2015 5:22 PM	Shortcut	1 KB
New Volume (E) - Shortcut	10/21/2013 5:57 PM	Shortcut	1 KB
SW_DVD5_Win_Svr_Std_and_DataCtr_201...	2/11/2013 12:48 PM	Disc Image File	3,607,534 ...
VC_RED	11/7/2007 8:50 AM	Cabinet File	1,883 KB

File name: SW_DVD5_Win_Svr_Std_and_DataCtr_2012_64Bit_English_Core_MLF_X18-27588 ISO Image files

Open Cancel



Installation Options

Before You Begin

Specify Name and Location

Assign Memory

Configure Networking

Connect Virtual Hard Disk

Installation Options

Summary

You can install an operating system now if you have access to the setup media, or you can install it later.

- Install an operating system later
- Install an operating system from a boot CD/DVD-ROM

Media

Physical CD/DVD drive: D: ▾

Image file (.iso):

- Install an operating system from a boot floppy disk

Media

Virtual floppy disk (.vfd):

- Install an operating system from a network-based installation server

< Previous

Next >

Finish

Cancel



Completing the New Virtual Machine Wizard

Before You Begin

Specify Name and Location

Assign Memory

Configure Networking

Connect Virtual Hard Disk

Installation Options

Summary

You have successfully completed the New Virtual Machine Wizard. You are about to create the following virtual machine.

Description:

Name:	VM1
Memory:	512 MB
Network:	New Virtual Switch
Hard Disk:	E:\ProgramData\Microsoft\Windows\Hyper-V\VM1\Virtual Hard Disks\VM1.vhdx
Operating System:	Will be installed from E:\SW_DVD5_Win_Svr_Std_and_DataCtr_2012_64Bit_Eng



To create the virtual machine and close the wizard, click Finish.

< Previous

Next >

Finish

Cancel

Activate W
Go to Action C



Hyper-V Manager
WIN-R44O8GIKKQK

Virtual Machines

Name	State	CPU Usage	Assigned Mem...	Uptime	Status
Server 2012 Virtual 2...	Off				
VM1	Off				

Snapshots

The selected virtual machine has no snapshots.

VM1



Created: 3/29/2015 2:37:55 PM

Notes: None

Clustered: No



Hyper-V Manager
WIN-R44O8GIKKQK

Virtual Machines

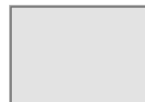
Name	State	CPU Usage	Assigned Mem...	Uptime	Status
Server 2012 Virtual 2...	Off				
VM1	Off				

- Connect...
- Settings...
- Start
- Snapshot
- Move...
- Export...
- Rename...
- Delete...
- Enable Replication...
- Help

Sna

The selected virtual machine has no snapshots.

VM1



Created: 3/29/2015 2:37:55 PM
Notes: None

Clustered: No

- Summary
- Memory
- Networking
- Replication

Actions

- WIN-R44O8GI...
 - New
 - Import Virtual ...
 - Hyper-V Settin...
 - Virtual Switch ...
 - Virtual SAN M...
 - Edit Disk...
 - Inspect Disk...
 - Stop Service
 - Remove Server
 - Refresh
 - View
 - Help
- VM1
 - Connect...
 - Settings...
 - Start
 - Snapshot
 - Move

Starts the selected virtual machine.



Virtual Machines

Name	State	CPU Usage	Assigned Mem...	Uptime	Status
Server 2012 Virtual 2...	Off				
VM1	Running	24 %	512 MB	00:00:10	

Snapshots

The selected virtual machine has no snapshots.

VM1

Created: 3/29/2015 2:37:55 PM

Notes: None

Clustered: No

Heartbeat: No Contact



Activate Windows

Virtual Machines

Name	State	CPU Usage	Assigned Mem...	Uptime	Status
Server 2012 Virtual 2...	Off				
VM1	Running	0 %	512 MB	00:03:13	

Snapshots

The selected virtual machine has no snapshots.

VM1



Created: 3/29/2015 2:37:55 PM

Notes: None

Clustered: No

Heartbeat: No Contact

Windows Setup



Windows Server 2012

Language to install: English (United States)

Time and currency format: English (United States)

Keyboard or input method: US

Enter your language and other preferences and click "Next" to continue.

© 2012 Microsoft Corporation. All rights reserved.

Next

Windows Setup



Windows Server 2012

[Install now](#)

[Repair your computer](#)

© 2012 Microsoft Corporation. All rights reserved.