

CONFIGURING DFS FAULT TOLERANCE

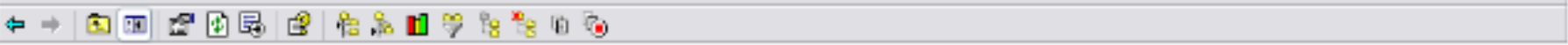
SERVER 2012

The screenshot shows the Windows Distributed File System console. The left pane displays a tree view with a red circle around the link `\\ES-NET.CO.UK/es-net`. The right pane shows a table of Dfs links:

Root Target	Dfs Referral	Status
\\ADMIN3/es-net	Enabled	Online
\\ADMIN1/es-net	Enabled	Online

Number of links: 0 displayed, 0 total

Although the Dfs Root is fault-tolerant, if any links inside the Dfs go down then they will be lost until the server is recovered. To create a fault-tolerant Dfs link, right-click on the Dfs root.



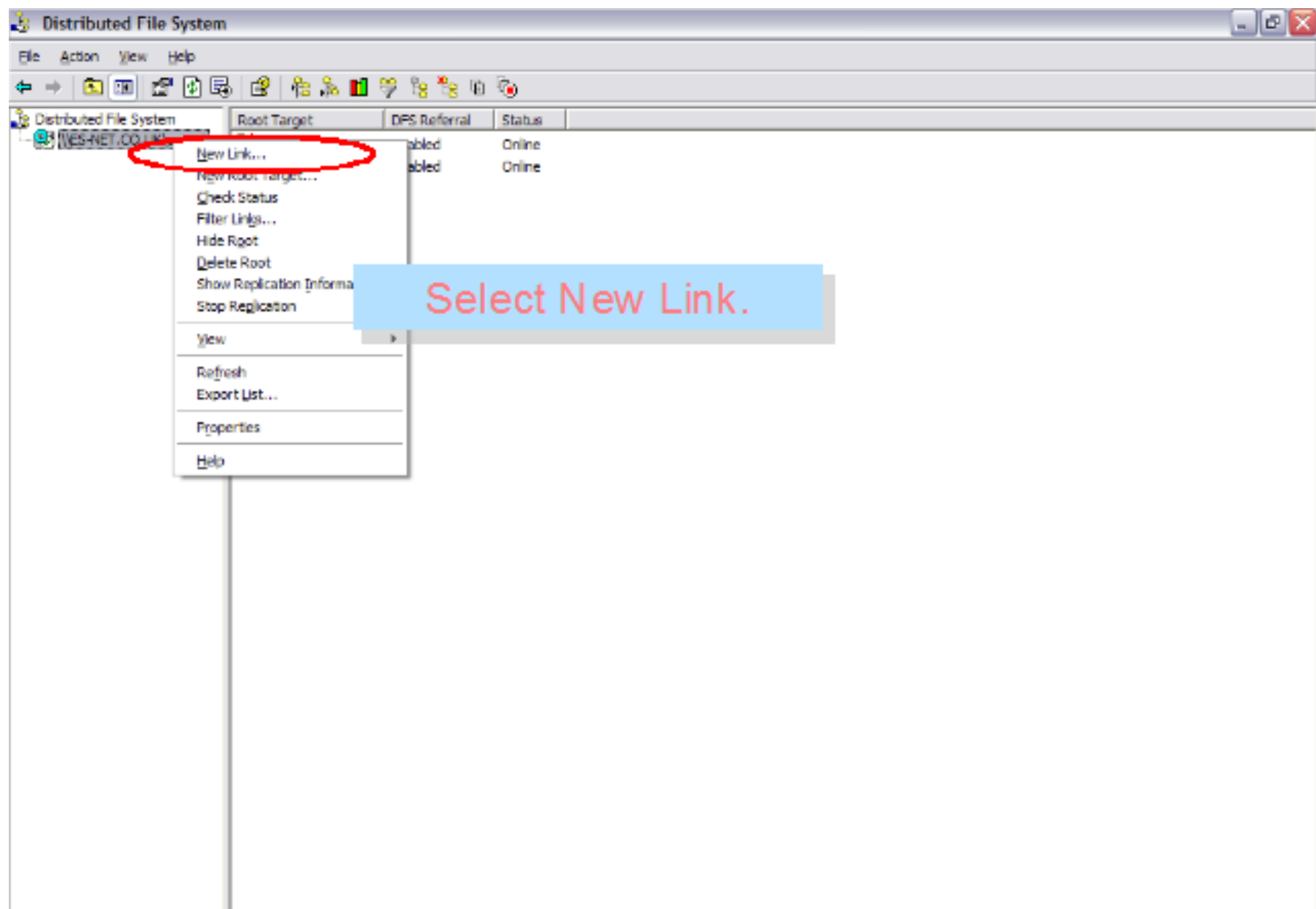
Root Target	DFS Referral	Status
-------------	--------------	--------

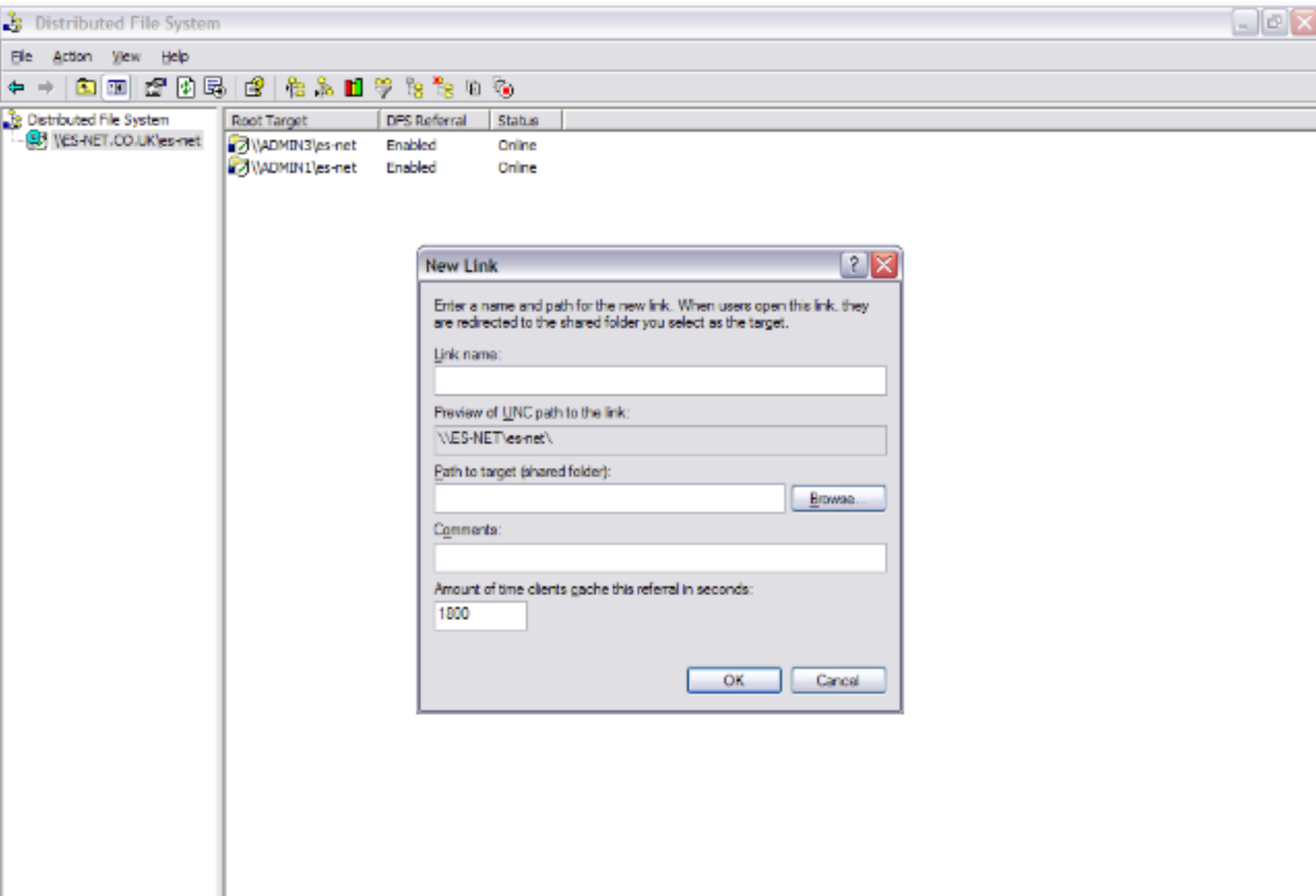
\\VES-NET.CO.UK\...

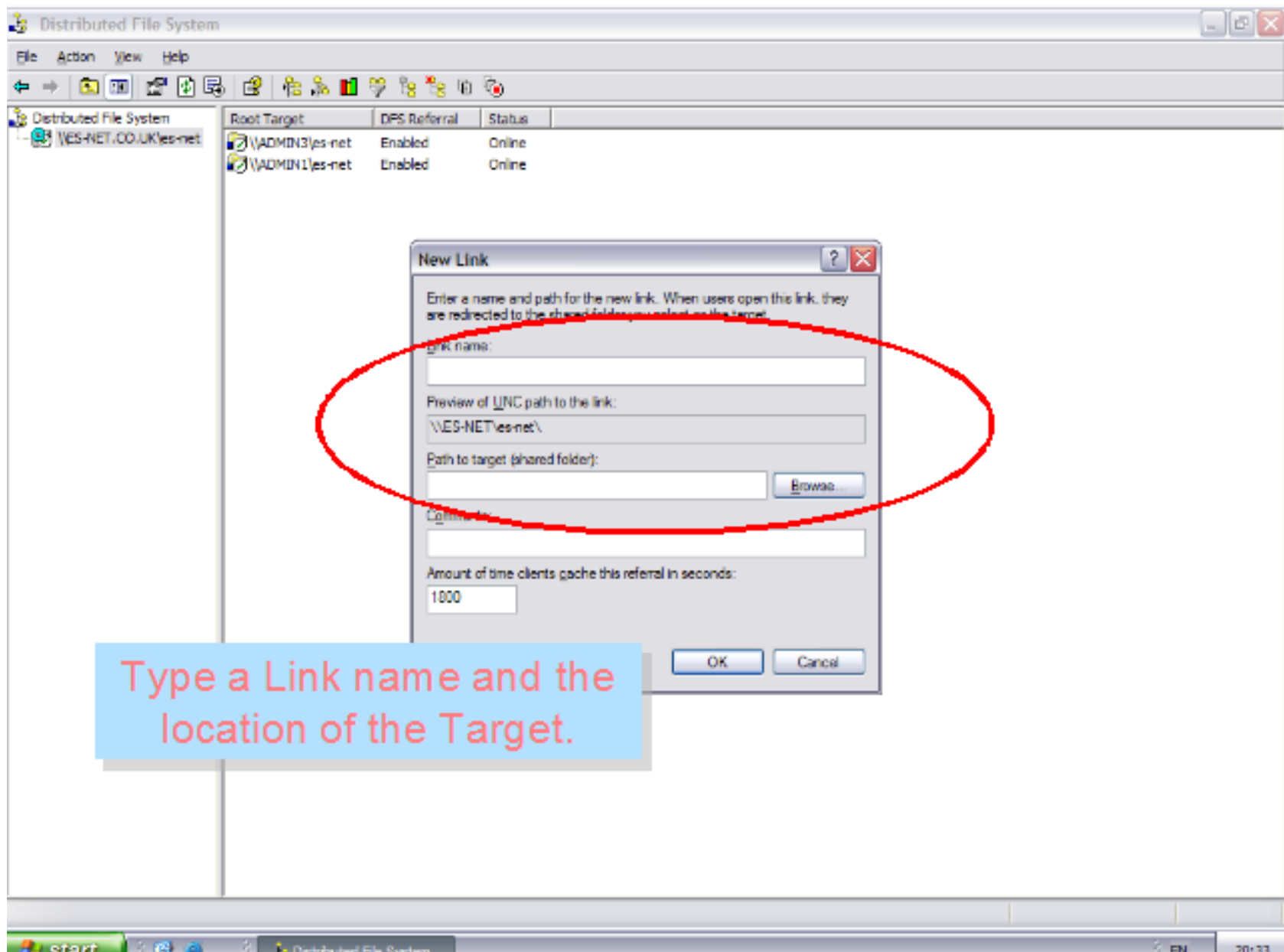
- New Link...
- New Root Target...
- Check Status
- Filter Links...
- Hide Root
- Delete Root
- Show Replication Information
- Stop Replication
- View
- Refresh
- Export List...
- Properties
- Help

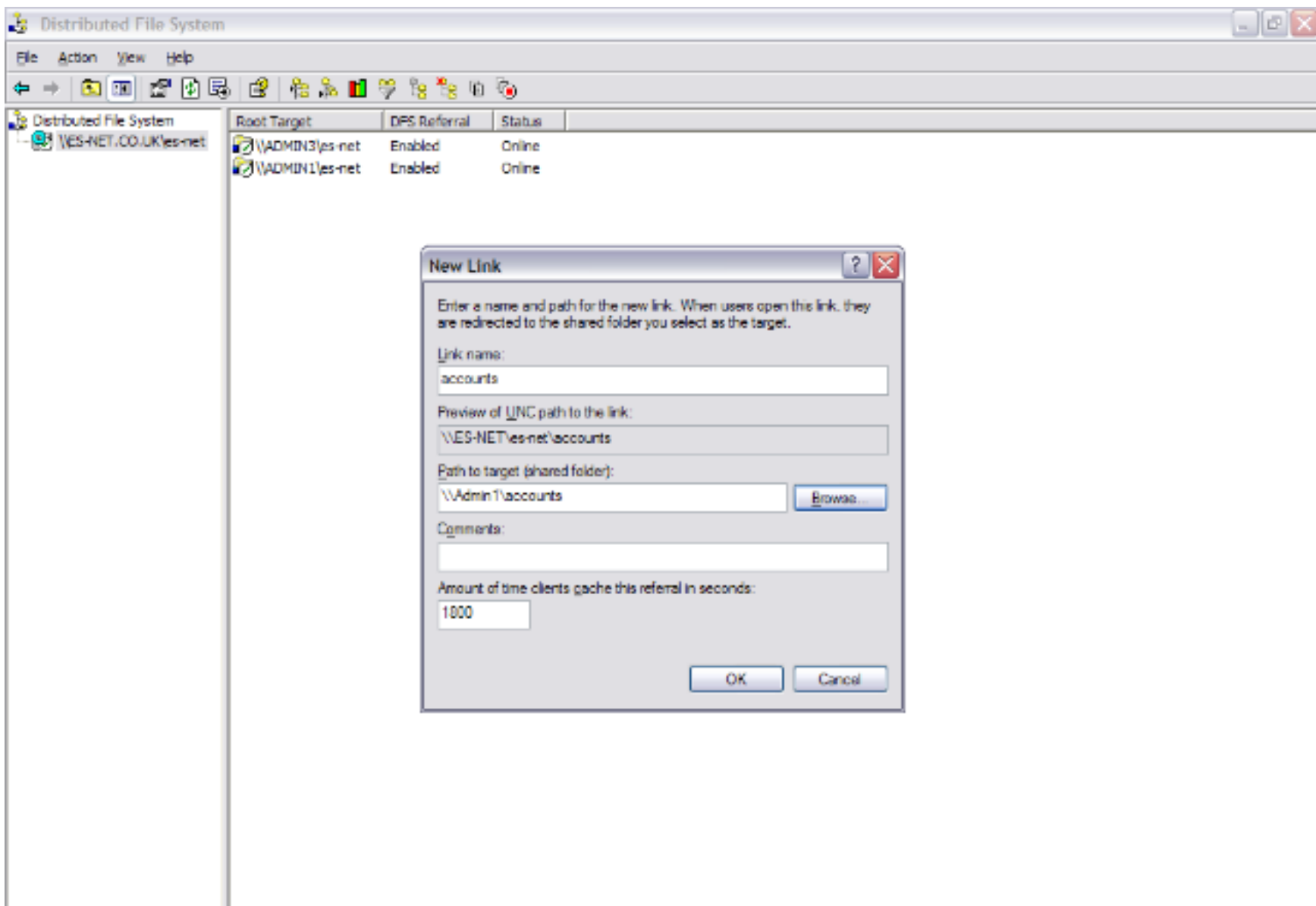
abled Online

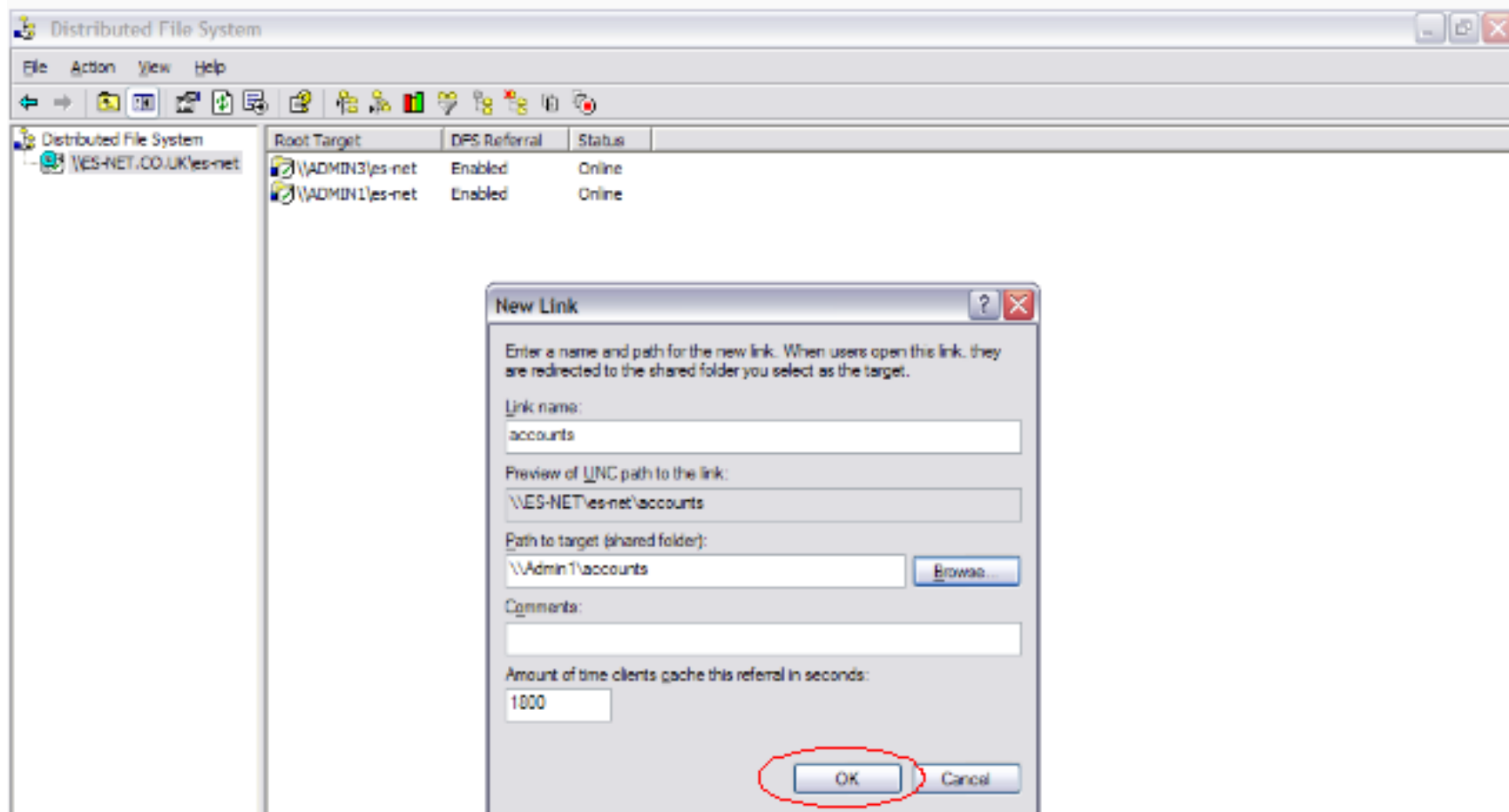
abled Online



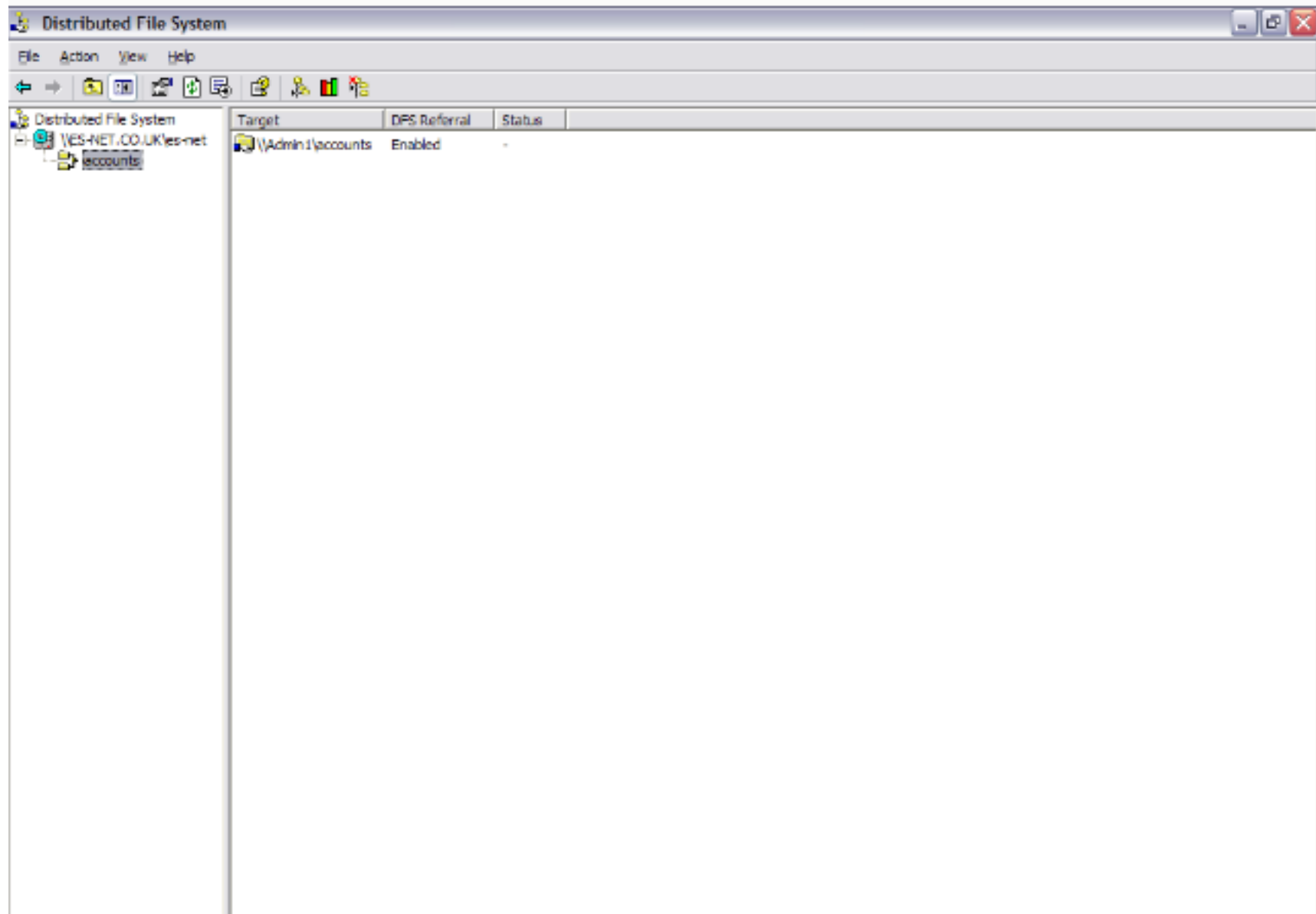








Accounts will link to
\\Admin1\accounts. Click
OK to continue.



Distributed File System

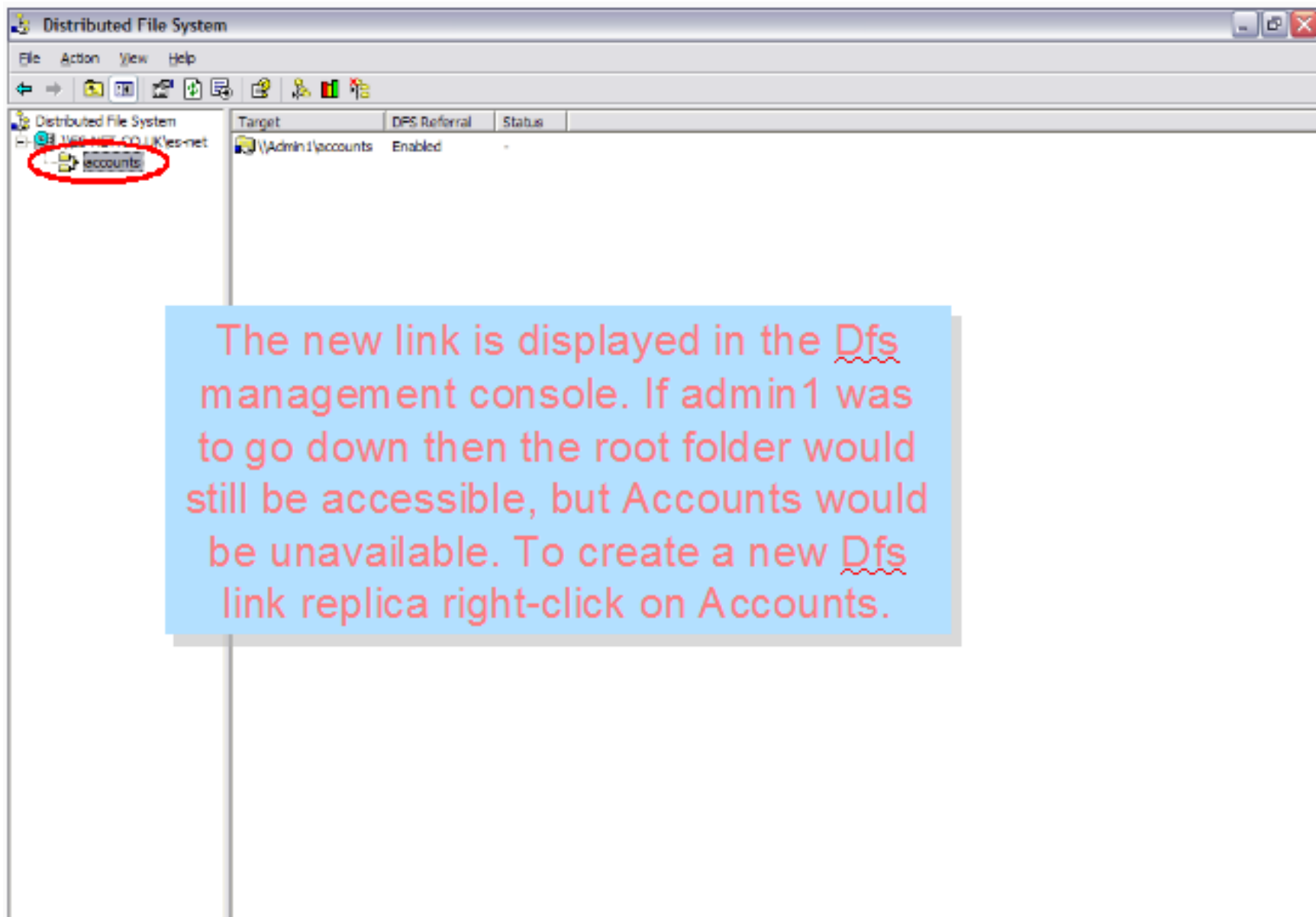
File Action View Help

← → [Icons]

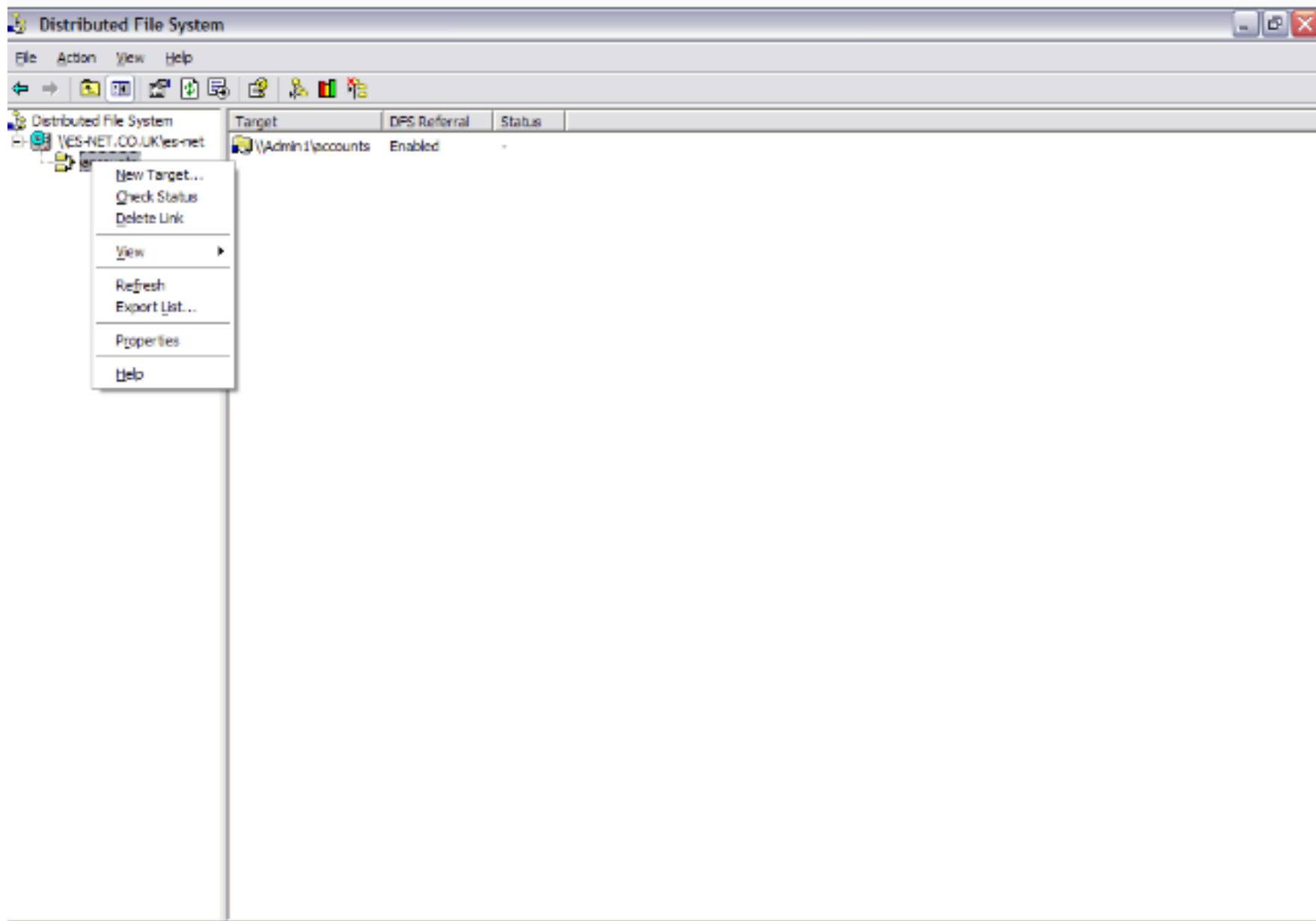
Distributed File System

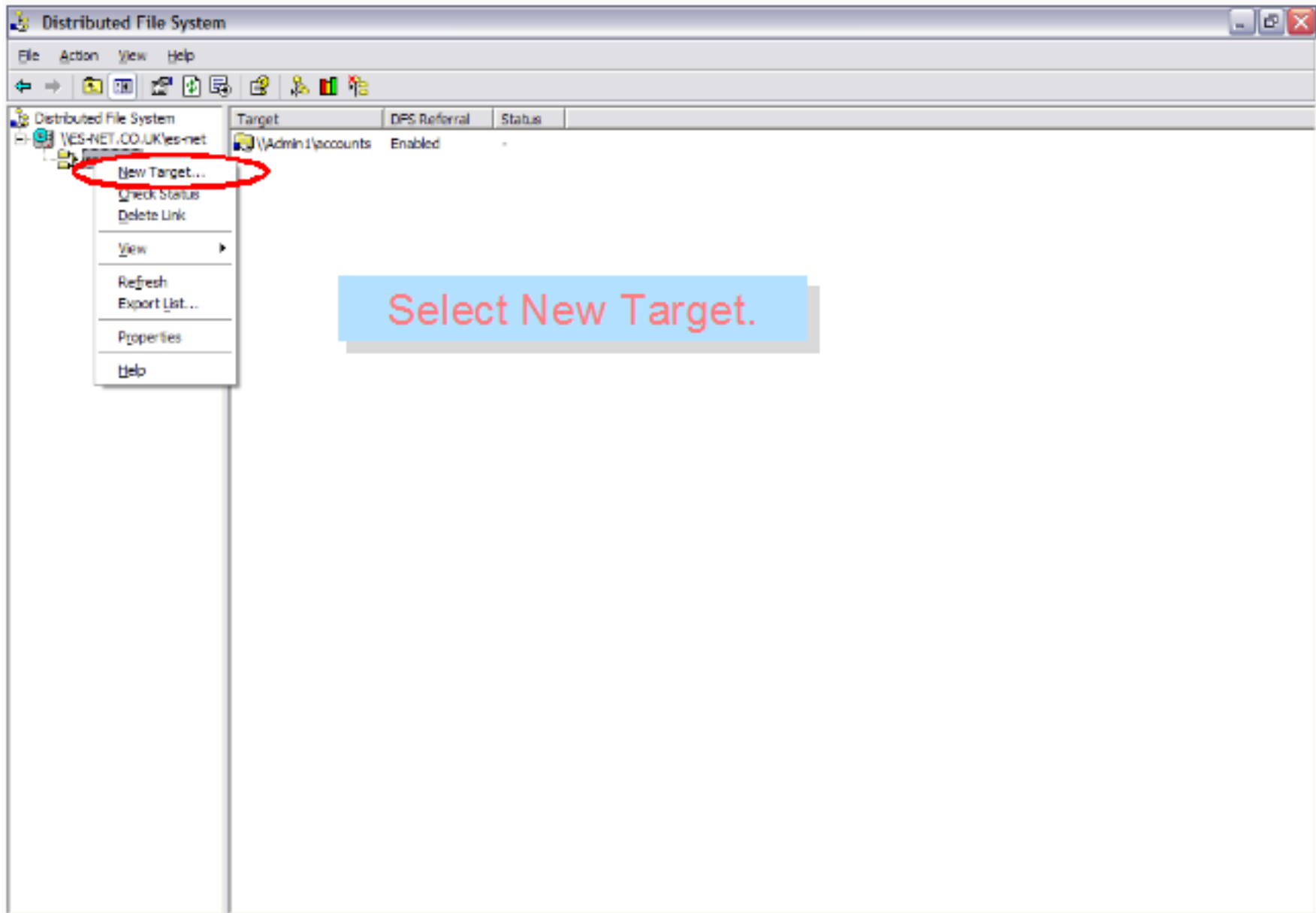
- [-] \YES-NET.CO.UK\yes-net
 - [+] accounts

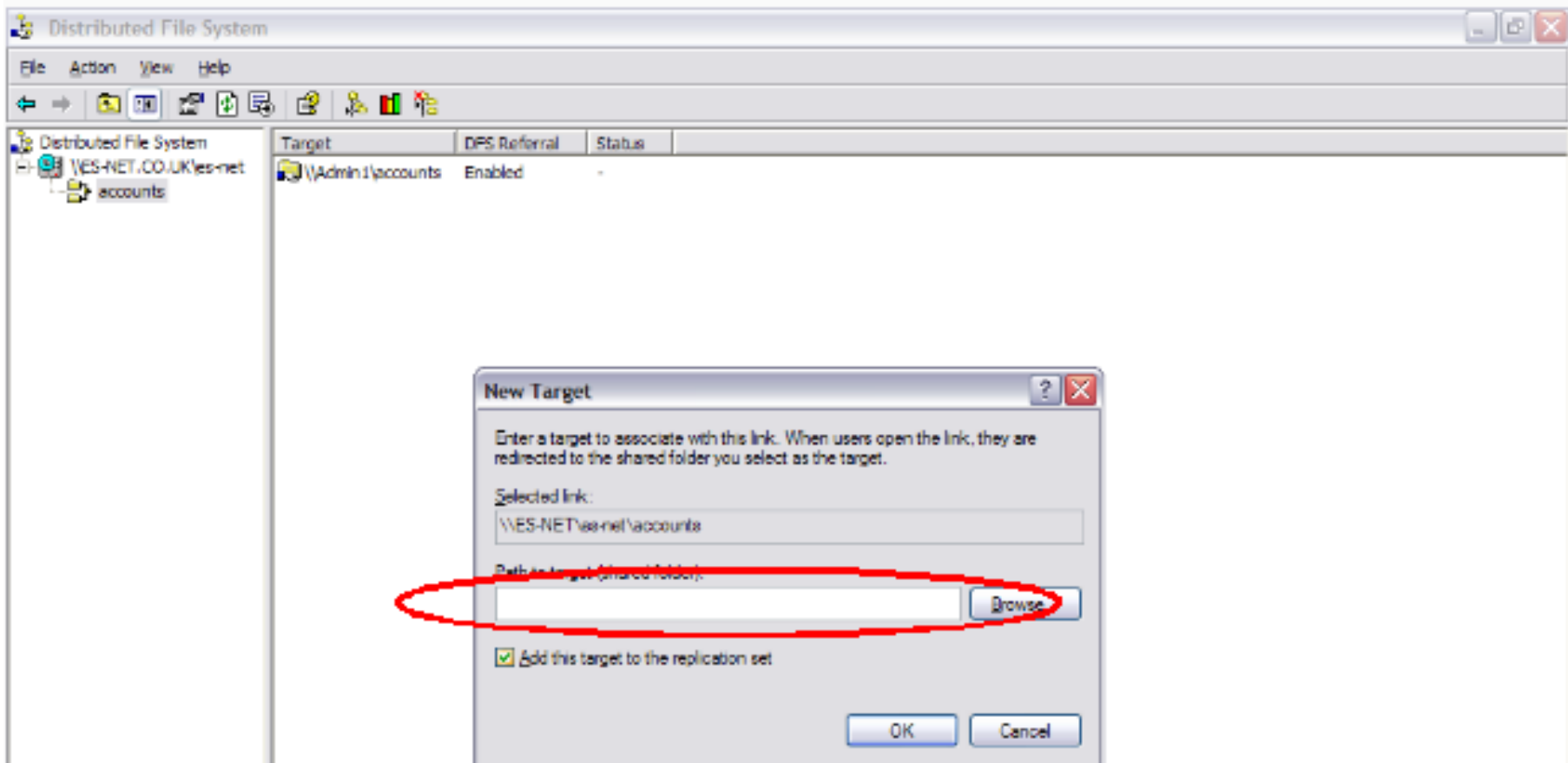
Target	DPS Referral	Status
[+] \Admin 1\accounts	Enabled	-



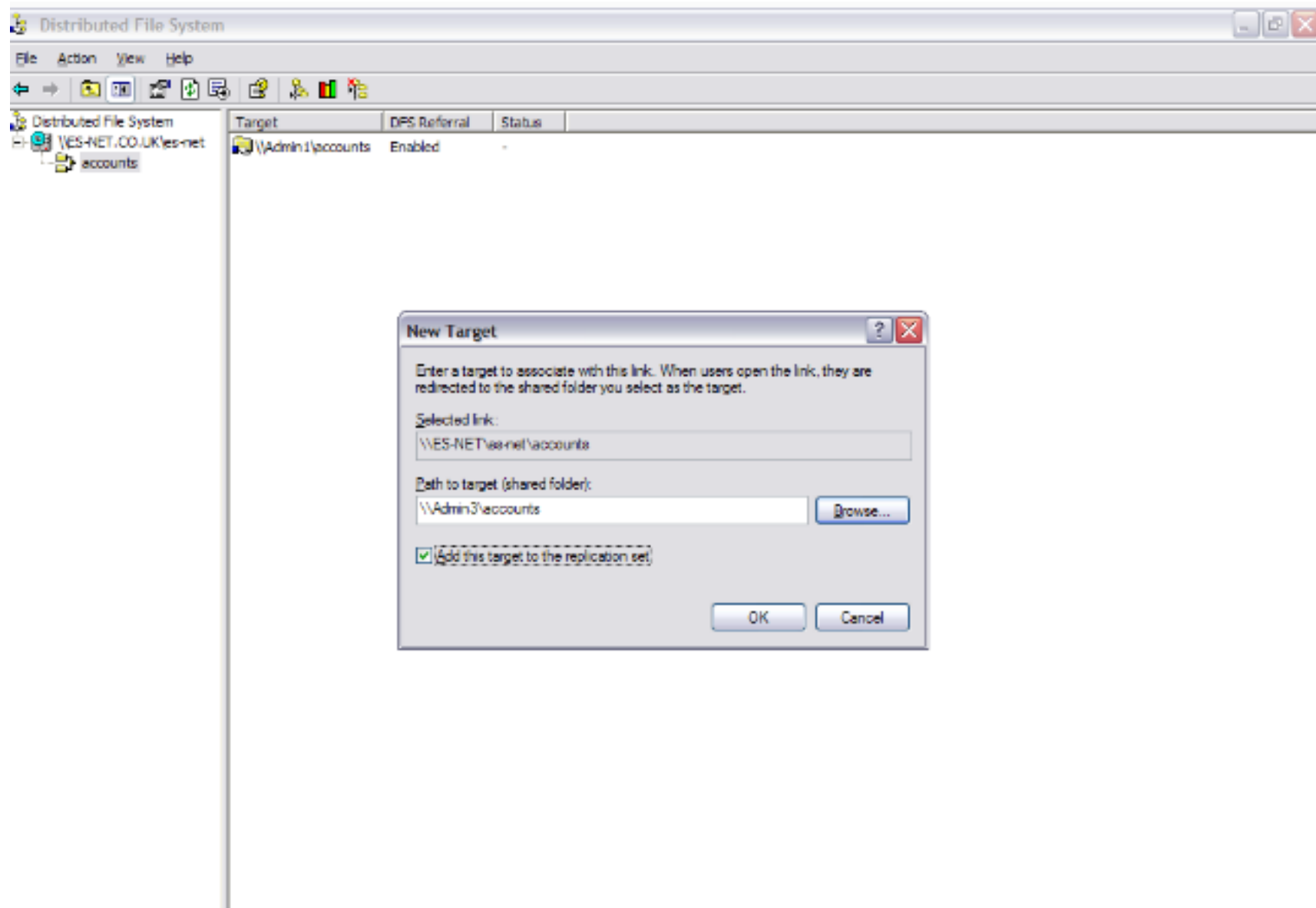
The new link is displayed in the Dfs management console. If admin1 was to go down then the root folder would still be accessible, but Accounts would be unavailable. To create a new Dfs link replica right-click on Accounts.

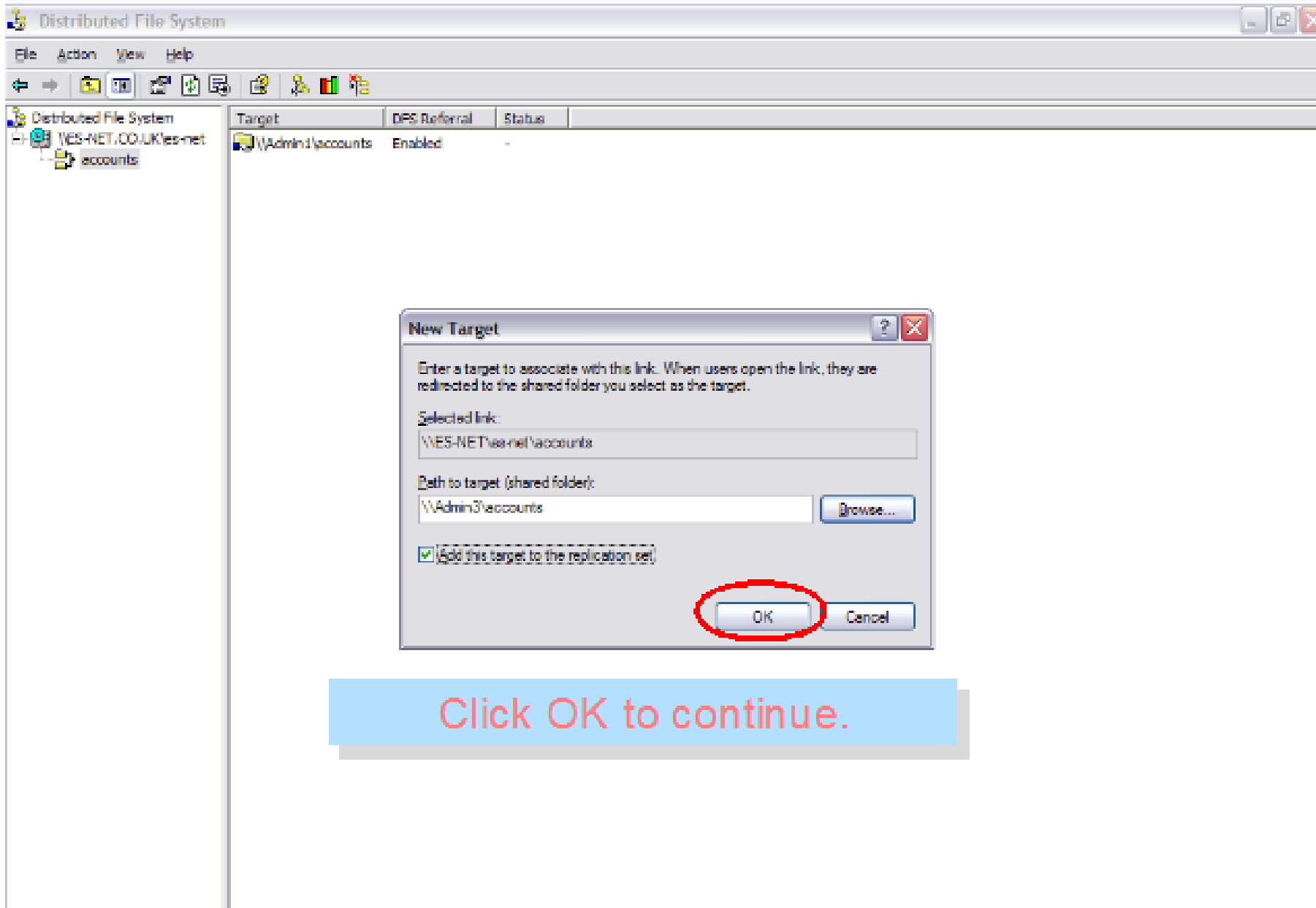






Type in the network location of the folder to be used as a replica of Accounts.





Click OK to continue.

Distributed File System

File Action View Help

← → 📁 📄 📄 📄 📄 📄 📄 📄 📄 📄 📄

Distributed File System

- YES-NET.CO.UK\es-net
 - accounts

Target	DPS Referral	Status
📁 \Admin\accounts	Enabled	-
📁 \Admin\accounts	Enabled	-

Distributed File System

The target cannot be replicated until replication is configured. Do you want to configure it now?

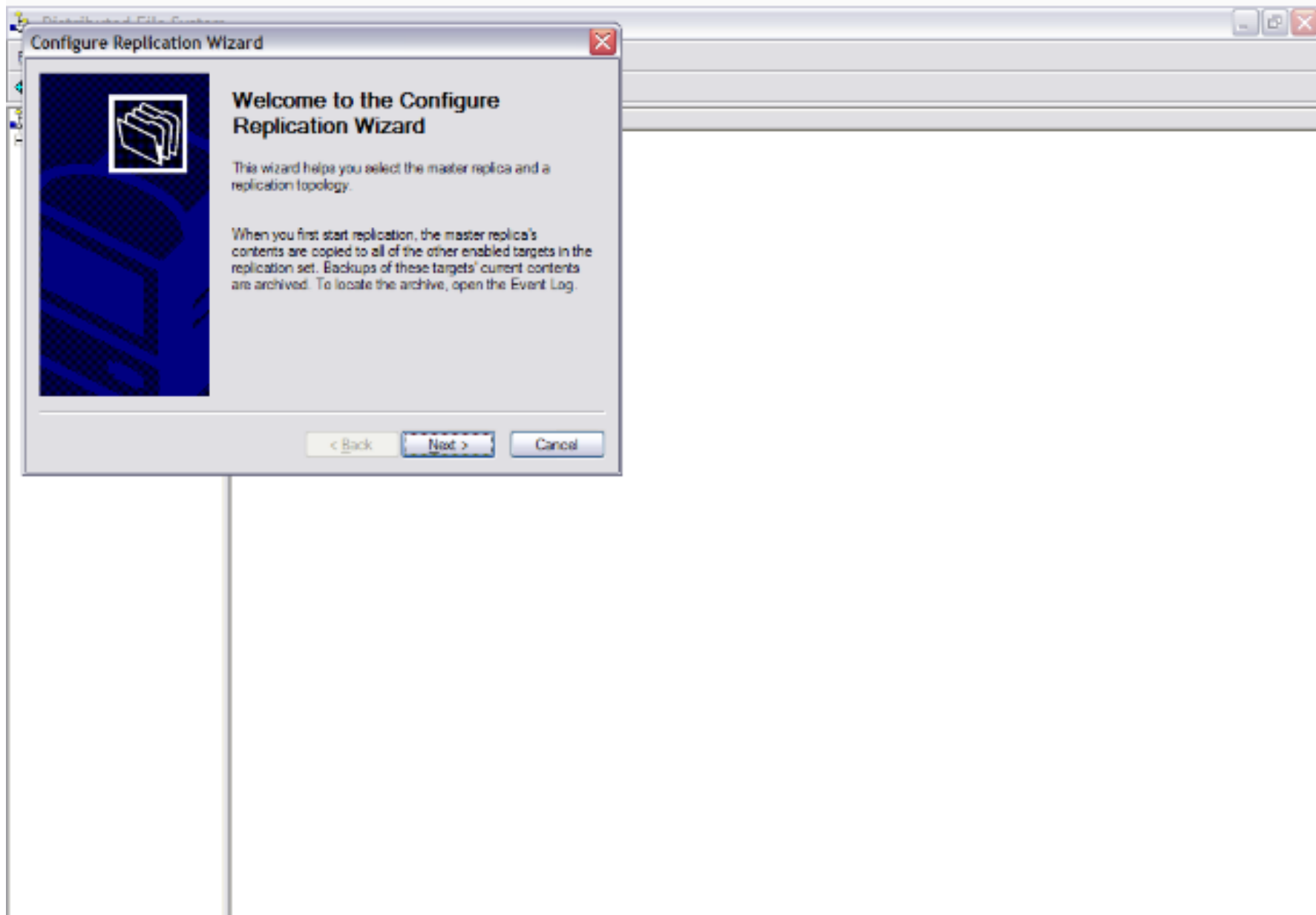
Yes No

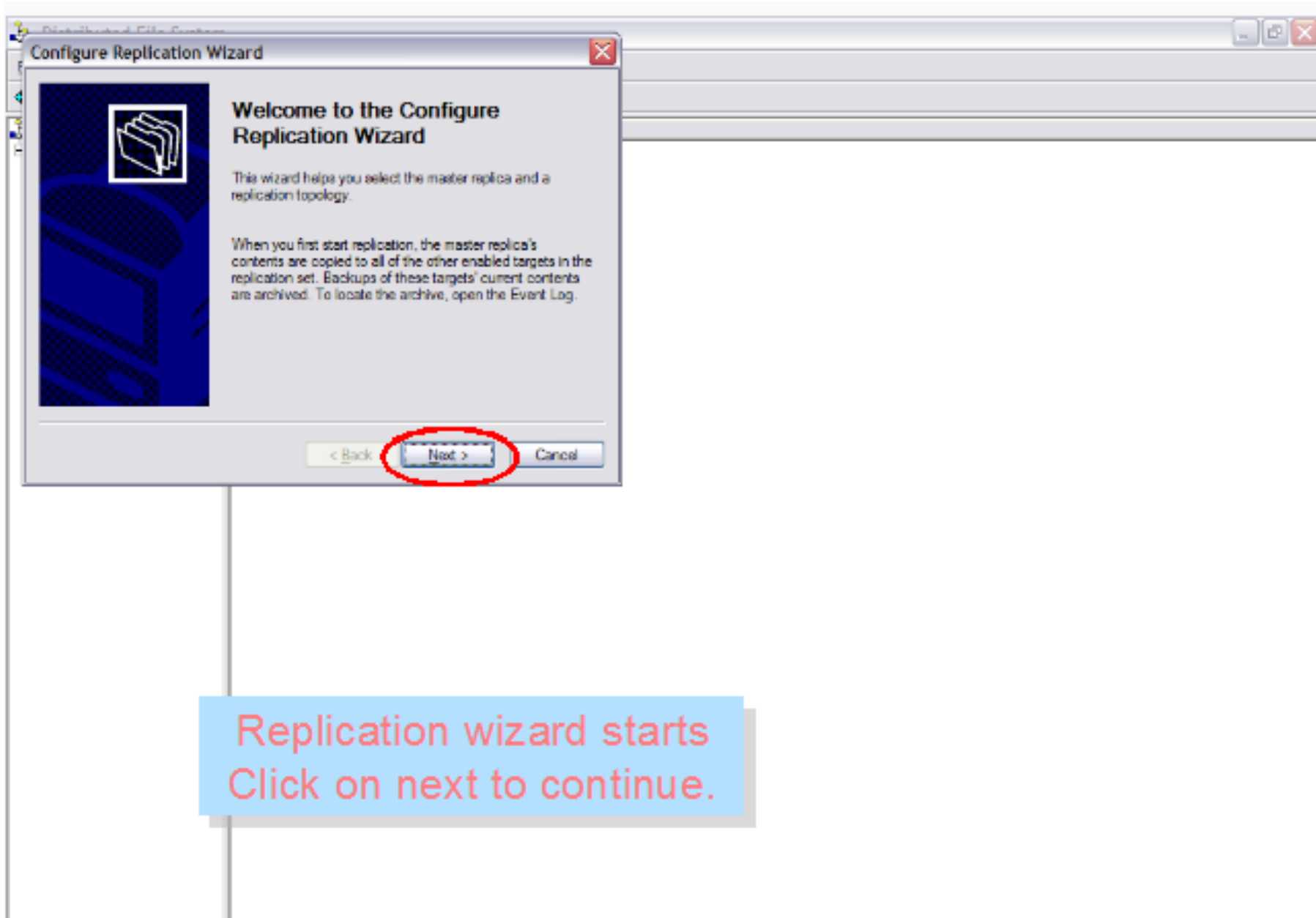
The screenshot shows the Windows Distributed File System console. The left pane displays the tree structure: Distributed File System > YES-NET.CO.UK\yes-net > accounts. The right pane shows a table with the following data:

Target	DPS Referral	Status
\\Admin1\accounts	Enabled	-
\\Admin3\accounts	Enabled	-

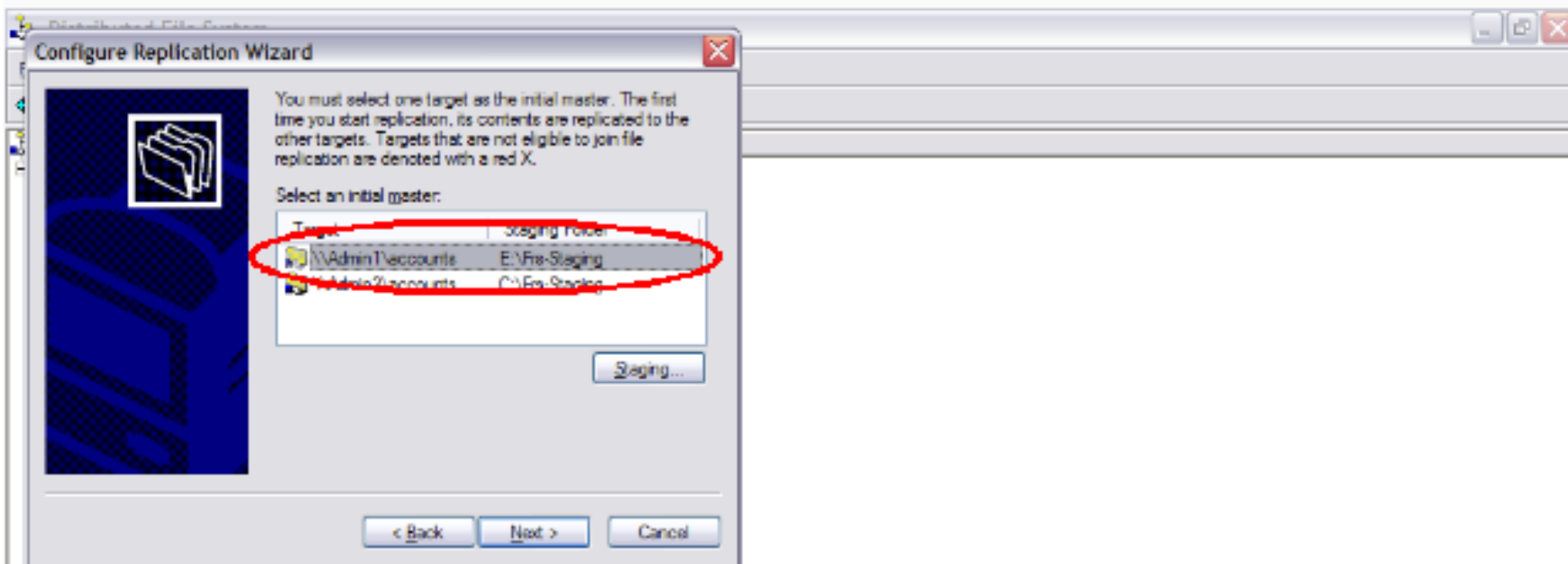
A dialog box titled "Distributed File System" is overlaid on the console. The message reads: "The target cannot be replicated until replication is configured. Do you want to configure it now?". The "Yes" button is circled in red.

Accounts will point to both shared folders \\admin1\accounts and \\admin3\accounts allowing for fault-tolerance. To enable replication click on Yes.





Replication wizard starts
Click on next to continue.



Before replication can take place a folder will need to be selected as an initial master. Select \\admin1\accounts.

Configure Replication Wizard



The topology controls the direction in which information is replicated between targets.

Select the topology you want for this replication set.

Topology:

Ring

< Back

Finish

Cancel

Configure Replication Wizard



The topology controls the direction in which information is replicated between targets.

Select the topology you want for this replication set.

Topology:

Ring

< Back

Click on Topology.

Configure Replication Wizard



The topology controls the direction in which information is replicated between targets.

Select the topology you want for this replication set.

Topology:

- Custom (build connections on my own later)
- Ring
- Hub and spoke
- Full mesh
- Custom (build connections on my own later)

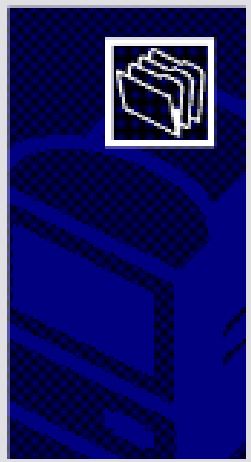
< Back

Finish

Cancel

Select Custom.

Configure Replication Wizard



The topology controls the direction in which information is replicated between targets.

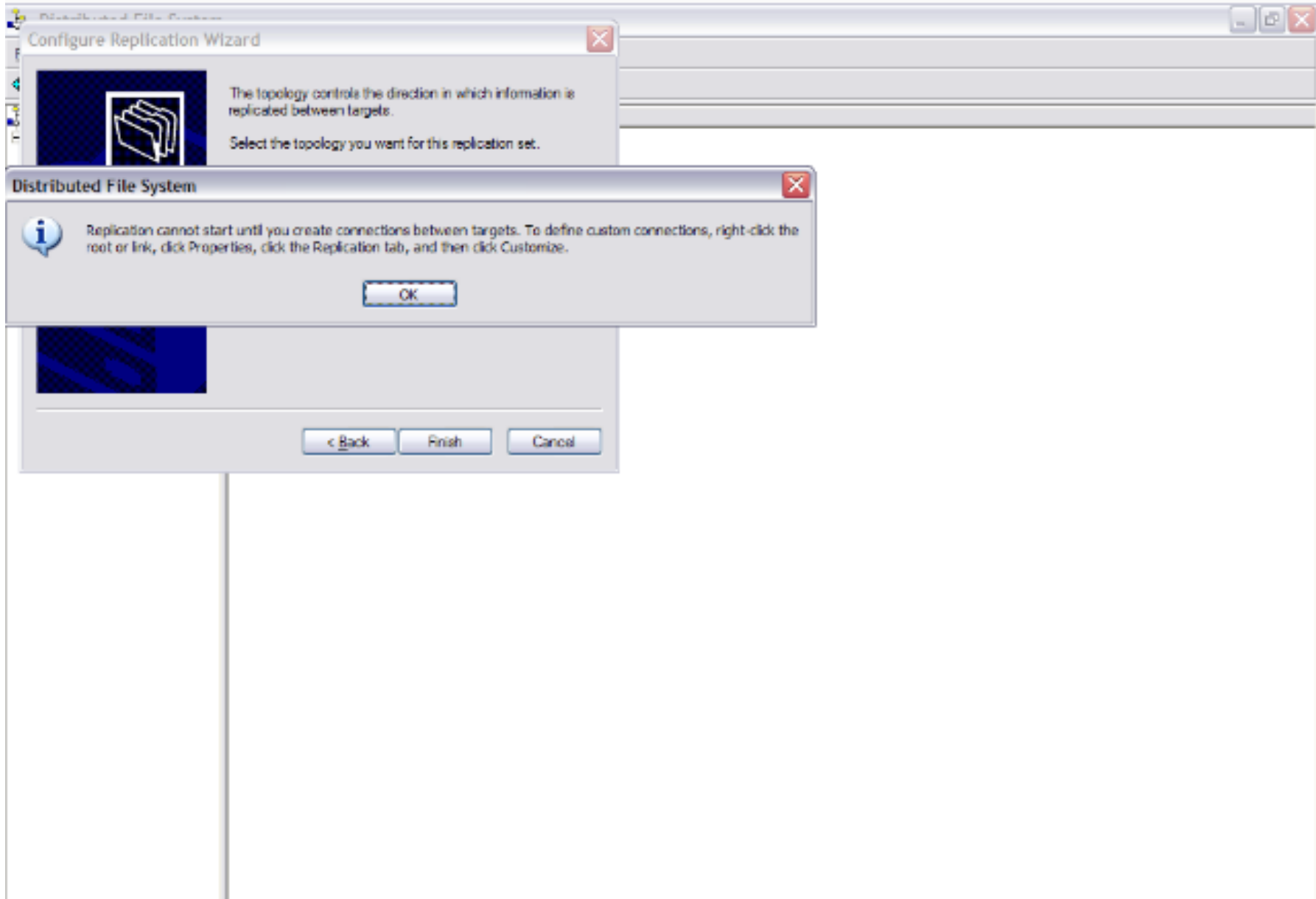
Select the topology you want for this replication set.

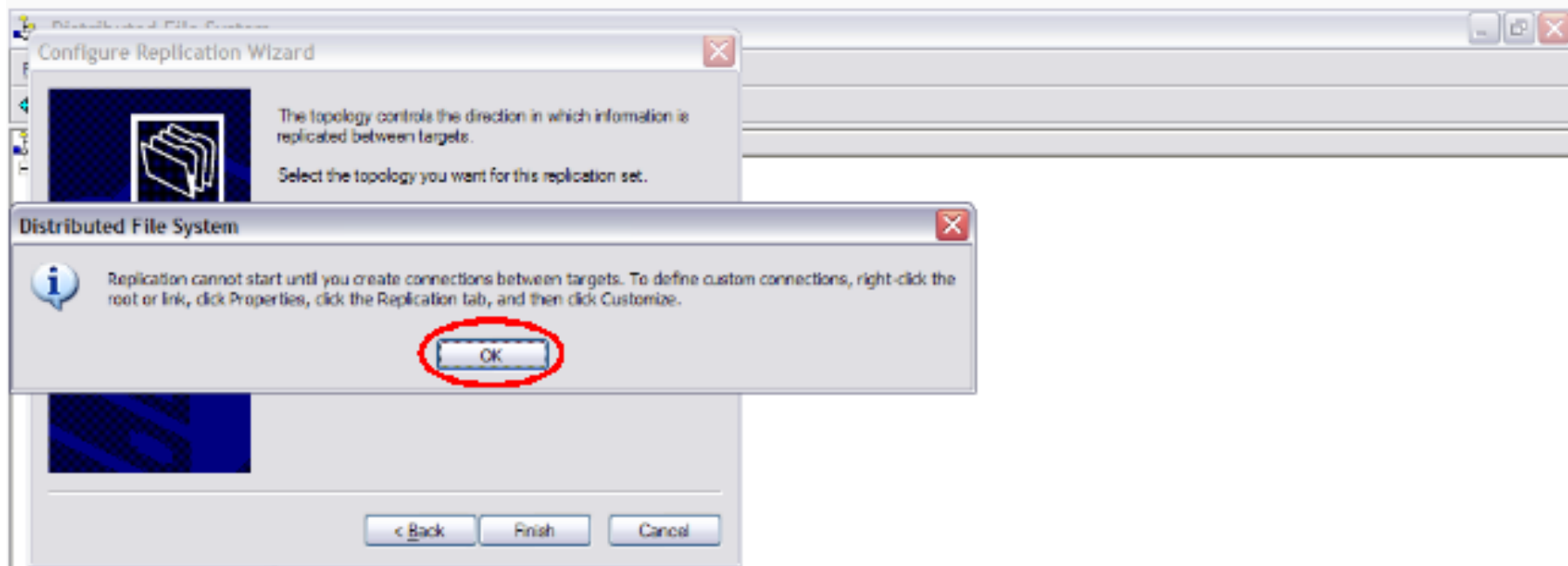
Topology:

Custom (build connections on my own later) ▼

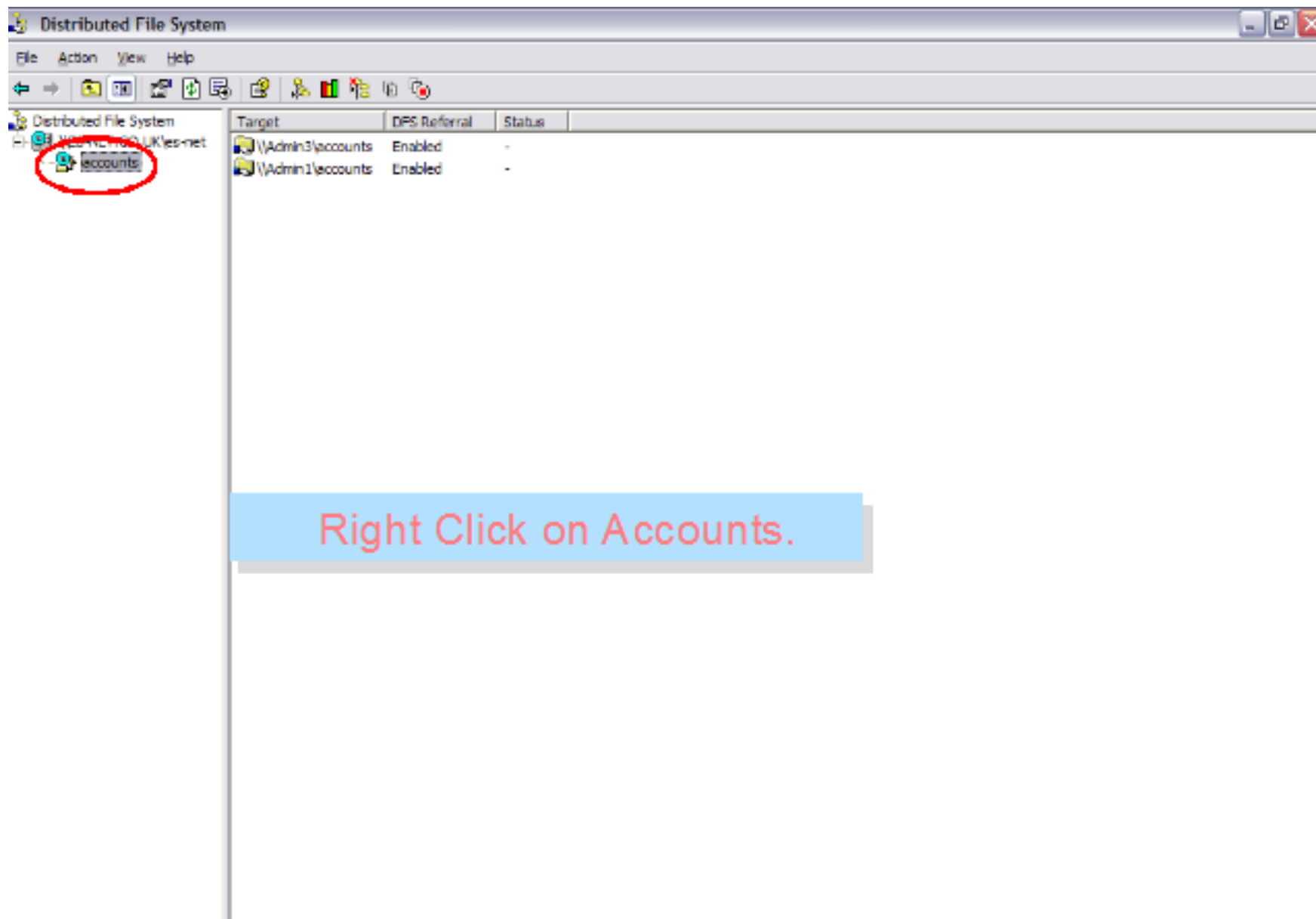
< Back **Finish** Cancel

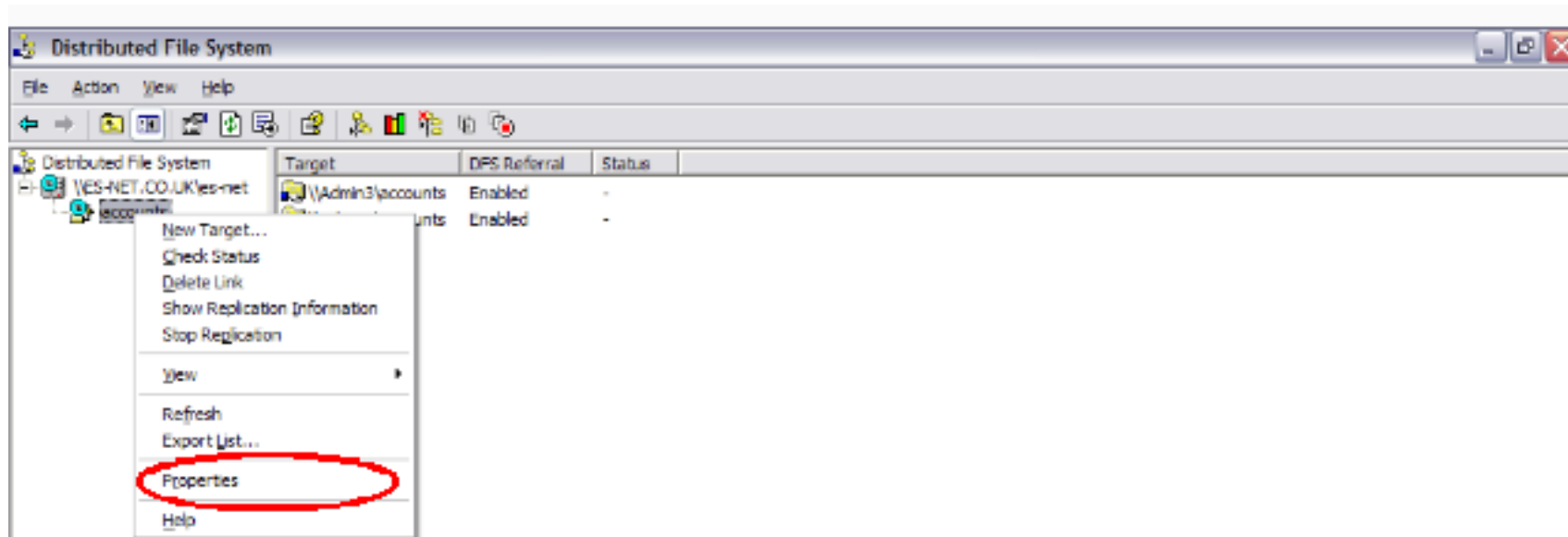
Click on Finish to continue.



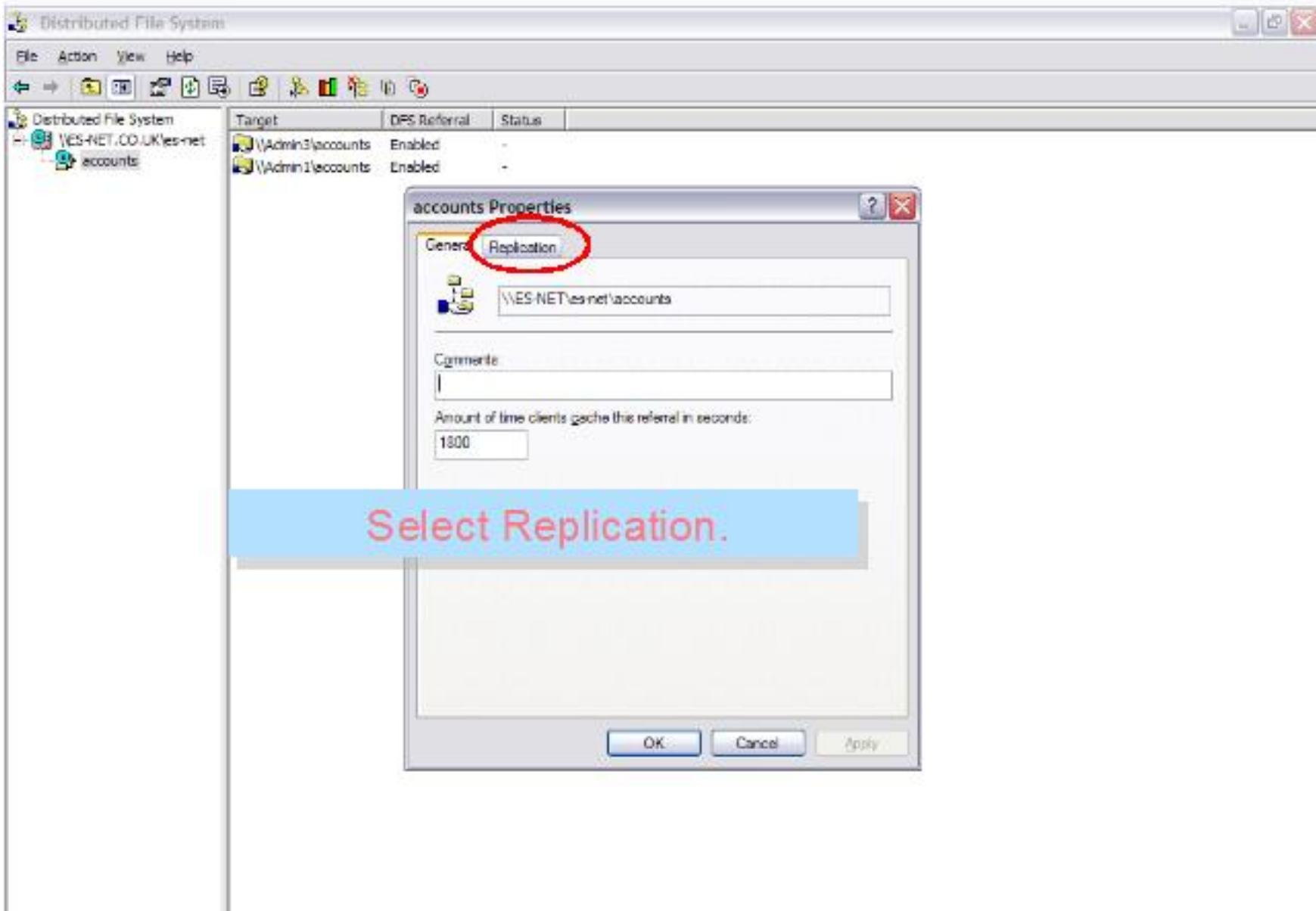


Connections will have to be created before replication can be started. Click OK.

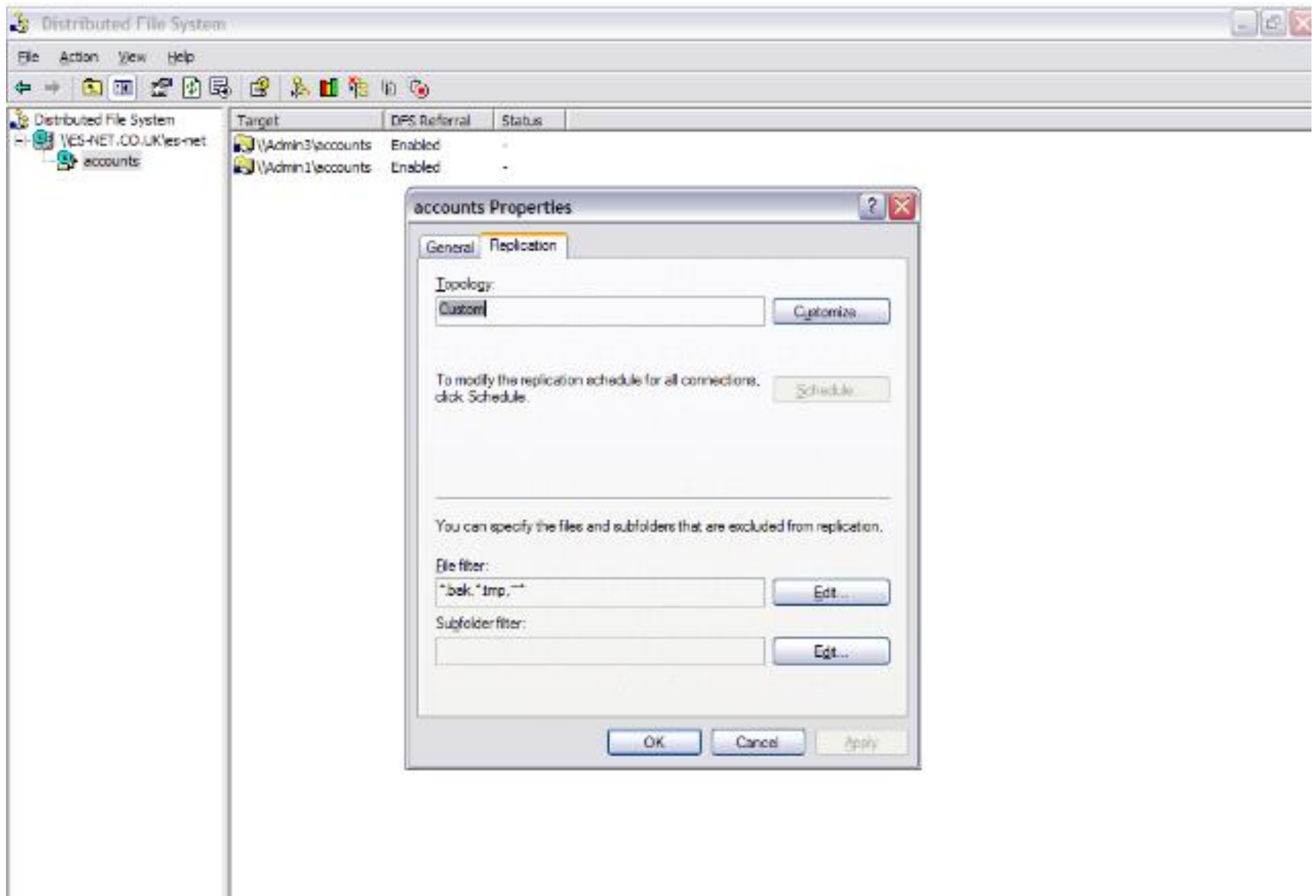


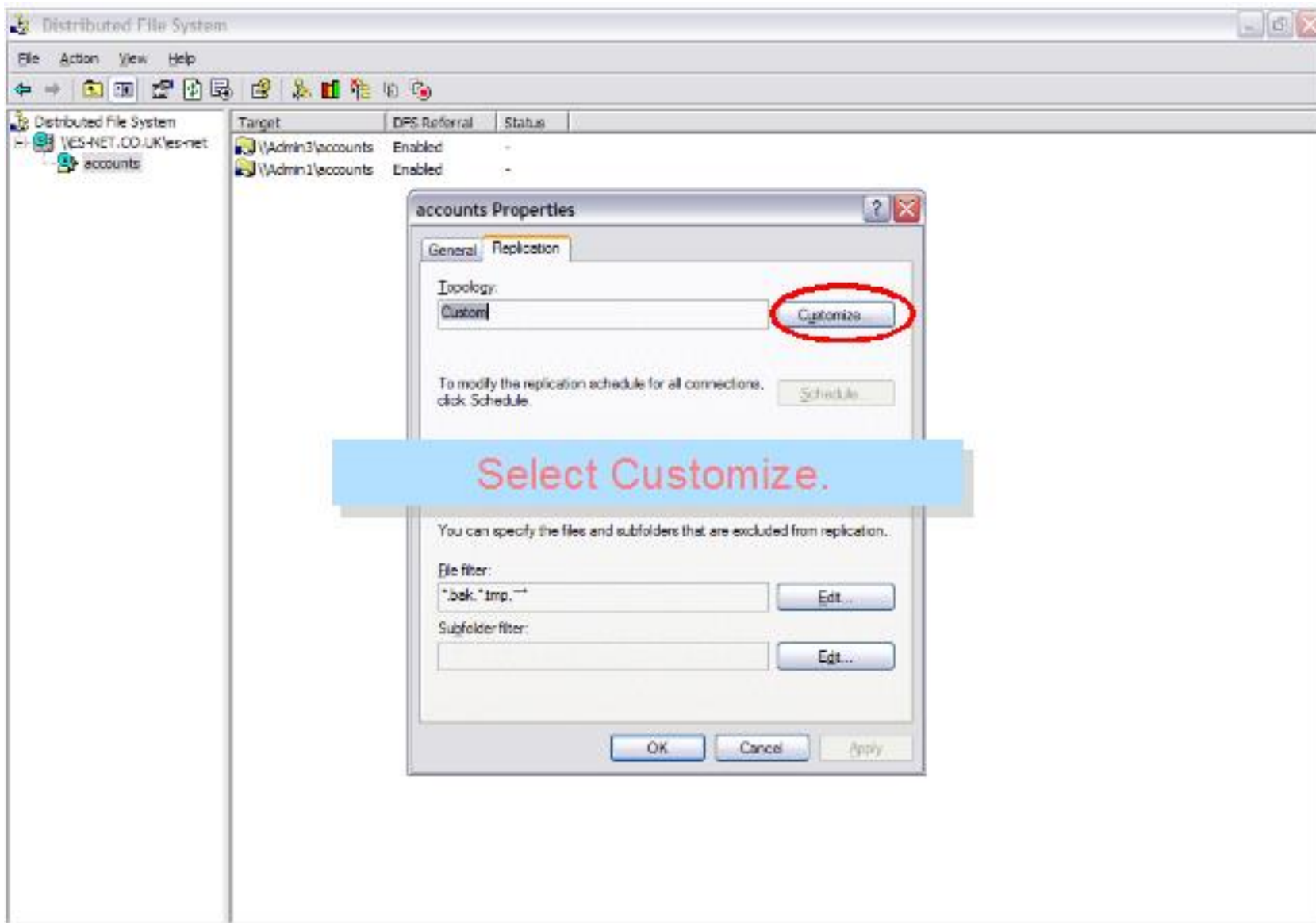


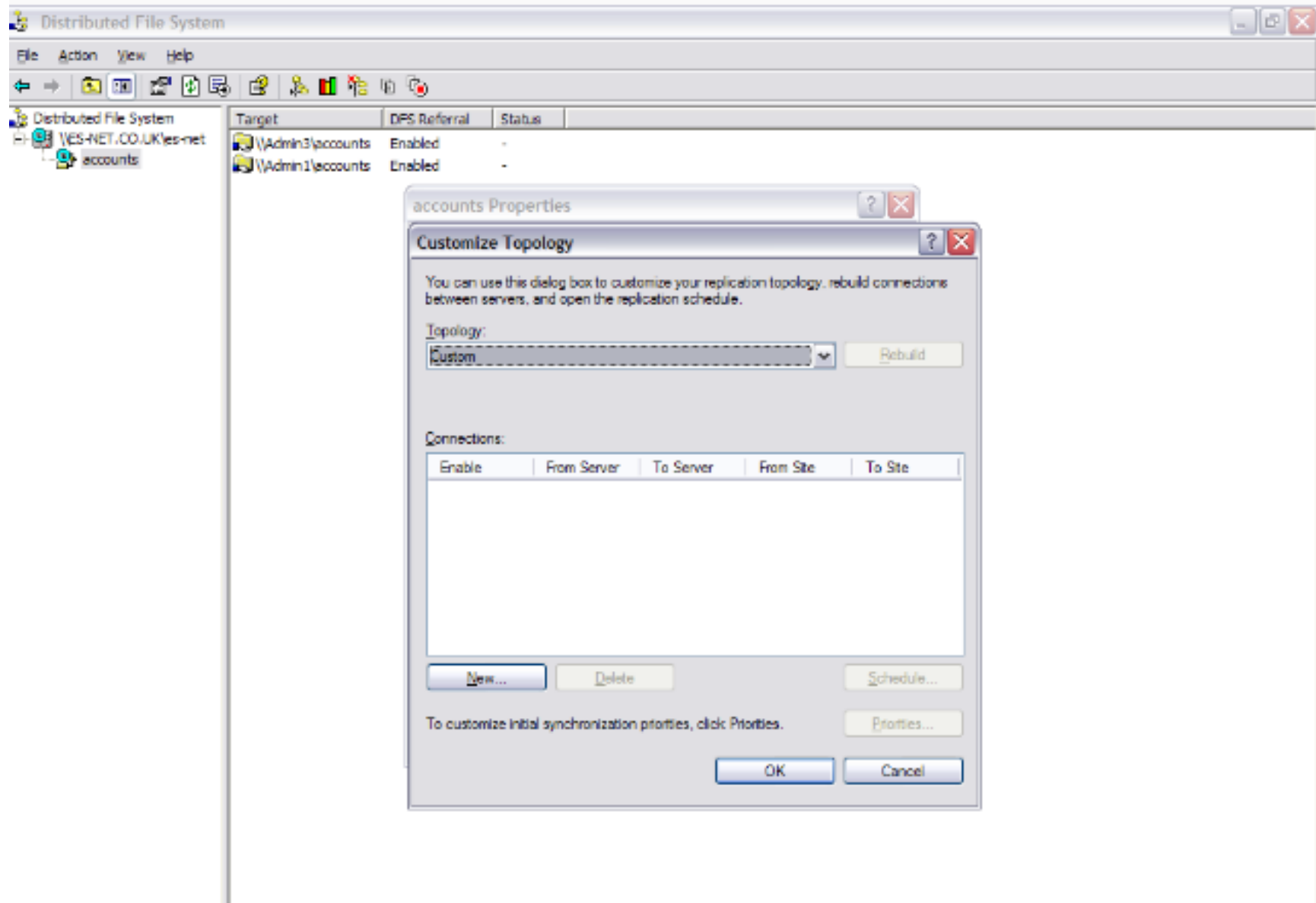
Click on Properties.

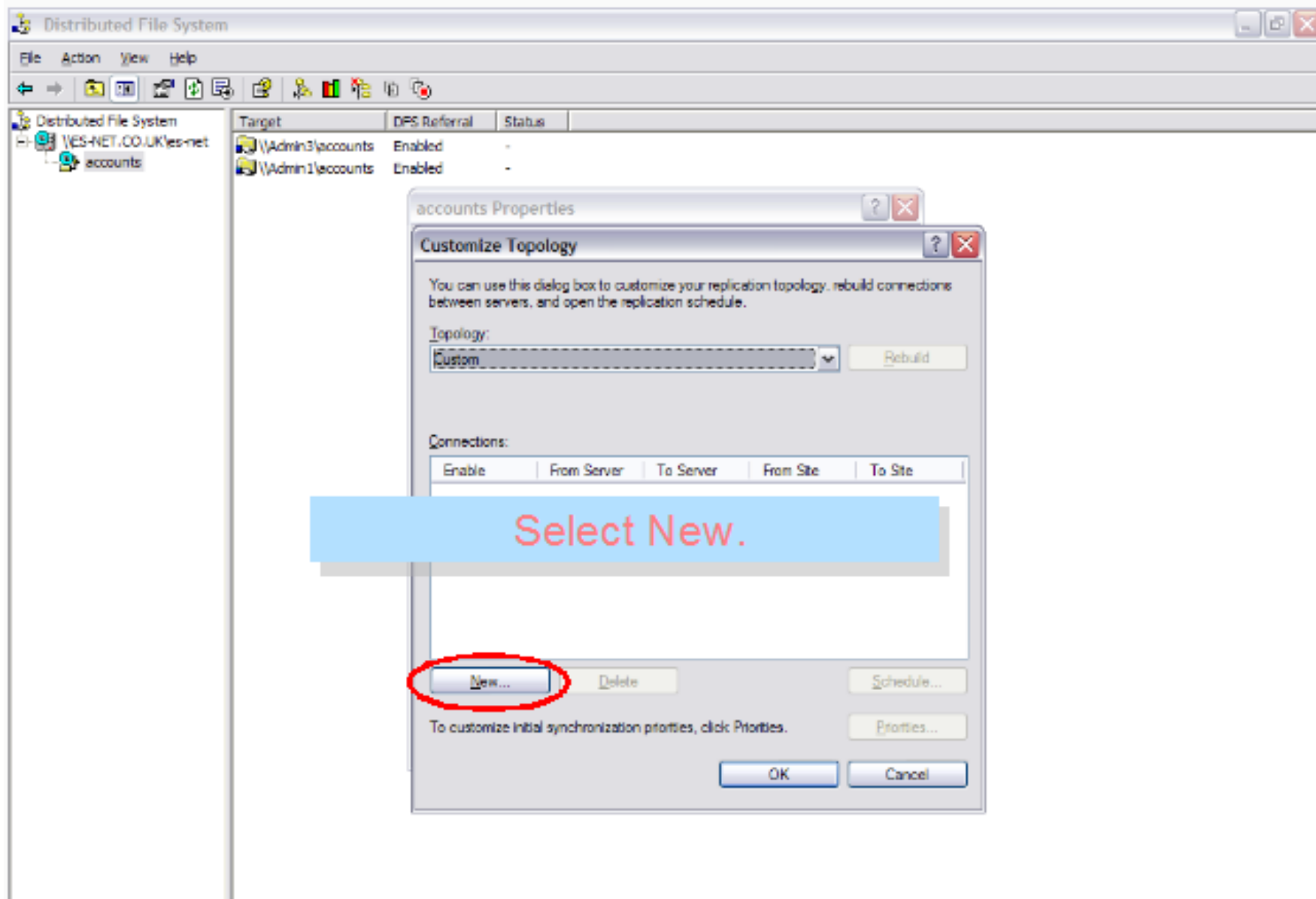


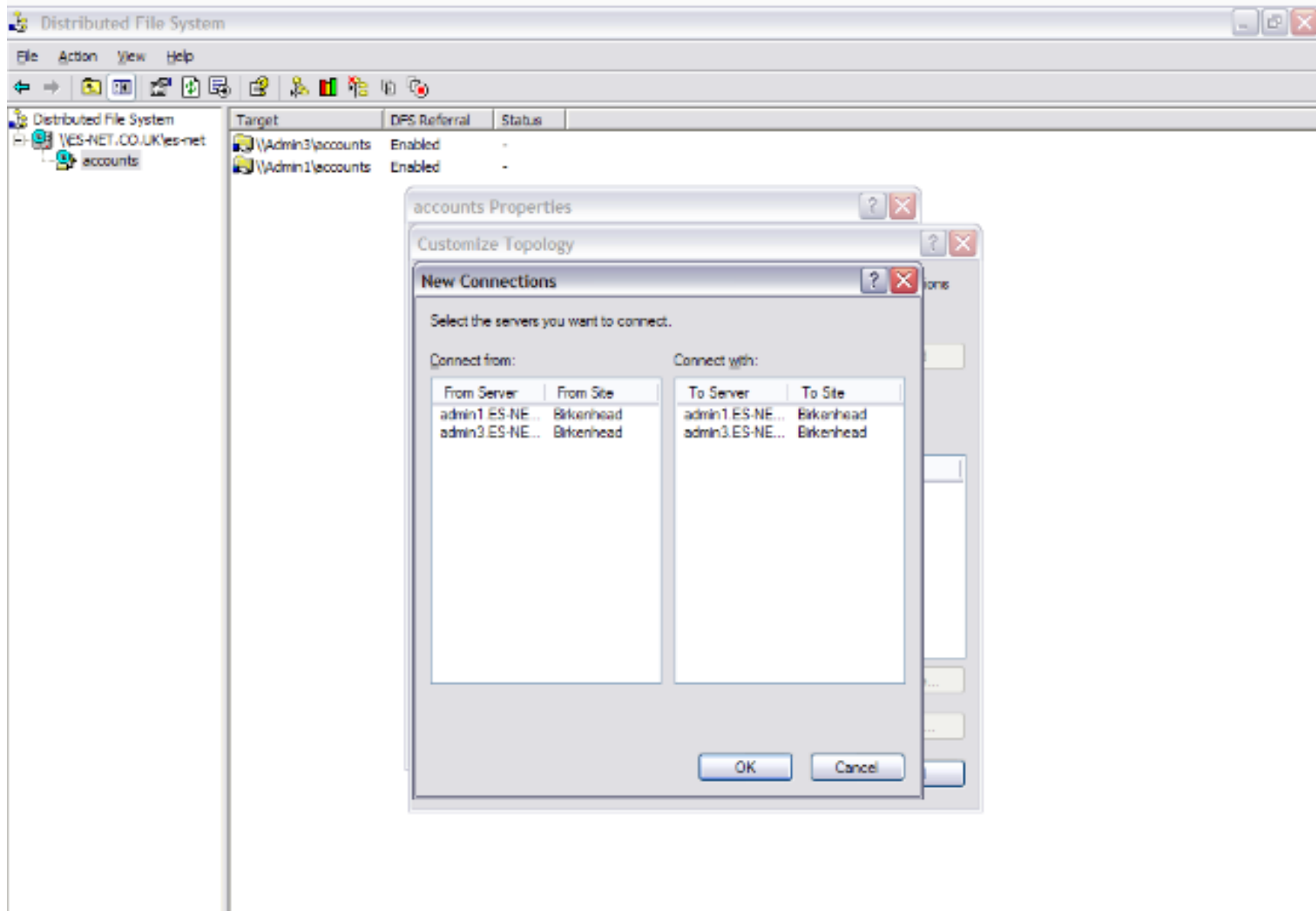
Select Replication.

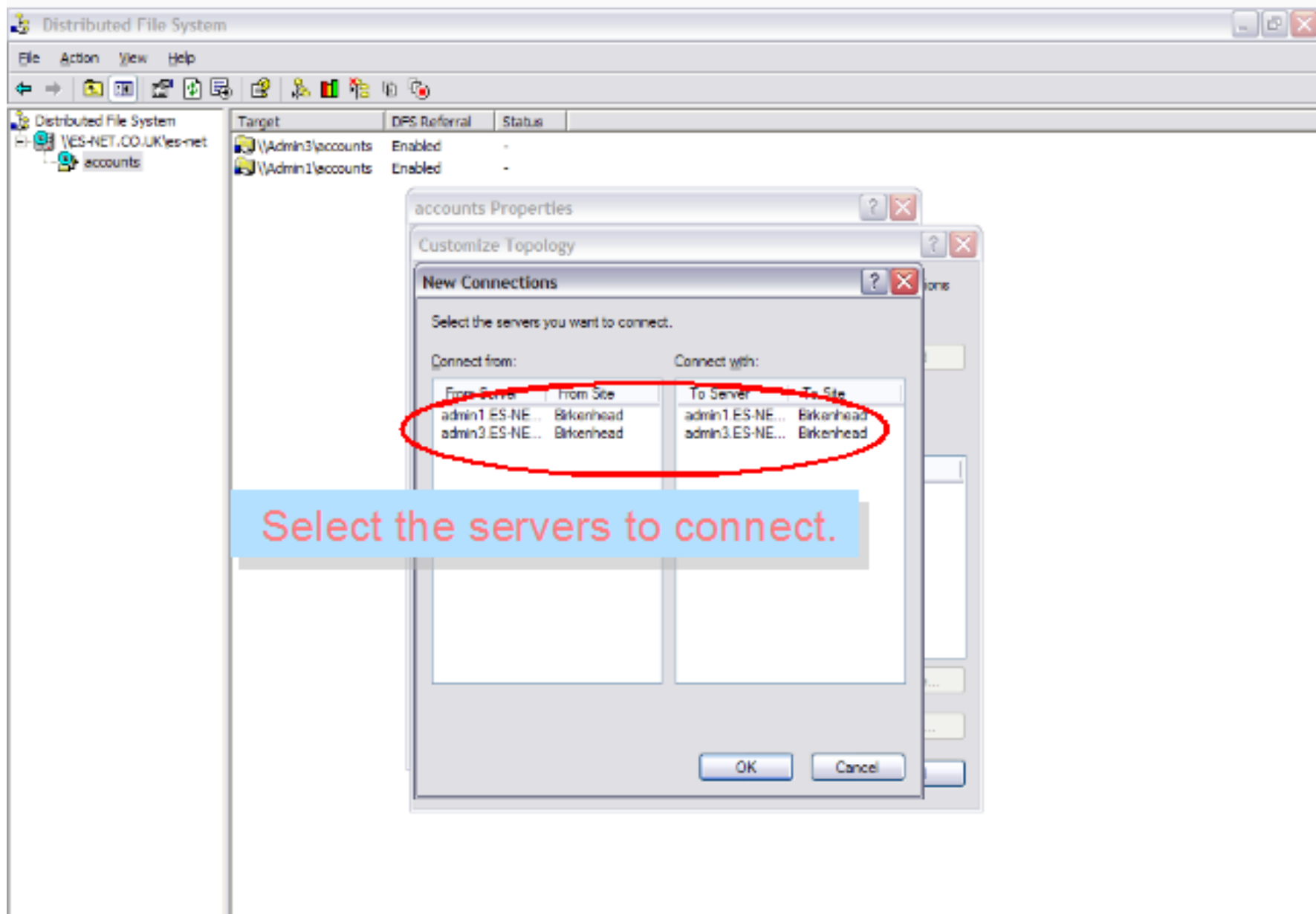


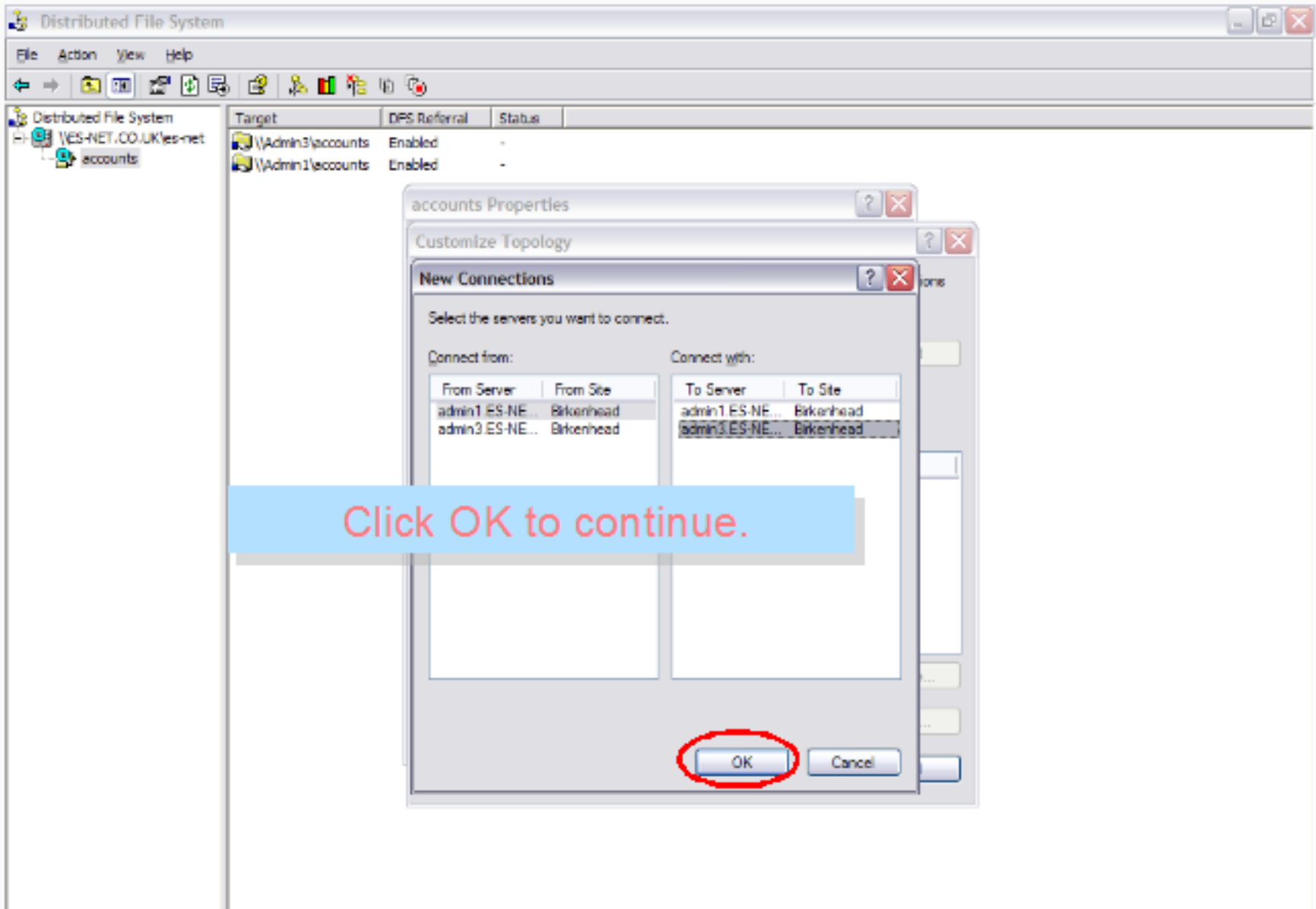


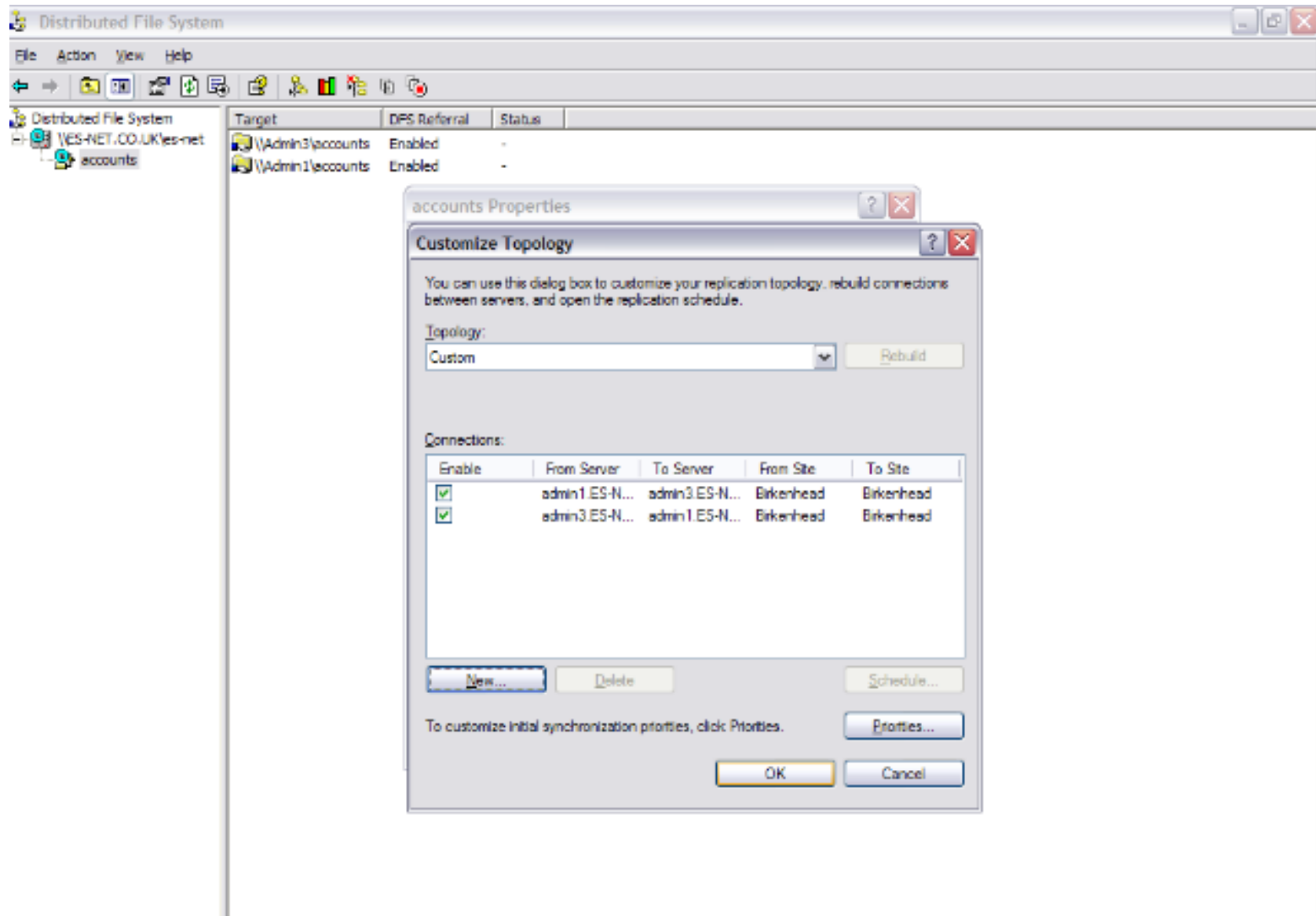












Distributed File System

File Action View Help

Distributed File System

- YES-NET.CO.UK\yes-net
 - accounts

Target	DPS Referral	Status
\\Admin3\accounts	Enabled	-
\\Admin1\accounts	Enabled	-

accounts Properties

Customize Topology

You can use this dialog box to customize your replication topology, rebuild connections between servers, and open the replication schedule.

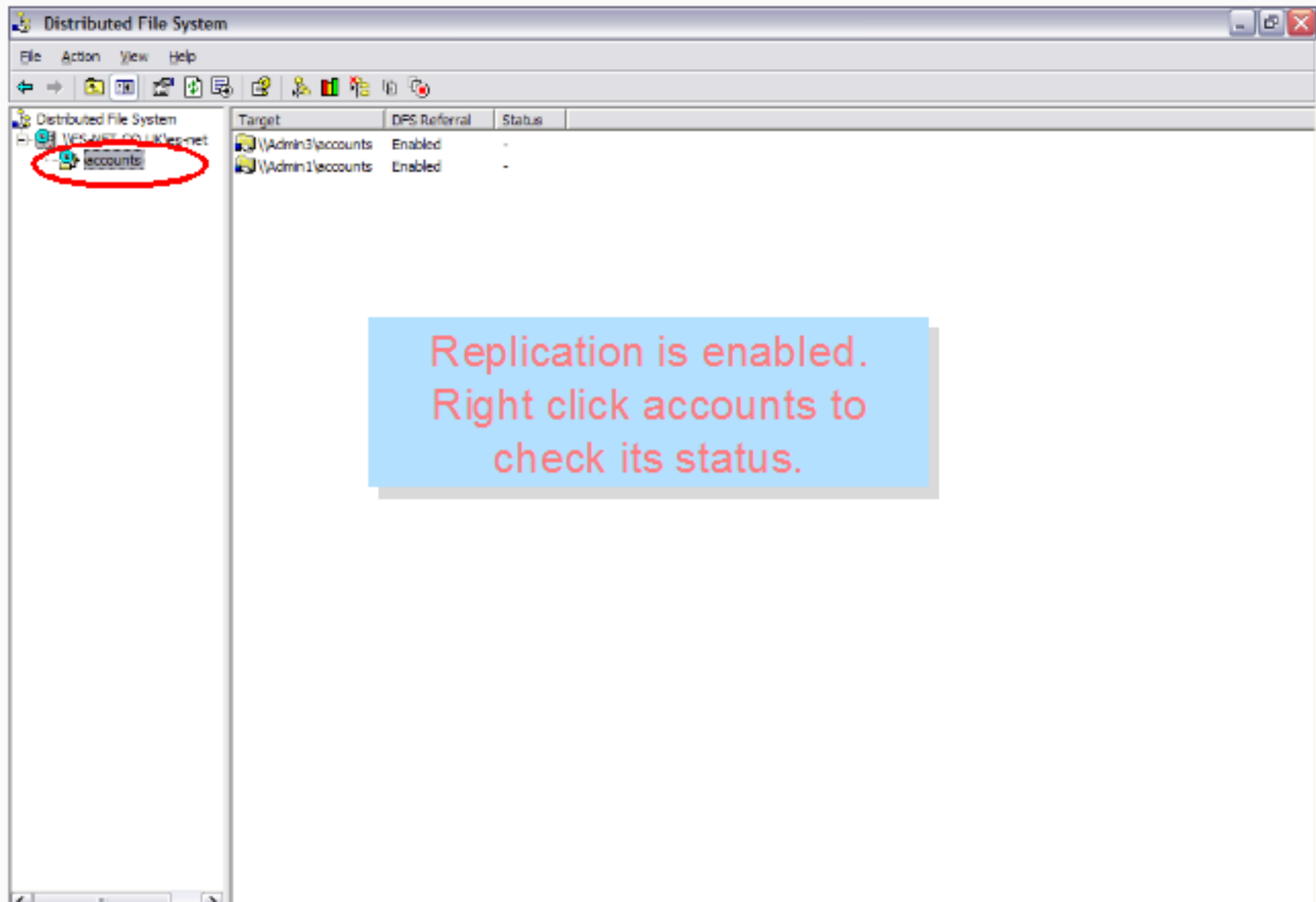
Topology:
Custom

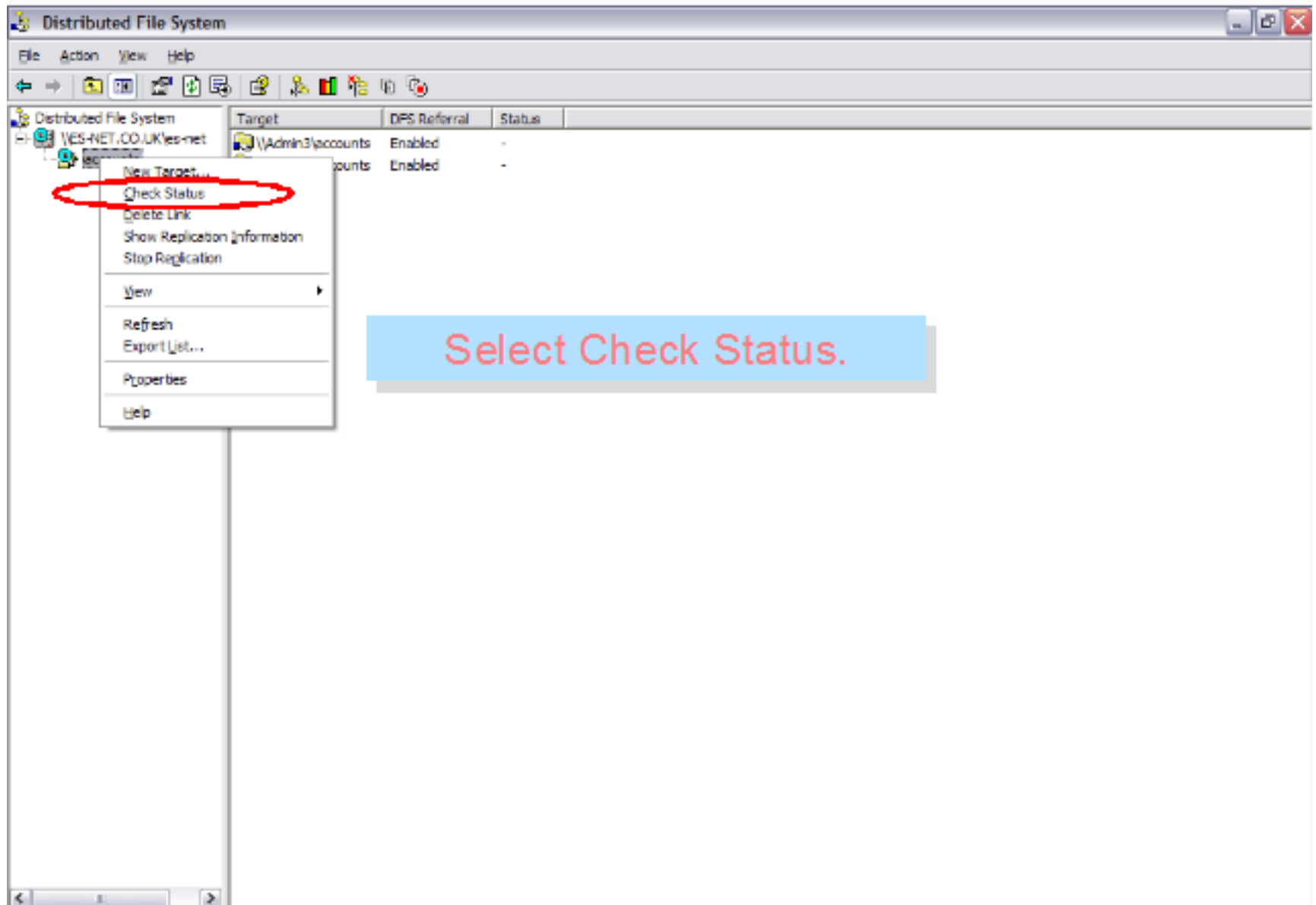
Connections:

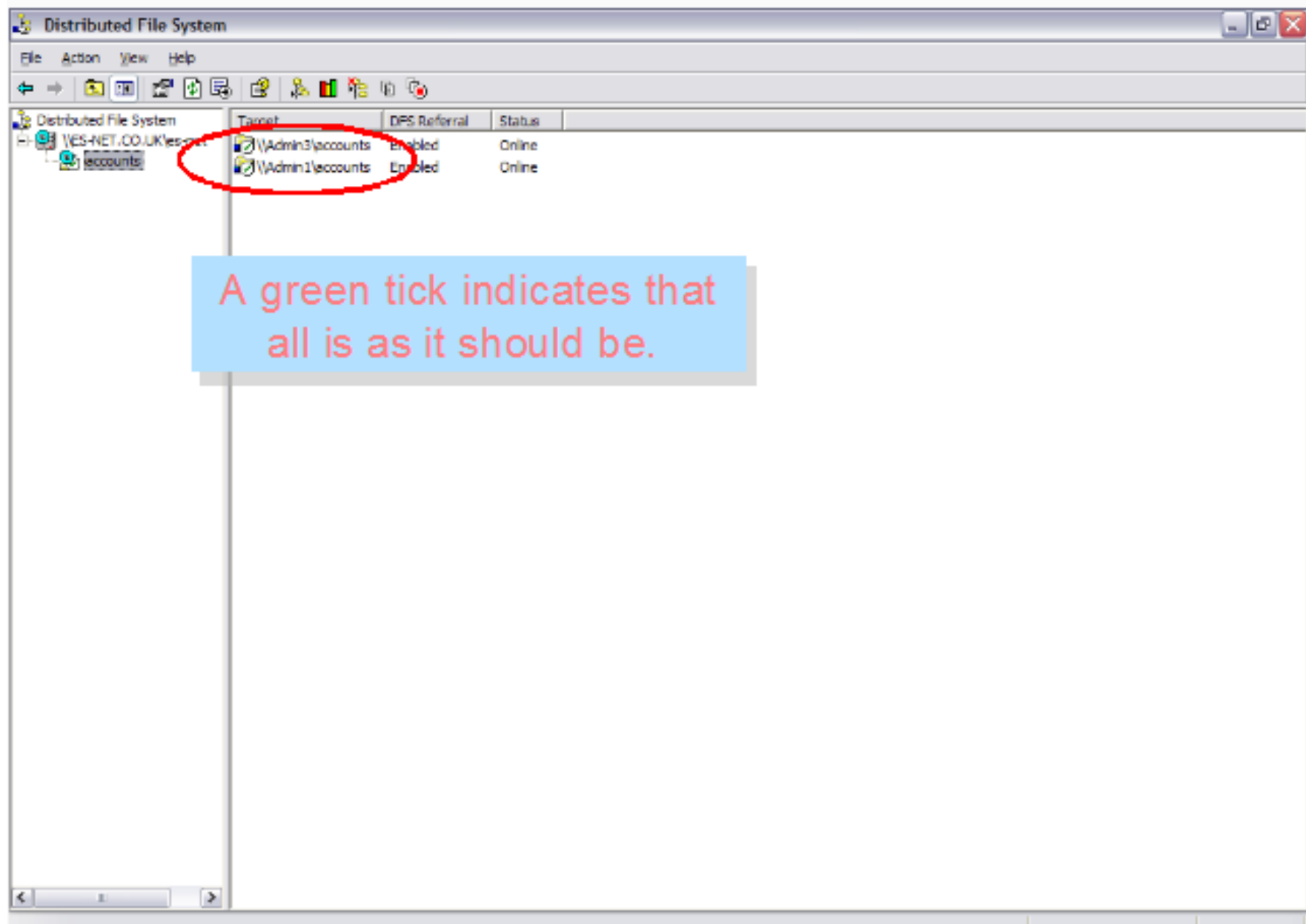
Enable	From Server	To Server	From Site	To Site
<input checked="" type="checkbox"/>	admin1.ES-N...	admin3.ES-N...	Birkenhead	Birkenhead
<input checked="" type="checkbox"/>	admin3.ES-N...	admin1.ES-N...	Birkenhead	Birkenhead

To customize initial synchronization priorities, click

When all connections are complete, click OK.







Distributed File System

File Action View Help

← → [Icons]

Distributed File System

- VES-NET.CO...
 - accounts
 - sales
 - puma

Target	DPS Referral	Status
\\Admin3\puma	Enabled	Online
\\Admin1\puma	Enabled	Online

Further links can now be added.