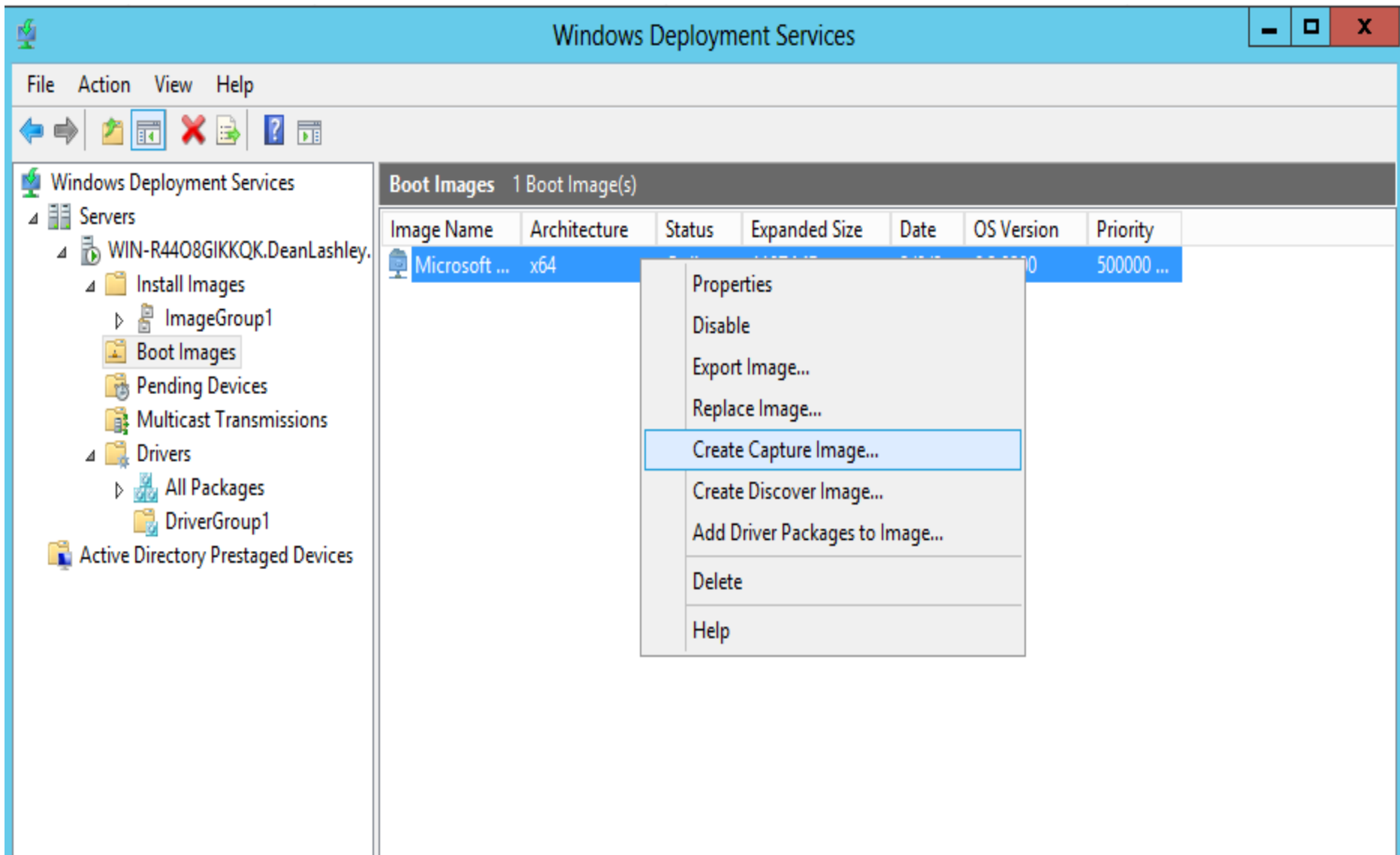


Creating a capture image
to be used to capture an image from a
reference computer

Server 2012





Create Capture Image Wizard



Metadata and Location



This wizard creates a capture image from a boot image, and saves it to the location that you specify. At the end of this wizard, you will have the option to add the image back to the server.

Enter the following information for this capture image.
(Note: You cannot use an x64-based capture image for an x86-based computer.)

Image name:

Image description:

Image architecture:

x64

Location and file name:

To create this capture image, click Next.

[More information about capture images](#)

Windows Deployment Services

File Action View Help

Windows Deployment Services

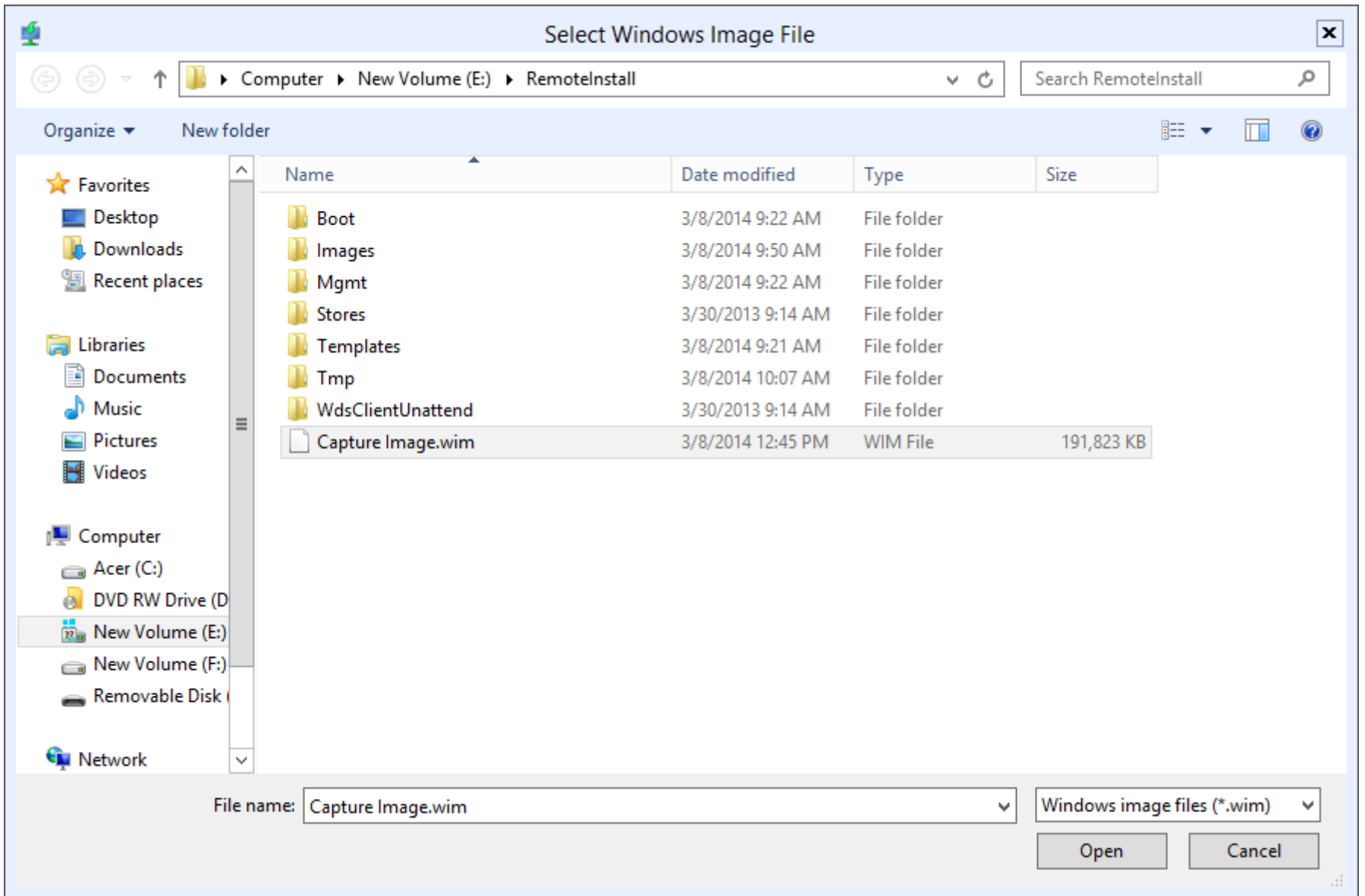
- Servers
 - WIN-R4408GIKKQK.DeanLashley.
 - Install Images
 - ImageGroup1
 - Boot Images
 - Pending Images
 - Multicast Images
 - Drivers
 - All Drivers
 - Drivers
 - Active Directory Prestaged Devices

Boot Images 1 Boot Image(s)

Image Name	Architecture	Status	Expanded Size	Date	OS Version	Priority
Microsoft ...	x64	Online	1197 MB	3/8/2...	6.2.9200	500000 ...

Context menu for Boot Images:

- Add Boot Image...
- View
- Export List...
- Help





Add Image Wizard



Image File



Enter the location of the Windows image file that contains the images to add.

File location:

Note: The default boot and install images (Boot.wim and Install.wim) are located on the installation DVD in the \Sources folder.

[More information about images and image types](#)




 **Add Image Wizard** 

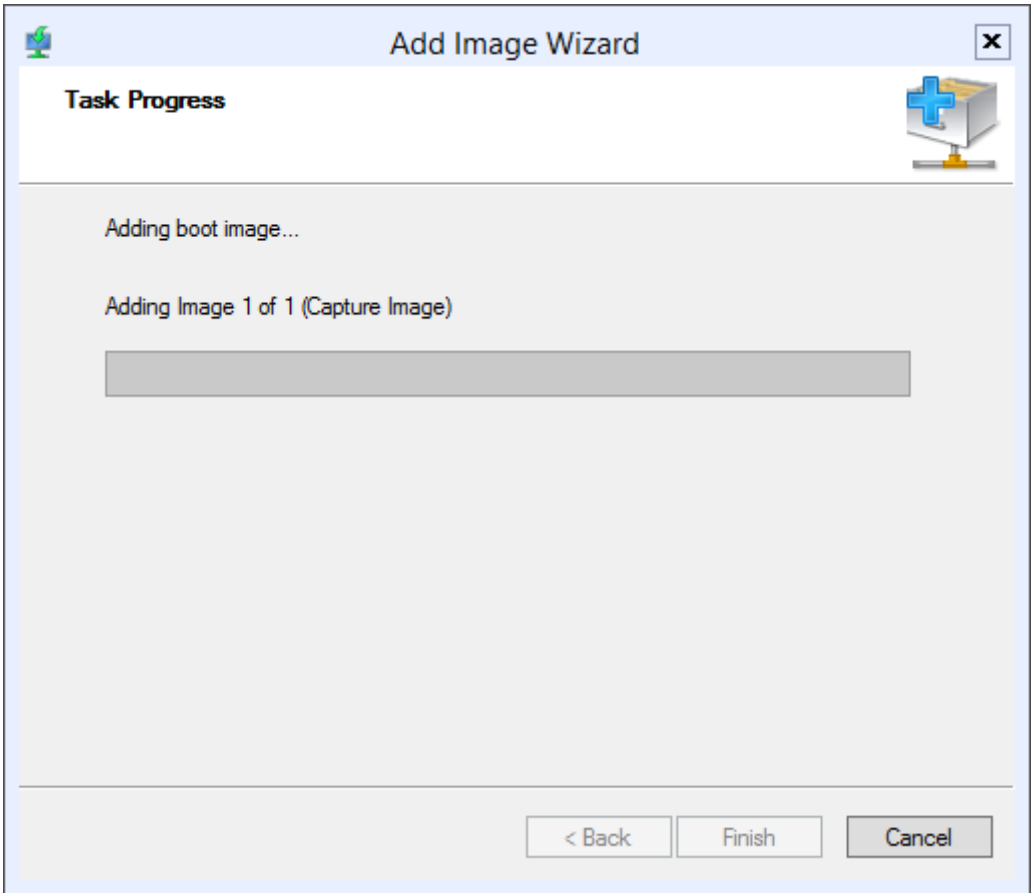
Image Metadata 



Enter a name and description for the following image:
'Capture Image'


Image name:

Image description:

Image architecture:
x64



 **Add Image Wizard** 

Summary 

You have selected the following images

Image group: Boot Images

Image file: E:\RemoteInstall\Capture Image.wim

Selected images:

Name
Capture Image

To change your selection, click Back. To add the selected images to the server, click Next.



Windows Deployment Services



File Action View Help



- Windows Deployment Services
 - Servers
 - WIN-R4408GIKKQK.DeanLashley.
 - Install Images
 - ImageGroup1
 - Boot Images**
 - Pending Devices
 - Multicast Transmissions
 - Drivers
 - All Packages
 - DriverGroup1
 - Active Directory Prestaged Devices

Boot Images 2 Boot Image(s)

Image Name	Architecture	Status	Expanded Size	Date	OS Version	Priority	
Microsoft ...	x64	Online	1197 MB	3/8/2...	6.2.9200	500000 ...	
Capture Im...	x64	Online	1197 MB	3/8/2...	6.2.9200	500000 ...	

