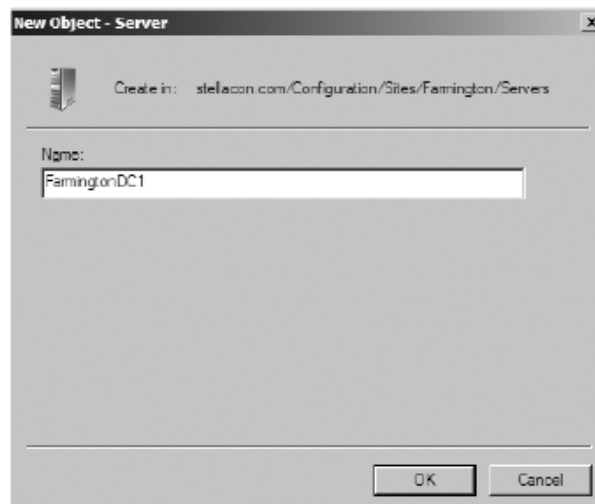


Configuring Sites

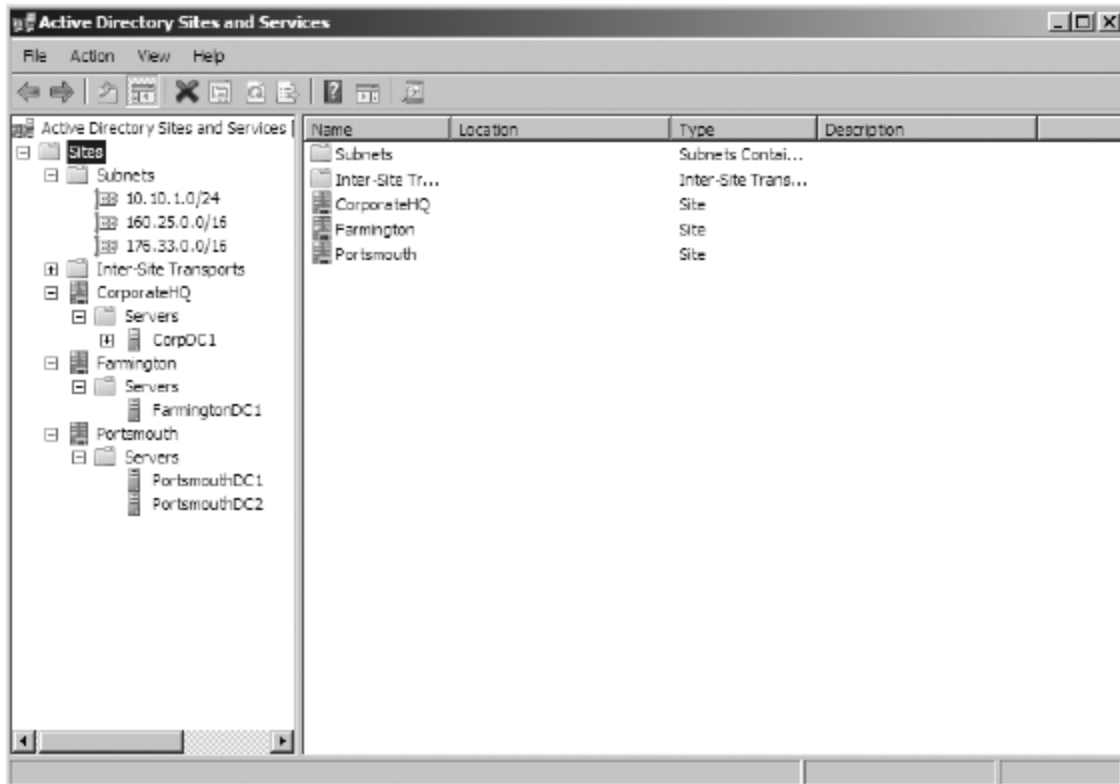
Once you have created Active Directory sites and defined which subnets they contain, it's time to make some additional configuration settings for the site structure. Specifically, you'll need to assign servers to specific sites and configure the site licensing options. By placing servers in sites, you tell Active Directory replication services how to replicate information for various types of servers.

Configuring Sites

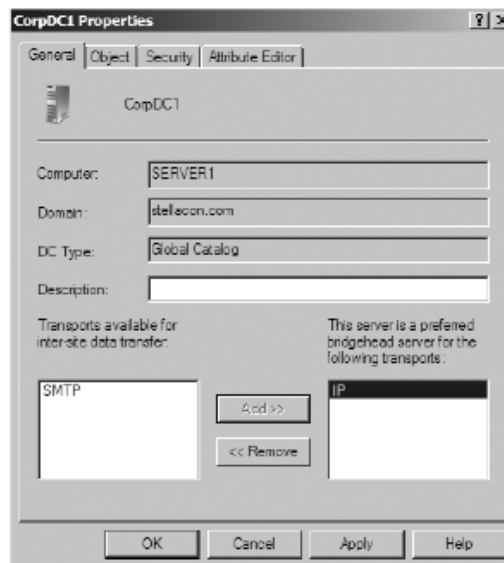
1. Open the Active Directory Sites And Services tool from the Administrative Tools program group.
2. Expand the Sites folder, and click and expand the Farmington site.
3. Right-click the Servers container in the Farmington site, and select New > Server. Type **FarmingtonDC1** for the name of the server, and then click OK.



4. Create a new Server object within the CorporateHQ site, and name it **CorpDC1**. Note that this object also includes the name of the local domain controller.
5. Create two new Server objects within the Portsmouth site, and name them **PortsmouthDC1** and **PortsmouthDC2**. The Active Directory Sites And Service tool should now look like this:



- Right-click the CorpDC1 server object and select Properties. In the General tab of the CorpDC1 Properties box, select STMP in the Transports Available For Inter-site Data Transfer box, and click Add to make this server a preferred IP bridgehead server. Click OK to accept the settings.



- When you are finished, close the Active Directory Sites And Services tool.

