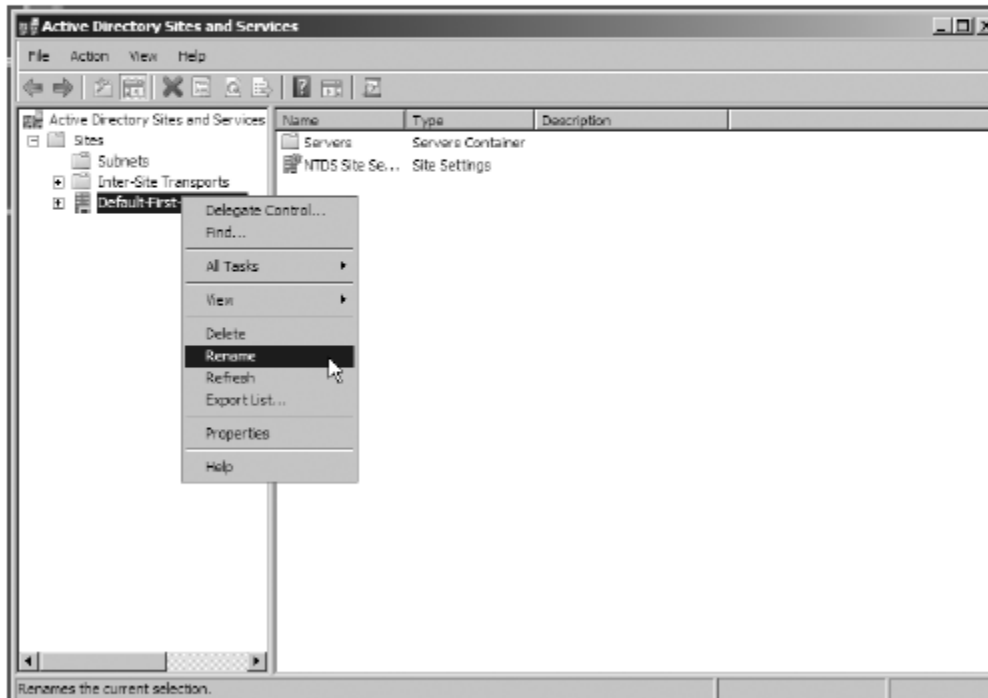


# Creating Sites and Subnets Lab

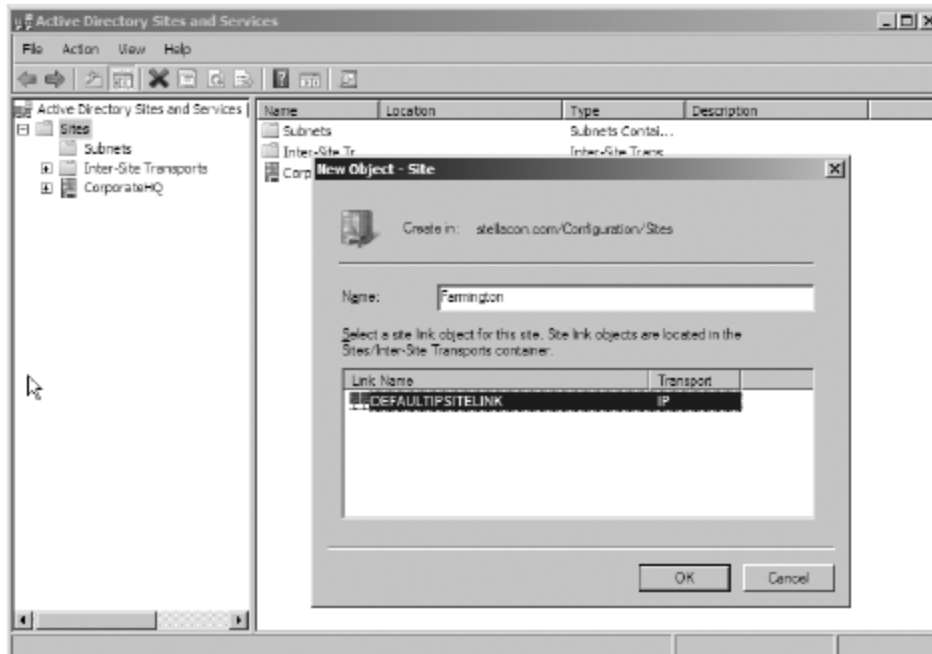
## Creating Sites

1. Open the Active Directory Sites And Services tool from the Administrative Tools program group.
2. Expand the Sites folder.
3. Right-click the Default-First-Site-Name item, and choose Rename. Rename the site to **CorporateHQ**.

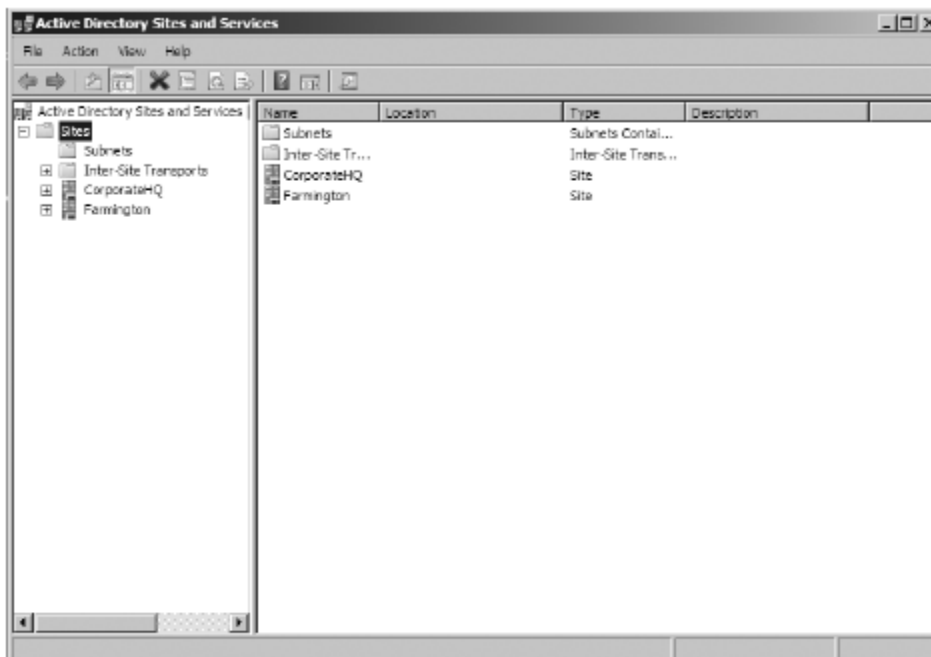


4. Create a new site by right-clicking the Sites object and selecting New Site.

5. On the New Object-Site dialog box, type **Farmington** for the site name. Click the **DEFAULTIPSITELINK** item, an information screen pops up, then click OK to create the site. Note that you cannot include spaces or other special characters in the name of a site.



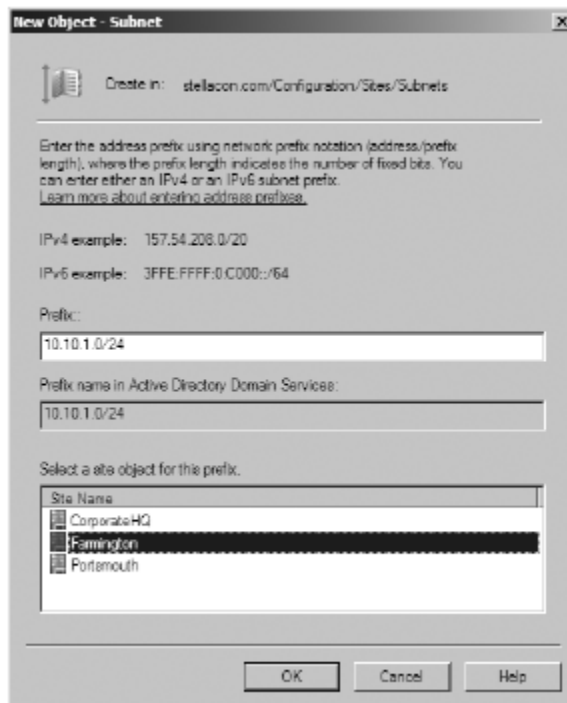
6. Notice the Farmington site is now listed under the Sites object.



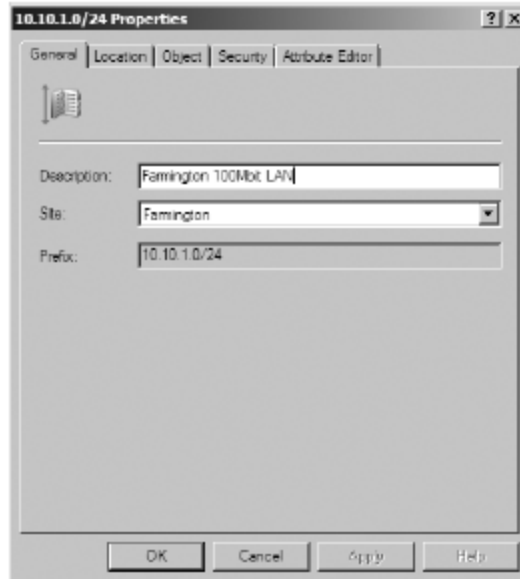
8. When you are finished, close the Active Directory Sites And Services tool.

## Creating Subnets

1. Open the Active Directory Sites And Services tool from the Administrative Tools program group.
2. Expand the Sites folder. Right-click the Subnets folder, and select New Subnet.
3. In the New Object–Subnet dialog box, you are prompted for information about the IPv4 or IPv6 details for the new subnet. For the prefix, type 10.10.1.0/24 (we are staying with the more commonly used IPv4). click OK to create the subnet.

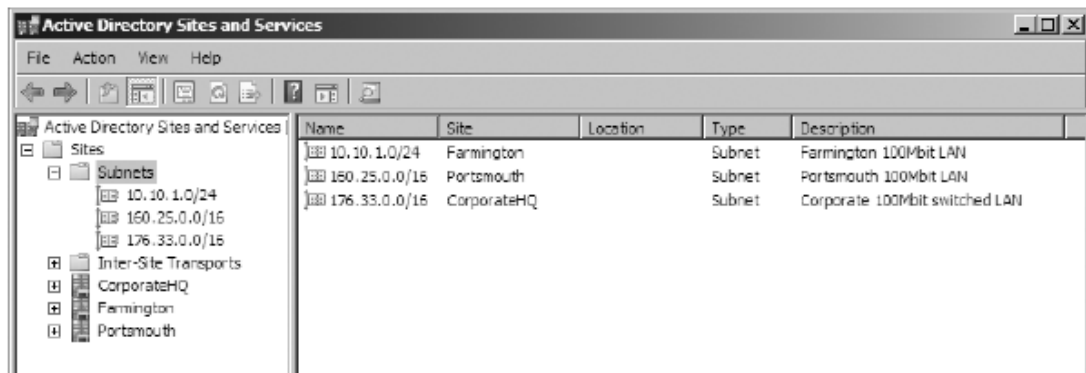


4. In the Active Directory Sites And Services tool, right-click the newly created 10.10.1.0/24 subnet object, and select Properties.
5. On the subnet's Properties dialog box, type **Farmington 100Mbit LAN** for the description. Click OK to continue.



6. Create a new subnet using the following information:  
Address: **160.25.0.0/16**  
Site: **Portsmouth**  
Description: **Portsmouth 100Mbit LAN**
7. Finally, create another subnet using the following information:  
Address: **176.33.0.0/16**  
Site: **CorporateHQ**  
Description: **Corporate 100Mbit switched LAN**

The Active Directory Sites And Services tool should now look like this:



8. When finished, close the Active Directory Sites And Services tool.