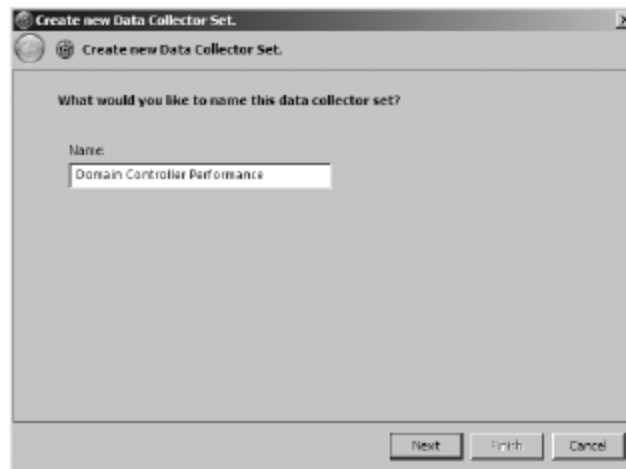
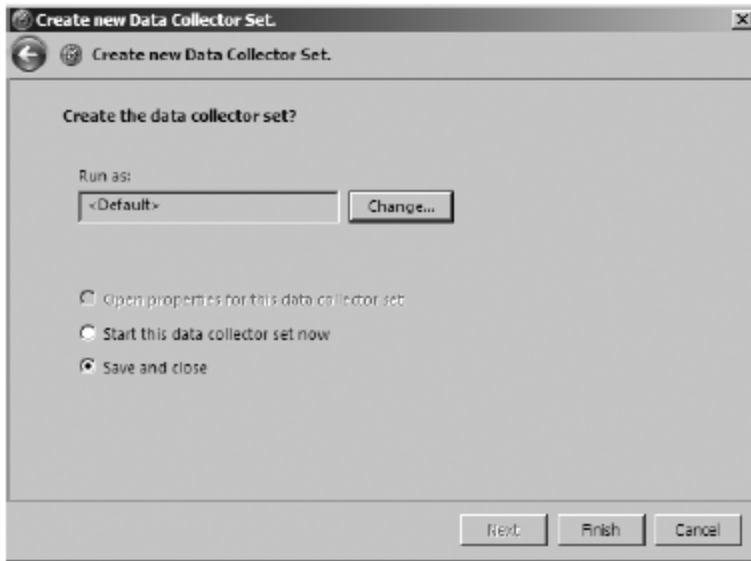


## Monitoring Domain Controller and Active Directory Performance with Windows Server 2008 Performance Monitor

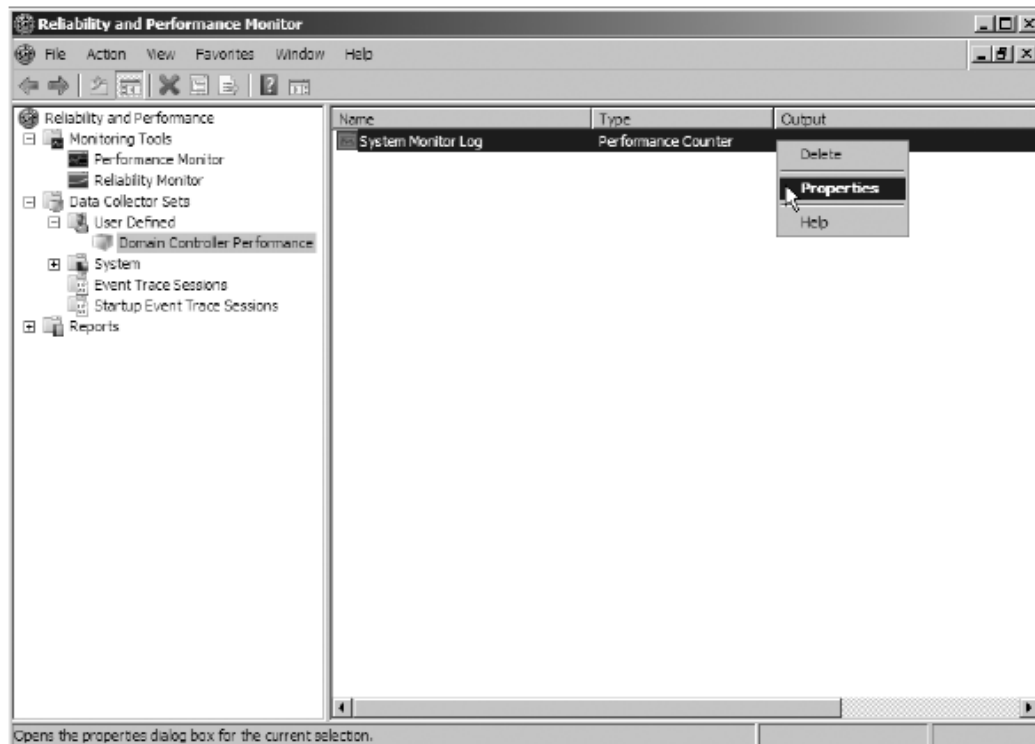
1. Open the Reliability and Performance Monitor by selecting Start > Run and entering **perfmon**.
2. In the left pane, right-click Performance Monitor and select New > Data Collector Set. In the Name box of the Create New Data Collector Set dialog box, type **Domain Controller Performance** and click Next.



3. A dialog box showing the location of the saved data appears. This is the location on the hard disk where the data will be stored. Keep the defaults and click Next.
4. In the Create New Data Collector Set dialog box, make sure the Save And Close radio button is selected and click Finish.



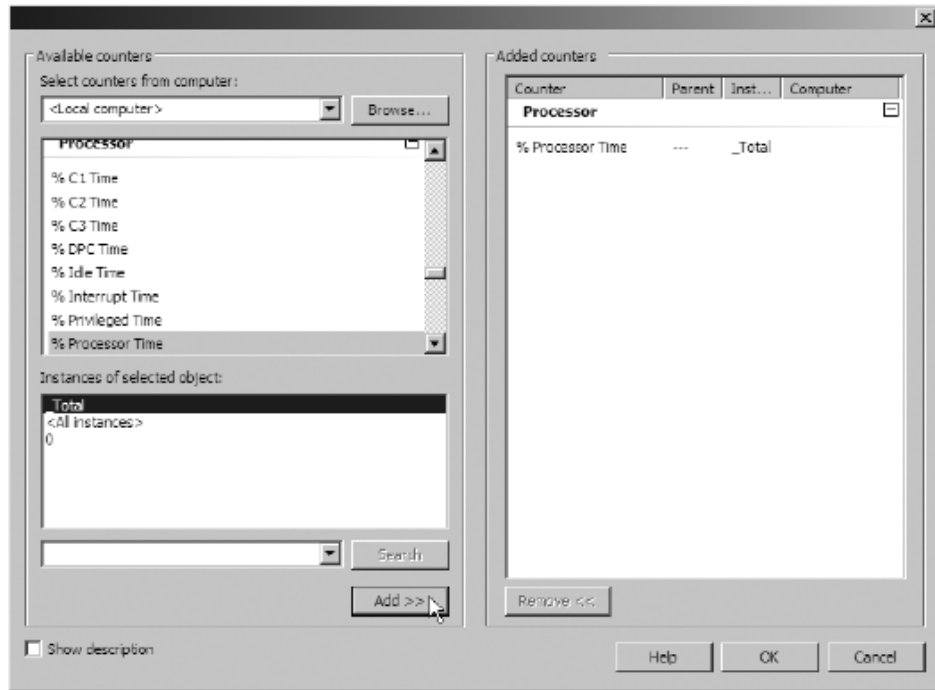
5. In the left pane of the Reliability and Performance Monitor, expand Data Collector Sets, User Defined and click the new collector set you just created (Domain Controller Performance). Right-click System Monitor Log in the right pane and choose Properties.



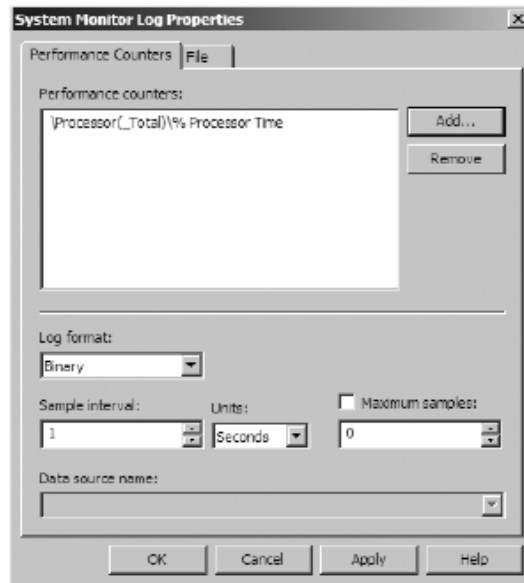
6. In the System Monitor Log Properties dialog box, click the Add button.



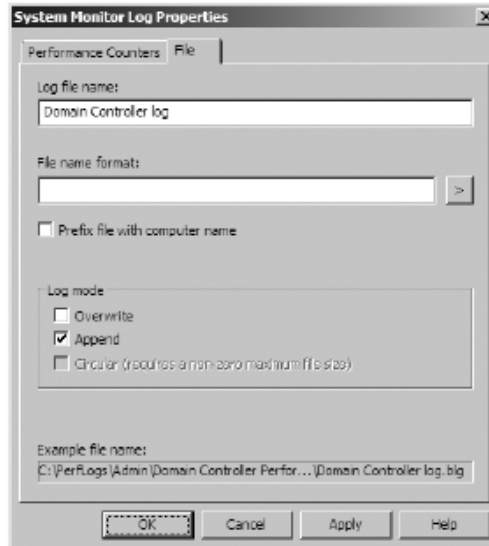
7. In the dialog box that appears, select <Local Computer> in the Select Counters From Computer drop-down list. Expand the Processor object from the Available Counters list. Select the % Processor Time counter and the \_Total instance. Note that you can click the Show Description box to find more information about the various parameters that are available. Click the Add button to add the counter to the Added Counters list.



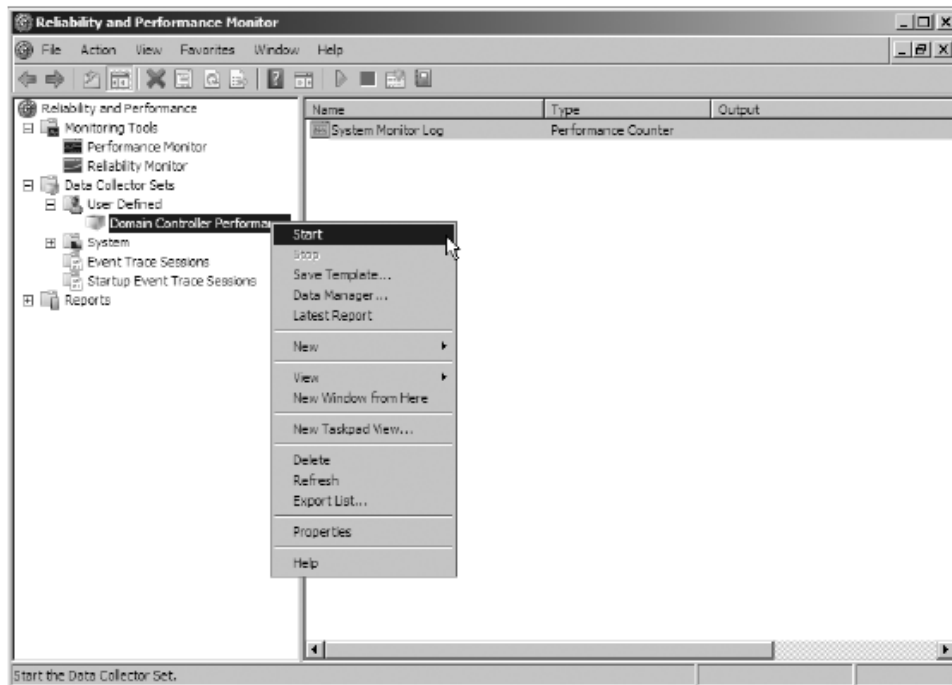
- When you are finished adding these counters, click the OK button to return to the System Monitor Log Properties dialog box and view the counters that you selected.



- Click the File tab of the System Monitor Log Properties dialog box. Change the log file name to **Domain Controller log**. Click the Append check box. Click OK.

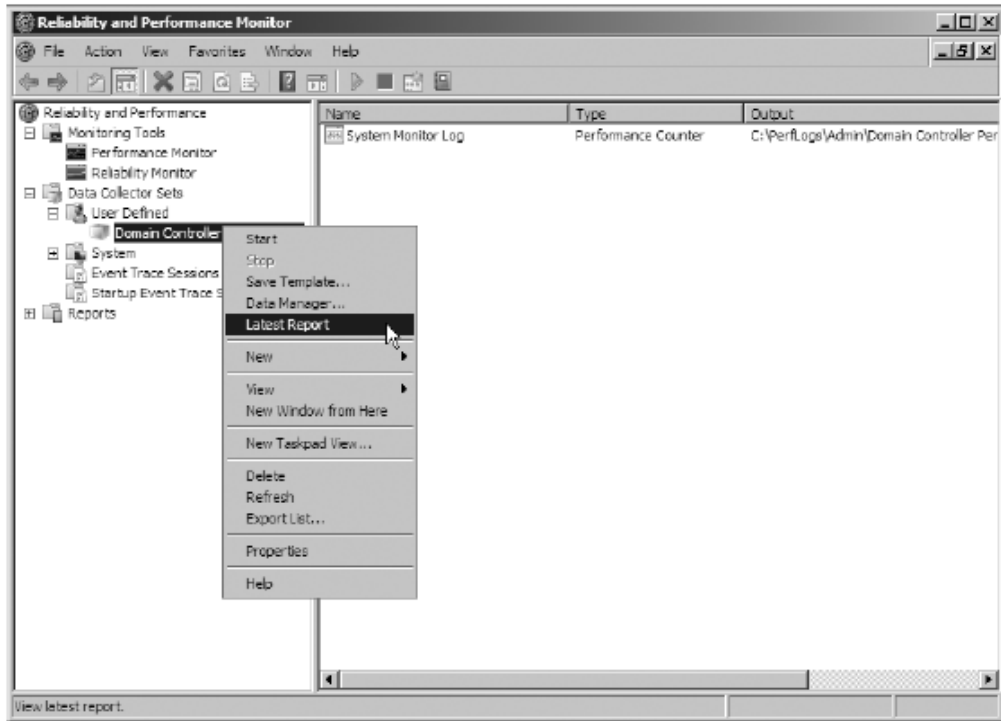


- In the left pane of the Reliability and Performance Monitor, right-click the collector set **Domain Controller Performance**. Choose Start.

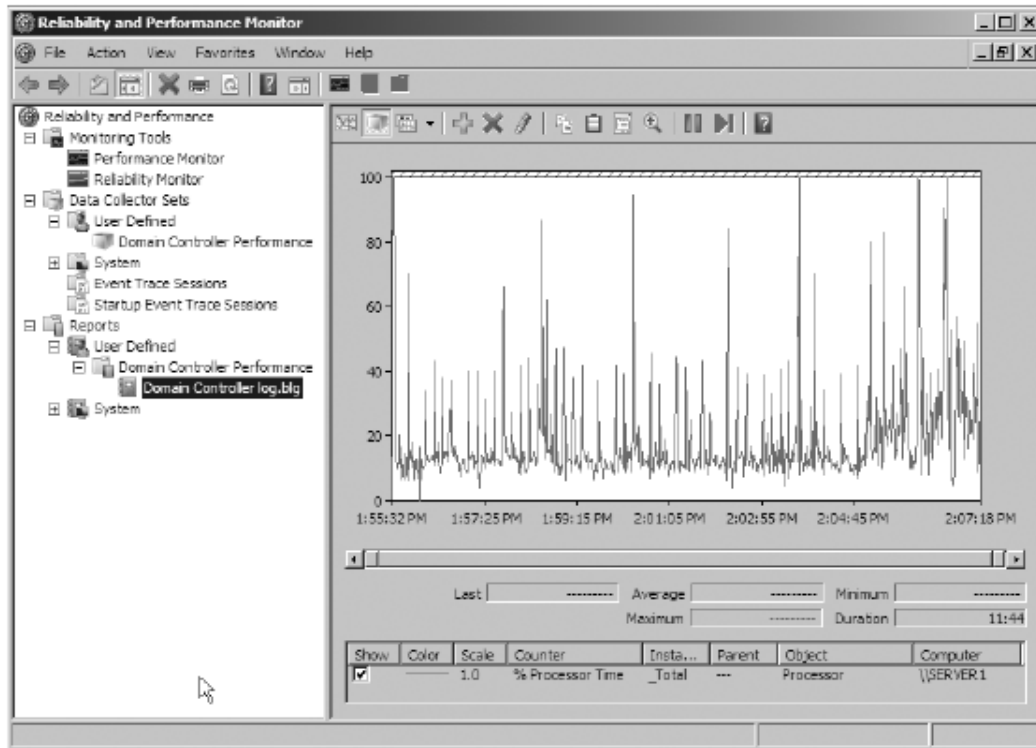


- Let the system run for five minutes. During this time, open applications or windows on the server. After five minutes, in the left pane of the Reliability and Performance Monitor, right-click the collector set **Domain Controller Performance**. Choose Stop.

12. Right-click the collector set Domain Controller Performance. Choose Latest Report.



13. View the data that was captured.



14. When you are done viewing the captured data, close the Reliability and Performance Monitor.

---