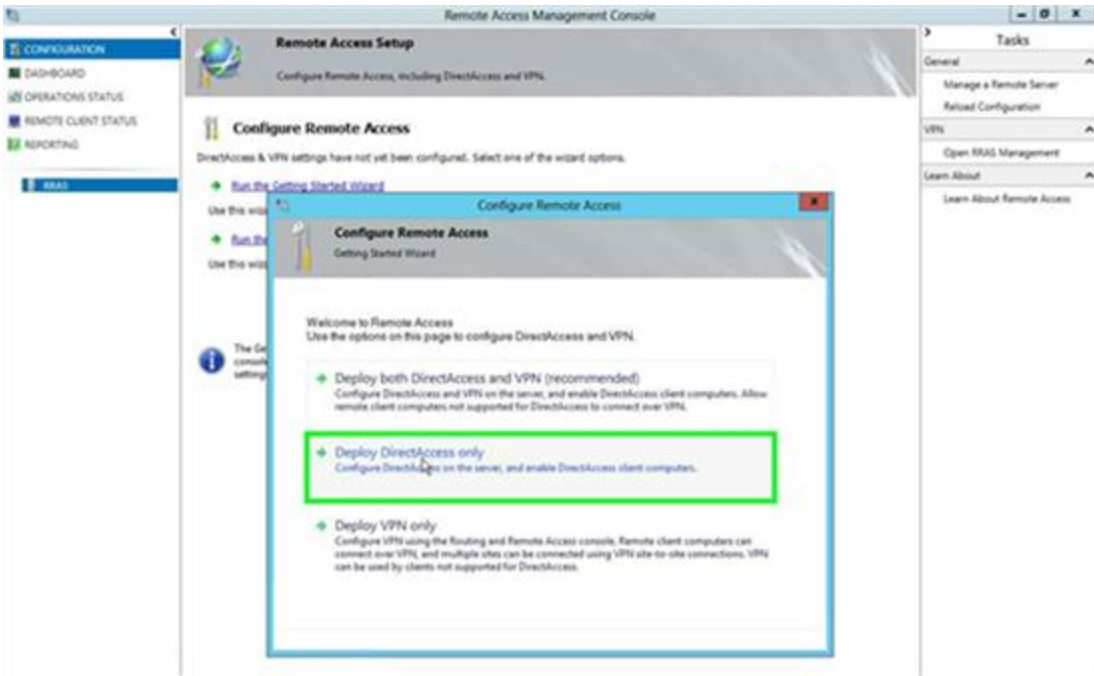


Direct Access Deployment Steps

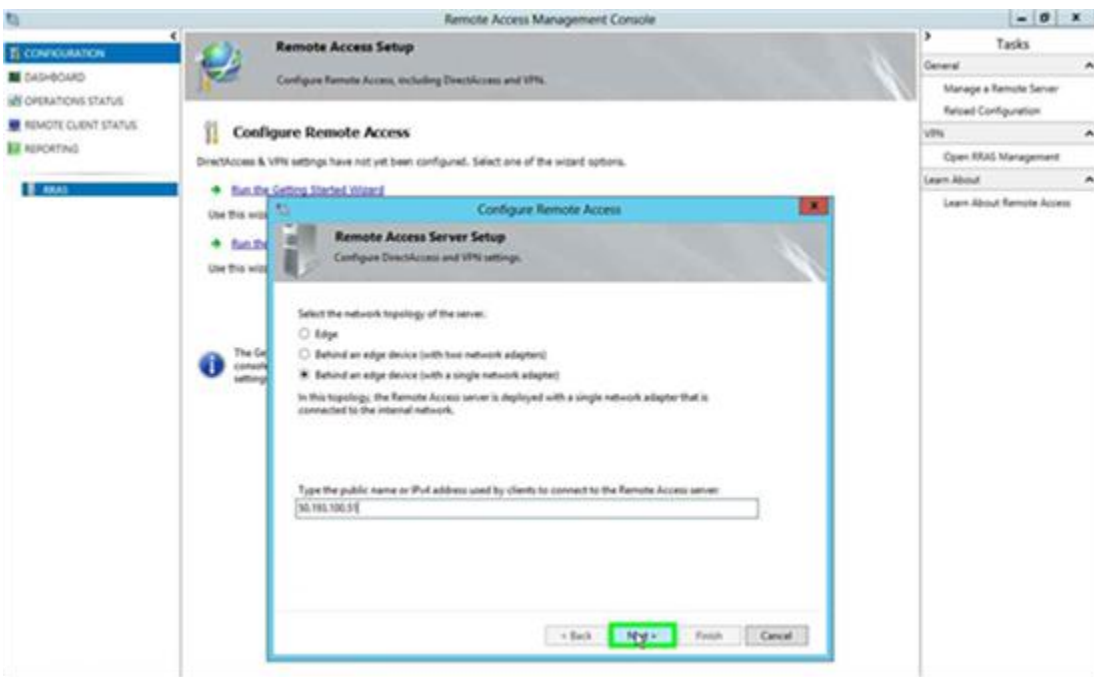
1. Install the remote access role:
 - In the Server Manager console, in the Dashboard, click add roles.
 - Click Next three times to get to the server role selection screen.
 - On the Select Server Roles dialog, select Remote Access, click Add Required Features, and then click Next.
 - On the Select features dialog, expand Remote Server Administration Tools, expand Role Administration Tools, and then select Remote Access Management Tools, and then click Next.
 - Click Next four times.
 - On the Confirm installation selections dialog, click Install.
 - On the Installation progress dialog, verify that the installation was successful, and then click Close.
2. Obtain two consecutive public IPv4 IP addresses and configure them on the external adapter of the server. These addresses must be unique.
3. Create a new DNS record for the server FQDN.
4. Obtain a server certificate for IP-HTTPS connections, with a subject name that matches the FQDN of the server.
5. Create client security groups.
6. After Installing the Remote Access Role. Open up the Remote Access Management Console



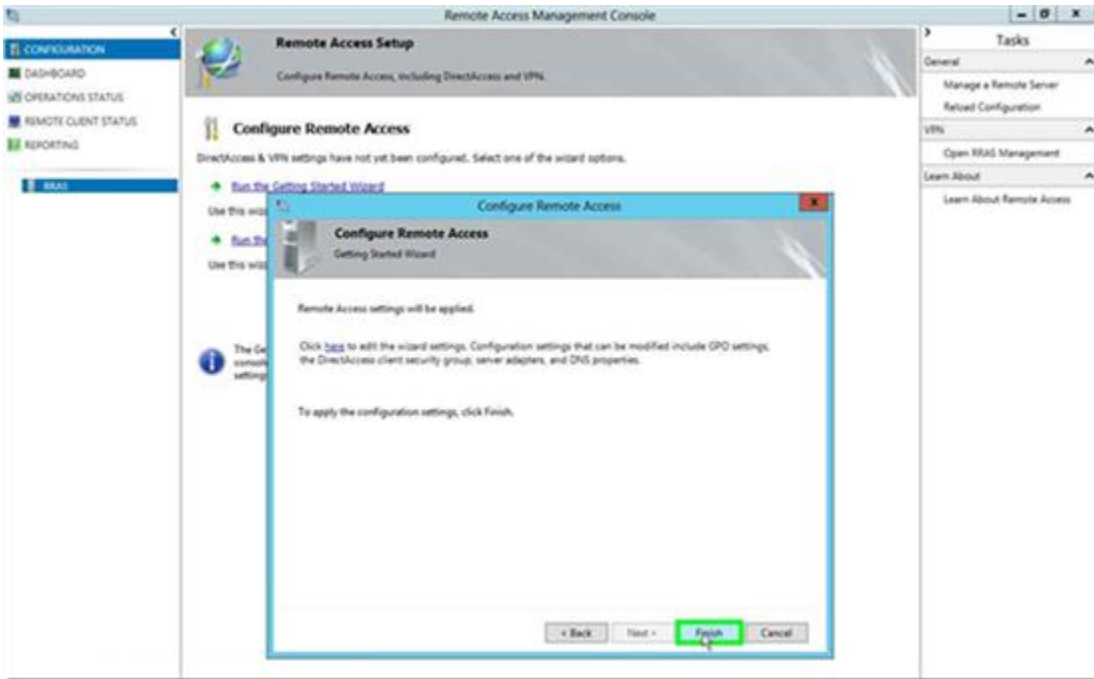
7. Click on the Deploy DirectAccess Only option



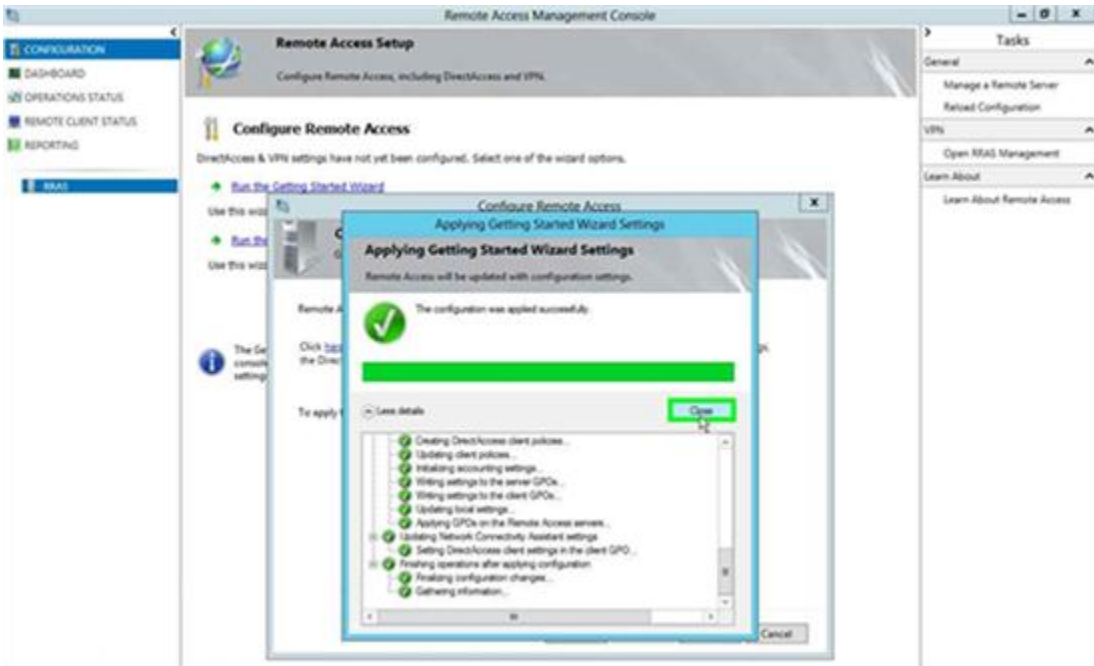
8. If two network adapters are present, select the Edge topology and enter the FQDN or External IP address, if not, select the topology that meets your requirements



9. Click Next and Finish with the default options or select to edit the settings (settings can be edited later)



10. The wizard cycles through various processes and completes the task



Once completed successfully, the ability to look through all the configuration steps and edit as needed/necessary is made available.

