

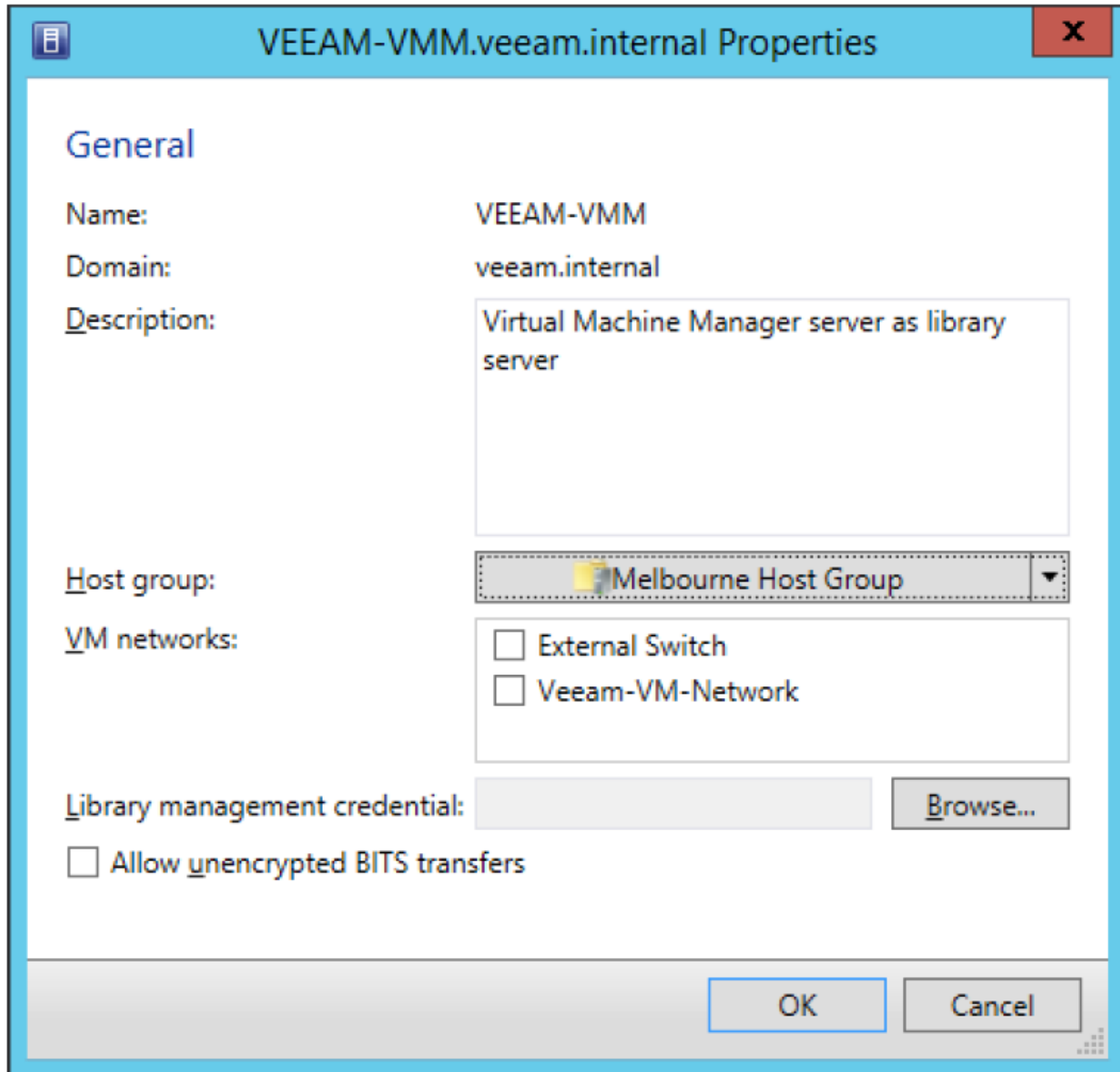
# How to Associate a VMM Library Server with a Host Group

Updated: May 13, 2016

Applies To: System Center 2012 SP1 - Virtual Machine Manager, System Center 2012 R2 Virtual Machine Manager, System Center 2012 - Virtual Machine Manager

## Host group libraries

You can associate VMM libraries with specific host groups. VMM will use this information when determining which resources to use if you have specified a resource with an equivalent object in a profile or template. For example, a virtual hard disk file marked as equivalent and hosted on shares on the Melbourne and Sydney VMM library servers is specified as a resource in a template. If you associate the Sydney VMM library server with the Sydney host group, future deployments to the Sydney host group using that template will use template resources that are equivalent stored on the Sydney VMM library server. Figure 5i shows the library server VEEAM-VMM.veeam.internal associated with the Melbourne host group.



*Figure 5i. Library server association*

You can use the following procedure to associate a library server with a host group in Virtual Machine Manager (VMM). During placement, VMM uses this association as an input to help determine which resource to use when a resource with equivalent objects is defined in a profile or template.

**Account requirements** You must be a member of the Administrator user role or a member of the Delegated Administrator user role where the management scope includes the library server that you want to configure.

### **To associate a library server with a host group**

1. Open the **Library** workspace.
2. In the **Library** pane, expand **Library Servers**, and then click a library server.
3. On the **Library Server** tab, click **Properties**.
4. In the *Library Server Name Properties* dialog box, in the **Host group** list, click the host group that you want to associate the library server with, and then click **OK**.

For example, associate the **VMMServer01.contoso.com** library server (located in Seattle) with the **Seattle** host group. Associate the **NYLibrary01.contoso.com** library server with the **New York** host group.

 **Note**

You can associate a library server with only one host group. However, child host groups are automatically associated with the library server of the parent host group. Also, realize that you can associate more than one library server with a host group.