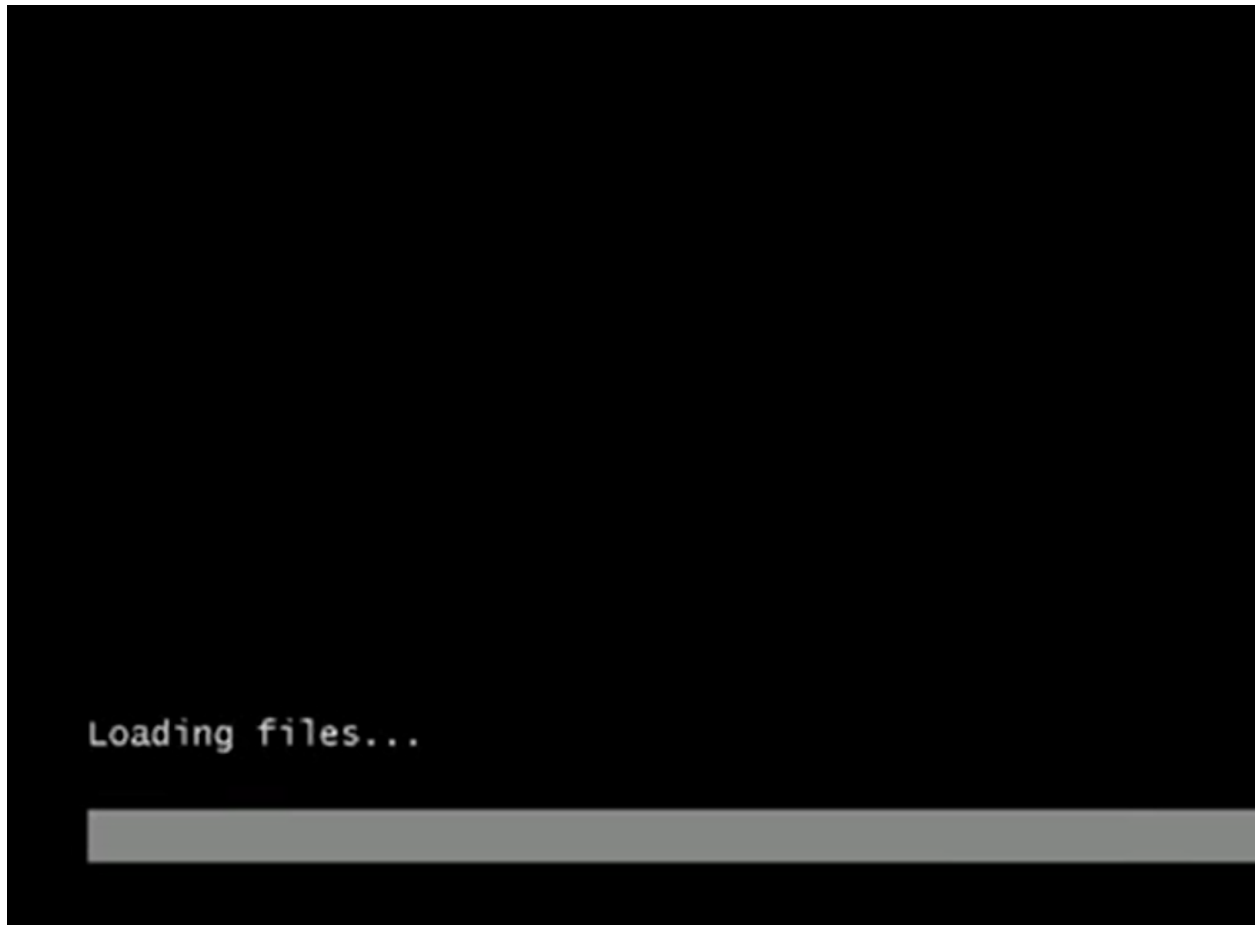
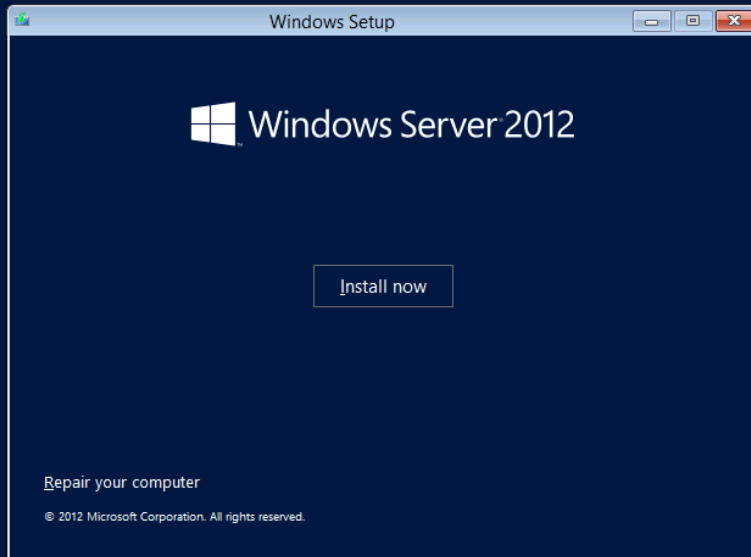


Installing Windows Server 2012 with the GUI

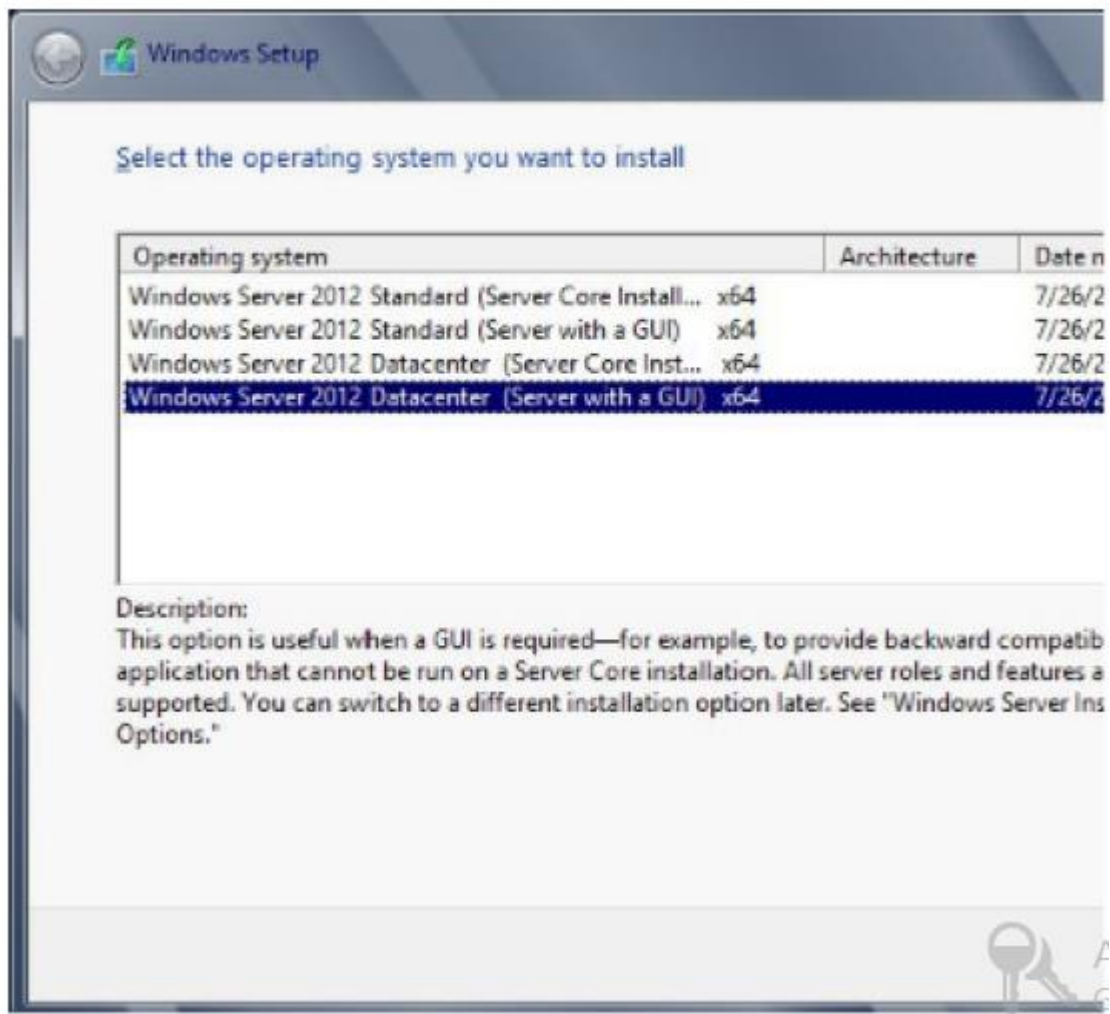
1. Insert the Windows Server 2012 installation DVD, and restart machine from the installation media.
2. At the first screen, Windows Server 2012 will ask you to configure your language, time and currency, and keyboard. Make your selections, and click Next.
3. At the next screen, click Install Now.
4. The Select The Operating System That You

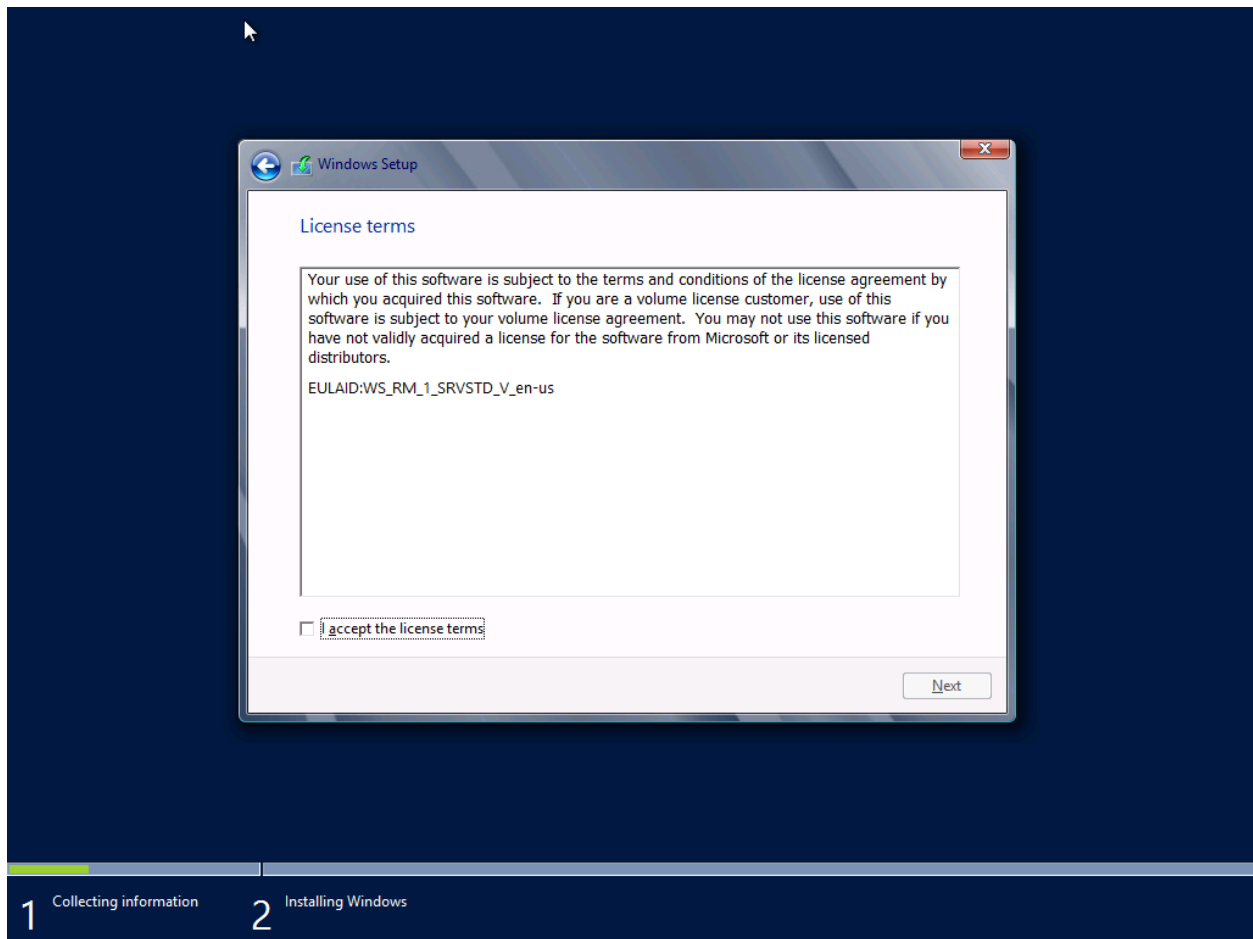






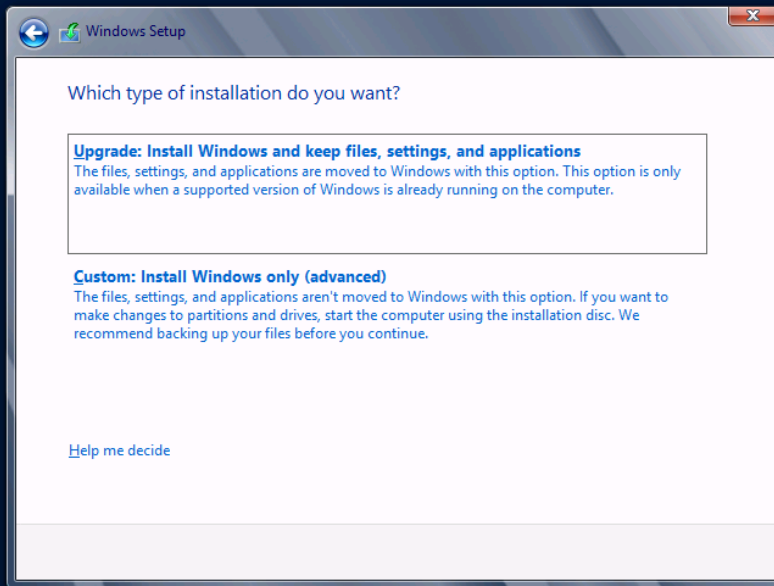
Want To Install screen then appears. Choose the Windows Server 2012 Datacenter (Server With A GUI) selection and click Next.





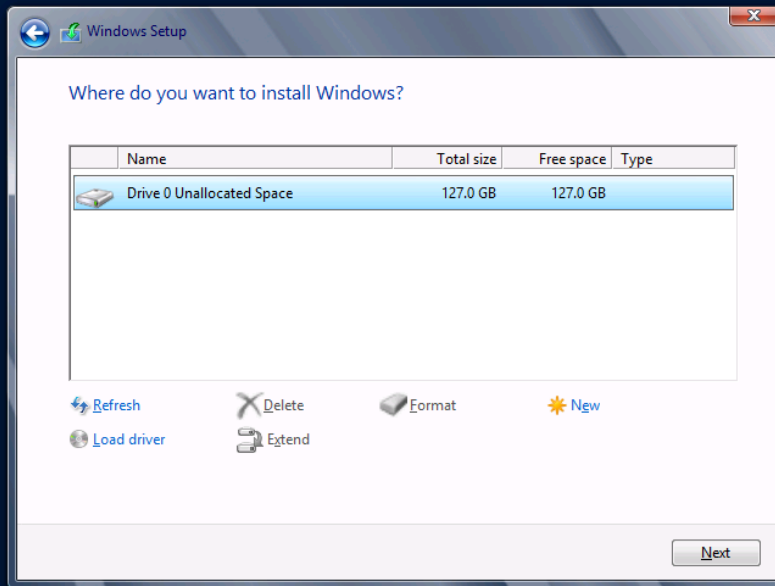
5. The license terms screen appears. After reading the Windows Server 2012 license agreement, check the I Accept The License Terms check box and click Next.

6. On the Which Type Of Installation Do You Want? screen, choose Custom: Install Windows



1 Collecting information

2 Installing Windows



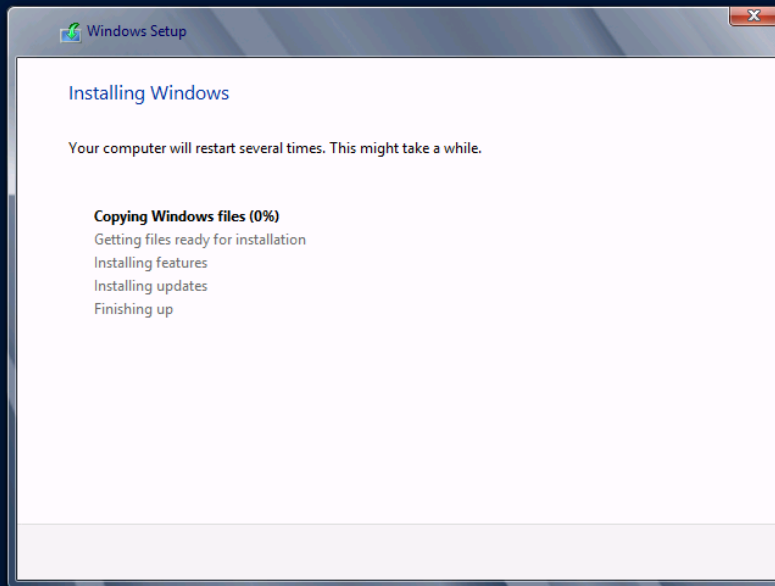
1 Collecting information

2 Installing Windows

Only (Advanced).

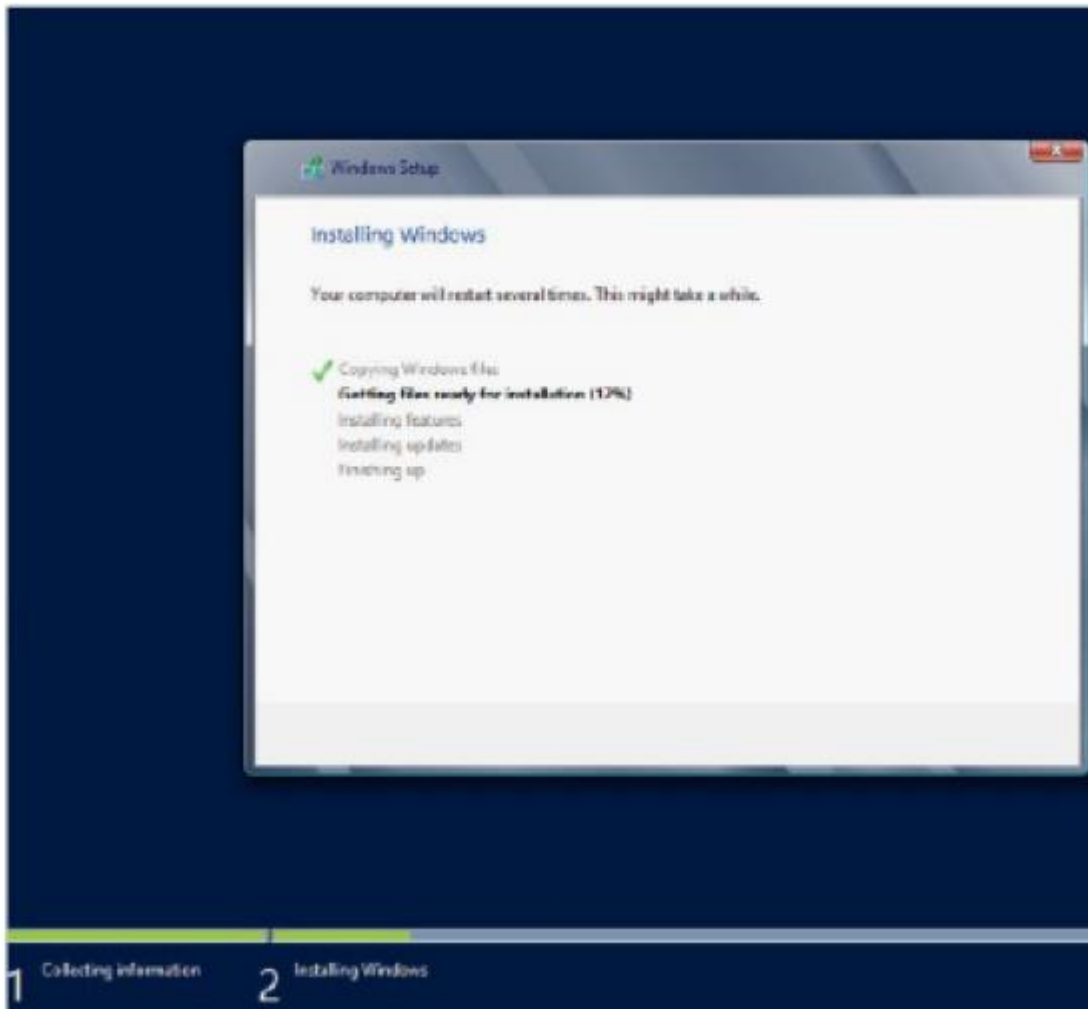
7. The next screen will ask you where you want to install Windows. If your hard disk is already formatted as NTFS, click on the drive and then click Next. If the hard disk is not yet set up or formatted, choose the New link and create a partition. After creating the partition, click the Format link. Once the format is done, make sure you choose the new partition and click Next.

8. The Installing Windows screen will appear next. This is where the files from your media will be installed onto the system. The machine will reboot during this installation.



1 Collecting information

2 Installing Windows



9. After the machine is finished rebooting, a screen requesting the administrator password will appear. Type in your password. (**P@ssword** is used in this exercise.) Your password must meet the password complexity requirements (one capitalized letter, one number, and/or one special character). Click Finished.

10. Next, log into the system. Press Ctrl+Alt+Del, and type in the administrator

password. The machine will set up the properties of the administrator account.

11. Notice that the Server Manager dashboard automatically appears. Your Windows Server 2012 installation is now complete.

12. Close Server Manager.




Settings

Type a password for the built-in administrator account that you can use to sign in to this computer.

User name

Password

Reenter password



· Finalizing your settings



Press Ctrl+Alt+Delete to sign in.

7:59

Tuesday, February 19

