

Services

This topic covers the following points:

1. What are services?
2. The Services snap-in
3. Accessing service information
4. Troubleshooting service problems

What are services?

A service is a program or a process that performs a specific function within the Windows 2003 operating system (OS). Services provide the core OS features such as web serving, file serving, help and support, printing, and error reporting.

By default with Windows Server 2003, only the key services that are required to support common server roles are enabled.

However, if other server roles such as the domain name system (DNS) are added to a server, the corresponding DNS Server service will also be added.

The Services console – which you install as the Windows Server 2003 Services snap-in – allows you to manage all services installed on a Windows 2003 Server computer.

It allows you to manage services on local computers or – using Windows NT4.0, Windows 2000, Windows XP, and Windows Server 2003 – on remote computers.

You can access the Services console from the desktop.



Select **Start - Administrative Tools - Services**.

The Services console lists and displays information about each service currently installed for the computer.

The Services console lists information about each service in five columns.

Name	Description	Status	Startup Type	Log On As
Alert	Notifies sele...	Disabled	Manual	Local Servi...
Application Layer Ga...	Provides su...	Manual	Manual	Local Servi...
Application Manage...	Processes i...	Manual	Manual	Local System
ASP.NET State Serv...	Provides su...	Manual	Manual	Network S...
Automatic Updates	Enables the...	Automatic	Automatic	Local System
Background Intellige...	Transfers d...	Started	Manual	Local System
Certificate Services	Creates, ma...	Started	Automatic	Local System
ClipBook	Enables Cli...	Disabled	Disabled	Local System
COM+ Event System	Supports Sy...	Started	Automatic	Local System
COM+ System Applic...	Manages th...	Manual	Manual	Local System

Name

The Name column displays the names of the services installed on a Windows 2003 computer. Examples of commonly installed services include the Dynamic Host Control Protocol (DHCP), domain name system (DNS), and error reporting services.

Description

The Description column displays a general description of each installed service. For example, the DHCP Client service is described as a service that registers and caches IP addresses and domain name system (DNS) names for the computer.

Status

The Status column tells you whether a service has started.

Startup type

The Startup Type column displays the current startup configuration for each service. A service can be configured to start automatically when the OS starts, to require manual startup, or the service may be disabled.

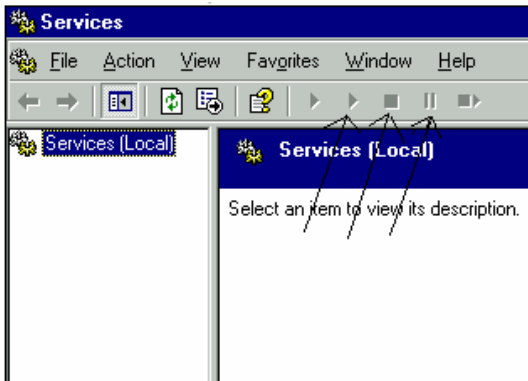
Log on As

The Log On As column displays the Log On status of each service. Each service is configured to start as a local service, a local system, or a network service. For example, the DHCP Client Service is configured as a network service, whereas the Computer Browser service is currently configured as a local system service.

Services

Buttons on the Standard toolbar of the Services console allow you to

- start a service that isn't configured to start automatically when you log on
- stop a service – to troubleshoot a service problem, for example – or pause it to stop it temporarily only
- pause a service



Suppose that you are a Windows Server 2003 network administrator, and the help desk in your organization has received calls that the database server is unavailable.

The database server was taken offline earlier for scheduled maintenance and you configured a net send message to alert all users 15 minutes prior to the server being shut down. However, users didn't receive the message.

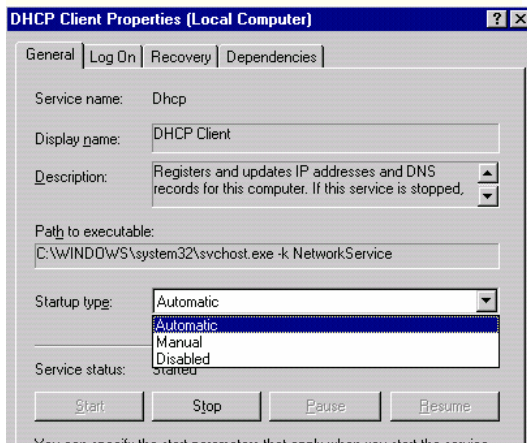
In the Services console, the entry in the Status column – Disabled – confirms that the Messenger service is disabled.

Logical Disk Manag...	Configures ...	Manual	Local System
Messenger	Transmits n...	Disabled	Local System
Microsoft Exchange ...	Monitors fol...	Manual	Local System

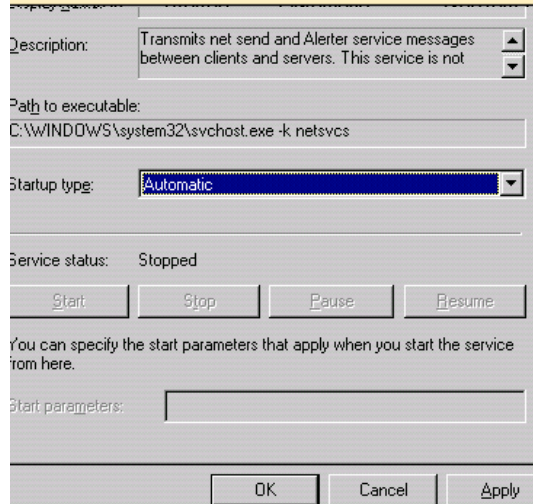
To prevent a similar event from occurring in future, you decide to configure the Messenger service to start automatically when the OS starts. To do this, you first double-click the service in the Services console to access its properties.

The Services console allows you to change the startup type for a selected service. You can configure a service to start automatically when the OS starts, to require manual starting, or to load as a disabled service.

To disable a service, for example, you access its Properties dialog box and select the appropriate option from the Startup type drop-down list on the General tabbed page.



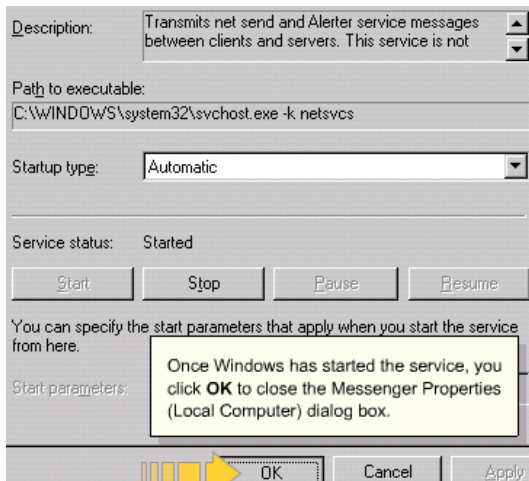
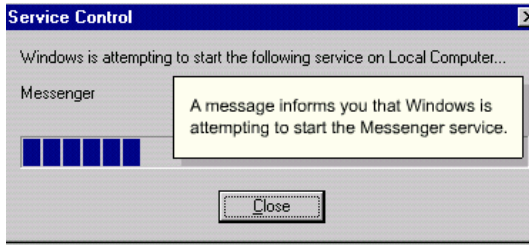
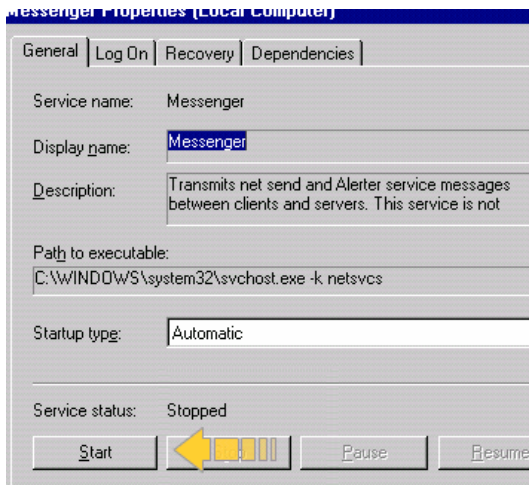
Select **Automatic** from the Startup type drop-down list and click the **Apply** button.



Services

Now that you've applied the new setting, you choose to start the service immediately.

Click the **Start** button.



Service Name	Description	Status	Startup Type
Internet Connection ...	Provides ne...	Disabled	Automatic
Logical Disk Manager	Detects an...	Started	Automatic
Logical Disk Manag...	Configures ...	Started	Manual
Messenger	Transmits n...	Started	Automatic
Microsoft Exchange ...	Monitors fol...	Manual	Manual

The Startup Type column of the Services console now displays Automatic as the startup type for the Messenger service.

Question

What does the Windows Server 2003 Services console allow you to do?

1. Disable services
2. Install services
3. Stop, pause, or restart services
4. View information about each installed service

The Services console displays information about each installed service. It also allows you to stop, pause, or restart services, and to disable services.

SkillCheck

You want to view the status of the services on a server.

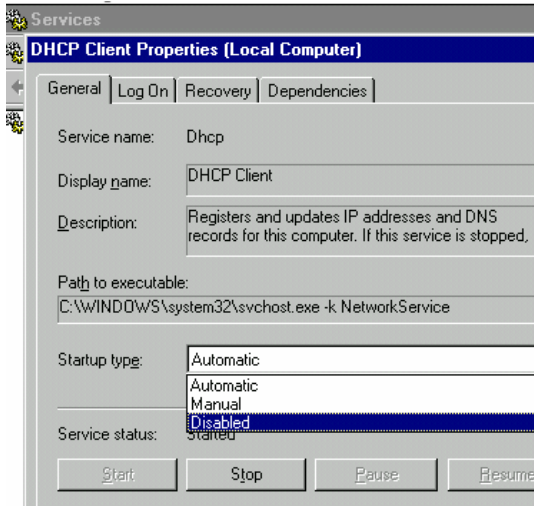
You select **Start - Administrative Tools - Services** to open the Services console, which displays information about the status of all installed services.

From the Services console, you can access detailed information about a service by accessing its properties.

Double-click the **DHCP Client** service to open its Properties dialog box.

Services

COM+ Event System	Supports Sy...	Started
COM+ System Applic...	Manages th...	
Computer Browser	Maintains a...	
Cryptographic Servic...	Provides thr...	Started
DHCP Client	Registers a...	Started
DHCP Server	Performs T...	Started
Distributed File System	Interates d	



The General tabbed page displays the service name, its display name, and its description. It also displays the path to the executable file for the service.

The General tabbed page enables you to specify the following startup types for a service:

- Automatic
- Manual
- Disabled

Automatic

The **Automatic** option allows the service to start automatically with the Windows operating system. This option is selected by default in the Startup type drop-down list box.

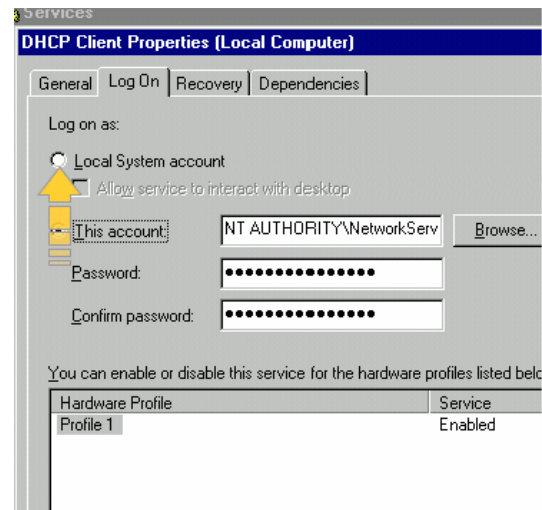
Manual

The **Manual** option instructs the operating system to start with the OS in Stopped mode. It is then necessary for an administrator to start the service manually.

Disabled

The **Disabled** option indicates that a service is disabled, which prevents an administrator from starting it manually. In this case, an administrator must change the startup type to re-enable the service.

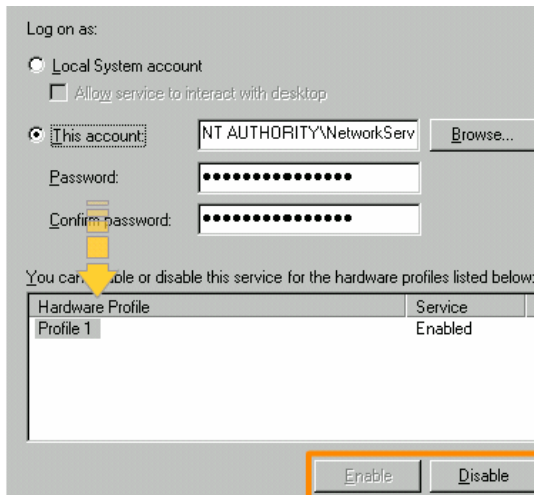
The Log On tabbed page for a service provides details of the credentials that the service uses when interacting with other resources.



The majority of the core Windows Server services log on with the local system account. However, some services may need to log on using other credentials, which you can specify once you select the **This account** radio button.

You can also enable or disable the service for specific hardware profiles.

Services



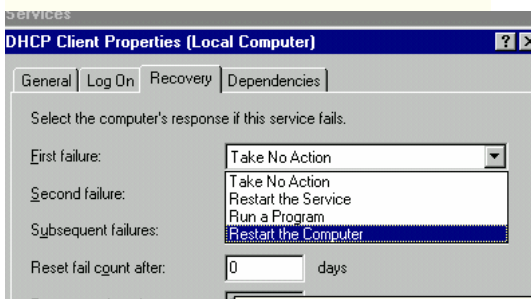
Using the **Take No Action** option, you specify that the operating system should not attempt any automatic recovery of a failed service.

In this case, you need to detect that a service has failed and to perform recovery tasks manually.

You use the **Restart the Service** option to instruct the operating system to attempt restarting a failed service.

You can then specify the time delay (in minutes) before the operating system tries to restart the service.

You use the Recovery tabbed page to set actions for the operating system to take if the selected service fails to start. You can specify different actions – or choose not to specify an action – for the first, second, and subsequent failures.



The **Run a Program** option specifies that the operating system runs a specific program if a service fails.

In the Run program section of the tabbed page, you can then specify the path to a program that you wish to run.

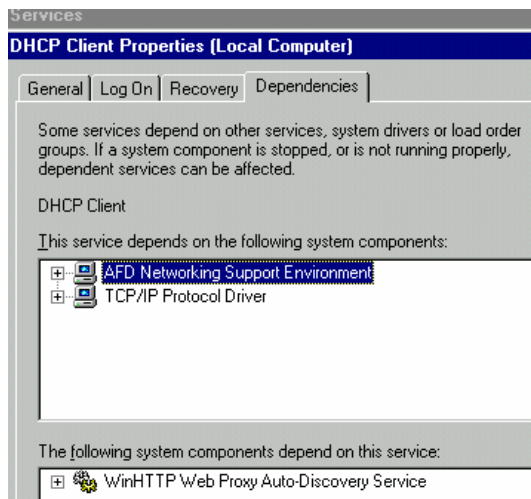
You select the **Restart the Computer** option to instruct the operating system to reboot the computer if a service fails.

The actions that you can set on the Recovery tabbed page for a service that fails include

- Take No Action
- Restart the Service
- Run a Program
- Restart the Computer

The Dependencies tabbed page provides a list of services on which the selected service depends. The services in this list must be started and running for the selected service to function.

Services

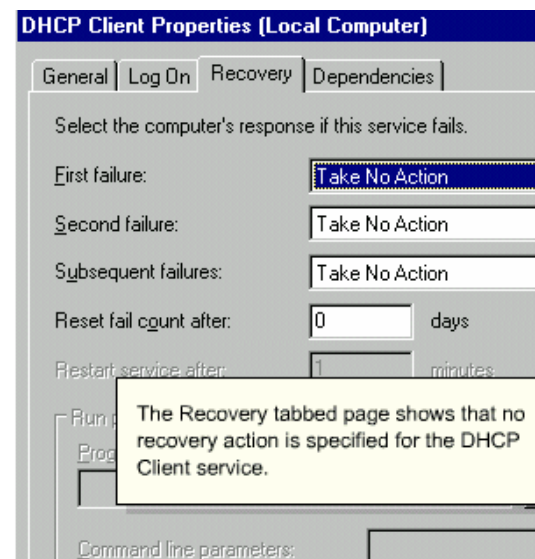
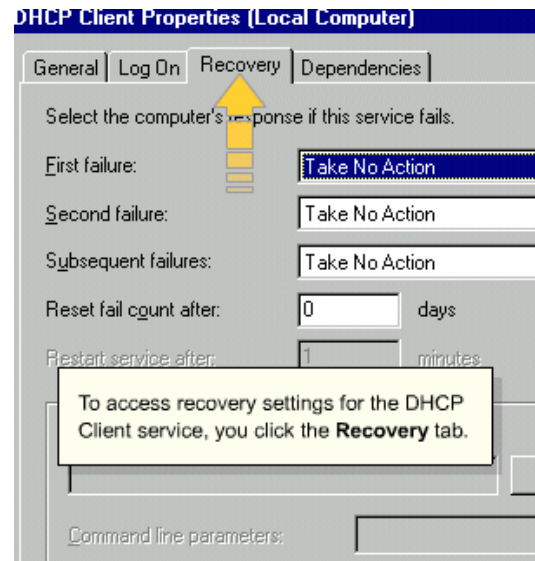
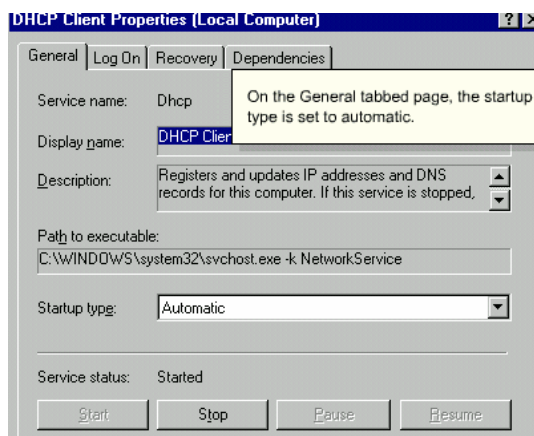


The tabbed page also displays a list of system components that depend on the selected service.

The DHCP Client service, for example, depends on the AFD Network Support Environment and the Transmission Control Protocol/Internet Protocol (TCP/IP) Protocol Driver services. In turn, the WinHTTP Web Proxy Auto-Discovery application requires the DHCP Client service to operate.

Suppose that you have recently installed the DHCP Client service. You now want to check the properties of the service, including general information and recovery settings.

From the Services console, you first access the properties of the DHCP Client service.



SkillCheck

Suppose that, as a network administrator, you need to check the recovery options configured for when the DNS Server service fails. You've already opened the Services console.

You double-click **DNS Server** in the Services console and then click the **Recovery tab** in the Properties dialog box for the service to access the recovery settings.

Services

Suppose that you are responsible for maintaining a critical web site for your company. You need to ensure that if the web server fails, no significant disruption of web services results.

You decide to configure a sequence of recovery actions to occur if the Internet Information Service (IIS) Admin Service fails. So you scroll down the right-hand pane of the Services console to the service.

File... Started Automatic Local

Double-click **IIS Admin Service** and click the **Recovery** tab in the Properties dialog box for the service.

n.

Name	Desc
File Replication Servi...	Allow
Help and Support	Enab
HTTP SSL	This
Human Interface De...	Enab
IIS Admin Service	Enab
ClipBook	Enab
COM+ Event System	Supp
COM+ System Applic...	Man
Computer Browser	Maint
Counterpane Servic...	Provi

IIS Admin Service Properties (Local Computer)

General | Log On | Recovery | Dependencies

Service name: IISADMIN

Display name: IIS Admin Service

Description: Enables this server to administer Web and FTP services. If this service is stopped, the server will be

Path to executable: C:\WINDOWS\system32\inetssrv\inetinfo.exe

Startup type: Automatic

IIS Admin Service Properties (Local Computer)

General | Log On | Recovery | Dependencies

Select the computer's response if this service fails.

First failure: Take No Action

Second failure: Take No Action

Subsequent failures: Take No Action

Reset fail count after: 1 days

Restart service after: 1 minutes

Run program

Program:

On the Recovery tabbed page, you want to ensure that if the IIS Admin Service fails to start, the Services console will try to restart the service, and if the service still does not start, the OS will reboot the computer.

To do this, you select the **Restart the Service** option from the First failure drop-down list. And you select the **Restart the Computer** option from the Second failure drop-down list.

IIS Admin Service Properties (Local Computer)

General | Log On | Recovery | Dependencies

Select the computer's response if this service fails.

First failure: Restart the Service

Second failure: Restart the Computer

Subsequent failures: Take No Action

Reset fail count after: 1 days

Restart service after: 1 minutes

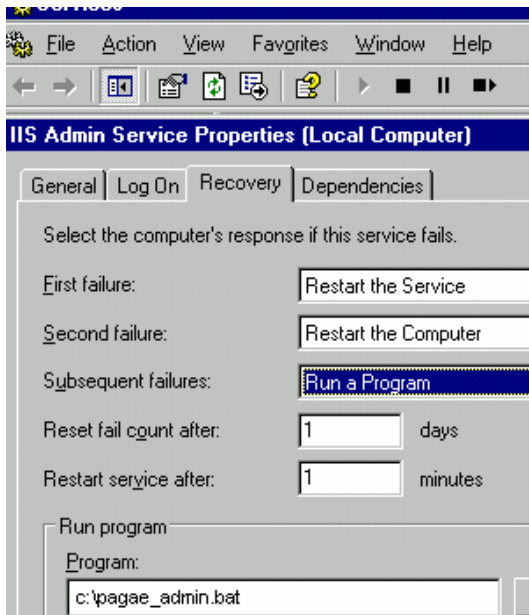
Run program

Program:

If the IIS Admin Service fails to start after the computer reboots, you want the operating system to run a program to fix the problem.

Select the **Run a Program** option from the Subsequent failures drop-down list and enter `c:\page_admin.bat` in the Program text box.

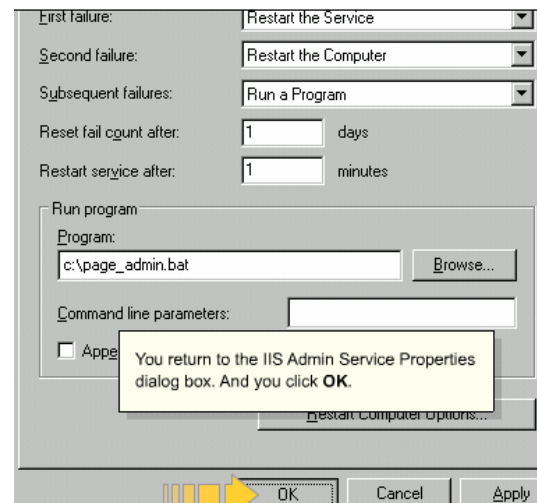
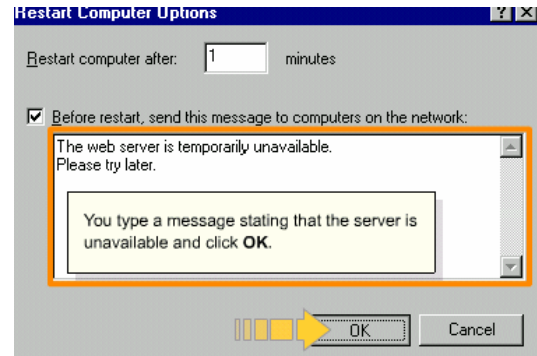
Services



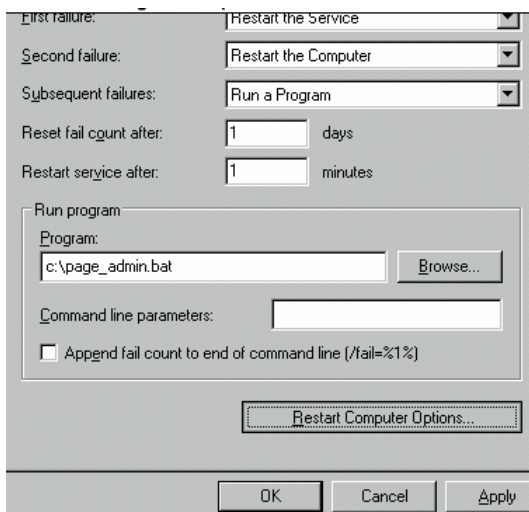
If the IIS Admin Service fails even after the OS reboots the computer, the page_admin.bat program will now run to troubleshoot the service.

Because you have set the OS to restart the computer after a second failure of the IIS Admin Service, you decide to enter a message for the operating system to send all clients before it restarts the computer.

To do this, you first click the **Restart Computer Options** button.



You have now set recovery options for the IIS Admin Service.



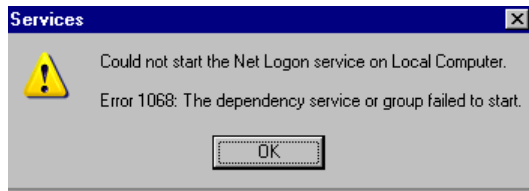
Services

SkillCheck

Suppose the FTP Publishing Service fails once, you want the operating system to attempt restarting the service. If it fails again, you want the computer to reboot. And if it still fails after a reboot, you want the operating system to execute a program named `page_admin.bat`, which is located on the C: drive. To configure these options, you have navigated to the Recovery tabbed page of the Properties dialog box for the service.

To set the appropriate recovery options, you select **Restart the Service** from the First failure drop-down list, **Restart the Computer** from the Second failure drop-down list, and **Run a Program** from the Subsequent failures drop-down list, type `c:\page_admin.bat` in the Program text box, and click **OK**.

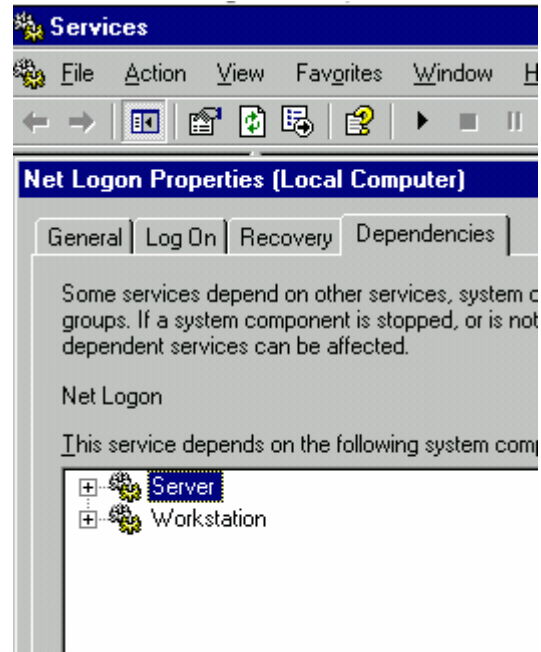
In another scenario, the Net Logon service has stopped. You've tried to restart it, but without any success.



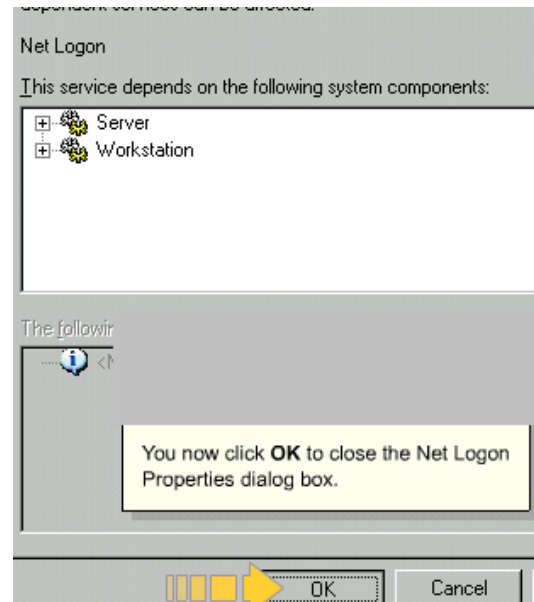
To troubleshoot the problem with the service, you need to check which system components the service depends on.

This service... Manual

Double-click the **Net Logon** service and click the **Dependencies** tab in the Properties dialog box for the service.



The Dependencies tabbed page shows that the Net Logon service depends on the Server and Workstation services.



Services

You check the services that the Net Logon service requires in the Services console and find that the Workstation service has been disabled.

So you need to re-enable the Workstation service to start up with the operating system.

Double-click the **Workstation** service, select **Automatic** from the Startup type drop-down list on the General tabbed page, and click **Apply**.

Name	Description	Status	Startup Type
Special Administratio...	Allows admi...		Manual
System Event Notific...	Monitors sy...	Started	Automatic
Workstation	Creates and...	Stopped	Disabled
World Wide Web Pu...	Provides W...	Started	Automatic
Telephony	Provides Te...	Started	Manual
Telnet	Enables a r...		Disabled
Terminal Services	Allows user...	Started	Manual
Terminal Services S...	Enables a u...		Disabled
Themes	Provides us...		Disabled
Uninterruptible Powe...	Manages a...		Manual
Upload Manager	Manages th...		Manual
Virtual Disk Service	Provides so...		Manual
Volume Shadow Copy	Manages a...		Automatic

Workstation Properties (Local Computer)

General | Log On | Recovery | Dependencies

Service name: lanmanworkstation

Display name: Workstation

Description: Creates and maintains client network connections to remote servers. If this service is stopped, these

Path to executable: C:\WINDOWS\system32\svchost.exe -k netsvcs

Startup type: Automatic

Service status: Stopped

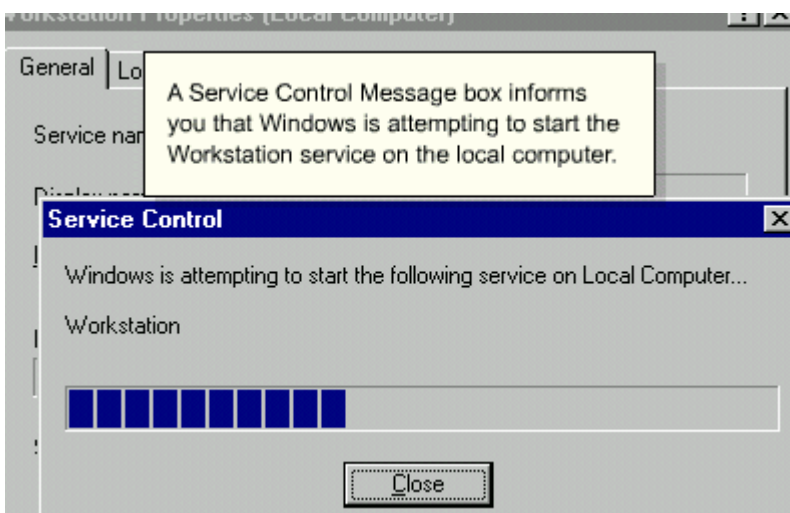
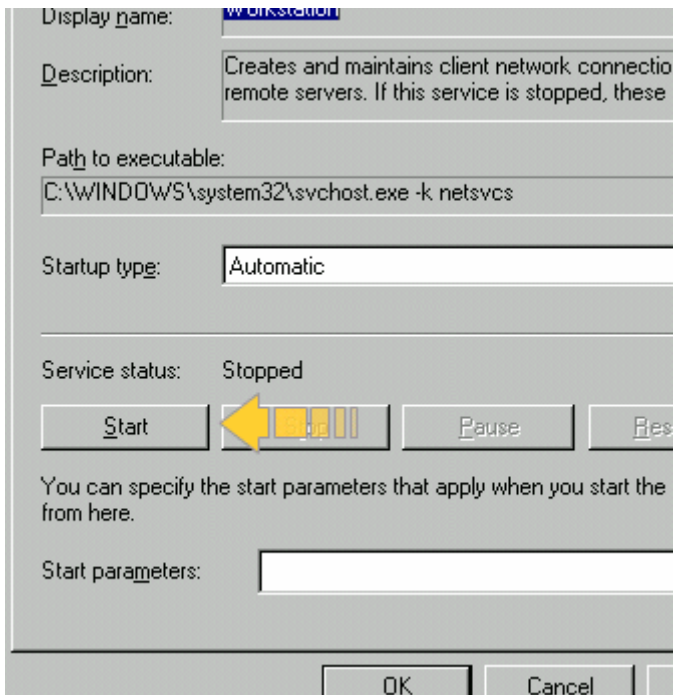
Start Stop Pause Resume

You can specify the start parameters that apply when you start the service

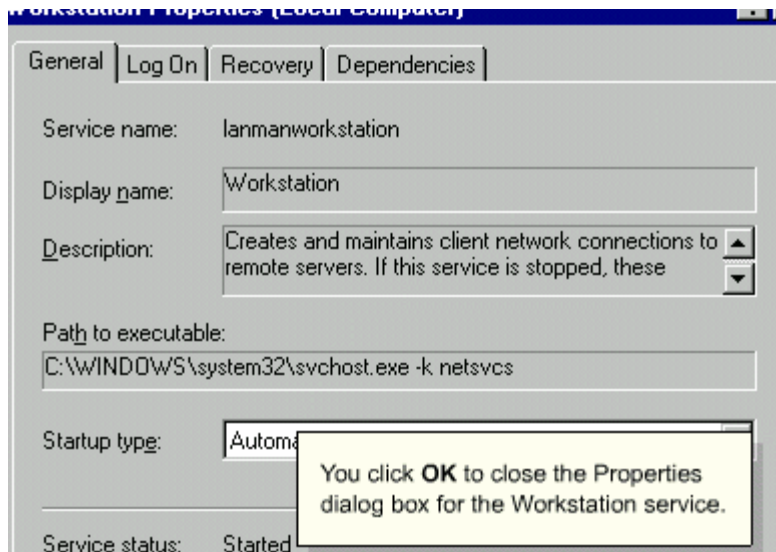
You have to start the Workstation service once you have applied the new settings.

Click the **Start** button on the General tabbed page.

Services

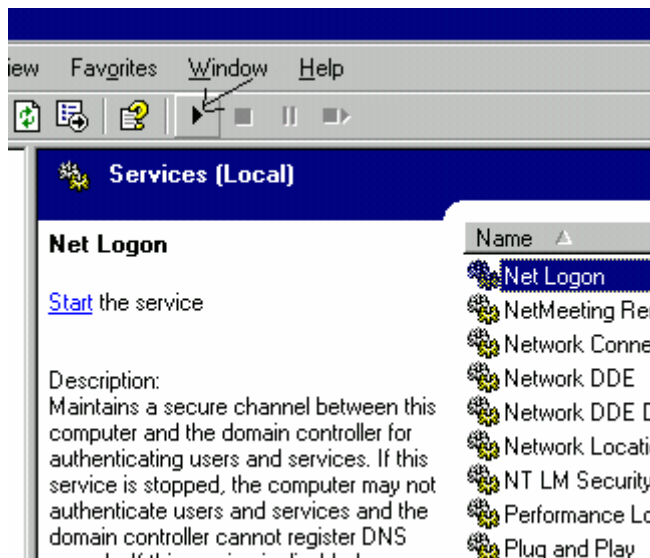


Services

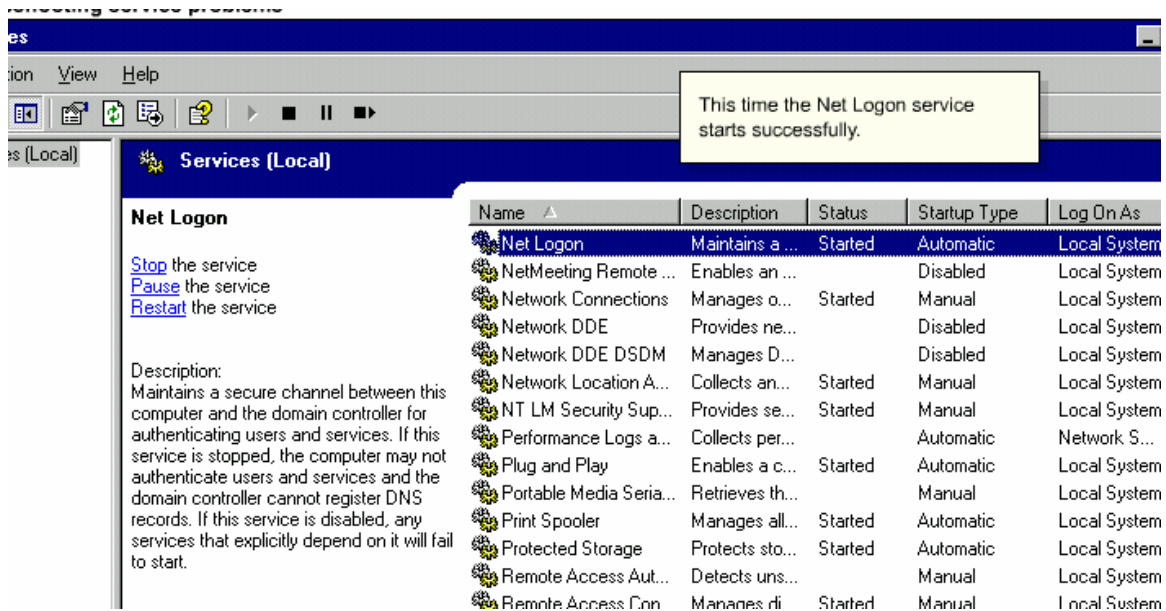


You've re-enabled the Workstation service, so you now attempt to restart the Net Logon service from the Services console.

Select the **Net Logon** service and click the **Start** button on the Standard toolbar.



Services



SkillCheck

Suppose that the Net Logon service fails to start and you've identified the Server service – which has been disabled – as the problem.

To enable the Server service to restart when the OS starts, you double-click the **Server** service to access its Properties dialog box, select **Automatic** from the Startup type drop-down list, click **Apply**, click **Start**, and then click **OK**.

Summary

The Services console allows you to manage services on local and remote computers. For each installed service, it displays information in the Name, Description, Status, Startup Type, and Log On As columns. You can also start, stop, pause, restart, and disable services using the console.

You access the Services console from the **Start** menu. In addition to using the console to view service information or to change the status of a service, you can use it to set recovery actions for when a service fails. You can also use it to specify whether a service starts automatically with the operating system (OS).

You can view detailed information and access settings for a service by accessing its Properties dialog box from the Services console.

Services

Exercise

In this exercise, you're required to resolve a service dependency issue and specify service failure actions.

This involves the following tasks:

- Resolving a dependency issue
- Specifying failure actions


Services (Local)

FTP Publishing

[Start](#) the service

Description:
Enables this Protocol (FTP) stopped, the FTP server. I services that to start.

Suppose that you are a Windows Server 2003 network administrator responsible for a web site that is critical to your company. You notice that the FTP Publishing Service has stopped. When you try to restart the service, you receive the following error message.



The screenshot shows the Windows Services console with the 'FTP Publishing' service selected. An error dialog box is displayed over the console, stating: 'Could not start the FTP Publishing Service service on Local Computer. Error 1068: The dependency service or group failed to start.' The dialog box has an 'OK' button.

Task 1 of 2

From the Services console, check for and restart any disabled services on which the FTP Publishing Service depends. Then restart the FTP Publishing Service service.

Steps

1. Double-click **FTP Publishing Service**
2. Click the **Dependencies** tab
3. Identify the service on which the FTP Publishing Service service depends and click **OK**
4. Double-click **IIS Admin Service**
5. Select **Automatic** from the Startup type drop-down list and click **Apply**
6. Click **Start** and click **OK**

Task 2 of 2

Set recovery actions for the DNS Server service so that the operating system (OS) attempts to restart it after a first failure and restarts the computer after a second failure. If the OS needs to restart the computer, enter the message "The server is temporarily unavailable."

Steps

1. Double-click **DNS Server**
2. Click the **Recovery** tab
3. Select **Restart the Service** from the First failure drop-down list
4. Select **Restart the Computer** from the Second failure drop-down list
5. Click the **Restart Computer Options** button
6. Type **The server is temporarily unavailable** and click **OK**
7. Click **OK**

14

Services