

**Permissions Exercise -  
QUESTION NO: 1**

**You are the ITC for your school. Your network consists of a single Active Directory domain. All servers run Windows Server 2008. All client computers run Windows 7 Pro. Each of the departments (English, Math etc) has an exclusive shared folder on a server named Fileserver.**

**You need to ensure that the Department heads can reset file permissions for any file and folder on the Fileserver for their respective departments. You want to achieve this goal by using the minimum amount of administrative effort.**

**What are two possible ways to achieve this goal? (Each correct answer is a complete solution. Select two.)**

- A. Assign the Department Head the **Allow - Full Control NTFS** permission for each folder.
- B. Assign the Department Head the **Take ownership of files or other objects** user right.
- C. Assign the Department Head the **Bypass traverse checking** user right.
- D. Assign the Department Head the **Act as part of the operating system** user right.

**QUESTION 2**

**You are the network administrator for your school. The network consists of a single Active Directory forest containing two domains, Lowerschool.com and Upperschool.com.**

**The functional level of both domains is Windows 2008. Lowerschool.com contains two domain controllers running Windows 2008 and three domain controllers running Windows 2003 server. A member server named TestData (located in the Lowerschool domain) hosts applications and files that all teachers need to access.**

**You need to enable all teachers in Upperschool.com to access the applications and files on the TestData Server.**

**Which three actions should you perform? (Each correct answer is a part of a complete solution. Select three.)**

- A. Create a domain local group named **TestdataUsers** in Lowerschool.com.
- B. Create a domain local group named **TestdataUsers** in Upperschool.com.
- C. Add the Users group from Lowerschool.com to **TestdataUsers**.
- D. Add the Users group from Upperschool.com to **TestdataUsers**.
- E. **On** TestData, grant the appropriate permissions to the Users group from Upperschool.com.
- F. **On** TestData, grant the appropriate permissions to **TestdataUsers**.

### QUESTION 3

You are a network administrator for **your school**. The network consists of a single Active Directory domain named **Combermere.com**. All servers run Windows Server 2003. All client computers run Windows **XP Professional**.

A server named Exams contains a folder that is shared as **EndofTermMarks**. A global group named **YearHeads** has permission to access the shared folder. One user reports that he needs access to the **EndofTermMarks** shared folder. You add his user account to the **YearHeads** global group. When the user attempts to connect to the shared folder by typing `\\Exams\EndofTermMarks`, he receives the following error message: "`\\Exams\EndofTermMarks` is not accessible. You might not have permissions to use the network resource. Contact the administrator of this server to find out if you have access permissions. Access is denied. You need to ensure that the user can access the **EndofTermMarks** shared folder on Exams.

What should you do?

- A. Instruct the user to type `\\Combermere\EndofTermMarks` when he attempts to access the folder.
- B. Add the Anonymous Logon group to the **ACL** for the **EndofTermMarks** shared folder.
- C. Select the **Replace permission entries on all child object with entries shown here that apply to child objects** check box.
- D. Instruct the user to log off and log on again before he accesses the folder.

### QUESTION 4

You are the network administrator for **your school**. The network consists of a single Active Directory domain named **LodgeSchool.com**. All servers run Windows Server 2008.

All data is stored in shared folders on network file servers. The data for each department is stored in a departmental shared folder. Users in each department are members of the departmental global group. Each departmental global group is assigned the Allow - Full Control permission for the corresponding departmental shared folder. Requirements state that all access to shared folders must be configured by using global groups.

A user named **Dr King** teaches in the English department. **Dr King** needs to be able to modify files in the shared folder.

You need to ensure that **Dr King** has the minimum permissions for the shared folder that he needs to do his job. You need to achieve this goal while meeting domain requirements and without granting unnecessary permissions.

What should you do?

- A. Add **Dr King's** user account to the global group.
- B. Assign the global group the **Allow - Change** permission for the

shared folder.

C. Create a new global group. Add Dr King's user account to the group. Assign the new global group the **Allow - Change** permission for the shared folder.

D. Assign Dr King's user account the **Allow - Change** permission for the shared folder.

#### QUESTION 5

You are the network administrator for **Contoso.com**. The network consists of a single Active Directory domain named **Contoso.com**. All network servers run Windows Server 2008, and all client computers run Windows 7 Pro.

You create and share a folder named **Sales** on a member server. You apply the default share permission and NTFS permissions to **Sales**. Then you create a folder named **SalesForecast** in **Sales**. You apply the default NTFS permissions to **SalesForecast**.

Managers in the sales department are members of a domain user group named **SalesManagers**. When members of **SalesManagers** try to add files to **SalesForecast**, they receive the "Access is denied" error message.

You need to configure permissions on these folders to fulfil the following requirements:

- Members of **SalesManagers** must be able to create, modify, and delete files in both folders.
- All other domain users must only be able to read files in both folders.

What should you do?

A. Configure the share permissions on **Sales** to assign the **Allow - Change** permission to the Everyone group. Configure the **NTSF** permissions on **SalesForecast** to assign the **Allow - Write** permission to the **SalesManagers** group.

B. Configure the share permissions on **Sales** to assign the **Allow - Change** permissions to the **SalesManagers** group. Configure the **NTSF** permissions on **Sales** to assign the **Allow - Write** permissions to the **SalesManagers** group.

C. Configure the share permissions on **Sales** to assign the **Allow - Change** permissions to the Everyone group. Configure the **NTFS** permissions on **Sales** to assign the **Allow - Modify** permission to the **SalesManagers** group.

D. Configure the share permissions on **Sales** to assign the **Allow - Change** permission to the **SalesManagers** group. Configure the **NTFS** permissions on **Sales** to assign the **Allow - Modify** permission to the **SalesManagers** group.

## QUESTION 6

You are the network administrator for **Contoso.com**. The network consists of a single Active Directory domain named **Contoso.com**. Some client computers run Windows 7, and the rest run Windows **XP Professional**.

Users in the accounting department require a shared folder for their own use only.

The accounting users must be able to read, edit, and delete files in the shared folder.

You create the shared folder and use default share permissions. You assign the **Allow - Full Control NTFS** permission to members of the Administrators group. You assign the **Allow - Modify NTFS** permission to the accounting users.

**However**, accounting users report that they cannot access the shared folder.

How should you solve this problem?

- A. Change the type of setting on the folder to **Documents (for any file types)**.
- B. Change the NTFS permissions on the folder to assign the **Allow - Delete Sub-Folders and Files** permission to the accounting users.
- C. Add the accounting users as owners of the folder.
- D. Change the share permissions to assign the **Allow - Full Control** permission to the accounting users.

## QUESTION 7

### QUESTION NO: 13

You are the network administrator for **Contoso.com**. The network consists of a single

Active Directory domain **Contoso.com**. All network servers run Windows Server 2003. Most client computers run Windows **XP Professional**, and the rest run Windows 2000 Professional.

You create and share a folder named **ProjectDocs** on a member server. The current

state of permissions for the folder is shown in the dialog box.

Users report that they receive an 'Access is denied' error message when they try to

add or create files and folders in **ProjectDocs**.

You need to configure the permissions on **ProjectsDocs** to fulfill the following requirements:

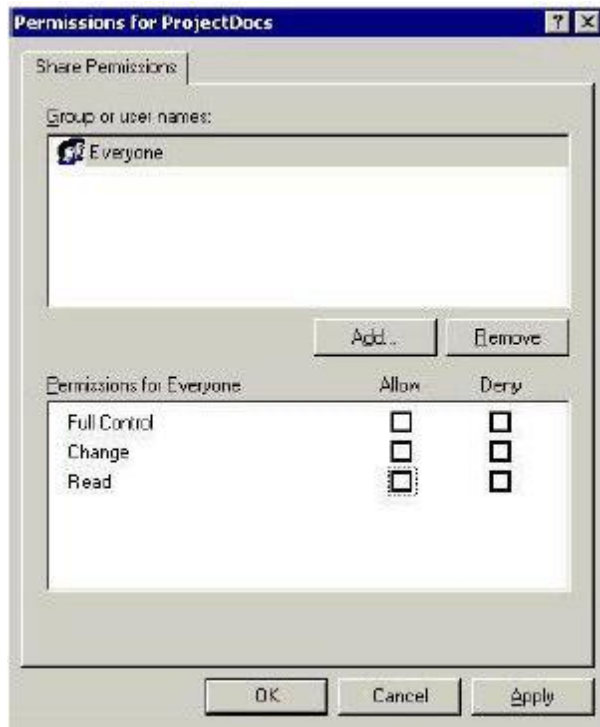
- Domain users must be able to create or add files and folder.
- Domain users must not be able to change **NTFS** permissions on the files or

folders that they create or add.

- Domain users must receive the minimum level of required permissions.

What should you do?

To answer, configure the appropriate option or options in the dialog box.



## QUESTION 8

You are the network administrator for **Contoso.com**. The network consists of a single Active Directory domain **Contoso.com**. The functional level of the domain is

Windows 2000 native. All network servers run Windows Server 2008, and all client computers run Windows 7 Pro.

The network includes a shared folder named **Info**. Your boss Dr. King reports that he is often unable to access this folder. You discover that the problem occurs whenever more than 10 users try to connect to the folder. You need to ensure that all appropriate users can access **Info**.

What should you do?

- A. Decrease the default user quota limit.
- B. Raise the functional level of the domain to Windows Server 2003.
- C. Purchase additional client access licenses.
- D. Move Info to one of the servers.

#### QUESTION 9

You are the administrator of **Contoso's** network. Your accounting department has a Windows Server 2003 computer named **ContosoSrvA**. This computer hosts a secured application that is shared among several users in the accounting department. All users of the application must log on locally to **ContosoSrvA**.

You decide to create desktop shortcuts that point to the application. These shortcuts must be available only to new users of **ContosoSrvA**. Which folder or folders should you modify on Server? (Choose all that apply) To answer, select the appropriate folder or folders in the work area.



**Answer:** Default User

**Explanation:** When a new user logs on to a machine for the first time, a new profile is created for that user.

The "Default User" profile is copied and given the same name as the **username**. Any settings in the Default User profile will be applied to any new users.

**Incorrect Answers:**

**All Users:** Settings in this profile apply to all users of the machine, including current users. This is contrary to the requirements set out in the question