

REMOTE ACCESS INSTALLATION

2012R2

WELCOME TO SERVER MANAGER

- Add Roles and Features
- Remove Roles and Features
- Add Servers
- Create Server Group
- Server Manager Properties

1 Configure this local server

- 2 Add roles and features
- 3 Add other servers to manage
- 4 Create a server group
- 5 Connect this server to cloud services

Hide

AD SERVER GROUPS

Server groups: 1 | Servers total: 2

| | | | |
|---------------|---------------|---------------|---------------|
| AD CS 1 | AD DS 1 | AD FS 1 | AD RMS 1 |
| Manageability | Manageability | Manageability | Manageability |
| Events | Events | Events | Events |
| Services | Services | Services | Performance |



Add Roles and Features Wizard



Before you begin

DESTINATION SERVER
WIN-E630K0E1QHE.server2012.com

Before You Begin

Installation Type

Server Selection

Server Roles

Features

Confirmation

Results

This wizard helps you install roles, role services, or features. You determine which roles, role services, or features to install based on the computing needs of your organization, such as sharing documents, or hosting a website.

To remove roles, role services, or features:
[Start the Remove Roles and Features Wizard](#)

Before you continue, verify that the following tasks have been completed:

- The Administrator account has a strong password
- Network settings, such as static IP addresses, are configured
- The most current security updates from Windows Update are installed

If you must verify that any of the preceding prerequisites have been completed, close the wizard, complete the steps, and then run the wizard again.

To continue, click Next.

Skip this page by default

< Previous

Next >

Install

Cancel



Select installation type

DESTINATION SERVER
WIN-E630K0E1QHE.server2012.com

Before You Begin

Installation Type

Server Selection

Server Roles

Features

Confirmation

Results

Select the installation type. You can install roles and features on a running physical computer or virtual machine, or on an offline virtual hard disk (VHD).

- Role-based or feature-based installation**
Configure a single server by adding roles, role services, and features.
- Remote Desktop Services installation**
Install required role services for Virtual Desktop Infrastructure (VDI) to create a virtual machine-based or session-based desktop deployment.

< Previous

Next >

Install

Cancel



Add Roles and Features Wizard



Select destination server

DESTINATION SERVER
WIN-E630K0E1QHE.server2012.com

Before You Begin

Installation Type

Server Selection

Server Roles

Features

Confirmation

Results

Select a server or a virtual hard disk on which to install roles and features.

- Select a server from the server pool
- Select a virtual hard disk

Server Pool

Filter:

| Name | IP Address | Operating System |
|-------------------------|-------------|---|
| WIN-E630K0E1QHE.serv... | 192.168.2.3 | Microsoft Windows Server 2012 R2 Standard |

1 Computer(s) found

This page shows servers that are running Windows Server 2012, and that have been added by using the Add Servers command in Server Manager. Offline servers and newly-added servers from which data collection is still incomplete are not shown.

< Previous

Next >

Install

Cancel

Add Roles and Features Wizard



Select server roles

DESTINATION SERVER
WIN-E630K0E1QHE.server2012.com

Before You Begin

Installation Type

Server Selection

Server Roles

Features

Remote Access

Role Services

Confirmation

Results

Select one or more roles to install on the selected server.

Roles

- Active Directory Certificate Services (Installed)
- Active Directory Domain Services (Installed)
- Active Directory Federation Services (Installed)
- Active Directory Lightweight Directory Services
- Active Directory Rights Management Services (1 of 2 installed)
- Application Server
- DHCP Server (Installed)
- DNS Server (Installed)
- Fax Server
- File and Storage Services (6 of 12 installed)
- Hyper-V
- Network Policy and Access Services
- Print and Document Services (1 of 4 installed)
- Remote Access

Description

Remote Access provides seamless connectivity through DirectAccess, VPN, and Web Application Proxy. DirectAccess provides an Always On and Always Managed experience. RAS provides traditional VPN services, including site-to-site (branch-office or cloud-based) connectivity. Web Application Proxy enables the publishing of selected HTTP- and HTTPS-based applications from your corporate network to client devices outside of the corporate network. Routing provides traditional routing capabilities, including NAT and other connectivity options. RAS and Routing can be deployed in single-tenant or multi-tenant mode.

< Previous

Next >

Install

Cancel



Add Roles and Features Wizard



Select features

DESTINATION SERVER
WIN-E630K0E1QHE.server2012.com

Before You Begin

Installation Type

Server Selection

Server Roles

Features

Remote Access

Role Services

Confirmation

Results

Select one or more features to install on the selected server.

Features

- .NET Framework 3.5 Features
- .NET Framework 4.5 Features (5 of 7 installed)
- Background Intelligent Transfer Service (BITS)
- BitLocker Drive Encryption
- BitLocker Network Unlock
- BranchCache (Installed)
- Client for NFS (Installed)
- Data Center Bridging
- Direct Play
- Enhanced Storage
- Failover Clustering
- Group Policy Management (Installed)
- IIS Hostable Web Core (Installed)
- Ink and Handwriting Services (Installed)

Description

.NET Framework 3.5 combines the power of the .NET Framework 2.0 APIs with new technologies for building applications that offer appealing user interfaces, protect your customers' personal identity information, enable seamless and secure communication, and provide the ability to model a range of business processes.

< Previous

Next >

Install

Cancel



Add Roles and Features Wizard



Remote Access

DESTINATION SERVER
WIN-E630K0E1QHE.server2012.com

Before You Begin

Installation Type

Server Selection

Server Roles

Features

Remote Access

Role Services

Confirmation

Results

Remote Access integrates DirectAccess, VPN, and Web Application Proxy in a single management console.

Deploy DirectAccess to allow managed domain-joined computers to connect to the internal corporate network as DirectAccess clients. Connectivity is seamless and transparent, and is available any time client computers are located on the Internet. DirectAccess administrators can remotely manage clients, ensuring that mobile computers are kept up-to-date with security updates and corporate compliance requirements.

Deploy VPN to allow client computers running operating systems not supported by DirectAccess, or configured in a workgroup, to remotely access corporate networks over a VPN connection.

Deploy Web Application Proxy to publish selected HTTP- and HTTPS-based applications from your corporate network to client devices outside of the corporate network. It can use AD FS to ensure that users are authenticated before they gain access to published applications. Web Application Proxy also provides proxy functionality for your AD FS servers.

Configure RRAS routing features using the Routing and Remote Access console.

< Previous

Next >

Install

Cancel



Add Roles and Features Wizard



Select role services

DESTINATION SERVER
WIN-E630K0E1QHE.server2012.com

Before You Begin

Installation Type

Server Selection

Server Roles

Features

Remote Access

Role Services

Confirmation

Results

Select the role services to install for Remote Access

Role services

- DirectAccess and VPN (RAS)**
- Routing
- Web Application Proxy

Description

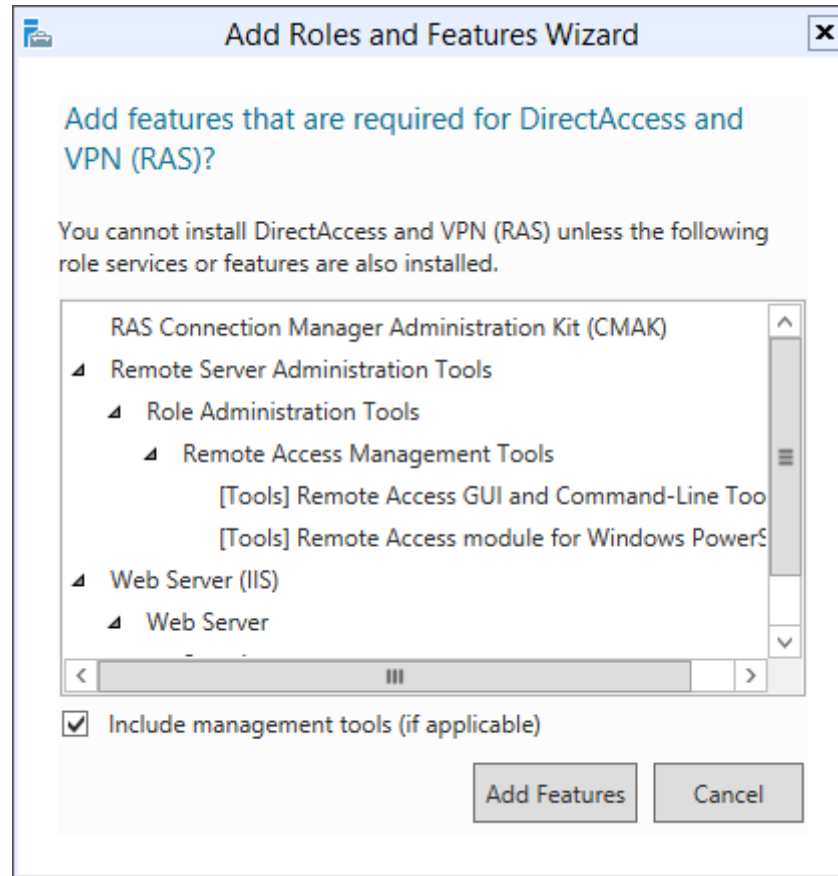
DirectAccess gives users the experience of being seamlessly connected to their corporate network any time they have Internet access. With DirectAccess, mobile computers can be managed any time the computer has Internet connectivity, ensuring mobile users stay up-to-date with security and system health policies. VPN uses the connectivity of the Internet plus a combination of tunnelling and data encryption technologies to connect remote clients and remote offices.

< Previous

Next >

Install

Cancel





Add Roles and Features Wizard



Confirm installation selections

DESTINATION SERVER
WIN-E630K0E1QHE.server2012.com

Before You Begin

Installation Type

Server Selection

Server Roles

Features

Remote Access

Role Services

Confirmation

Results

To install the following roles, role services, or features on selected server, click Install.

Restart the destination server automatically if required

Optional features (such as administration tools) might be displayed on this page because they have been selected automatically. If you do not want to install these optional features, click Previous to clear their check boxes.

RAS Connection Manager Administration Kit (CMAK)
Remote Access
 DirectAccess and VPN (RAS)
Remote Server Administration Tools
 Role Administration Tools
 Remote Access Management Tools
 Remote Access GUI and Command-Line Tools
 Remote Access module for Windows PowerShell
Web Server (IIS)
 Web Server

[Export configuration settings](#)
[Specify an alternate source path](#)

< Previous

Next >

Install

Cancel



Add Roles and Features Wizard



Installation progress

DESTINATION SERVER
WIN-E630K0E1QHE.server2012.com

Before You Begin

Installation Type

Server Selection

Server Roles

Features

Remote Access

Role Services

Confirmation

Results

View installation progress

Feature installation

Configuration required. Installation succeeded on WIN-E630K0E1QHE.server2012.com.

Remote Access

DirectAccess and VPN (RAS)

Configure the role

[Open the Getting Started Wizard](#)

RAS Connection Manager Administration Kit (CAK)

Remote Server Administration Tools

Role Administration Tools

Remote Access Management Tools

Remote Access GUI and Command-Line Tools

Remote Access module for Windows PowerShell

Web Server (IIS)



You can close this wizard without interrupting running tasks. View task progress or open this page again by clicking Notifications in the command bar, and then Task Details.

[Export configuration settings](#)

< Previous

Next >

Close

Cancel



Configure Remote Access

Getting Started Wizard

Welcome to Remote Access

Use the options on this page to configure DirectAccess and VPN.

- ➔ **Deploy both DirectAccess and VPN (recommended)**
Configure DirectAccess and VPN on the server, and enable DirectAccess client computers. Allow remote client computers not supported for DirectAccess to connect over VPN.

- ➔ **Deploy DirectAccess only**
Configure DirectAccess on the server, and enable DirectAccess client computers.

- ➔ **Deploy VPN only**
Configure VPN using the Routing and Remote Access console. Remote client computers can connect over VPN, and multiple sites can be connected using VPN site-to-site connections. VPN can be used by clients not supported for DirectAccess.

File Action View Help

Routing and Remote Access

Server Status

WIN-E630K0E1QHE (local)

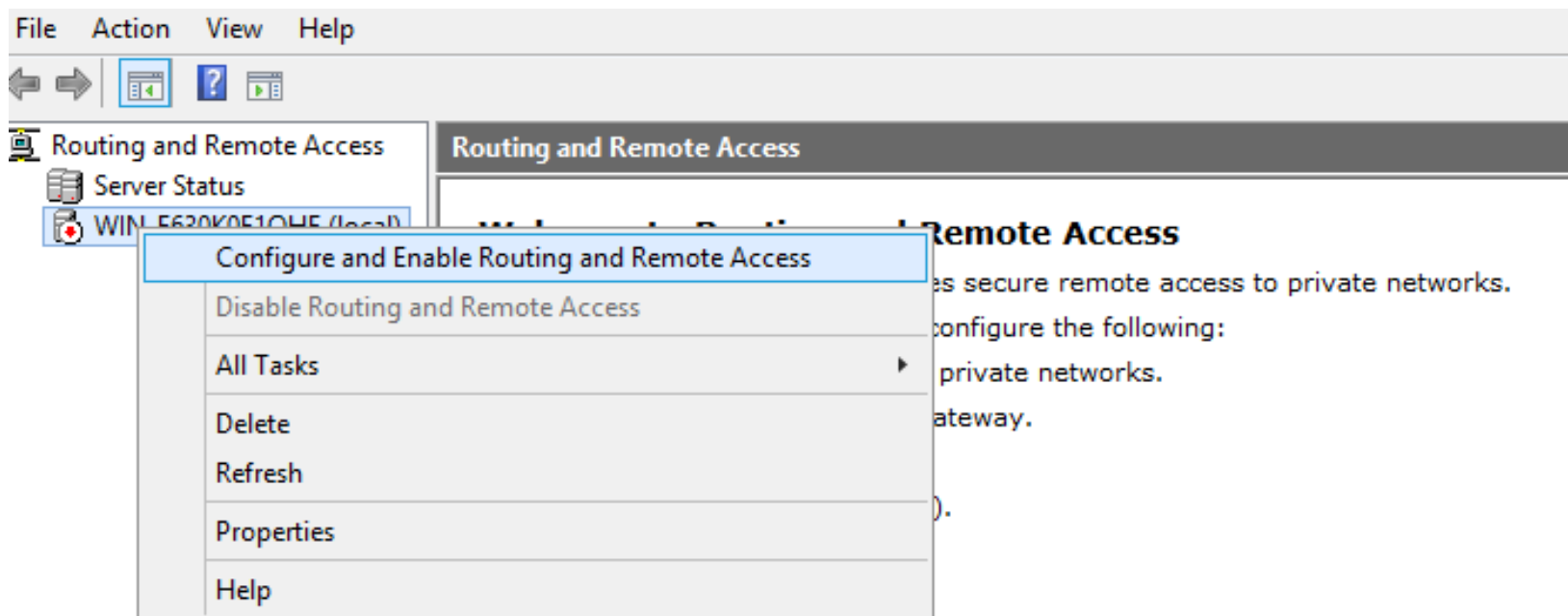
Routing and Remote Access

Welcome to Routing and Remote Access

Routing and Remote Access provides secure remote access to private networks. Use Routing and remote access to configure the following:

- A secure connection between two private networks.
- A Virtual Private Network (VPN) gateway.
- A Dial-up remote access server.
- Network address translation (NAT).
- LAN routing.
- A basic firewall.

To add a Routing and Remote Access server, on the Action menu, click Add Server.



To add a Routing and Remote Access server, on the Action menu, click Add Server.

Routing and Remote Access Server Setup Wizard

Welcome to the Routing and Remote Access Server Setup Wizard

This wizard helps you set up your server so that you can connect to other networks and allow connections from remote clients.

To continue, click Next.

< Back

Next >

Cancel

Routing and Remote Access Server Setup Wizard

Configuration

You can enable any of the following combinations of services, or you can customize this server.

- Remote access (dial-up or VPN)
Allow remote clients to connect to this server through either a dial-up connection or a secure virtual private network (VPN) Internet connection.
- Network address translation (NAT)
Allow internal clients to connect to the Internet using one public IP address.
- Virtual private network (VPN) access and NAT
Allow remote clients to connect to this server through the Internet and local clients to connect to the Internet using a single public IP address.
- Secure connection between two private networks
Connect this network to a remote network, such as a branch office.
- Custom configuration
Select any combination of the features available in Routing and Remote Access.

< Back

Next >

Cancel

Routing and Remote Access Server Setup Wizard

Custom Configuration

When this wizard closes, you can configure the selected services in the Routing and Remote Access console.

Select the services that you want to enable on this server.

- VPN access
- Dial-up access
- Demand-dial connections (used for branch office routing)
- NAT
- LAN routing

< Back

Next >

Cancel

Routing and Remote Access Server Setup Wizard

Completing the Routing and Remote Access Server Setup Wizard

You have successfully completed the Routing and Remote Access Server Setup wizard.

Summary of selections:

VPN access

After you close this wizard, configure the selected services in the Routing and Remote Access console.

To close this wizard, click Finish.

< Back

Finish

Cancel

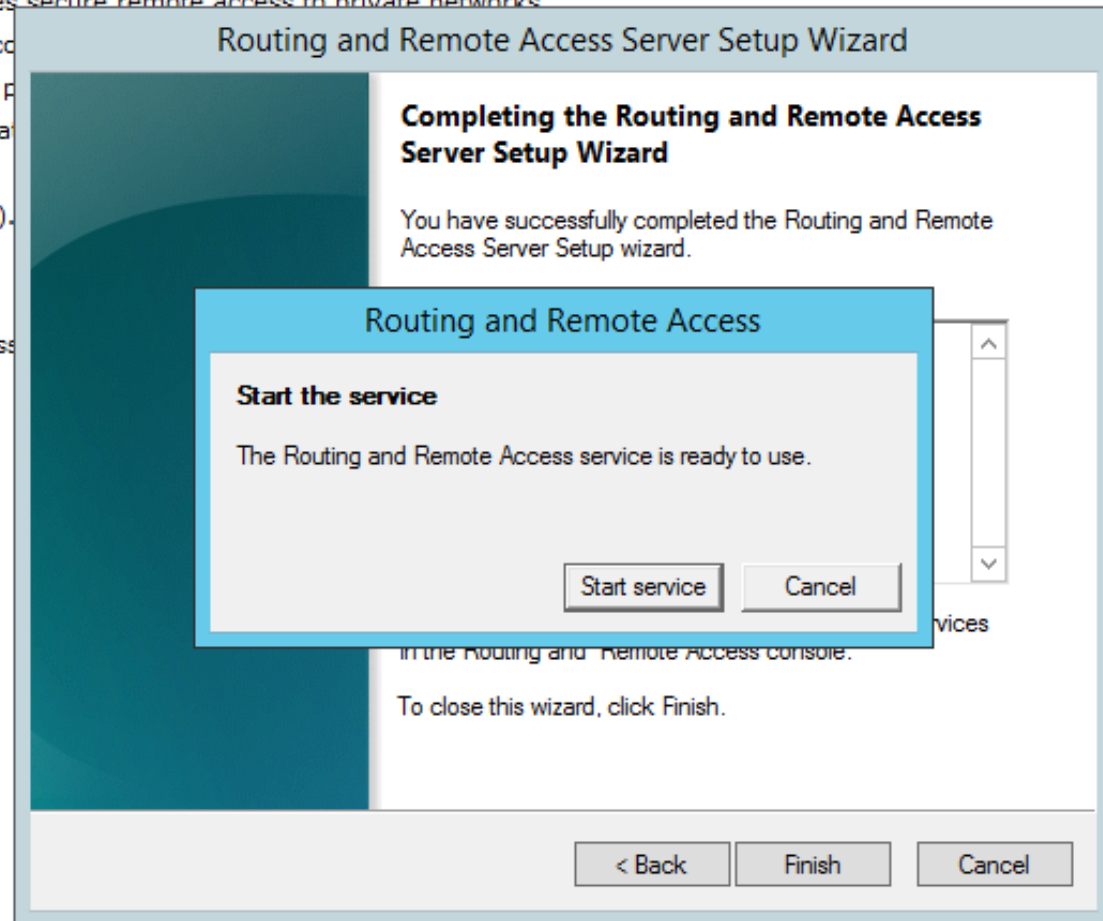
Welcome to Routing and Remote Access

Routing and Remote Access provides secure remote access to private networks.

Use Routing and remote access to do the following:

- A secure connection between two private networks.
- A Virtual Private Network (VPN) gateway.
- A Dial-up remote access server.
- Network address translation (NAT).
- LAN routing.
- A basic firewall.

To add a Routing and Remote Access



Routing and Remote Access Server Setup Wizard

Completing the Routing and Remote Access Server Setup Wizard

Completing Initialization



Please wait while the Routing and Remote Access service finishes initialization.

After you close this wizard, configure the selected services in the Routing and Remote Access console.

To close this wizard, click Finish.

< Back

Finish

Cancel

File Action View Help

← → [?] []

Routing and Remote Access

- Server Status
- WIN-E630K0E1QHE (local)
 - Network Interfaces
 - Ports
 - Remote Access Clients (0)
 - Remote Access Logging
 - IPv4
 - IPv6
 - General
 - Static Routes

Routing and Remote Access

Welcome to Routing and Remote Access

Routing and Remote Access provides secure remote access to private networks.

Use Routing and remote access to configure the following:

- A secure connection between two private networks.
- A Virtual Private Network (VPN) gateway.
- A Dial-up remote access server.
- Network address translation (NAT).
- LAN routing.
- A basic firewall.

To add a Routing and Remote Access server, on the Action menu, click Add Server.