

WDS – INSTALLING

SERVER 2012



Add Roles and Features Wizard



Before you begin

DESTINATION SERVER
WIN-R44O8GIKKQK.DeanLashley.com

Before You Begin

Installation Type

Server Selection

Server Roles

Features

Confirmation

Results

This wizard helps you install roles, role services, or features. You determine which roles, role services, or features to install based on the computing needs of your organization, such as sharing documents, or hosting a website.

To remove roles, role services, or features:
[Start the Remove Roles and Features Wizard](#)

Before you continue, verify that the following tasks have been completed:

- The Administrator account has a strong password
- Network settings, such as static IP addresses, are configured
- The most current security updates from Windows Update are installed

If you must verify that any of the preceding prerequisites have been completed, close the wizard, complete the steps, and then run the wizard again.

To continue, click Next.

Skip this page by default

< Previous

Next >

Install

Cancel



Select installation type

DESTINATION SERVER
WIN-R44O8GIKKQK.DeanLashley.com

Before You Begin

Installation Type

Server Selection

Server Roles

Features

Confirmation

Results

Select the installation type. You can install roles and features on a running physical computer or virtual machine, or on an offline virtual hard disk (VHD).

Role-based or feature-based installation

Configure a single server by adding roles, role services, and features.

Remote Desktop Services installation

Install required role services for Virtual Desktop Infrastructure (VDI) to create a virtual machine-based or session-based desktop deployment.

< Previous

Next >

Install

Cancel



Add Roles and Features Wizard



Select destination server

DESTINATION SERVER
WIN-R44O8GIKKQK.DeanLashley.com

Before You Begin

Installation Type

Server Selection

Server Roles

Features

Confirmation

Results

Select a server or a virtual hard disk on which to install roles and features.

- Select a server from the server pool
- Select a virtual hard disk

Server Pool

Filter:

Name	IP Address	Operating System
WIN-R44O8GIKKQK.Dea...	192.168.254.60	Microsoft Windows Server 2012 Standard

1 Computer(s) found

This page shows servers that are running Windows Server 2012, and that have been added by using the Add Servers command in Server Manager. Offline servers and newly-added servers from which data collection is still incomplete are not shown.

< Previous

Next >

Install

Cancel



Add Roles and Features Wizard



Select server roles

DESTINATION SERVER
WIN-R44O8GIKKQK.DeanLashley.com

Before You Begin

Installation Type

Server Selection

Server Roles

Features

Confirmation

Results

Select one or more roles to install on the selected server.

Roles

- Active Directory Lightweight Directory Services
- Active Directory Rights Management Services
- Application Server
- DHCP Server
- DNS Server (Installed)
- Fax Server
- ▶ File And Storage Services (Installed)
- ▶ Hyper-V (Installed)
- ▶ Network Policy and Access Services (Installed)
- ▶ Print and Document Services (Installed)
- ▶ Remote Access (Installed)
- Remote Desktop Services
- Volume Activation Services
- ▶ Web Server (IIS) (Installed)
- Windows Deployment Services**

Description

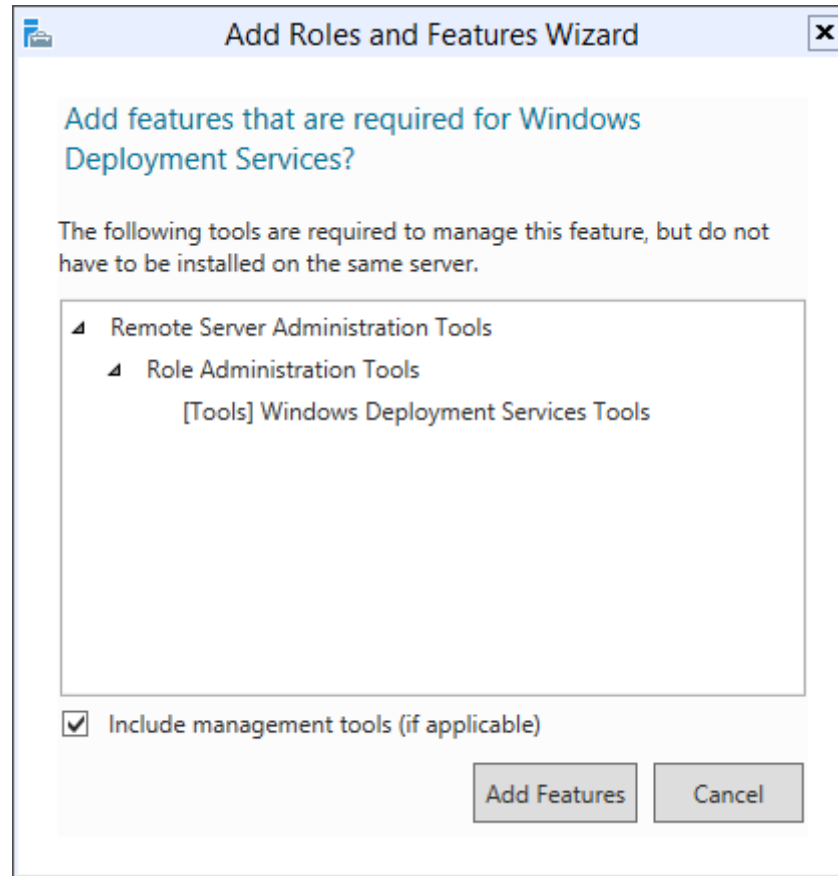
Windows Deployment Services provides a simplified, secure means of rapidly and remotely deploying Windows operating systems to computers over the network.

< Previous

Next >

Install

Cancel





Add Roles and Features Wizard



Select server roles

DESTINATION SERVER
WIN-R44O8GIKKQK.DeanLashley.com

Before You Begin

Installation Type

Server Selection

Server Roles

Features

WDS

Role Services

Confirmation

Results

Select one or more roles to install on the selected server.

Roles

- Active Directory Lightweight Directory Services
- Active Directory Rights Management Services
- Application Server
- DHCP Server
- DNS Server (Installed)
- Fax Server
- ▶ File And Storage Services (Installed)
- ▶ Hyper-V (Installed)
- ▶ Network Policy and Access Services (Installed)
- ▶ Print and Document Services (Installed)
- ▶ Remote Access (Installed)
- Remote Desktop Services
- Volume Activation Services
- ▶ Web Server (IIS) (Installed)
- Windows Deployment Services**

Description

Windows Deployment Services provides a simplified, secure means of rapidly and remotely deploying Windows operating systems to computers over the network.

< Previous

Next >

Install

Cancel

Add Roles and Features Wizard



Select features

DESTINATION SERVER
WIN-R44O8GIKKQK.DeanLashley.com

Before You Begin

Installation Type

Server Selection

Server Roles

Features

WDS

Role Services

Confirmation

Results

Select one or more features to install on the selected server.

Features

- .NET Framework 3.5 Features (Installed)
- .NET Framework 4.5 Features (Installed)
- Background Intelligent Transfer Service (BITS)
- BitLocker Drive Encryption
- BitLocker Network Unlock
- BranchCache (Installed)
- Client for NFS
- Data Center Bridging
- Enhanced Storage
- Failover Clustering (Installed)
- Group Policy Management (Installed)
- Ink and Handwriting Services (Installed)
- Internet Printing Client
- IP Address Management (IPAM) Server

Description

.NET Framework 3.5 combines the power of the .NET Framework 2.0 APIs with new technologies for building applications that offer appealing user interfaces, protect your customers' personal identity information, enable seamless and secure communication, and provide the ability to model a range of business processes.

< Previous

Next >

Install

Cancel



Add Roles and Features Wizard



WDS

DESTINATION SERVER
WIN-R44O8GIKKQK.DeanLashley.com

Before You Begin

Installation Type

Server Selection

Server Roles

Features

WDS

Role Services

Confirmation

Results

You can use Windows Deployment Services to install and configure Microsoft Windows operating system remotely on computers that are PXE-enabled. Windows Deployment Services replaces Remote Installation Services (RIS) and assists with the rapid adoption and deployment of Windows. The Windows Deployment Services MMC snap-in allows you to manage all aspects of Windows Deployment Services. Windows Deployment Services also provides end-users with an experience that is consistent with Windows Setup.

Things to note:

- Deployment Server requires that Active Directory Domain Services, DHCP, and DNS services are available on your network. Transport Server does not require any additional roles or services. Both of these services require an NTFS partition for the file store.
- Before you begin, you need to configure Windows Deployment Services by running either the Windows Deployment Services Configuration Wizard or WDSUtil.exe. You will also need to add at least one boot image and one install image to the image store.
- To install Windows operating systems from a Windows Deployment Services server, either the client computers must be PXE-enabled, or you must use the Windows Server 2008 R2 version of Windows Preinstallation Environment (Windows PE).

[Overview of Windows Deployment Services](#)

< Previous

Next >

Install

Cancel



Add Roles and Features Wizard



Select role services

DESTINATION SERVER
WIN-R44O8GIKKQK.DeanLashley.com

Before You Begin

Installation Type

Server Selection

Server Roles

Features

WDS

Role Services

Confirmation

Results

Select the role services to install for Windows Deployment Services

Role services

- Deployment Server**
- Transport Server

Description

Deployment Server provides the full functionality of Windows Deployment Services, which you can use to configure and remotely install Windows operating systems. With Windows Deployment Services, you can create and customize images and then use them to reimage computers. Deployment Server is dependent on the core parts of Transport Server.

< Previous

Next >

Install

Cancel



Add Roles and Features Wizard



Confirm installation selections

DESTINATION SERVER
WIN-R44O8GIKKQK.DeanLashley.com

Before You Begin

Installation Type

Server Selection

Server Roles

Features

WDS

Role Services

Confirmation

Results

To install the following roles, role services, or features on selected server, click Install.

Restart the destination server automatically if required

Optional features (such as administration tools) might be displayed on this page because they have been selected automatically. If you do not want to install these optional features, click Previous to clear their check boxes.

Remote Server Administration Tools
 Role Administration Tools
 Windows Deployment Services Tools

Windows Deployment Services
 Deployment Server
 Transport Server

[Export configuration settings](#)
[Specify an alternate source path](#)

< Previous

Next >

Install

Cancel



Add Roles and Features Wizard



Installation progress

DESTINATION SERVER
WIN-R44O8GIKKQK.DeanLashley.com

Before You Begin

Installation Type

Server Selection

Server Roles

Features


WDS

Role Services

Confirmation

Results

View installation progress

 Feature installation

Installation succeeded on WIN-R44O8GIKKQK.DeanLashley.com.

Remote Server Administration Tools
Role Administration Tools
Windows Deployment Services Tools

Windows Deployment Services
Deployment Server
Transport Server



You can close this wizard without interrupting running tasks. View task progress or open this page again by clicking Notifications in the command bar, and then Task Details.

[Export configuration settings](#)

< Previous

Next >

Close

Cancel