

WDS



- Windows Deployment Services
  - Servers
    - WIN-R4408GIKKQK.DeanLashley.
  - Active Directory Prestaged Devices

## Windows Deployment Services

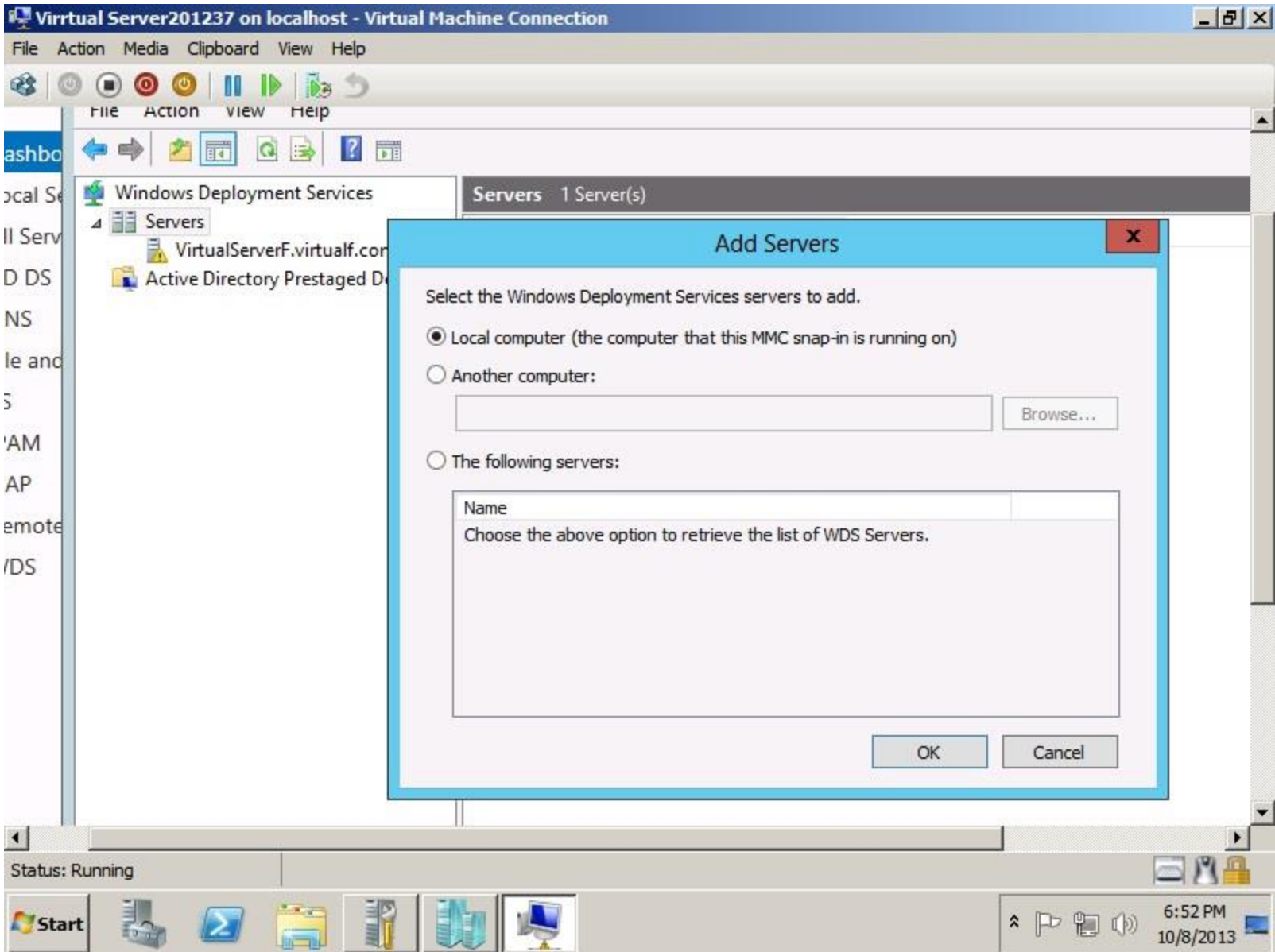


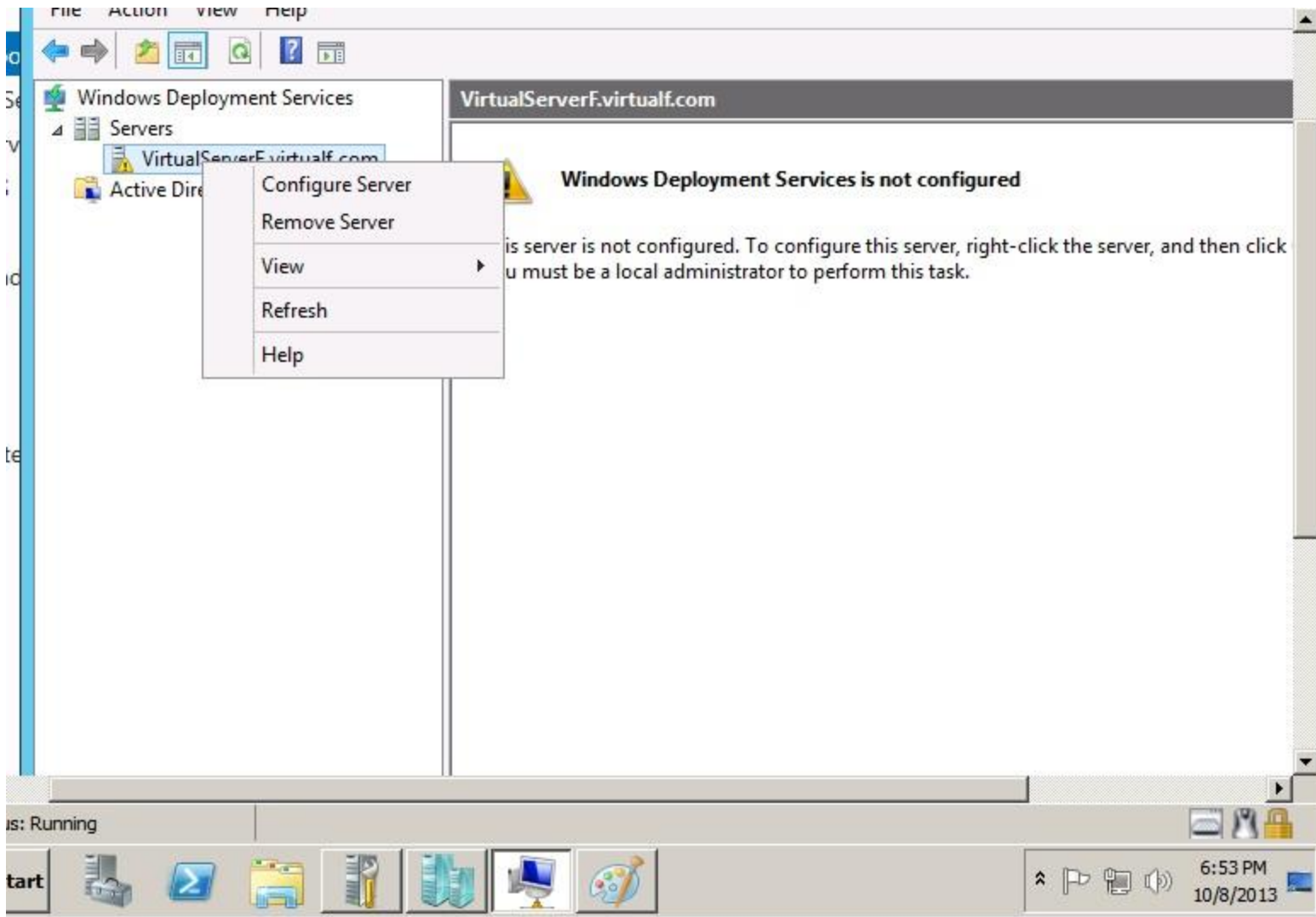
### Windows Deployment Services

Windows Deployment Services enables you to deploy Windows operating systems over the network.

This Microsoft Management Console (MMC) snap-in enables you to manage and configure Windows Deployment Services. You can perform tasks including adding images, configuring multicast transmissions, and configuring server properties. You can also manage your server using the WDSUTIL command-line tool. For more information, press F1.

To manage a server from this snap-in, you must add it first. To add a server, right-click the Servers node, and then click Add Server.





You can use this wizard to configure Windows Deployment Services. Once the server is configured, you will need to add at least one boot image and one install image to the server before you will be able to install an operating system.

**Before you begin, ensure that the following requirements are met:**

- The server is a member of an Active Directory Domain Services (AD DS) domain, or a domain controller for an AD DS domain. If the server supports Standalone mode, it can be configured without having a dependency on Active Directory.
- There is an active DHCP server on the network. This is because Windows Deployment Services uses Pre-Boot Execution Environment (PXE), which relies on DHCP for IP addressing.
- There is an active DNS server on your network.
- This server has an NTFS file system partition on which to store images.

To continue, click Next.

< Back

Next >

Cancel

and then click

us: Running

Start



6:54 PM  
10/8/2013



Select one of the following options:

- Integrated with Active Directory  
This server is a member of an Active Directory Domain Services (AD DS) domain, or a domain controller for an AD DS domain.
- Standalone server  
Configure the server so that it is standalone, operating independently of Active Directory.

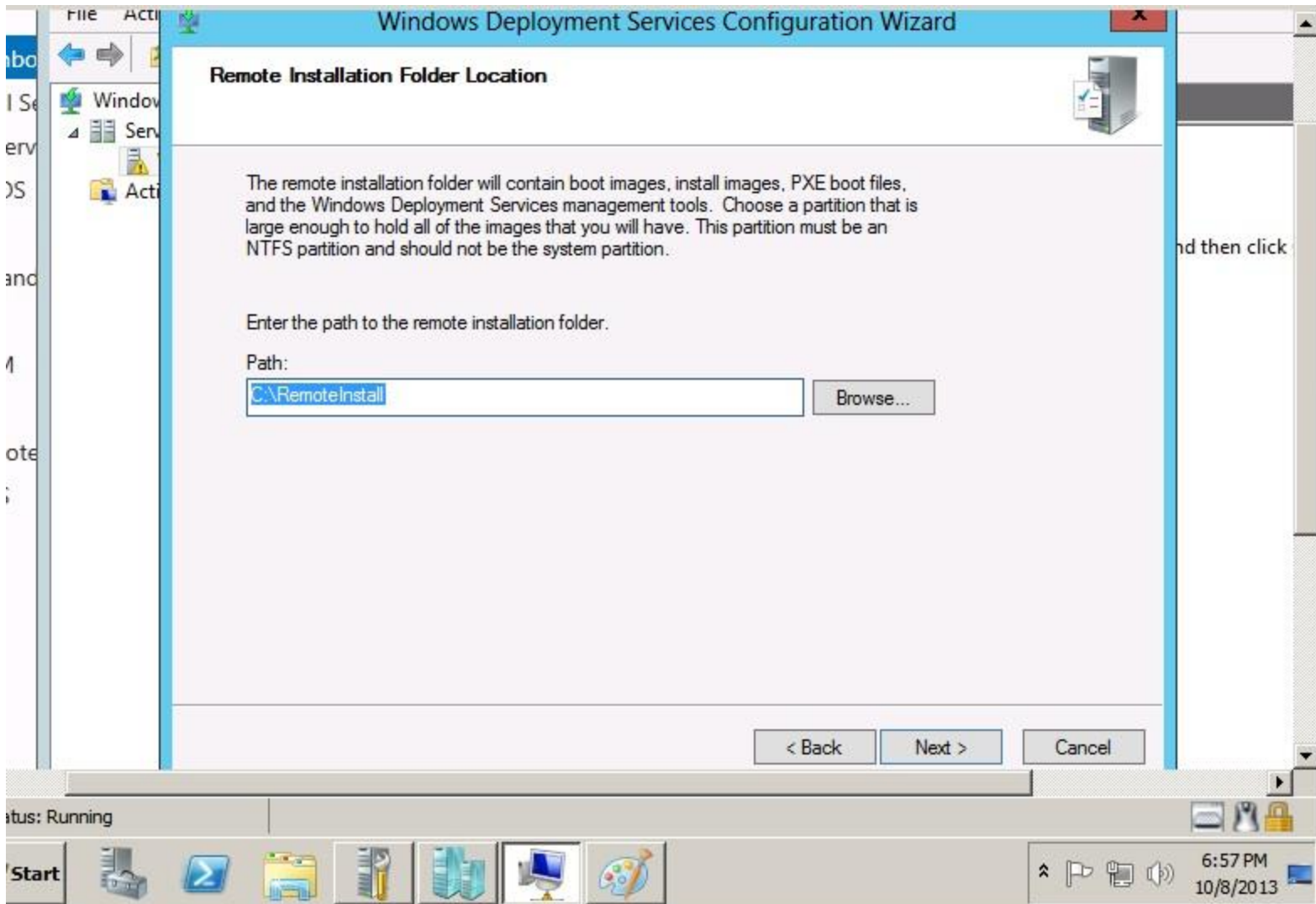
and then click

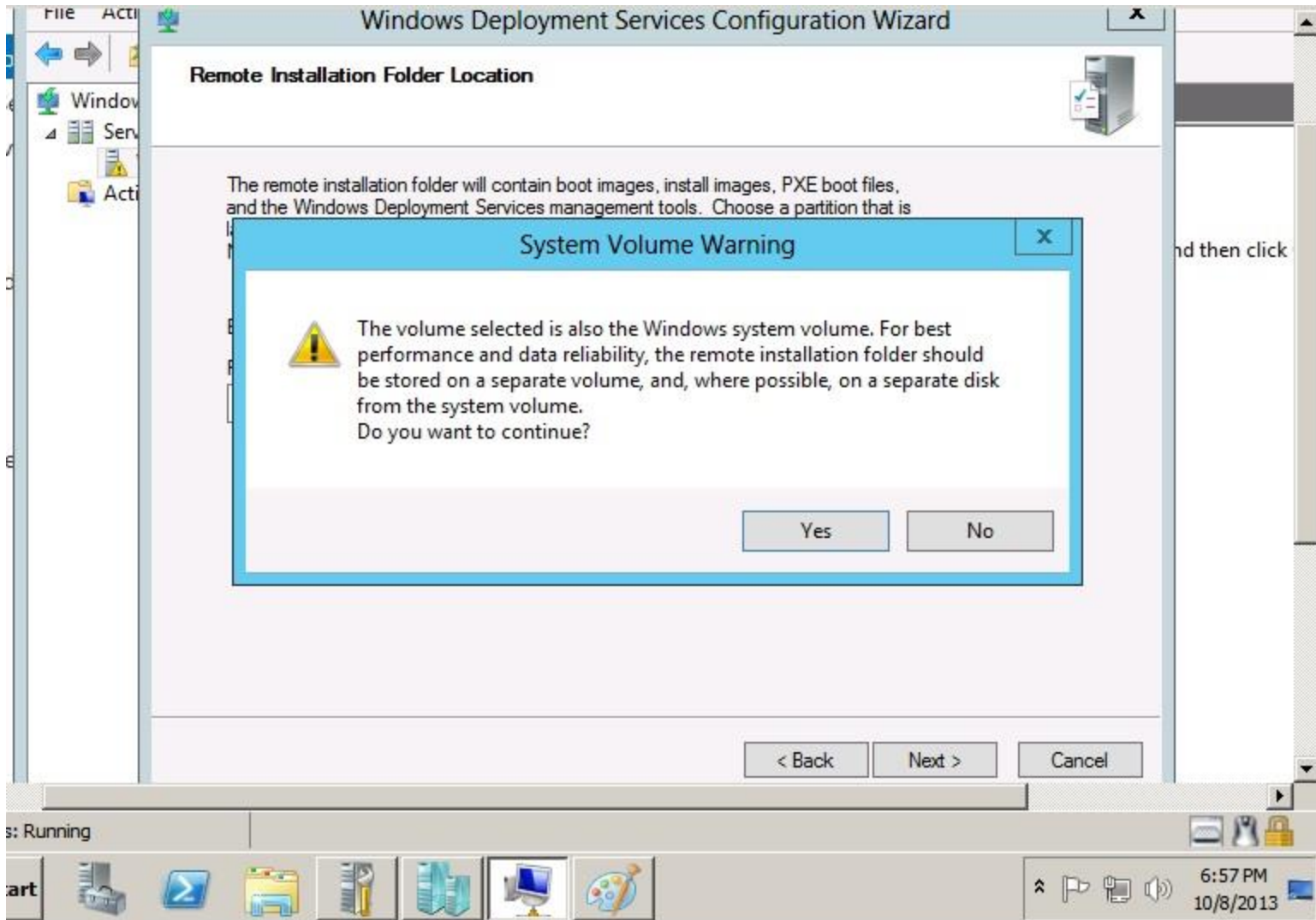
< Back    Next >    Cancel

tus: Running



System tray area containing icons for network, volume, and power, along with the date and time: 6:55 PM 10/8/2013





### Remote Installation Folder Location

The remote installation folder will contain boot images, install images, PXE boot files, and the Windows Deployment Services management tools. Choose a partition that is

#### System Volume Warning



The volume selected is also the Windows system volume. For best performance and data reliability, the remote installation folder should be stored on a separate volume, and, where possible, on a separate disk from the system volume. Do you want to continue?

Yes

No

< Back

Next >

Cancel

s: Running

Start

6:57 PM  
10/8/2013



### Proxy DHCP Server

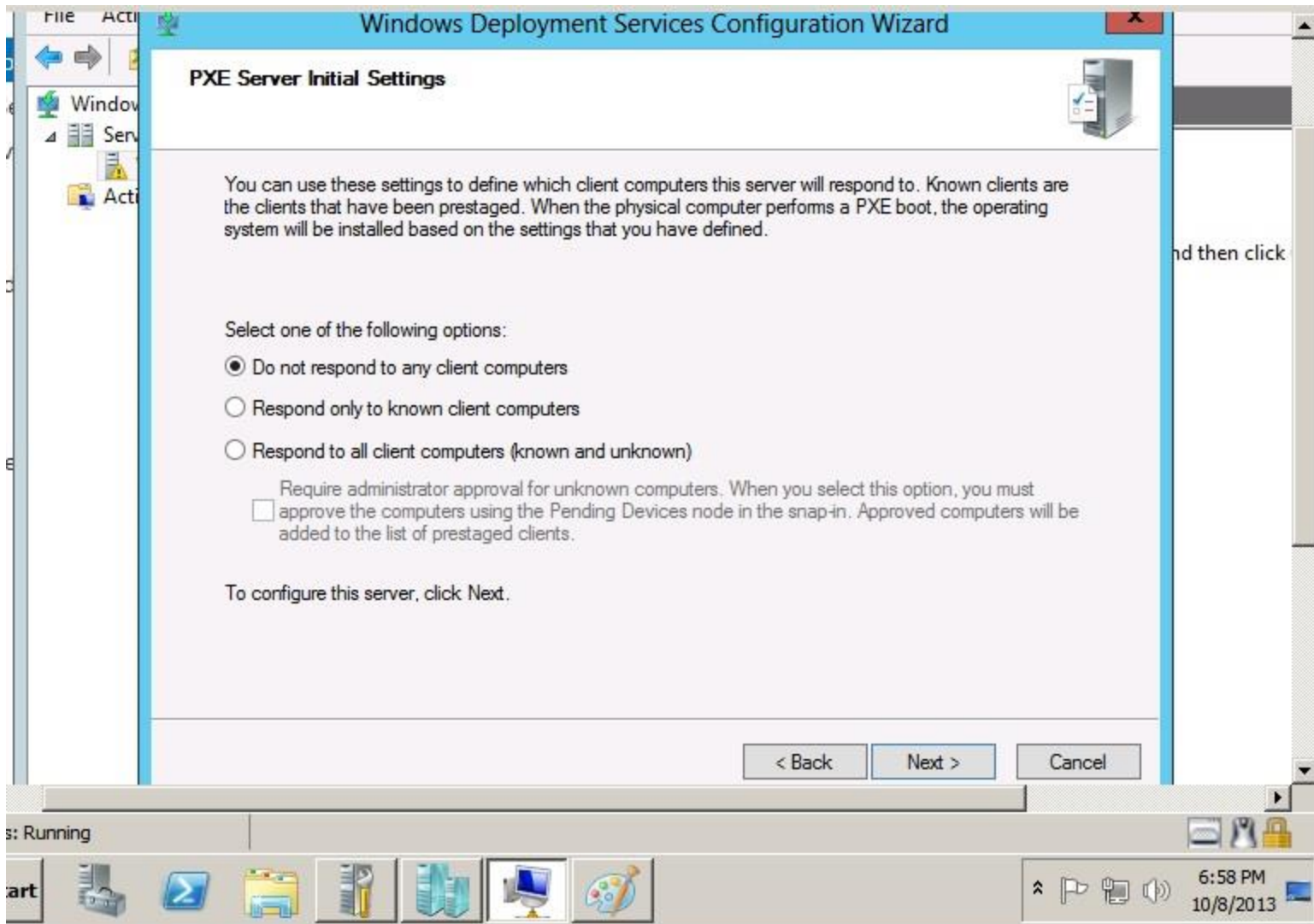


If Dynamic Host Configuration Protocol (DHCP) is running on this server, check both of the following check boxes and use DHCP tools to add appropriate PXE options to all DHCP and DHCPv6 scopes.

If a non-Microsoft DHCP server is running on this server, then check the first box and manually configure DHCP option 60 and DHCPv6 Vendor Class for Proxy DHCP.

The Windows Deployment Services Configuration Wizard detected Microsoft DHCP service running on the server. Please select from the following options:

- Do not listen on DHCP and DHCPv6 ports
- Configure DHCP options for Proxy DHCP



### PXE Server Initial Settings

You can use these settings to define which client computers this server will respond to. Known clients are the clients that have been prestaged. When the physical computer performs a PXE boot, the operating system will be installed based on the settings that you have defined.

Select one of the following options:

- Do not respond to any client computers
- Respond only to known client computers
- Respond to all client computers (known and unknown)

Require administrator approval for unknown computers. When you select this option, you must approve the computers using the Pending Devices node in the snap-in. Approved computers will be added to the list of prestaged clients.

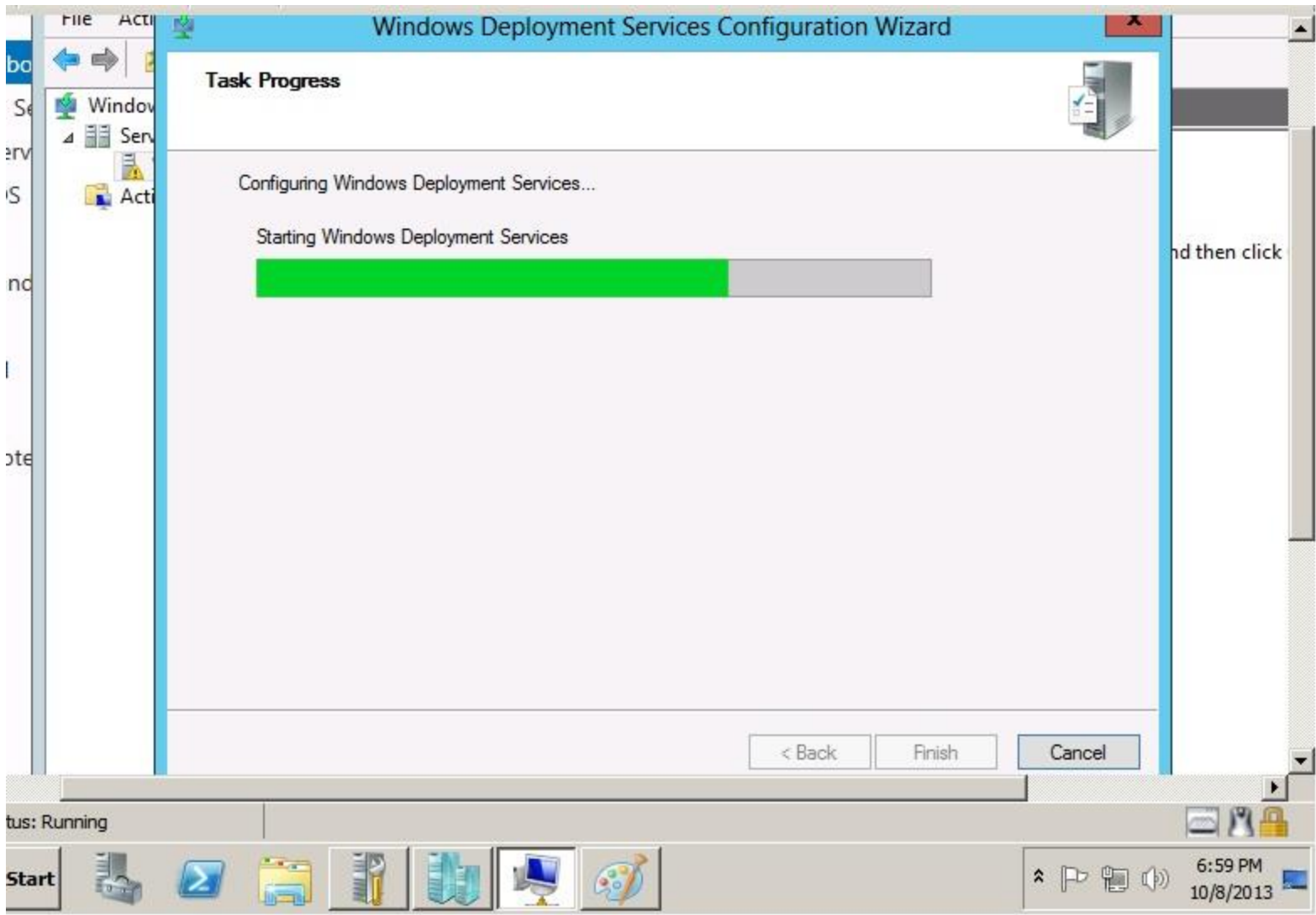
To configure this server, click Next.

< Back    Next >    Cancel

s: Running



System tray area containing icons for network, volume, and power, along with the time and date: 6:58 PM, 10/8/2013.



**Task Progress**

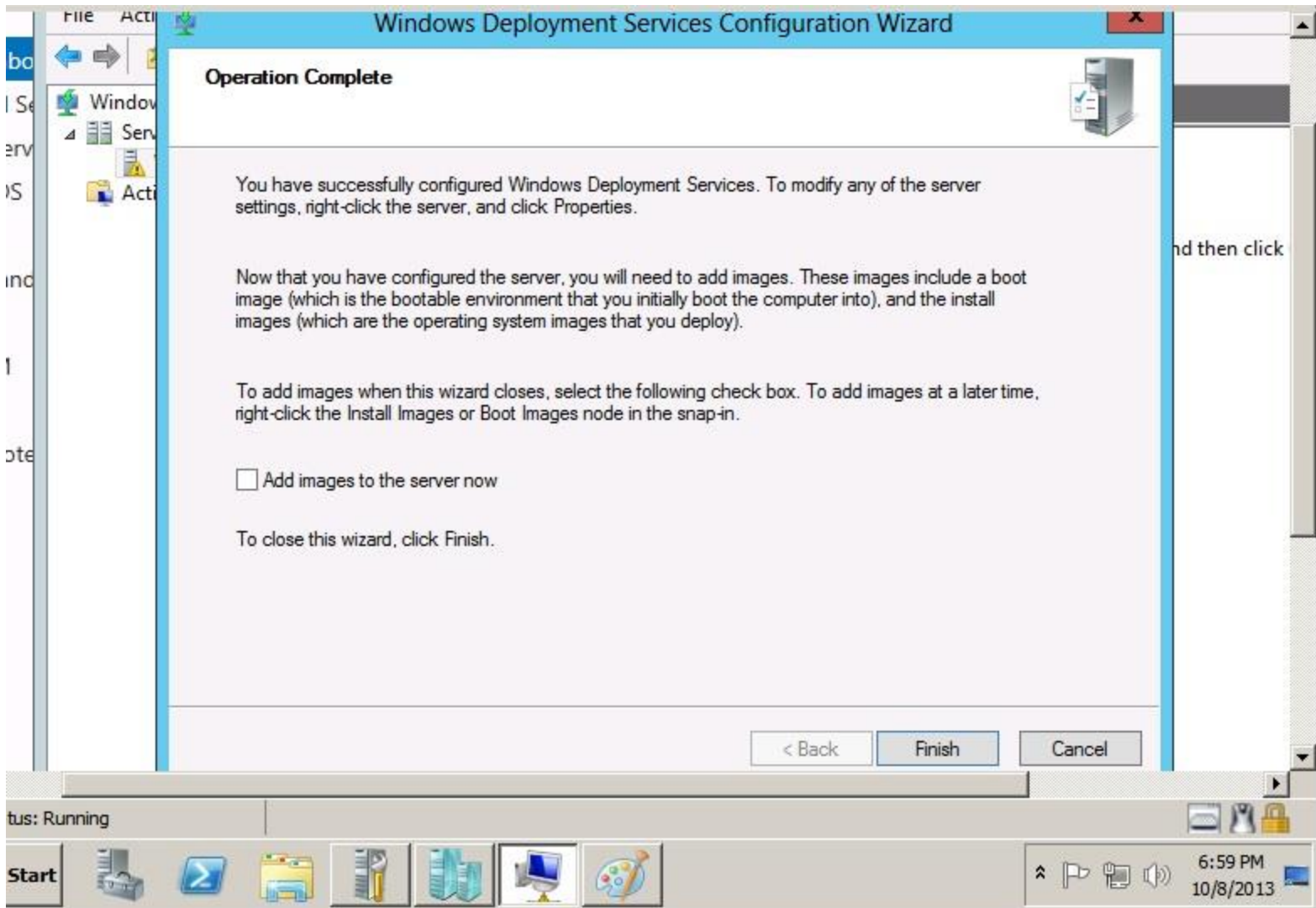
Configuring Windows Deployment Services...

Starting Windows Deployment Services



< Back    Finish    Cancel

and then click



### Operation Complete

You have successfully configured Windows Deployment Services. To modify any of the server settings, right-click the server, and click Properties.

Now that you have configured the server, you will need to add images. These images include a boot image (which is the bootable environment that you initially boot the computer into), and the install images (which are the operating system images that you deploy).

To add images when this wizard closes, select the following check box. To add images at a later time, right-click the Install Images or Boot Images node in the snap-in.

Add images to the server now

To close this wizard, click Finish.

< Back

Finish

Cancel

tus: Running

Start

6:59 PM  
10/8/2013