

WDS DEPLOYMENT

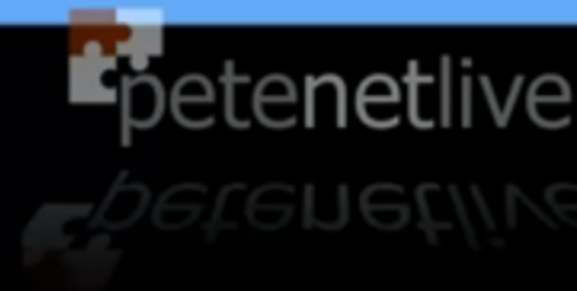
SERVER 2012

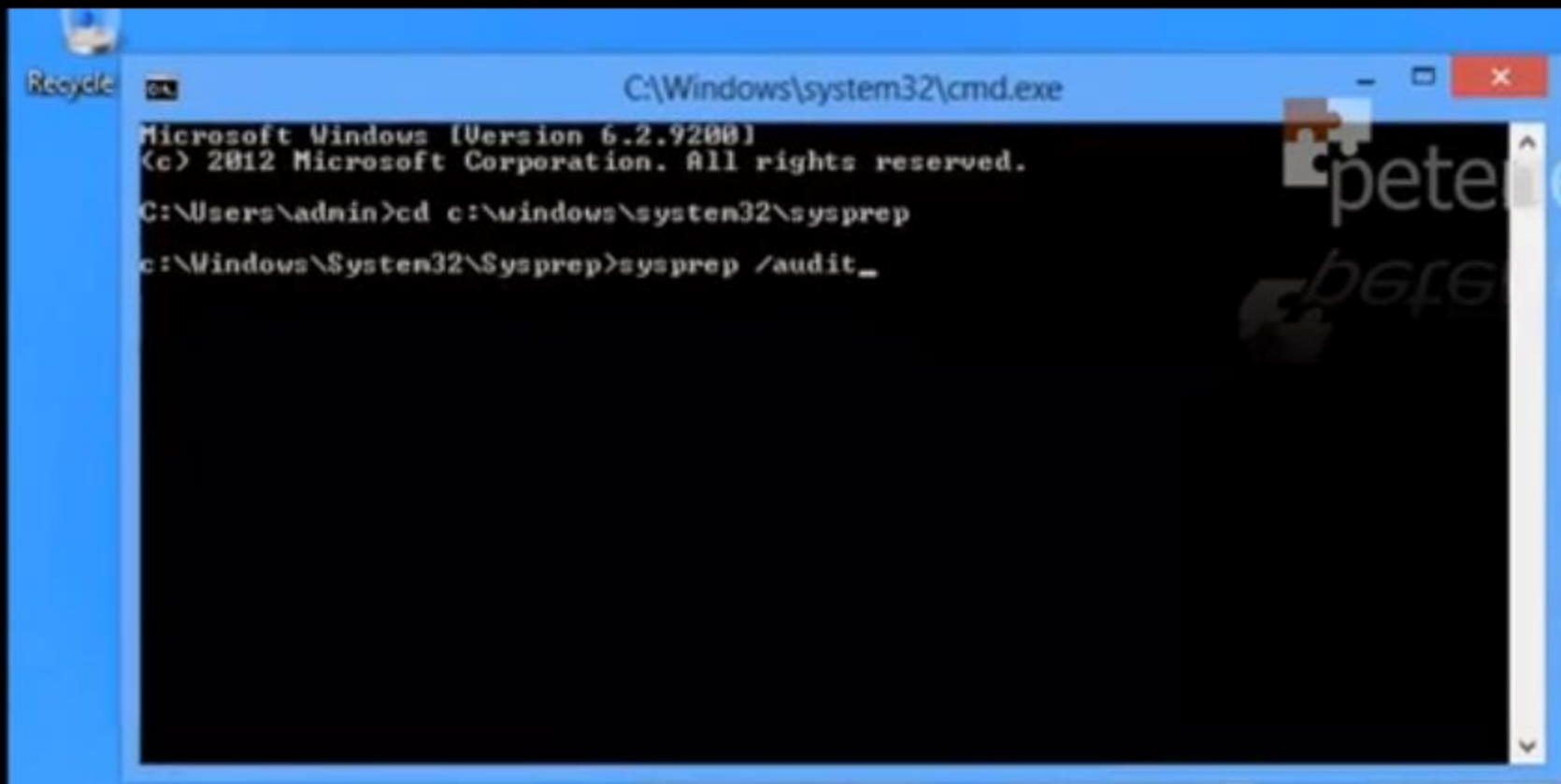
CA

C:\Windows\system32\cmd.exe

Microsoft Windows [Version 6.2.9200]
(c) 2012 Microsoft Corporation. All rights reserved.

C:\Users\admin>cd c:\windows\system32\sysprep

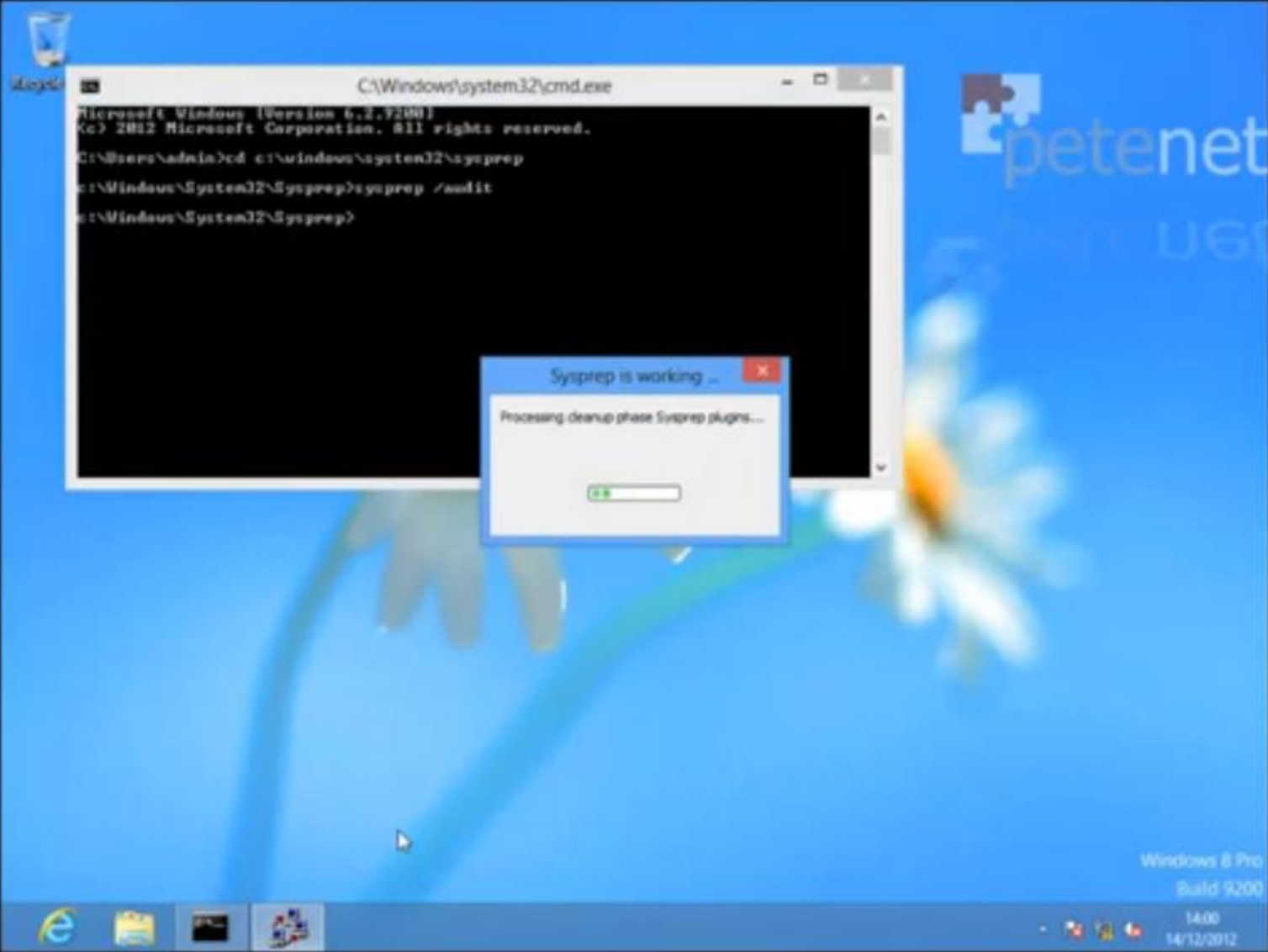




```
C:\Windows\system32\cmd.exe
Microsoft Windows [Version 6.2.9200]
(c) 2012 Microsoft Corporation. All rights reserved.

C:\Users\admin>cd c:\windows\system32\sysprep
c:\Windows\System32\Sysprep>sysprep /audit_
```

peteretlive
b6fg



petenetlive
PUPUGUINE



System Preparation Tool 3.14 [X]

System Preparation Tool (Sysprep) prepares the machine for hardware independence and cleanup.

System Cleanup Action
Enter System Out-of-Box Experience (OOBE) [v]
 Generalize

Shutdown Options
Shutdown [v]

OK Cancel



Network boot from Intel E1000e
Copyright (C) 2003-2008 VMware, Inc.
Copyright (C) 1997-2008 Intel Corporation

CLIENT MAC ADDR: 00 50 56 B3 56 48 GUID: 4233A699-9ABB-FF8C-47D2-48BED76AF973
DHCP...↓



petenetlive





petenetlive



Network boot from Intel E1000e
Copyright (C) 2003-2008 VMware, Inc.
Copyright (C) 1997-2008 Intel Corporation

CLIENT MAC ADDR: 00 50 56 03 56 48 GUID: 4233A699-9A00-FF0C-47D2-40BE076AF973
CLIENT IP: 192.168.1.12 MASK: 255.255.255.0 DHCP IP: 192.168.1.2
GATEWAY IP: 192.168.1.254

Downloaded WDSMBP from 192.168.1.2 DC01.PKL.net

Press F12 for network service boot
Architecture: x64
Contacting Server: 192.168.1.2._

Windows Boot Manager (Server IP: 192.168.1.2)

Choose an operating system to start:

(Use the arrow keys to highlight your choice, then press ENTER.)

Install an Image

Capture an Image

To specify an advanced option for this choice, press F8.

Seconds until the highlighted choice will be started automatically: 28

ENTER=Choose

ESC=Exit

Windows Boot Manager (Server IP: 192.168.1.2)

Choose an operating system to start:

(Use the arrow keys to highlight your choice, then press ENTER.)

Install an Image

Capture an Image

To specify an advanced option for this choice, press F8.

ENTER=Choose

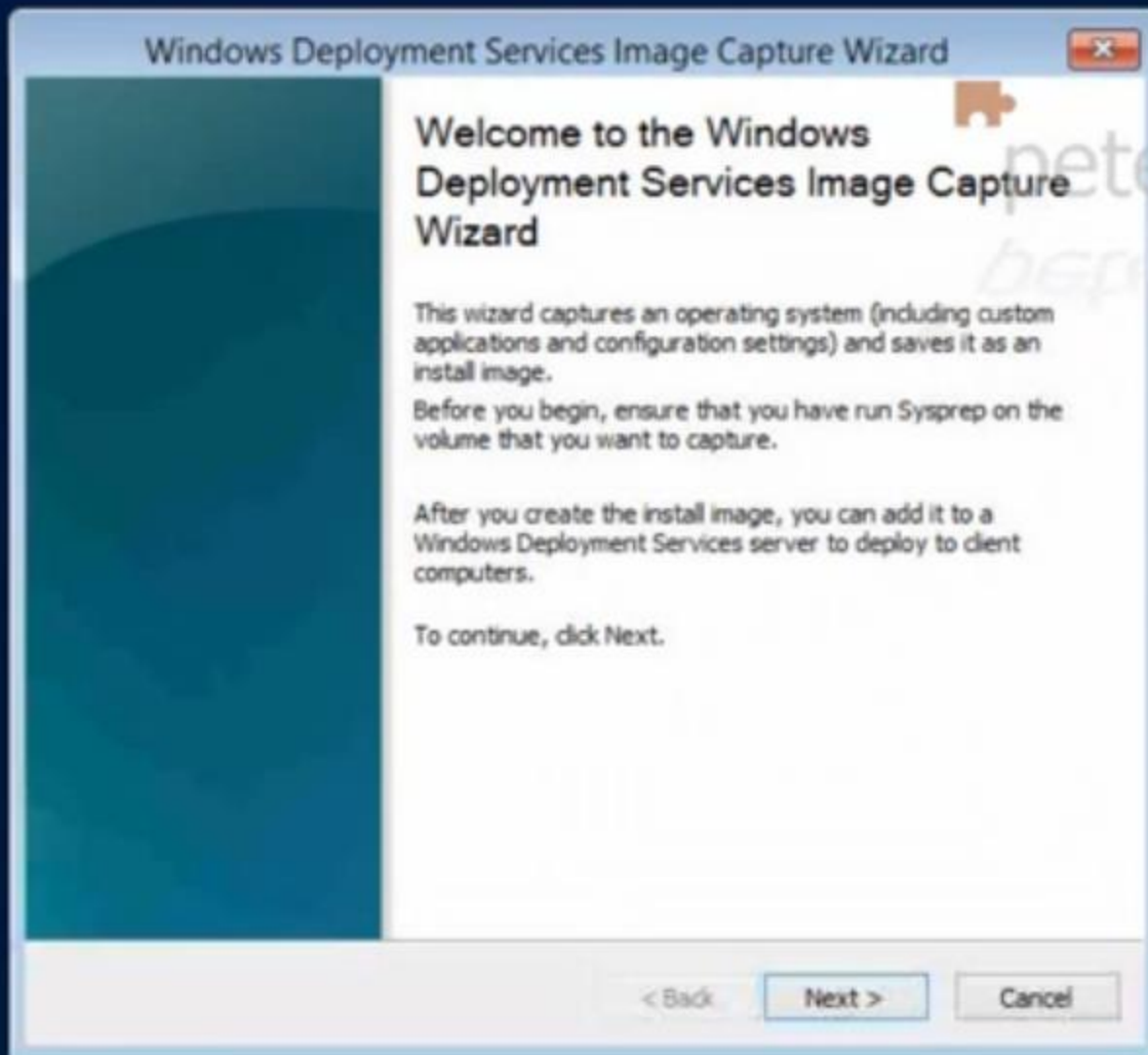
ESC=Exit



petenetlive

665UGF11N





Windows Deployment Services Image Capture Wizard

Directory to Capture

Enter the following information for this image. Note that you will only see volumes that contain operating systems that have been prepared with Sysprep.

Volume to capture:
D:\

Image name:
Windows8_v1

Image description:

< Back Next > Cancel

Windows Deployment Services Image Capture Wizard

New Image Location

Enter a local location where you want to save the install image. This ensures the image is not corrupted if there is a network malfunction.

Name and location:

Upload image to a Windows Deployment Services server (optional)

Server name:

Image Group name:

To create this image, click Next.

< Back Next > Cancel



petenelive
DEBUGGING



Windows Deployment Services Image Capture Wizard

New Image Location

Enter a local location where you want to save the install image. This ensures the image is not corrupted if there is a network malfunction.

Name and location:
D:\Win8.wim Browse...

Upload image to a Windows Deployment Services server (optional)

Server name:
192.168.1.2 Connect

Image Group name:
▼

To create this image, click Next.

< Back Next > Cancel

petenetlive
DEPLOYING

Windows Deployment Services Image Capture Wizard

New Image Location

Windows Security

Enter network password

Enter your password to connect to: 192.168.1.2

pnf/administrator

Password

Domain: pnf

Remember my credentials

Access is denied.

OK Cancel

< Back Next > Cancel

Windows Deployment Services Image Capture Wizard

New Image Location

Enter a local location where you want to save the install image. This ensures the image is not corrupted if there is a network malfunction.

Name and location:
D:\Win8.wim Browse...

Upload image to a Windows Deployment Services server (optional)

Server name:
192.168.1.2 Connect

Image Group name:
Deployment Group

To create this image, click Next.

< Back Next > Cancel


petenetlive
DEBUGGING

Windows Deployment Services Image Capture Wizard

Task Progress

Uploading image to WDS server ...

Percent complete: 62%




<Back Finish Cancel

The image shows a Windows Deployment Services Image Capture Wizard dialog box. The title bar reads "Windows Deployment Services Image Capture Wizard". The main content area is titled "Task Progress" and displays the text "Uploading image to WDS server ...". Below this, it indicates "Percent complete: 62%". A horizontal progress bar is shown, with the first 62% of the bar filled with green and the remaining 38% in grey. At the bottom of the dialog, there are three buttons: "<Back", "Finish", and "Cancel". The "Cancel" button is highlighted with a blue border. A mouse cursor is visible at the bottom center of the screen.

Windows Deployment Services Image Capture Wizard

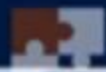
Task Progress

The operation is complete.



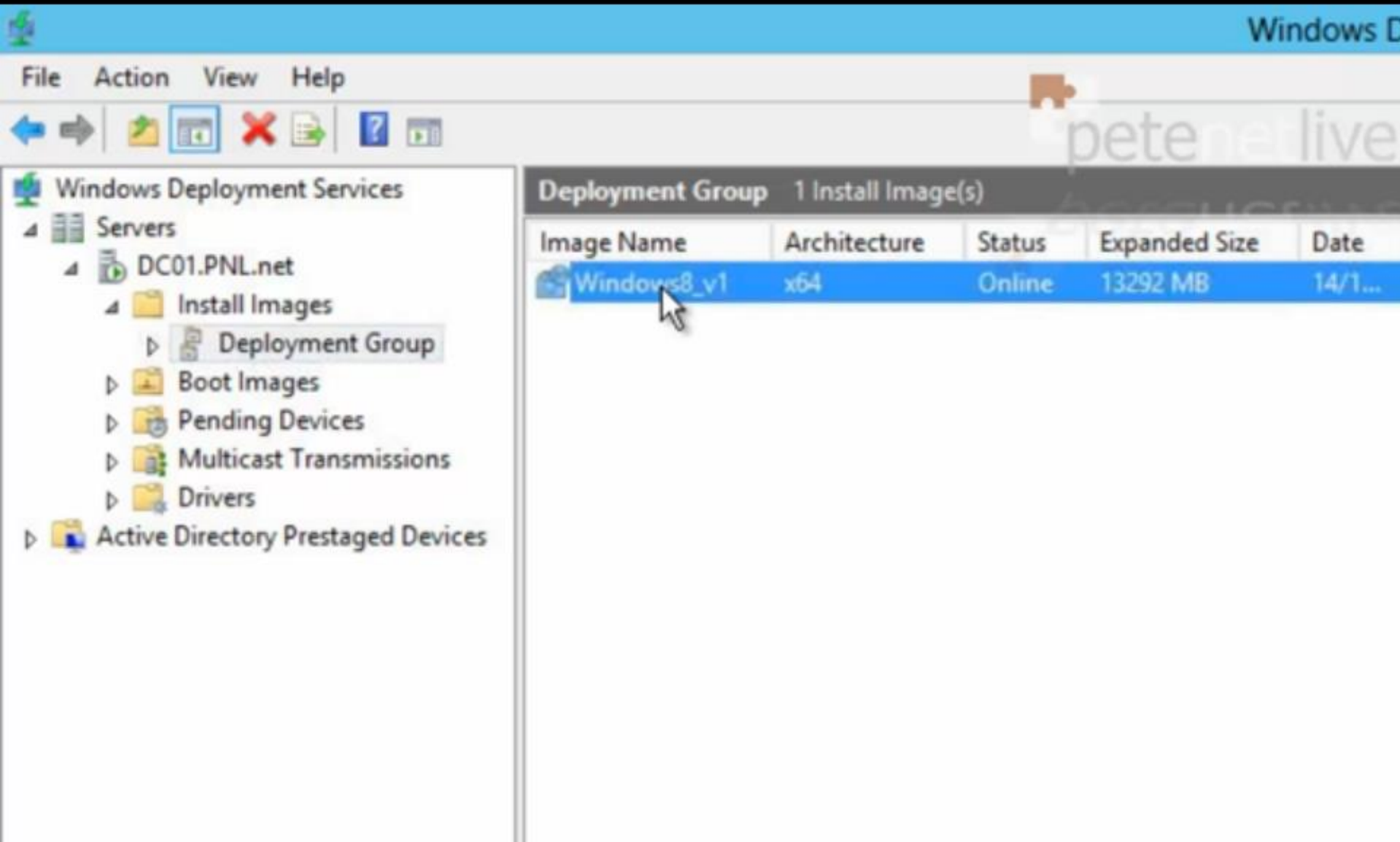
The install image was created successfully.

<Back Finish Cancel



penetlive
DEFSUGFIVE





The screenshot shows the Windows Deployment Services (WDS) console in Windows Server 2012. The interface is split into two main panes. The left pane shows a tree view of the WDS configuration for the server 'DC01.PNL.net'. The right pane displays a table of deployment images.

Windows Deployment Services

Servers

- DC01.PNL.net
 - Install Images
 - Deployment Group
 - Boot Images
 - Pending Devices
 - Multicast Transmissions
 - Drivers
 - Active Directory Prestaged Devices

Deployment Group 1 Install Image(s)

Image Name	Architecture	Status	Expanded Size	Date
Windows8_v1	x64	Online	13292 MB	14/1...

The 'Windows8_v1' image is highlighted with a mouse cursor. A watermark 'pete n e live' is visible in the top right corner of the console area.

<http://www.youtube.com/watch?v=tqz0BjenUQU>