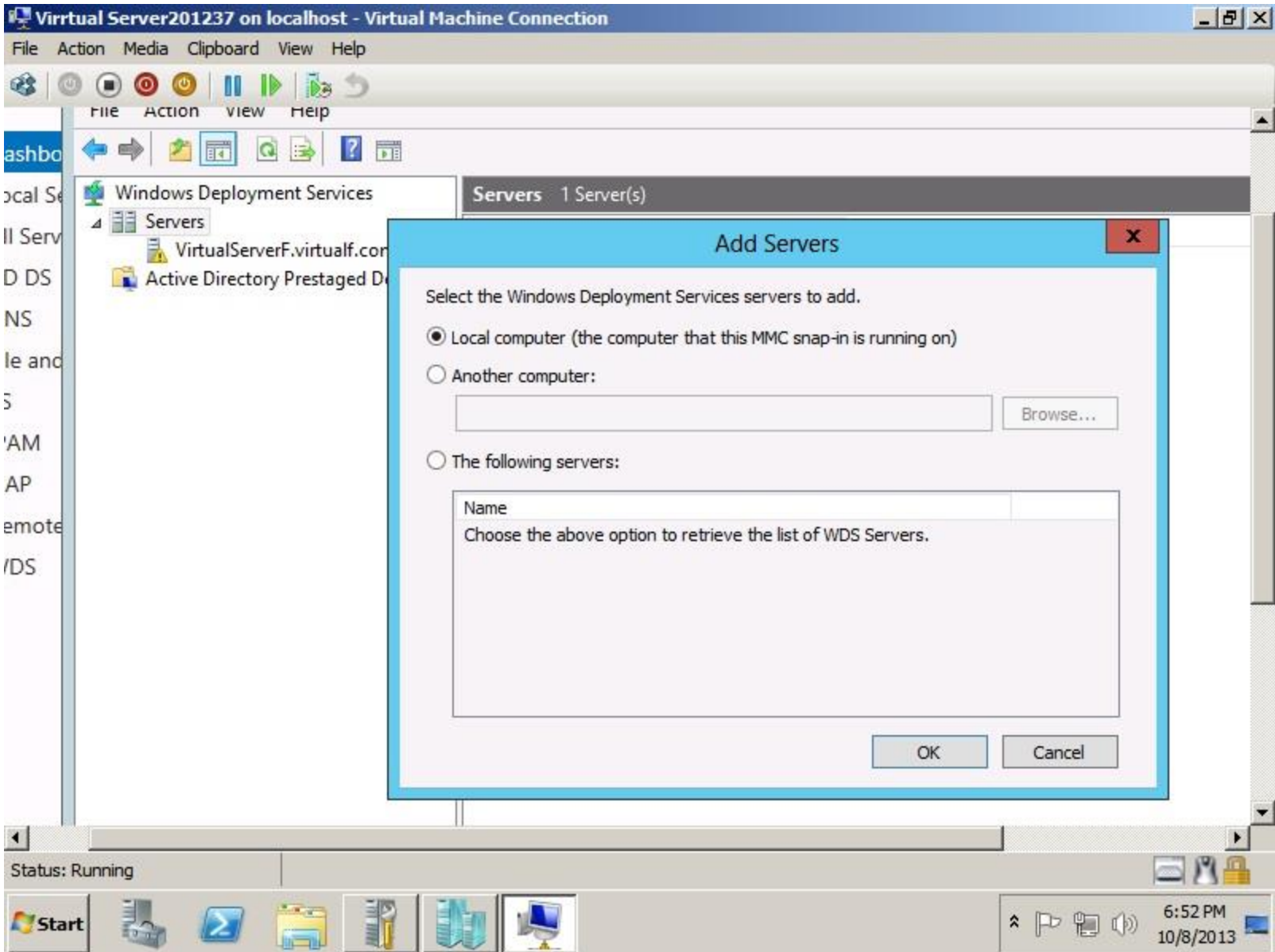
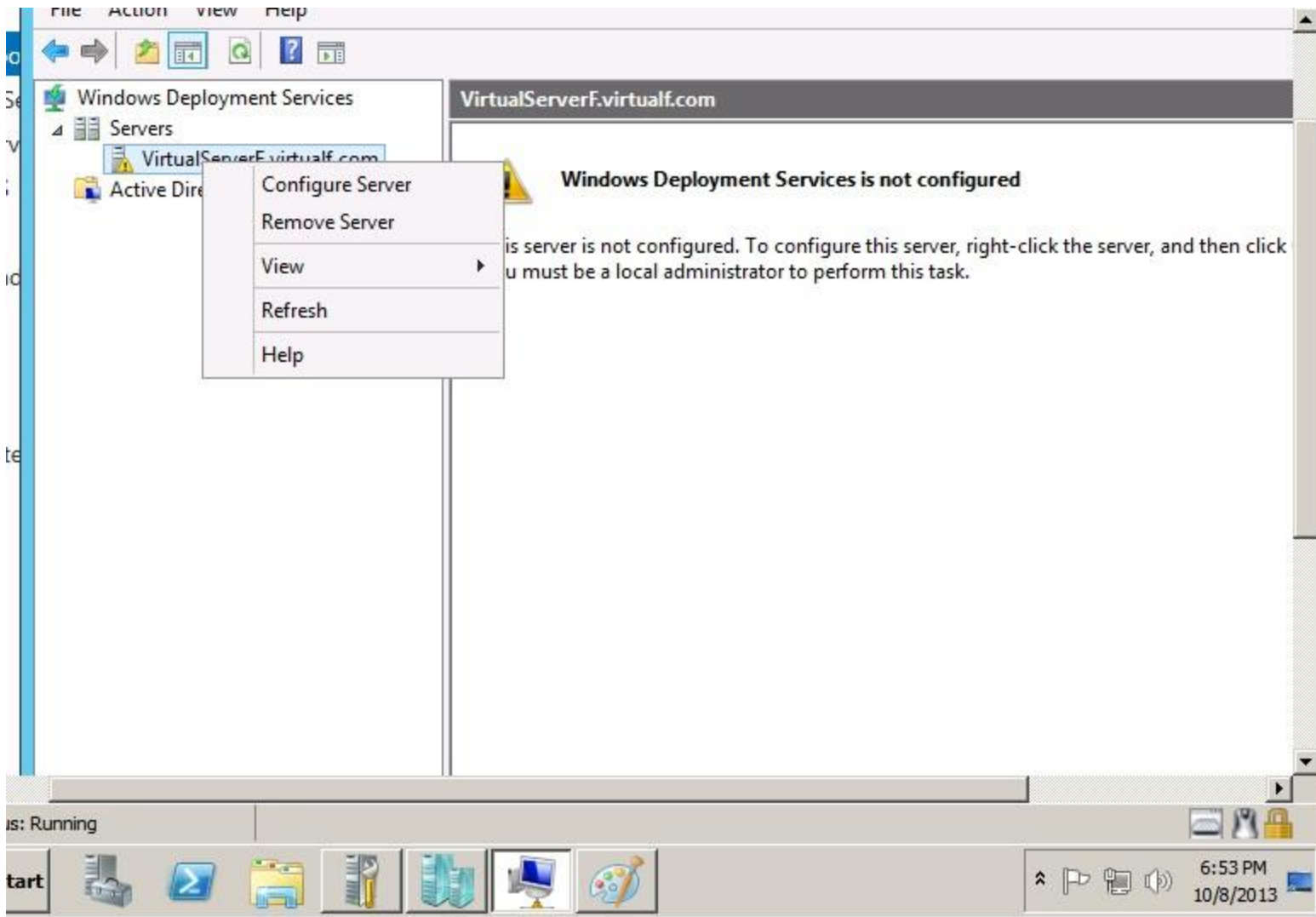


WDS





File Action view Help

Windows Deployment Services

Servers

VirtualServerF.virtualf.com

Active Directory

Configure Server

Remove Server

View

Refresh

Help

VirtualServerF.virtualf.com

**Windows Deployment Services is not configured**

This server is not configured. To configure this server, right-click the server, and then click the Configure Server link. You must be a local administrator to perform this task.

is: Running

Start

6:53 PM  
10/8/2013

You can use this wizard to configure Windows Deployment Services. Once the server is configured, you will need to add at least one boot image and one install image to the server before you will be able to install an operating system.

**Before you begin, ensure that the following requirements are met:**

- The server is a member of an Active Directory Domain Services (AD DS) domain, or a domain controller for an AD DS domain. If the server supports Standalone mode, it can be configured without having a dependency on Active Directory.
- There is an active DHCP server on the network. This is because Windows Deployment Services uses Pre-Boot Execution Environment (PXE), which relies on DHCP for IP addressing.
- There is an active DNS server on your network.
- This server has an NTFS file system partition on which to store images.

To continue, click Next.

< Back

Next >

Cancel

and then click

us: Running

Start



6:54 PM  
10/8/2013





Select one of the following options:

- Integrated with Active Directory  
This server is a member of an Active Directory Domain Services (AD DS) domain, or a domain controller for an AD DS domain.
- Standalone server  
Configure the server so that it is standalone, operating independently of Active Directory.

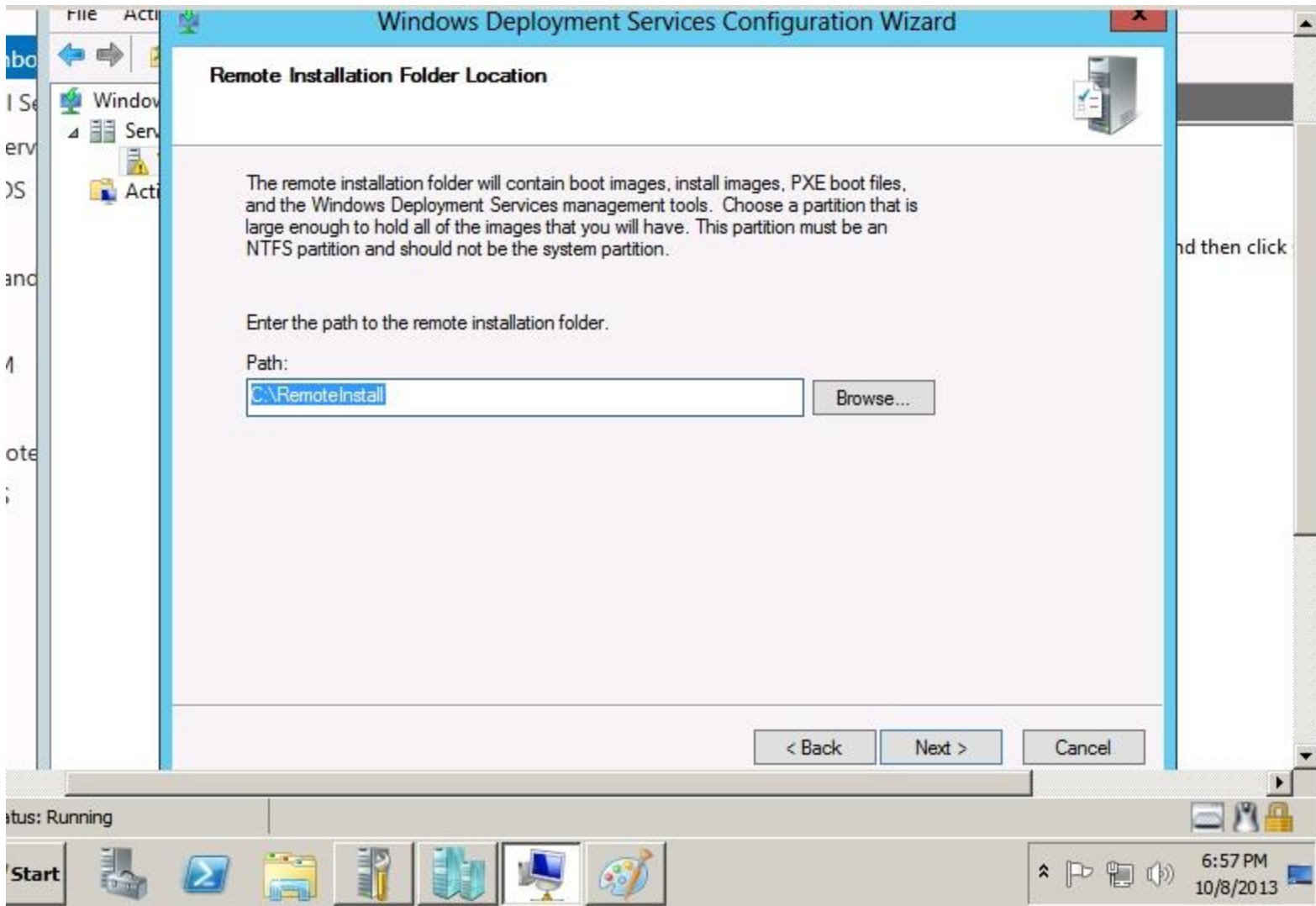
and then click

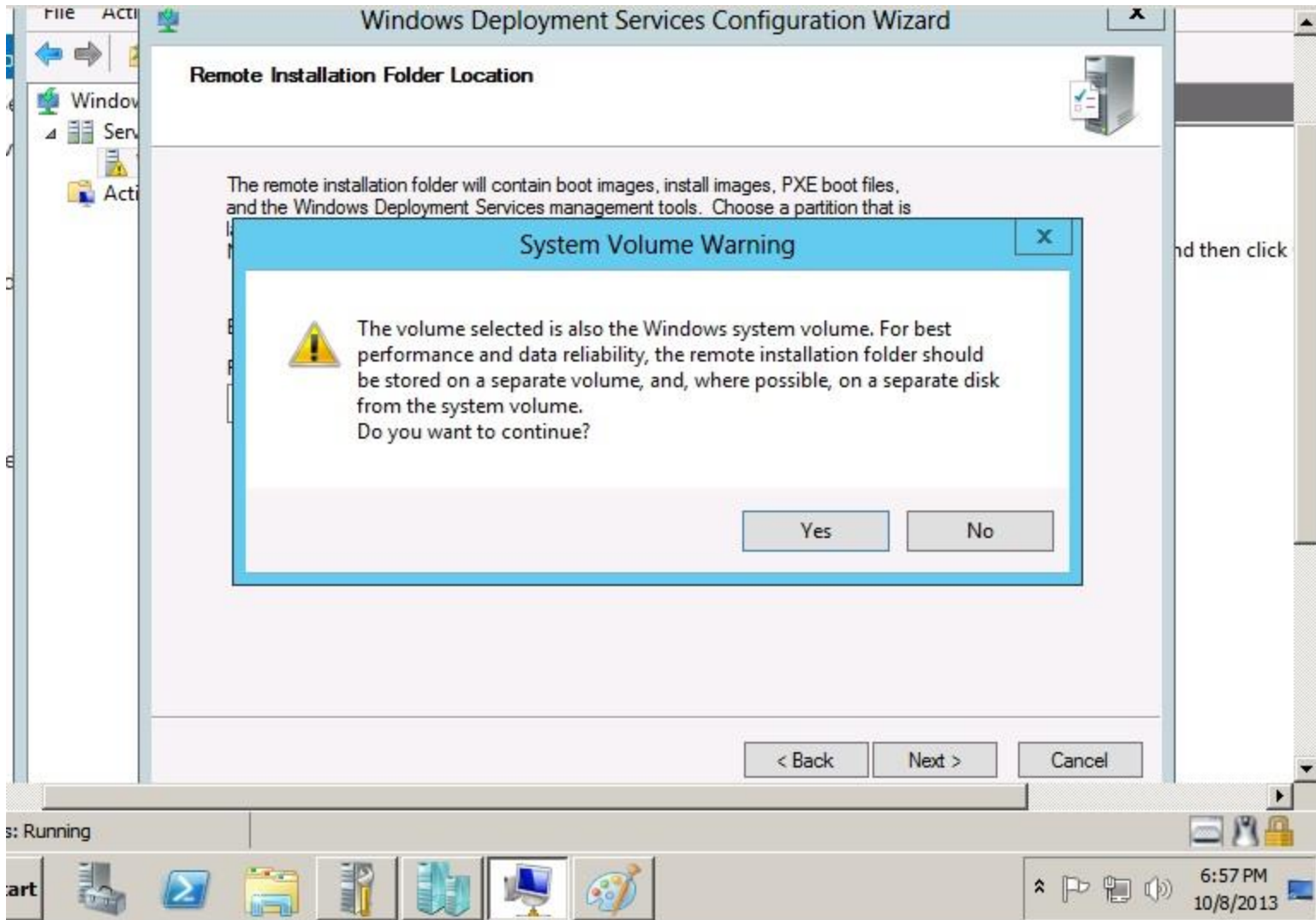
< Back    Next >    Cancel

tus: Running



System tray area containing icons for network, volume, and power, along with the date and time: 6:55 PM 10/8/2013





### Remote Installation Folder Location

The remote installation folder will contain boot images, install images, PXE boot files, and the Windows Deployment Services management tools. Choose a partition that is

#### System Volume Warning



The volume selected is also the Windows system volume. For best performance and data reliability, the remote installation folder should be stored on a separate volume, and, where possible, on a separate disk from the system volume. Do you want to continue?

Yes

No

< Back

Next >

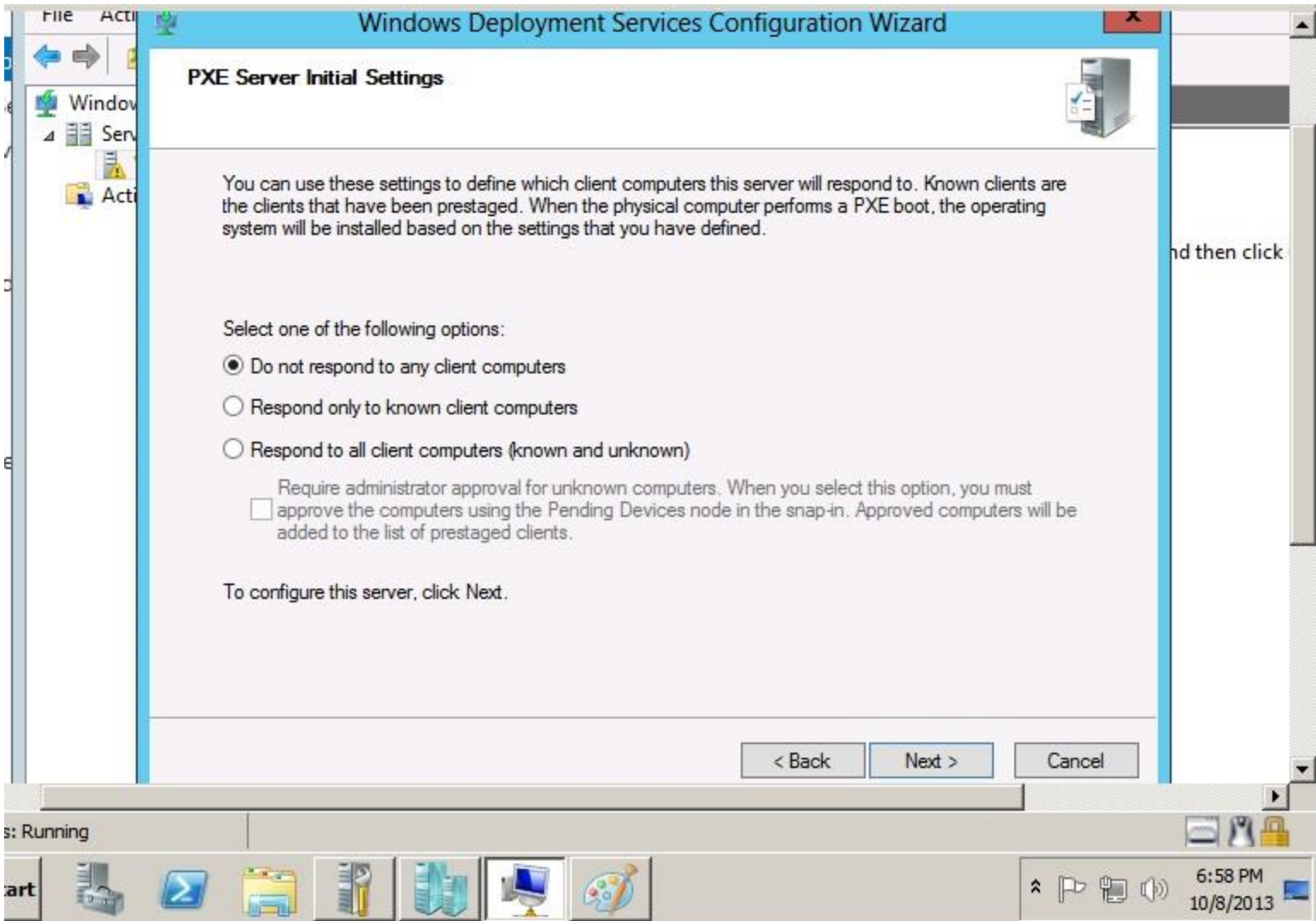
Cancel

s: Running

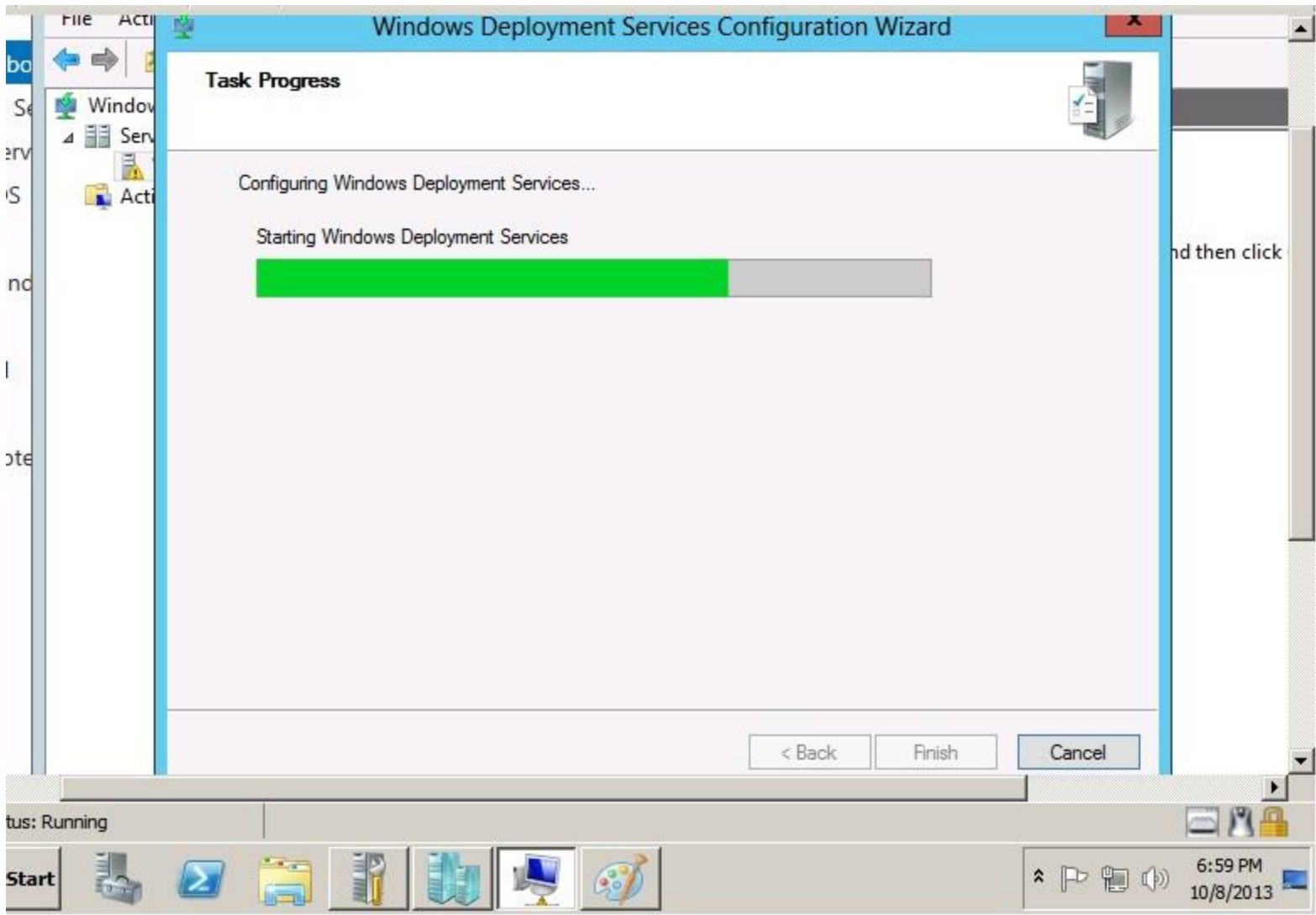


6:57 PM  
10/8/2013









**Task Progress**

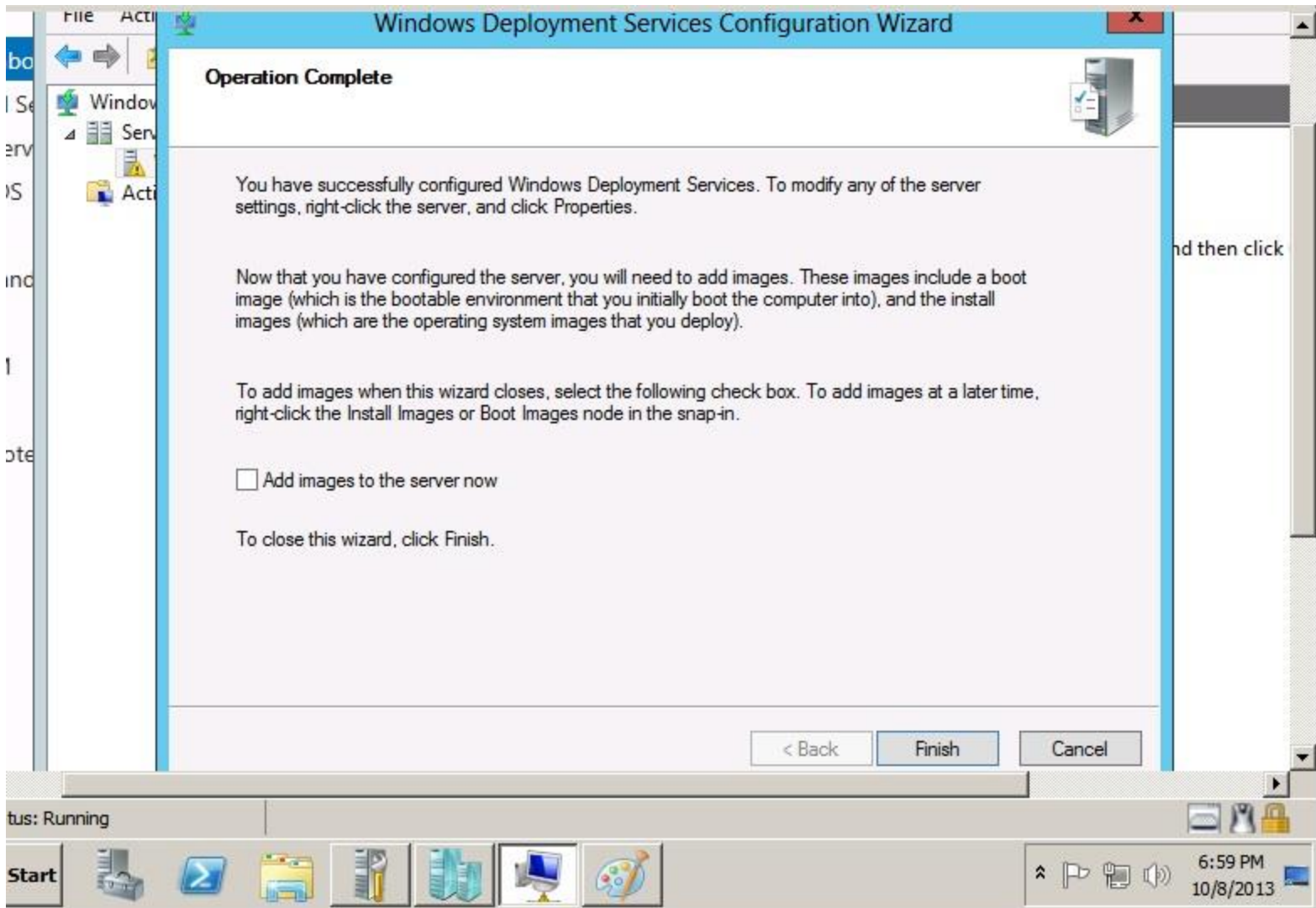
Configuring Windows Deployment Services...

Starting Windows Deployment Services



< Back    Finish    Cancel

and then click



### Operation Complete

You have successfully configured Windows Deployment Services. To modify any of the server settings, right-click the server, and click Properties.

Now that you have configured the server, you will need to add images. These images include a boot image (which is the bootable environment that you initially boot the computer into), and the install images (which are the operating system images that you deploy).

To add images when this wizard closes, select the following check box. To add images at a later time, right-click the Install Images or Boot Images node in the snap-in.

Add images to the server now

To close this wizard, click Finish.

< Back

Finish

Cancel

tus: Running

Start



6:59 PM  
10/8/2013