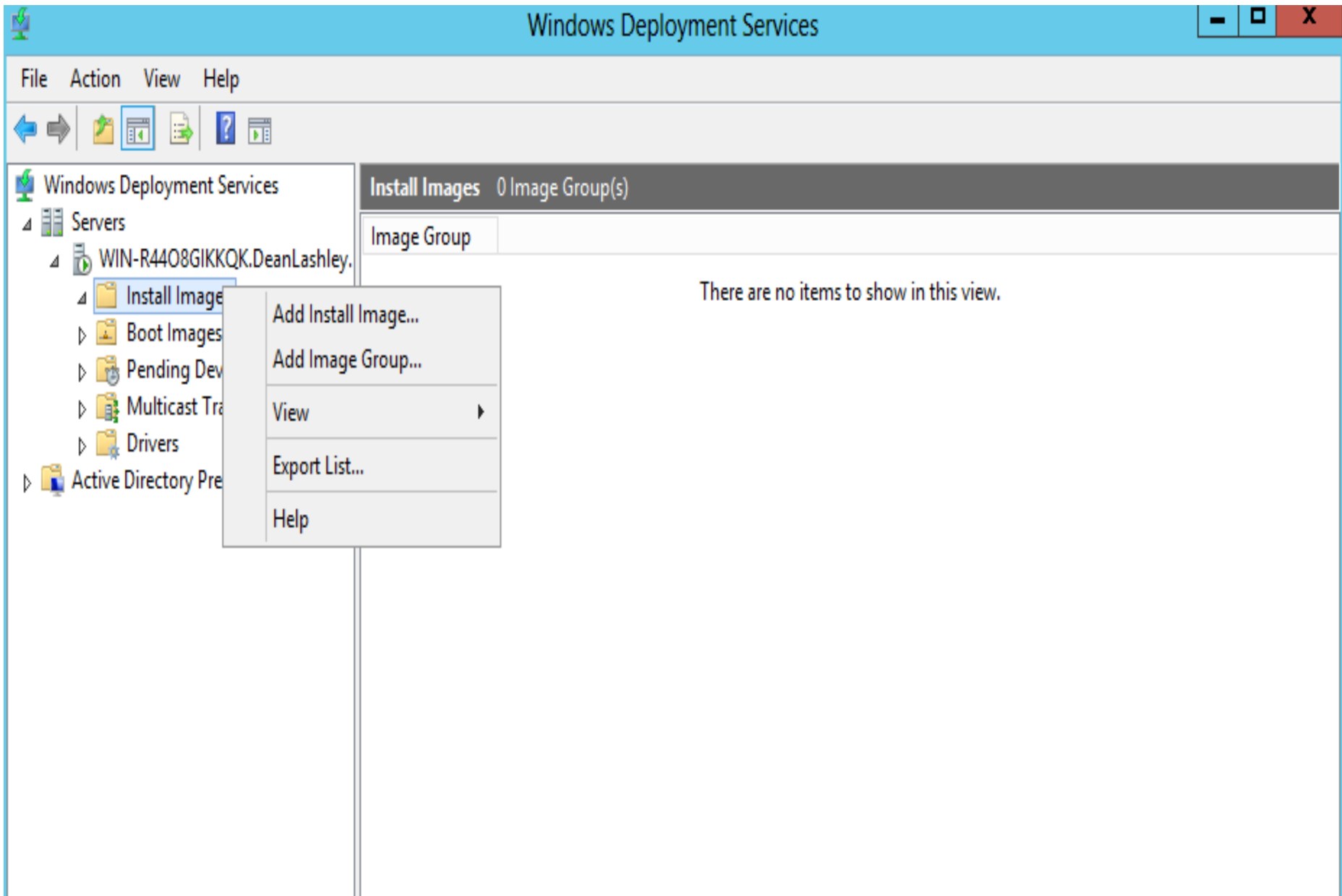


# WDS – INSTALLING IMAGE

SERVER 2012



Windows Deployment Services

File Action View Help



- Windows Deployment Services
  - Servers
    - WIN-R4408GIKKQK.DeanLashley.
      - Install Images
      - Boot Images
      - Pending Dev
      - Multicast Tra
      - Drivers
      - Active Directory Pre

- Add Install Image...
- Add Image Group...
- View
- Export List...
- Help

Install Images 0 Image Group(s)

Image Group

There are no items to show in this view.



## Add Image Wizard



### Image Group



This wizard adds an install image to your server. You must have at least one install image and one boot image on your server in order to boot a client using Pre-Boot Execution Environment (PXE) and install an operating system.

An image group is a collection of images that share common file resources and security. Enter the image group for the install image that you want to add.

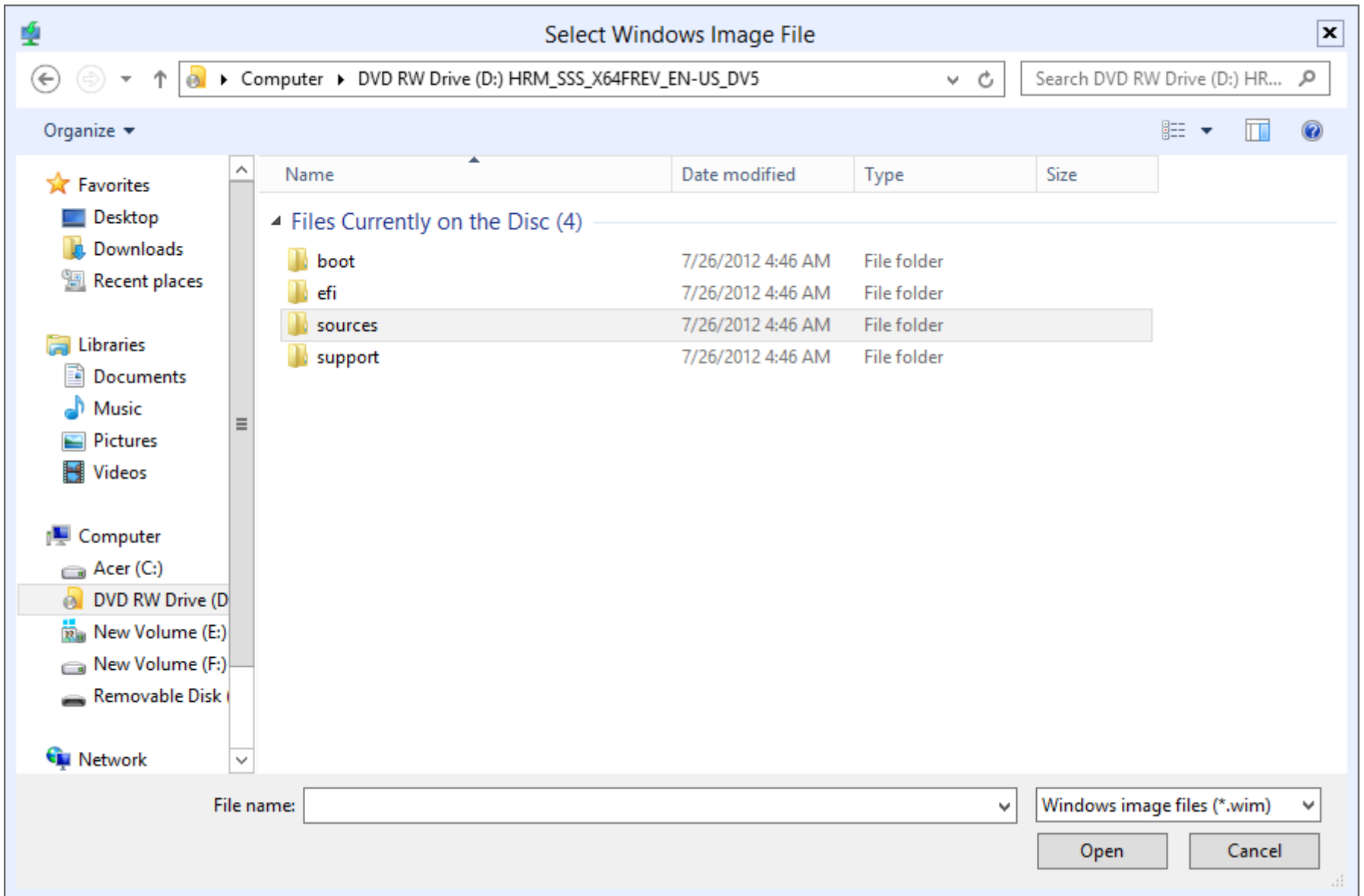
Select an existing image group

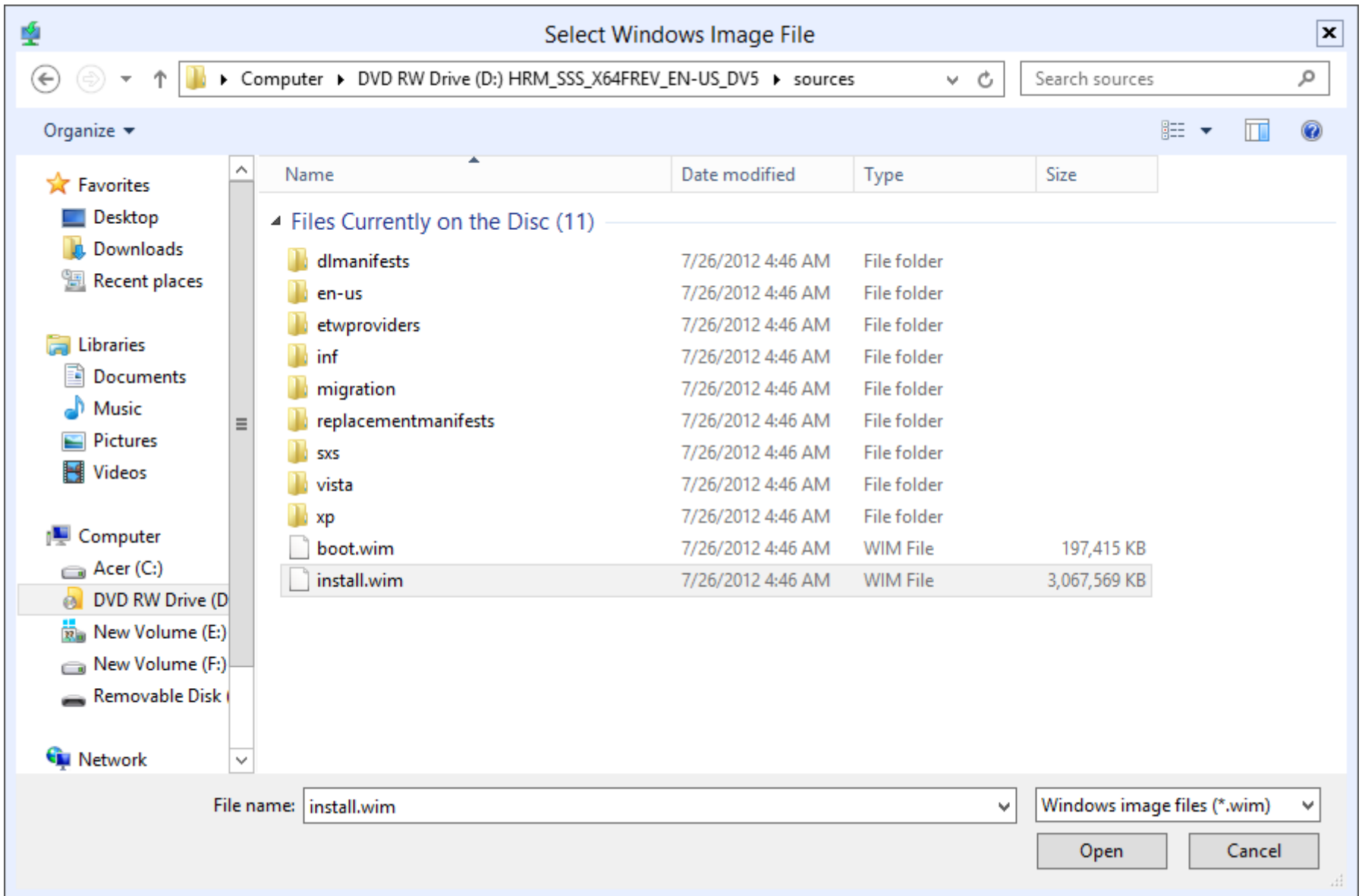
Create an image group named

< Back

Next >

Cancel







## Add Image Wizard



### Image File

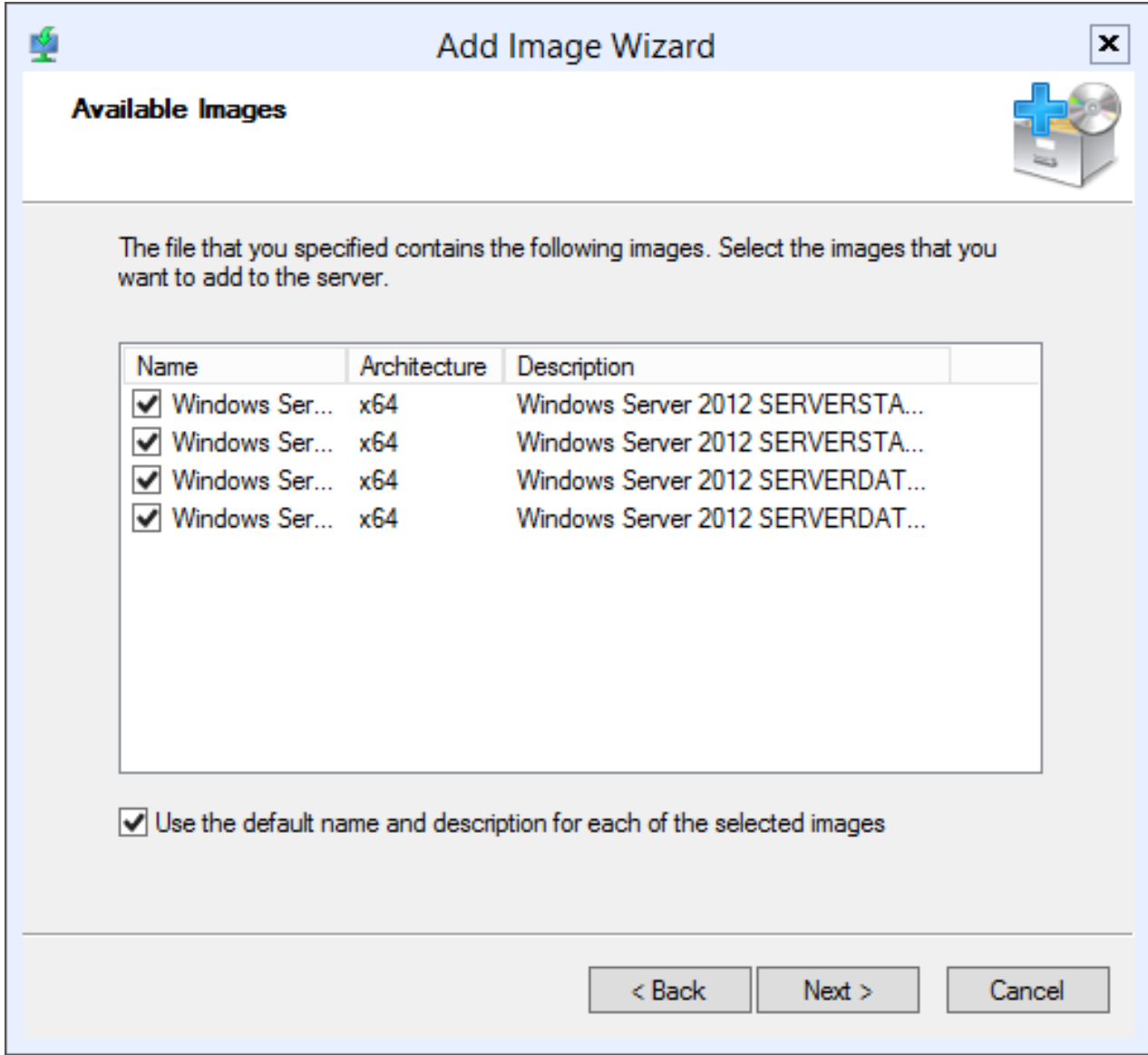


Enter the location of the Windows image file that contains the images to add.

File location:

Note: The default boot and install images (Boot.wim and Install.wim) are located on the installation DVD in the \Sources folder.

[More information about images and image types](#)





## Add Image Wizard



### Available Images



The file that you specified contains the following images. Select the images that you want to add to the server.

Name	Architecture	Description
<input type="checkbox"/> Windows Ser...	x64	Windows Server 2012 SERVERSTANDARDCOF
<input checked="" type="checkbox"/> Windows Ser...	x64	Windows Server 2012 SERVERSTANDARD
<input type="checkbox"/> Windows Ser...	x64	Windows Server 2012 SERVERDATACENTERO
<input type="checkbox"/> Windows Ser...	x64	Windows Server 2012 SERVERDATACENTER

< ||| >

Use the default name and description for each of the selected images

< Back

Next >

Cancel





## Add Image Wizard



### Summary



You have selected the following images

Image group:           ImageGroup1

Image file:             D:\sources\install.wim

Selected images:

Name
Windows Server 2012 SERVERSTANDARD

To change your selection, click Back. To add the selected images to the server, click Next.

< Back

Next >

Cancel



## Add Image Wizard

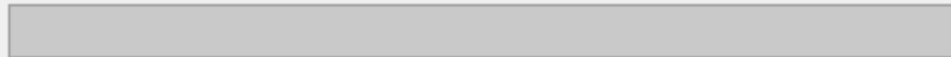


### Task Progress



Adding Windows image(s)...

Checking integrity of the source install image file...



< Back

Finish

Cancel



Add Image Wizard



Task Progress



Adding Windows image(s)...

Adding Image 1 of 1 (Windows Server 2012 SERVERSTANDARD)



< Back

Finish

Cancel



# Windows Deployment Services



File Action View Help

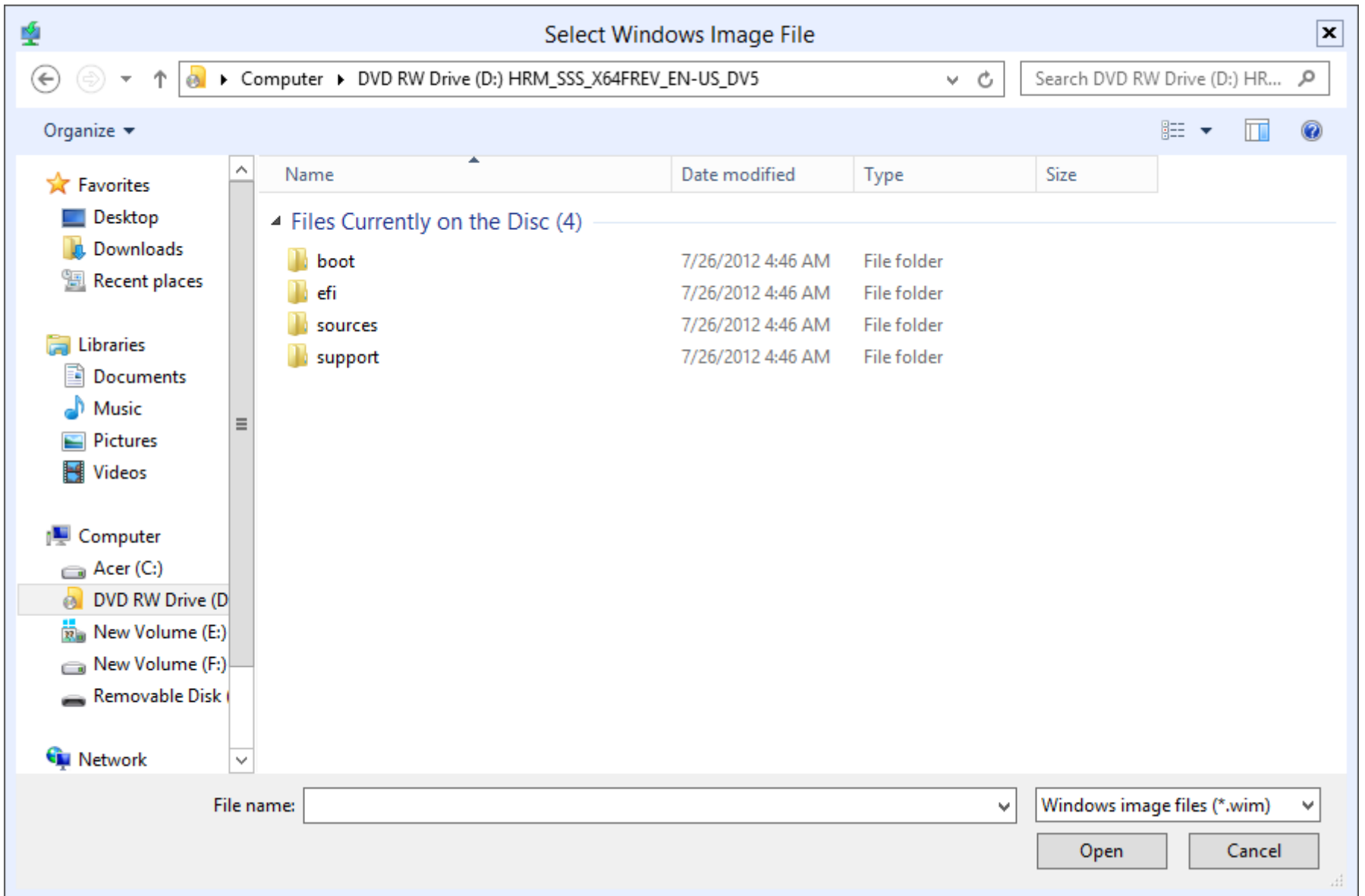


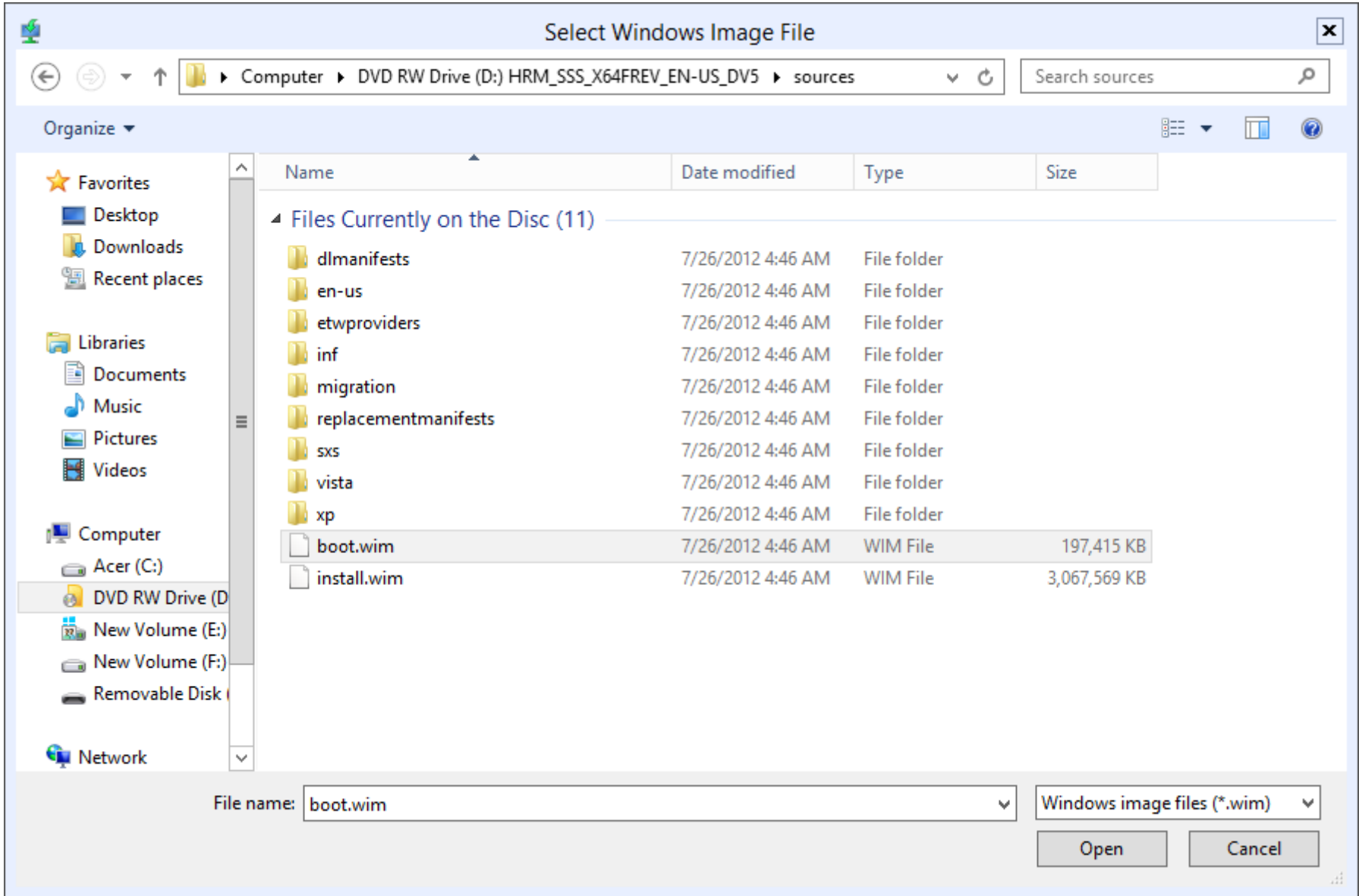
- Windows Deployment Services
  - Servers
    - WIN-R4408GIKKQK.DeanLashley.
      - Install Images
        - ImageGroup1
        - Boot Images
        - Pending Devices
        - Multicast Transmissions
        - Drivers
      - Active Directory Prestaged Devices


## ImageGroup1 1 Install Image(s)


Image Name	Architecture	Status	Expanded Size	Date	OS Version	Priority	
Windows S...	x64	Online	11443 MB	3/8/2...	6.2.9200	500000 ...	







 **Add Image Wizard** ✕

**Image File** 

Enter the location of the Windows image file that contains the images to add.

File location:

Note: The default boot and install images (Boot.wim and Install.wim) are located on the installation DVD in the \Sources folder.

[More information about images and image types](#)



## Add Image Wizard



### Image Metadata



Enter a name and description for the following image:

'Microsoft Windows Setup (x64)'



Image name:


Image description:

Image architecture:

x64



 **Add Image Wizard** 

**Summary** 

You have selected the following images

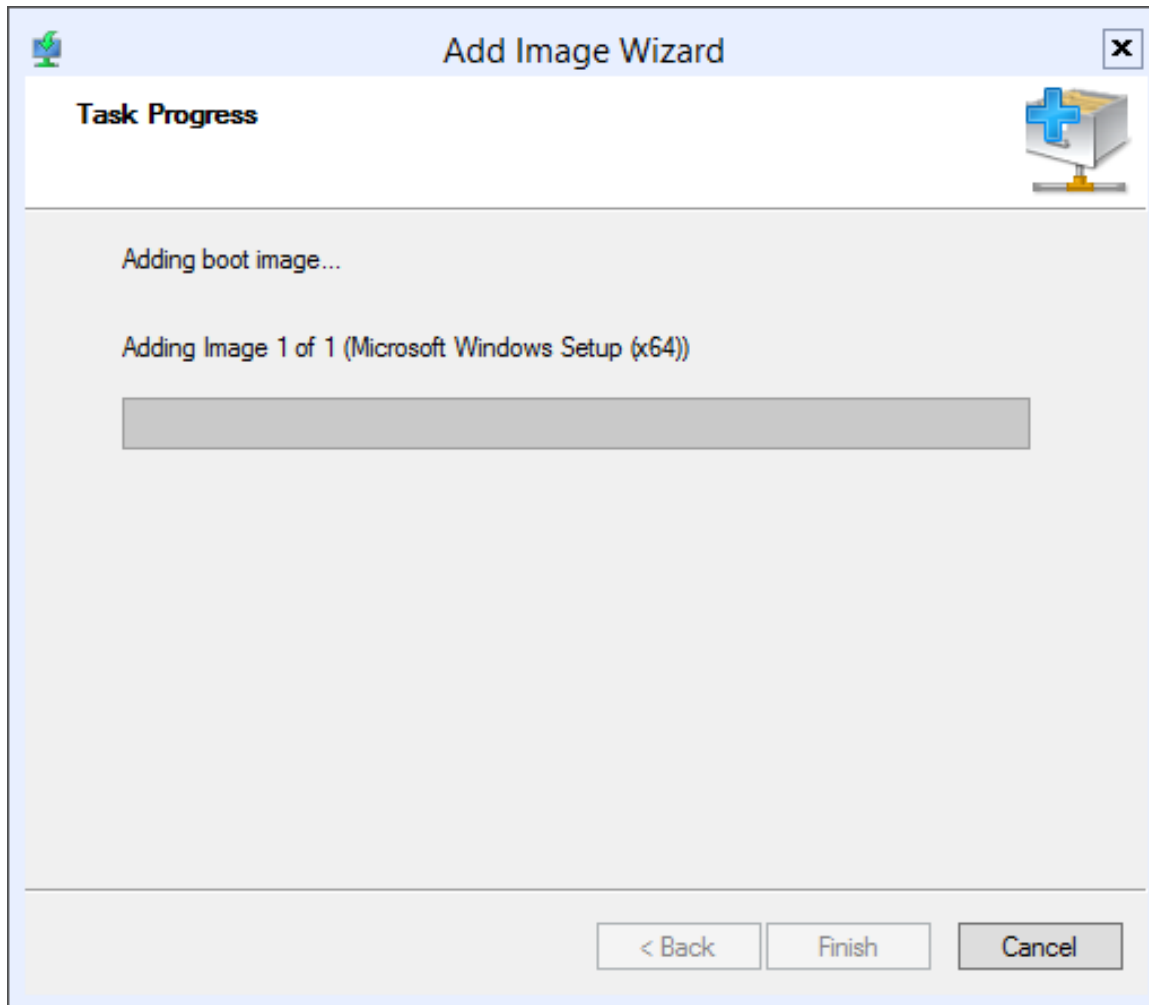
Image group:            Boot Images



Image file:             D:\sources\boot.wim


Selected images:

Name	
Microsoft Windows Setup (x64)	


To change your selection, click Back. To add the selected images to the server, click Next.



 **Add Image Wizard** 

**Task Progress** 

The operation is complete



The selected images were successfully added to the server.



# Windows Deployment Services



File Action View Help



- Windows Deployment Services
  - Servers
    - WIN-R44O8GIKKQK.DeanLashley.
      - Install Images
        - ImageGroup1
          - Boot Images**
          - Pending Devices
          - Multicast Transmissions
          - Drivers
        - Active Directory Prestaged Devices

## Boot Images 1 Boot Image(s)

Image Name	Architecture	Status	Expanded Size	Date	OS Version	Priority	
Microsoft ...	x64	Online	1197 MB	3/8/2...	6.2.9200	500000 ...	

