

Node drain

Node drain is a new feature that simplifies the process of shutting a node down for maintenance. In previous versions of Windows, if you wanted to bring a node down for maintenance, you first needed to pause the node and then move all hosted applications and services (now called roles) over to other nodes. With node drain, these two steps are combined into one.

To prepare a node to be shut down for maintenance in this way, first navigate to the Nodes container in the Failover Cluster Manager console tree. Then right-click the node you want to shut down in the details pane, point to Pause, and then select Drain Roles, as shown in Figure 10-6.

To achieve this same result by using Windows PowerShell, use the `Suspend-ClusterNode` cmdlet.

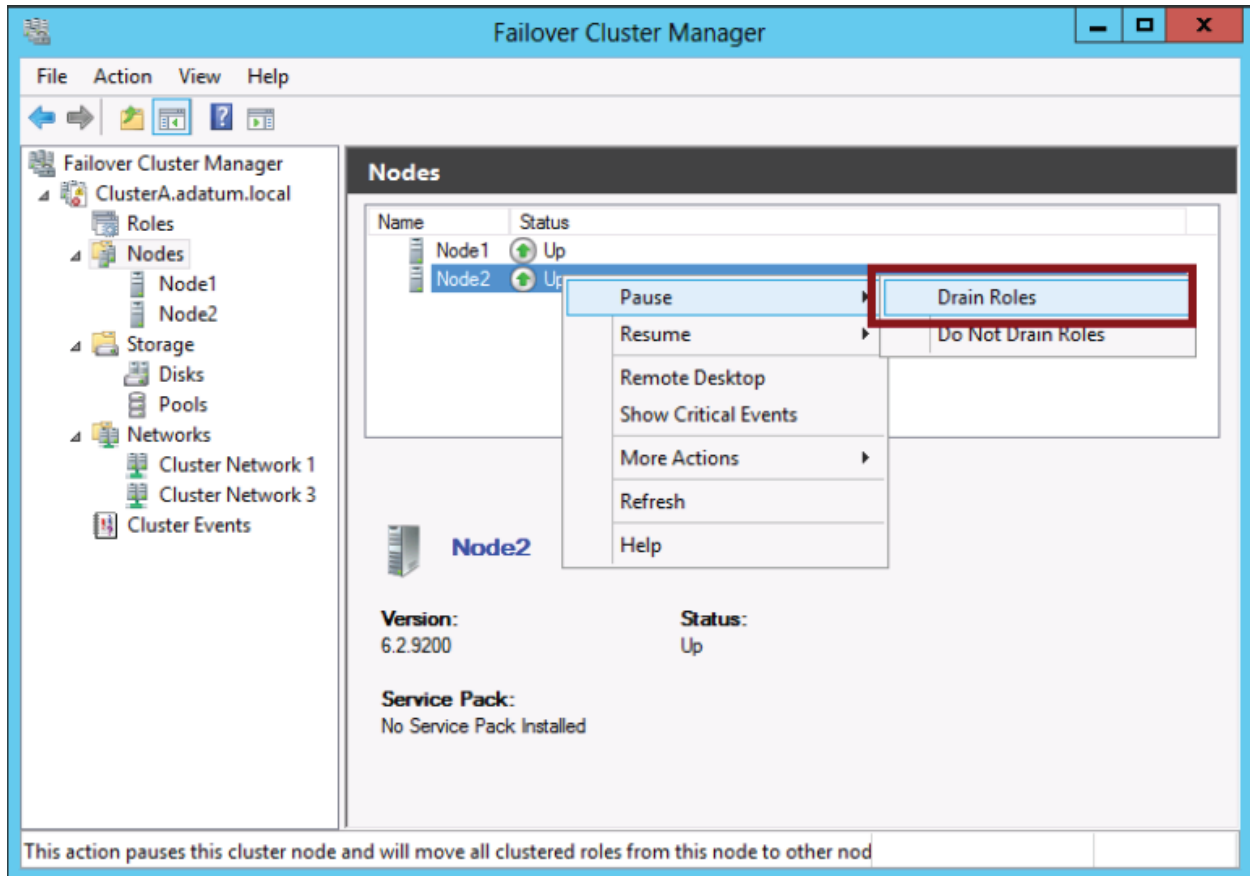


FIGURE 10-6 Draining roles from a node.