

Server Manager

Local Server

Manage Tools View Help

- Add Roles and Features
- Remove Roles and Features
- Add Servers
- Create Server Group
- Server Manager Properties

PROPERTIES
For compha

Computer name	compha	
Workgroup	WORKGROUP	
Windows Firewall	Private: On	Windows E
Remote management	Enabled	Customer E
Remote Desktop	Enabled	IE Enhance
NIC Teaming	Disabled	Time zone
Ethernet	192.168.254.32, IPv6 enabled	Product ID
Operating system version	Microsoft Windows Server 2012 Standard	Processors
Hardware information	Microsoft Corporation Virtual Machine	Installed m
		Total disk s

< ||| >



Before you begin

DESTINATION SERVER
compha

Before You Begin

Installation Type

Server Selection

Server Roles

Features

Confirmation

Results

This wizard helps you install roles, role services, or features. You determine which roles, role services, or features to install based on the computing needs of your organization, such as sharing documents, or hosting a website.

To remove roles, role services, or features:
[Start the Remove Roles and Features Wizard](#)

Before you continue, verify that the following tasks have been completed:

- The Administrator account has a strong password
- Network settings, such as static IP addresses, are configured
- The most current security updates from Windows Update are installed

If you must verify that any of the preceding prerequisites have been completed, close the wizard, complete the steps, and then run the wizard again.

To continue, click Next.

Skip this page by default

< Previous

Next >

Install

Cancel



Select installation type

DESTINATION SERVER
compha

Before You Begin

Installation Type

Server Selection

Server Roles

Features

Confirmation

Results

Select the installation type. You can install roles and features on a running physical computer or virtual machine, or on an offline virtual hard disk (VHD).

- Role-based or feature-based installation**
Configure a single server by adding roles, role services, and features.
- Remote Desktop Services installation**
Install required role services for Virtual Desktop Infrastructure (VDI) to create a virtual machine-based or session-based desktop deployment.

< Previous

Next >

Install

Cancel



Select destination server

DESTINATION SERVER
compha

Before You Begin

Installation Type

Server Selection

Server Roles

Features

Confirmation

Results

Select a server or a virtual hard disk on which to install roles and features.

- Select a server from the server pool
- Select a virtual hard disk

Server Pool

Filter: <input type="text"/>		
Name	IP Address	Operating System
compha	192.168.254.32	Microsoft Windows Server 2012 Standard

1 Computer(s) found

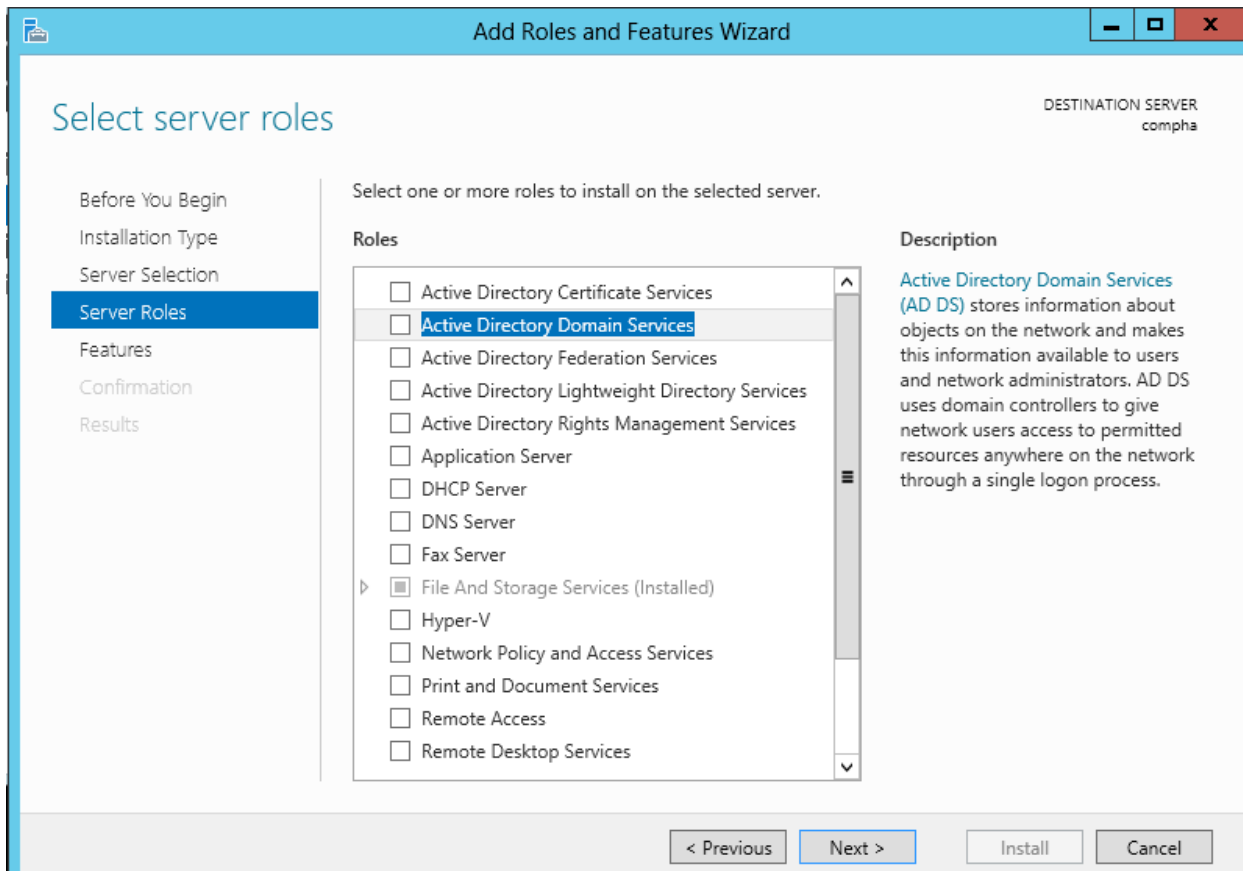
This page shows servers that are running Windows Server 2012, and that have been added by using the Add Servers command in Server Manager. Offline servers and newly-added servers from which data collection is still incomplete are not shown.

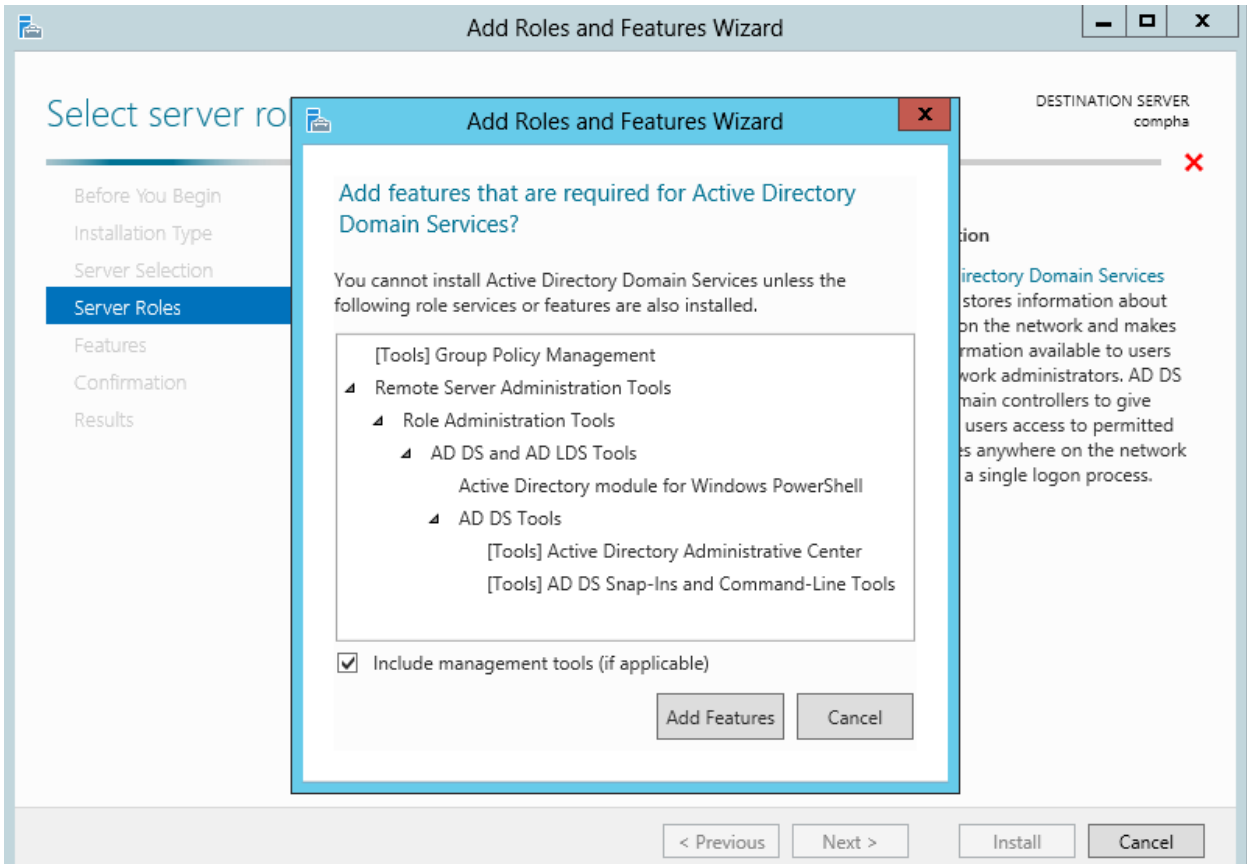
< Previous

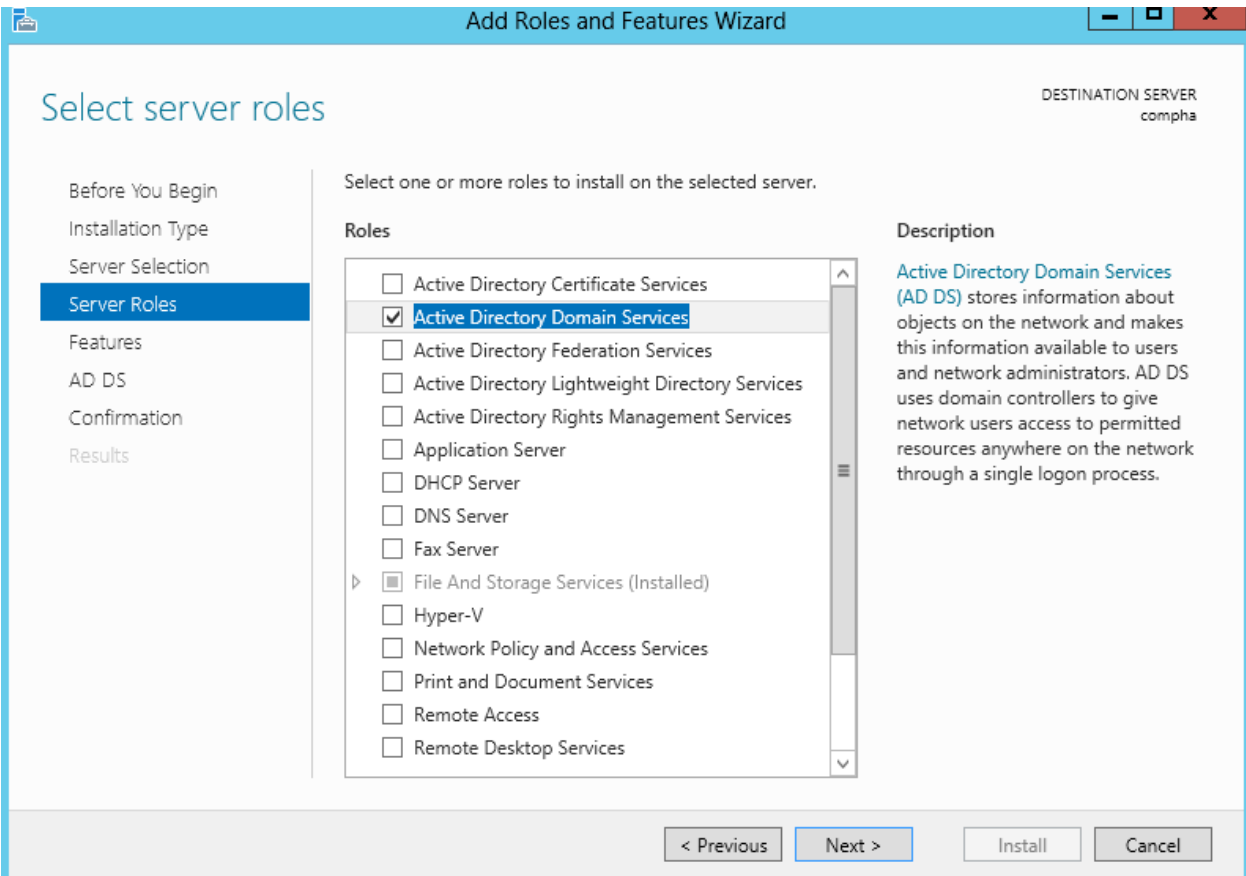
Next >

Install

Cancel







Add Roles and Features Wizard DESTINATION SERVER: compha

Select features

Before You Begin
Installation Type
Server Selection
Server Roles
Features
AD DS
Confirmation
Results

Select one or more features to install on the selected server.

Features	Description
<input type="checkbox"/> .NET Framework 3.5 Features	<p>.NET Framework 3.5 combines the power of the .NET Framework 2.0 APIs with new technologies for building applications that offer appealing user interfaces, protect your customers' personal identity information, enable seamless and secure communication, and provide the ability to model a range of business processes.</p>
<input checked="" type="checkbox"/> .NET Framework 4.5 Features (Installed)	
<input type="checkbox"/> Background Intelligent Transfer Service (BITS)	
<input type="checkbox"/> BitLocker Drive Encryption	
<input type="checkbox"/> BitLocker Network Unlock	
<input type="checkbox"/> BranchCache	
<input type="checkbox"/> Client for NFS	
<input type="checkbox"/> Data Center Bridging	
<input type="checkbox"/> Enhanced Storage	
<input type="checkbox"/> Failover Clustering	
<input checked="" type="checkbox"/> Group Policy Management	
<input type="checkbox"/> Ink and Handwriting Services	
<input type="checkbox"/> Internet Printing Client	
<input type="checkbox"/> IP Address Management (IPAM) Server	

< Previous Next > Install Cancel



Active Directory Domain Services

DESTINATION SERVER
compha

- Before You Begin
- Installation Type
- Server Selection
- Server Roles
- Features
- AD DS**
- Confirmation
- Results

Active Directory Domain Services (AD DS) stores information about users, computers, and other devices on the network. AD DS helps administrators securely manage this information and facilitates resource sharing and collaboration between users. AD DS is also required for directory-enabled applications such as Microsoft Exchange Server and for other Windows Server technologies such as Group Policy.

Things to note:

- To help ensure that users can still log on to the network in the case of a server outage, install a minimum of two domain controllers for a domain.
- AD DS requires a DNS server to be installed on the network. If you do not have a DNS server installed, you will be prompted to install the DNS Server role on this machine.
- Installing AD DS will also install the DFS Namespaces, DFS Replication, and File Replication services which are required by AD DS.

[Learn more about AD DS](#)

< Previous

Next >

Install

Cancel

Add Roles and Features Wizard - □ X

DESTINATION SERVER
compha

Confirm installation selections

- Before You Begin
- Installation Type
- Server Selection
- Server Roles
- Features
- AD DS
- Confirmation
- Results

To install the following roles, role services, or features on selected server, click Install.

Restart the destination server automatically if required

Optional features (such as administration tools) might be displayed on this page because they have been selected automatically. If you do not want to install these optional features, click Previous to clear their check boxes.

- Active Directory Domain Services
- Group Policy Management
- Remote Server Administration Tools
 - Role Administration Tools
 - AD DS and AD LDS Tools
 - Active Directory module for Windows PowerShell
 - AD DS Tools
 - Active Directory Administrative Center
 - AD DS Snap-Ins and Command-Line Tools

[Export configuration settings](#)
[Specify an alternate source path](#)

< Previous Next > Install Cancel



Installation progress

DESTINATION SERVER
compha

Before You Begin

Installation Type

Server Selection

Server Roles

Features

AD DS

Confirmation

Results

View installation progress

Starting installation



- Active Directory Domain Services
- Group Policy Management
- Remote Server Administration Tools
 - Role Administration Tools
 - AD DS and AD LDS Tools
 - Active Directory module for Windows PowerShell
 - AD DS Tools
 - Active Directory Administrative Center
 - AD DS Snap-Ins and Command-Line Tools

[Export configuration settings](#)

< Previous

Next >

Install

Cancel



Installation progress

DESTINATION SERVER
compha

Before You Begin

Installation Type

Server Selection

Server Roles

Features

AD DS

Confirmation

Results

View installation progress

Feature installation

Configuration required. Installation succeeded on compha.

- Active Directory Domain Services**
Additional steps are required to make this machine a domain controller.
[Promote this server to a domain controller](#)
- Group Policy Management**
- Remote Server Administration Tools**
 - Role Administration Tools**
 - AD DS and AD LDS Tools
 - Active Directory module for Windows PowerShell
 - AD DS Tools
 - Active Directory Administrative Center
 - AD DS Snap-Ins and Command-Line Tools

You can close this wizard without interrupting running tasks. View task progress or open this page again by clicking Notifications in the command bar, and then Task Details.

[Export configuration settings](#)

< Previous

Next >

Close

Cancel



Deployment Configuration

TARGET SERVER
compha

Deployment Configuration

Domain Controller Options

Additional Options

Paths

Review Options

Prerequisites Check

Installation

Results

Select the deployment operation

- Add a domain controller to an existing domain
- Add a new domain to an existing forest
- Add a new forest

Specify the domain information for this operation

Root domain name:

[More about deployment configurations](#)

< Previous

Next >

Install

Cancel



Domain Controller Options

TARGET SERVER
compha

- Deployment Configuration
- Domain Controller Options**
- DNS Options
- Additional Options
- Paths
- Review Options
- Prerequisites Check
- Installation
- Results

Select functional level of the new forest and root domain

Forest functional level:

Domain functional level:

Specify domain controller capabilities

- Domain Name System (DNS) server
- Global Catalog (GC)
- Read only domain controller (RODC)

Type the Directory Services Restore Mode (DSRM) password

Password:

Confirm password:

[More about domain controller options](#)

< Previous

Next >


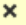
Install

Cancel



DNS Options

TARGET SERVER
compha

 A delegation for this DNS server cannot be created because the authoritative parent zone cannot be found... [Show more](#) 

- Deployment Configuration
- Domain Controller Options
- DNS Options**
- Additional Options
- Paths
- Review Options
- Prerequisites Check
- Installation
- Results

Specify DNS delegation options

Create DNS delegation

[More about DNS delegation](#)

< Previous

Next >

Install

Cancel

Active Directory Domain Services Configuration Wizard

TARGET SERVER
compha

Additional Options

- Deployment Configuration
- Domain Controller Options
- DNS Options
- Additional Options**
- Paths
- Review Options
- Prerequisites Check
- Installation
- Results

Verify the NetBIOS name assigned to the domain and change it if necessary

The NetBIOS domain name:

[More about additional options](#)

< Previous Next > Install Cancel

Active Directory Domain Services Configuration Wizard

TARGET SERVER
compha

Paths

Specify the location of the AD DS database, log files, and SYSVOL

Deployment Configuration
Domain Controller Options
 DNS Options
Additional Options
Paths
Review Options
Prerequisites Check
Installation
Results

Database folder: C:\Windows\NTDS ...

Log files folder: C:\Windows\NTDS ...

SYSVOL folder: C:\Windows\SYSVOL ...

[More about Active Directory paths](#)

< Previous Next > Install Cancel



Review Options

TARGET SERVER
compha

- Deployment Configuration
- Domain Controller Options
 - DNS Options
- Additional Options
- Paths
- Review Options**
- Prerequisites Check
- Installation
- Results

Review your selections:

Configure this server as the first Active Directory domain controller in a new forest.

The new domain name is "Virtualha.com". This is also the name of the new forest.

The NetBIOS name of the domain: VIRTUALHA

Forest Functional Level: Windows Server 2012

Domain Functional Level: Windows Server 2012

Additional Options:

Global catalog: Yes

DNS Server: Yes

Create DNS Delegation: No

These settings can be exported to a Windows PowerShell script to automate additional installations

[View script](#)

[More about installation options](#)

< Previous

Next >

Install

Cancel

Active Directory Domain Services Configuration Wizard

TARGET SERVER
compha

Prerequisites Check

✔ All prerequisite checks passed successfully. Click 'Install' to begin installation. [Show more](#) ✕

- Deployment Configuration
- Domain Controller Options
 - DNS Options
- Additional Options
- Paths
- Review Options
- Prerequisites Check**
- Installation
- Results

Prerequisites need to be validated before Active Directory Domain Services is installed on this computer

[Rerun prerequisites check](#)

▲ View results

cryptograpy algoritnms when establisishing security cchannel sessions.

For more information about this setting, see Knowledge Base article 942564 (<http://go.microsoft.com/fwlink/?LinkId=104751>).

⚠ A delegation for this DNS server cannot be created because the authoritative parent zone cannot be found or it does not run Windows DNS server. If you are integrating with an existing DNS infrastructure, you should manually create a delegation to this DNS server in the parent zone to ensure reliable name resolution from outside the domain "Virtualha.com". Otherwise, no action is required.

ℹ Prerequisites Check Completed

✔ All prerequisite checks passed successfully. Click 'Install' to begin installation.

⚠ If you click Install, the server automatically reboots at the end of the promotion operation.

[More about prerequisites](#)

< Previous Next > Install Cancel



Installation

TARGET SERVER
compha

- Deployment Configuration
- Domain Controller Options
 - DNS Options
- Additional Options
- Paths
- Review Options
- Prerequisites Check
- Installation**
- Results

Progress

Creating directory partition: CN=Configuration,DC=Virtualha,DC=com; 766 objects remaining

^ View detailed operation results

⚠ Windows Server 2012 domain controllers have a default for the security setting named "Allow cryptography algorithms compatible with Windows NT 4.0" that prevents weaker cryptography algorithms when establishing security channel sessions.

For more information about this setting, see Knowledge Base article 942564 (<http://go.microsoft.com/fwlink/?LinkId=104751>).

⚠ A delegation for this DNS server cannot be created because the authoritative parent zone cannot be found or it does not run Windows DNS server. If you are integrating with an existing DNS infrastructure, you should manually create a delegation to this DNS server in the parent zone to ensure reliable name resolution from outside the domain "Virtualha.com". Otherwise, no action is required.

[More about installation options](#)

< Previous

Next >

Install

Cancel